

Mixed Aggregation of Lithium Enolates and Lithium Halides with Lithium 2,2,6,6-Tetramethylpiperidide (LiTMP)

Patricia L. Hall, James H. Gilchrist, Aidan T. Harrison, David J. Fuller, and David B. Collum*

Contribution from the Department of Chemistry, Baker Laboratory, Cornell University, Ithaca, New York 14853-1301. Received January 10, 1991

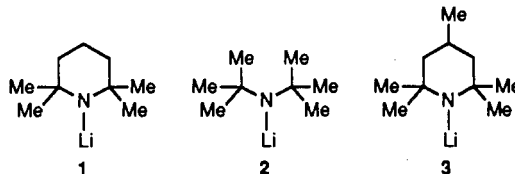
Abstract: ^6Li and ^{15}N NMR spectroscopic studies of $[\text{}^6\text{Li}]\text{-LiTMP}$ and $[\text{}^6\text{Li},^{15}\text{N}]\text{-LiTMP}$ support an earlier suggestion that LiTMP exists as a dimer-monomer mixture in THF. In the presence of $[\text{}^6\text{Li}]$ -lithium cyclohexenolate as a representative enolate, one observes mixed aggregates with 2:1, 1:1, and 2:2 LiTMP/enolate stoichiometries. Evidence of conformational isomerism is observed in the slow-exchange limit. Studies of conformationally mobile $[\text{}^6\text{Li}]$ -lithium di-*tert*-butylamide and conformationally locked $[\text{}^6\text{Li},^{15}\text{N}]\text{-lithium 2,2,4,6,6-pentamethylpiperidide}$ shed further light on the spectroscopic consequences of the chair form of the piperidine ring system. The corresponding studies of LiTMP/LiBr mixtures reveal the predominance of a 1:1 mixed aggregate, a lower propensity to form 2:1 mixed aggregates than the analogous lithium enolate case, and no tendency whatsoever to form 2:2 mixed aggregates. LiTMP/LiCl mixtures appear to contain two conformational isomers of the 2:1 stoichiometry analogous to the LiTMP enolate case as well as a 1:1 mixed aggregate in the limit of high LiCl concentration. Severe spectral overlaps and several unassigned resonances render the LiTMP-LiCl mixed aggregate structure assignments the most tentative.

Introduction

During the evolution of structural and mechanistic organolithium chemistry, an appreciation of the importance of aggregation and mixed aggregation as determinants of reactivity and selectivity has been slow to develop. Pioneering efforts to understand the details of anionic polymerizations uncovered the existence and rate effects of alkylolithium-lithium alkoxide and alkylolithium-lithium halide mixed aggregates.¹ However, the possible consequences of mixed aggregation for a large number of commonly used reaction types remained unexplored until several seminal reviews by Seebach brought the key issues into focus.² There now exists a substantial number of instances wherein mixed aggregation effects are implicated.^{2,3} Nevertheless, the number

of cases in which the structures of mixed aggregates in solution have been studied in detail is still quite limited,^{2,4,5} and the number of studies affording even approximate correlations of well-characterized mixed aggregates with changes in product selectivity or reaction rate is vanishingly small.⁶

We describe NMR spectroscopic studies of lithium tetramethylpiperidide (LiTMP, **1**). We will provide tentative structure assignments for an ensemble of LiTMP-lithium enolate and LiTMP-lithium halide mixed aggregates (Scheme I) using ^6Li and ^{15}N NMR spectroscopy as the primary structure probe.^{7,8} Studies of conformationally mobile $[\text{}^6\text{Li}]\text{-lithium di-}t\text{-butylamide}$ (**2**) and conformationally locked $[\text{}^6\text{Li},^{15}\text{N}]\text{-lithium 2,2,4,6,6-pentamethylpiperidide}$ (**3**) shed further light on the spectroscopic consequences of the chair form of the piperidine ring system. While it seems likely that enolization selectivities described in the preceding paper⁹ are a consequence of mixed aggregation



(1) Wardell, J. L. In *Comprehensive Organometallic Chemistry*; Wilkinson, G., Stone, F. G. A., Abels, F. W., Eds.; Pergamon: New York, 1982; Vol. 1, Chapter 2. Cubbon, R. C. P.; Margerison, D. *Progr. React. Kinetics* **1965**, *3*, 403. Szwarc, M. *Carbanions, Living Polymers, and Electron Transfer Processes*; Interscience: New York, 1968. Roovers, J. E. L.; Bywater, S. *Macromolecules* **1968**, *1*, 328. Bates, T. F.; Clarke, M. T.; Thomas, R. D. *J. Am. Chem. Soc.* **1988**, *110*, 5109. Thomas, R. D.; Clarke, M. T.; Jensen, R. M.; Young, T. C. *Organometallics* **1986**, *5*, 1851. Alberts, A. H.; Wynberg, H. J. *Chem. Soc., Chem. Commun.* **1990**, 453. Jackman, L. M.; Rakiewicz, E. F. *J. Am. Chem. Soc.* **1990**, *113*, 1202 and references cited therein.

(2) For especially enlightening reviews covering the structures and consequences of organolithium aggregates and mixed aggregates see: Seebach, D. In *Proceedings of the Robert A. Welch Foundation Conferences on Chemistry and Biochemistry*; Wiley: New York, 1984; p 93. Seebach, D. *Angew. Chem., Int. Ed. Engl.* **1988**, *27*, 1624. Caubere, P. In *Reviews of Heteroatom Chemistry*; MYU: Tokyo, 1984; pp 78-139.

(3) Lithium amide mixed aggregation effects: Narasaka, K.; Ukaji, Y.; Watanabe, K. *Chem. Lett.* **1986**, 1755. Narasaka, K.; Ukaji, Y.; Watanabe, K. *Bull. Chem. Soc. Jpn.* **1987**, *60*, 1457. Polt, R.; Seebach, D. *Helv. Chim. Acta* **1987**, *70*, 1930. Fraser, R. R.; Mansour, T. S. *Tetrahedron Lett.* **1986**, *27*, 331. Perez, D. G.; Nudelman, N. S. *J. Org. Chem.* **1988**, *53*, 408. Muraoka, M.; Kawasaki, H.; Koga, K. *Tetrahedron Lett.* **1988**, *29*, 337. Ando, A.; Shiomi, T. *J. Chem. Soc., Chem. Commun.* **1987**, 1620. Huisgen, R. In *Organometallic Chemistry*; American Chemical Society: Washington, DC, 1960; Monograph Series No. 147, pp 36-87. Denmark, S. E.; Ares, J. J. *J. Am. Chem. Soc.* **1988**, *110*, 4432. Meyers, A. I.; Knaus, G.; Kamata, K.; Ford, M. E. *J. Am. Chem. Soc.* **1976**, *98*, 567. Hogeveen, H.; Menge, W. M. P. B. *Tetrahedron Lett.* **1986**, *27*, 2767. Regan, A. C.; Staunton, J. J. *Chem. Soc., Chem. Commun.* **1983**, 764. Regan, A. C.; Staunton, J. J. *Chem. Soc., Chem. Commun.* **1987**, 520. Strazewski, P.; Tamm, C. *Helv. Chim. Acta* **1986**, *69*, 1041. Denmark, S. E.; Sternberg, J. A.; Lueoend, R. *J. Org. Chem.* **1988**, *53*, 1251. Liebeskind, L. S.; Welker, M. E.; Fengl, R. W. *J. Am. Chem. Soc.* **1986**, *108*, 6328. Tomioka, K.; Seo, W.; Ando, K.; Koga, K. *Tetrahedron Lett.* **1987**, *28*, 6637. Schultz, A. G.; Macielag, M.; Sundararaman, P.; Taveras, A. G.; Welch, M. J. *Am. Chem. Soc.* **1988**, *110*, 7828. Huisgen, R.; Mack, W. *Chem. Ber.* **1960**, *93*, 412. Huisgen, R. In *Organometallic Chemistry*; American Chemical Society: Washington, D.C., 1960; Monograph Series No. 147, pp 36-87. Goralski, P.; Chabanel, M. *Inorg. Chem.* **1987**, *26*, 2169. Hsieh, H. L. *J. Polym. Sci., Part A-1* **1970**, *8*, 533. Murakata, M.; Nakajima, M.; Koga, K. *J. Chem. Soc., Chem. Commun.* **1990**, 1657. Davies, S. G.; Ichihara, O. *J. Chem. Soc., Chem. Commun.* **1990**, 1554.

(4) Zarges, W.; Marsch, M.; Harnes, K.; Boche, G. *Angew. Chem., Int. Ed. Engl.* **1989**, *28*, 1392. Williard, P. G.; Hintze, M. J. *J. Am. Chem. Soc.* **1990**, *112*, 8602. See also ref 27.

(5) General reviews of organolithium structures in the solid state: Schleyer, P. v. R. *Pure Appl. Chem.* **1984**, *56*, 151. Williard, P. G. In *Comprehensive Organic Synthesis*; Pergamon: New York, 1990; in press. Boche, G. *Angew. Chem., Int. Ed. Engl.* **1989**, *28*, 277. See also ref 2.

(6) DePue, J. S.; Collum, D. B. *J. Am. Chem. Soc.* **1988**, *110*, 5524. McGarrity, J. F.; Ogle, C. A. *J. Am. Chem. Soc.* **1984**, *106*, 1805, 1810. Jackman, L. M.; Dunne, T. S. *J. Am. Chem. Soc.* **1985**, *107*, 2805. Jackman, L. M.; Rakiewicz, E. F.; Benesi, A. J. *Am. Chem. Soc.* **1991**, *113*, 4101 and references cited therein.

(7) (a) Kallman, N.; Collum, D. B. *J. Am. Chem. Soc.* **1987**, *109*, 7466. (b) Jackman, L. M.; Scarmoutzos, L. M.; Porter, W. J. *Am. Chem. Soc.* **1987**, *109*, 6524. (c) Jackman, L. M.; Scarmoutzos, L. M. *J. Am. Chem. Soc.* **1987**, *109*, 5348. (d) Jackman, L. M.; Scarmoutzos, L. M.; Smith, B. D.; Williard, P. G. *J. Am. Chem. Soc.* **1988**, *110*, 6058. (e) Galiano-Roth, A. S.; Michaelides, E. M.; Collum, D. B. *J. Am. Chem. Soc.* **1988**, *110*, 2658. (f) DePue, J. S.; Collum, D. B. *J. Am. Chem. Soc.* **1988**, *110*, 5518. (g) Galiano-Roth, A. S.; Collum, D. B. *J. Am. Chem. Soc.* **1989**, *111*, 6772.

(8) For studies of ^{15}N chemical shifts of lithium amides at ambient temperatures, see: Ide, S.; Iwasawa, K.; Yoshino, A.; Yoshida, T.; Takahashi, K. *Magn. Reson. Chem.* **1987**, *25*, 675. Konishi, K.; Yoshino, A.; Katoh, M.; Matsumoto, K.; Takahashi, K.; Iwamura, H. *Chem. Lett.* **1982**, 169. Barchiesi, E.; Bradamante, S. *J. Phys. Org. Chem.* **1990**, *3*, 139. Mansour, T. S.; Wong, T. C.; Kaiser, E. M. *J. Chem. Soc., Perkin Trans. II* **1985**, 2045. Chivers, T.; McIntyre, D. D.; Schmidt, K. J.; Vogel, H. J. *J. Chem. Soc., Chem. Commun.* **1990**, 1341.

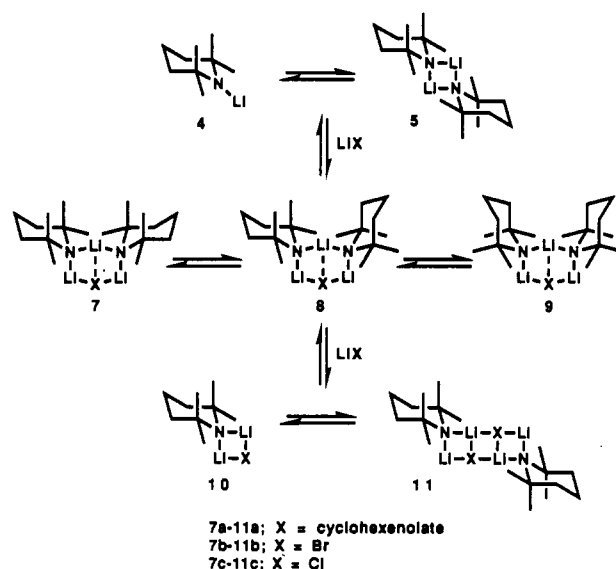
effects, we will *not* attempt to correlate structure and reactivity. Nevertheless, the results described below highlight the limitations of simplistic stereochemical models and underscore the complexity of ketone enolizations and the increasingly popular in situ TMSCI trapping protocol.¹⁰⁻¹²

Results

All spectroscopic studies described herein were carried out with recrystallized¹³ LiTMP prepared from recrystallized, doubly sublimed ethyllithium.¹⁴ The LiTMP stock solutions were freshly prepared and their titer checked before each experiment. The lithium halides were carefully purified and shown to contain <1% protic impurities. Except where noted, the lithium cyclohexenolate was prepared from LiTMP in hexane and isolated as a spectroscopically pure white solid as described elsewhere.^{14b} Many of the nuclear magnetic resonance (NMR) spectra were reproduced 3–5 times with use of a large number of independently prepared samples of LiTMP and LiX additives. Mixtures of LiTMP and LiCl are referred to as LiTMP/LiCl. Samples enriched in ⁶Li (95%) and ¹⁵N (99%) are labeled with the appropriate prefix (e.g. [⁶Li,¹⁵N]-LiTMP/LiCl). All other mixtures are named similarly.

LiTMP and LiPMP Solution Structures. Renaud and Fox observed LiTMP in THF by ⁷Li NMR spectroscopy; two distinct structural forms were tentatively assigned as dimer and monomer.¹⁵ We obtained further support for the assignments using [⁶Li,¹⁵N]-LiTMP in conjunction with ⁶Li and ¹⁵N NMR spectroscopy (Figure 1 and Tables I and II).⁷ The multiplicities¹⁶

Scheme I.



of the ⁶Li and ¹⁵N resonances are consistent with those of a mixture of monomer and cyclic aggregate.

A third species is observed that appears only at elevated temperatures as a quartet in the ⁶Li spectra (Figure 1C). We suggest the apparent LiN₃ connectivity is the result of rapid intramolecular exchange of a species bearing three ¹⁵N nuclei in total. This hypothesis is supported by analogy with alkyllithiums¹⁷ as well as the small (2.2 Hz) coupling constant. A full structure proof has been precluded so far by (1) the absence of this species at temperatures wherein intramolecular exchange would be slow and (2) an inordinate increase in the ¹⁵N T₁ values (≥120 s) at the higher temperatures. The new species does *not* appear to be a simple trimer, however, as indicated by an increase in its relative concentration upon 10-fold dilution. We suspect that it may contain LiOH or Li₂O units that normally are not observable in the low-temperature spectra. In any event, if one assumes all species undergo the rapid intramolecular site-site exchange at the elevated temperatures, then the assignment of the major aggregated form of LiTMP as a dimer rather than a trimer gains additional support.¹⁸ See Note Added in Proof.³³

To determine the extent that conformational isomerism of LiTMP could affect the NMR spectral complexity, we recorded the ¹³C NMR spectra under concentrations that greatly favor the dimer (0.2 M) over the temperature range –130 to –20 °C (Tables III and IV).¹⁹ In principle, one might see a total of four methyl resonances arising from the axial and equatorial sites in conformational isomers 5 and 12. In practice, a pair of methyl resonances (1:1) are observed below –110 °C. Since rapid chair–chair interconversions would result in time-averaged exchange of *all four* methyl groups, the data suggest that LiTMP exists as a single conformer. The three (rather than six) ¹³C resonances for the ring carbons and a single ¹⁵N resonance support the assignment of the methyls as axial and equatorial rather than deriving from two chemically distinct piperidine units. The free energy of activation for the chair–chair interconversion of LiTMP is comparable to that of 2,2,6,6-tetramethylpiperidine²⁰ (Table IV). The

(9) Hall, P. L.; Gilchrist, J. H.; Collum, D. B. *J. Am. Chem. Soc.* preceding paper in this issue.

(10) Taylor, S. L.; Lee, D. Y.; Martin, J. C. *J. Org. Chem.* **1983**, *48*, 4156. Marsai, F.; Laperdrix, B.; Güngör, T.; Mallet, M.; Queguiner, G. *J. Chem. Res., Miniprint* **1982**, 2863. Krizan, T. D.; Martin, J. C. *J. Am. Chem. Soc.* **1983**, *105*, 6155. Eaton, P. E.; Castaldi, G. *J. Am. Chem. Soc.* **1985**, *107*, 724. Eaton, P. E.; Cunkle, G. T.; Marchioro, G.; Martin, R. M. *J. Am. Chem. Soc.* **1987**, *109*, 948. Tobia, D.; Rickborn, B. *J. Org. Chem.* **1986**, *51*, 3849. Mirsadeghi, S.; Rickborn, B. *J. Org. Chem.* **1986**, *51*, 986. Comins, D. L.; LaMunyon, D. H. *Tetrahedron Lett.* **1988**, *29*, 773. Bellassoued, M.; Ennigrou, R.; Gaudemar, M. *J. Organomet. Chem.* **1988**, *338*, 149. Pratt, N. E.; Albizzati, K. F. *J. Org. Chem.* **1990**, *55*, 770. Dubois, J.-E.; Lion, C.; Dugast, J.-Y. *Tetrahedron Lett.* **1983**, *24*, 4207. Walkup, R. D.; Kane, R. R.; Obeyesekere, N. U. *Tetrahedron Lett.* **1990**, *31*, 1531. Shirai, R.; Tanaka, M.; Koga, K. *J. Am. Chem. Soc.* **1986**, *108*, 543. Block, E.; Brito, M.; Gernon, M.; McGowty, D.; Kang, H.; Zubieta, J. *Inorg. Chem.* **1990**, *29*, 3172. Wu, H. Y.; Walker, K. A. M.; Nelson, J. T. *J. Org. Chem.* **1990**, *55*, 5074. Chen, M. J.; Rathke, J. W.; Sinclair, S.; Slocum, D. W. *J. Macromol. Sci., Chem.* **1990**, *A27*, 1415. Block, E.; Gernon, M.; Kang, H.; Ofori-Okai, G.; Zubieta, J. *Inorg. Chem.* **1991**, *30*, 1736.

(11) Lipshutz, B. H.; Ellsworth, E. L.; Siahaan, T. J.; Shirazi, A. *Tetrahedron Lett.* **1988**, *29*, 6677. Sakata, H.; Aoki, Y.; Kuwajima, I. *Tetrahedron Lett.* **1990**, *31*, 1161. Sakata, H.; Kuwajima, I. *Tetrahedron Lett.* **1987**, *28*, 5719. Alexakis, A.; Sedrani, R.; Mangeney, P. *Tetrahedron Lett.* **1990**, *31*, 345. Lipshutz, B. H.; Elworthy, T. R. *Tetrahedron Lett.* **1990**, *31*, 477. Horiguchi, Y.; Komatsu, M.; Kuwajima, I. *Tetrahedron Lett.* **1989**, *30*, 7087. Asaoka, M.; Fujii, N.; Shima, K.; Hisashi, T. *Chem. Lett.* **1988**, 805. Horiguchi, Y.; Matsuzawa, S.; Nakamura, E.; Kuwajima, I. *Tetrahedron Lett.* **1986**, *27*, 4025. Corey, E. J.; Boaz, N. W. *Tetrahedron Lett.* **1985**, *26*, 6019. Nakamura, E.; Matsuzawa, S.; Horiguchi, Y.; Kuwajima, I. *Tetrahedron Lett.* **1986**, *27*, 4029. Matsuzawa, S.; Horiguchi, Y.; Nakamura, E.; Kuwajima, I. *Tetrahedron Lett.* **1986**, *27*, 4553. Bergdahl, M.; Lindstedt, E. L.; Nilsson, M.; Olsson, T. *Tetrahedron* **1988**, *44*, 2055. Bergdahl, M.; Lindstedt, E.-L.; Nilsson, M.; Olsson, T. *Tetrahedron* **1989**, *45*, 535. Linderman, R. J.; McKenzie, J. R. *J. Organomet. Chem.* **1989**, *361*, 31. Enda, J.; Kuwajima, I. *J. Am. Chem. Soc.* **1985**, *107*, 5495. Alexakis, A.; Berlan, J.; Besace, Y. *Tetrahedron Lett.* **1986**, *27*, 1047. Johnson, C. R.; Marren, T. J. *Tetrahedron Lett.* **1985**, *26*, 6015. Corey, E. J.; Boaz, N. W. *Tetrahedron* **1989**, *45*, 545. Smith, A. B., III; Dunlap, N. K.; Sulikowski, G. A. *Tetrahedron Lett.* **1988**, *29*, 439. Yoshifuji, M.; Nakamura, T.; Inamoto, N. *Tetrahedron Lett.* **1987**, *28*, 6325. Potin, D.; Dumas, F. *Synth. Commun.* **1990**, *20*, 2805. Amberg, W.; Seebach, D. *Chem. Ber.* **1990**, *123*, 2439.

(12) Tamara, Y.; Nakamura, M.; Sakaguchi, M.; Ochiai, H.; Yoshida, Z. *J. Chem. Soc., Chem. Commun.* **1988**, 610. McDougal, P. G.; Condon, B. D.; Laffosse, M. D., Jr.; Lauro, A. M.; Van Derveer, D. *Tetrahedron Lett.* **1988**, *29*, 2547. Giannis, A.; Sandhoff, K. *Angew. Chem., Int. Ed. Engl.* **1989**, *28*, 218.

(13) Lappert, M. F.; Slade, M. J.; Singh, A.; Atwood, J. L.; Rogers, R. D.; Shafir, R. *J. Am. Chem. Soc.* **1983**, *105*, 302.

(14) (a) Lewis, H. L.; Brown, T. L. *J. Am. Chem. Soc.* **1970**, *92*, 4664. A more detailed procedure is described in ref 14b. (b) Kim, Y. J.; Bernstein, M. P.; Galiano Roth, A. S.; Romesberg, F. E.; Williard, P. G.; Fuller, D. J.; Harrison, A. T.; Collum, D. B. *J. Org. Chem.* **1991**, *56*, 4435.

(15) Renaud, P.; Fox, M. A. *J. Am. Chem. Soc.* **1988**, *110*, 5702.

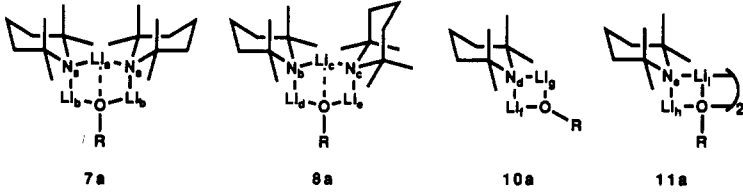
(16) The spins of ⁶Li and ¹⁵N are 1 and 1/2, respectively; *NMR of Newly Accessible Nuclei*; Laszlo, P., Ed.; Academic Press: New York, 1983.

(17) Bywater, S.; Lachance, P.; Worsfold, D. J. *J. Phys. Chem.* **1975**, *79*, 2148. Fraenkel, G.; Henrichs, M.; Hewitt, J. M.; Su, B. M.; Geckle, M. J. *J. Am. Chem. Soc.* **1980**, *102*, 3345. Thomas, R. D.; Clarke, M. T.; Jensen, R. M.; Young, T. C. *Organometallics* **1986**, *5*, 1851.

(18) The mixed THF–HMPA solvate analogous to dimer 5 has been thoroughly characterized: Romesberg, F. E.; Gilchrist, J. H.; Harrison, A. T.; Fuller, D. J.; Collum, D. B. *J. Am. Chem. Soc.* **1991**, *113*, 5751.

(19) Although there exist a number of allusions to ¹³C NMR spectroscopic studies of LiTMP in the literature, we have been unsuccessful at locating details such as chemical shifts.

(20) Conformational studies of 2,2,6,6-tetramethylpiperidine: Lunazzi, L.; Macciantelli, D. *J. Chem. Soc., Perkin Trans. II* **1981**, 604.

Table I. ^6Li NMR Spectroscopic Data of $[\text{}^6\text{Li},^{15}\text{N}]\text{-LiTMP}$ and $[\text{}^6\text{Li},^{15}\text{N}]\text{-LiTMP/Lithium Cyclohexenolate}$ Mixtures


resonance	equiv of ^6Li enolate	temp, $^{\circ}\text{C}$	δ , ppm	mult (J , Hz) ^a	T_1 , s	connectivity	assign ^b
LiTMP dimer	0.0	-115	1.48	t (4.9)	1.3		5
LiTMP monomer	0.0	-115	0.50	d (8.5)	2.4		4
Li_a	0.67	-120	2.01	t (5.2)	1.3	$\text{N}_a\text{-Li}_a\text{-N}_a$	7a
Li_b	0.67	-120	0.60	d (5.5)	2.2	$\text{N}_a\text{-Li}_b$	7a
Li_c	0.67	-120	1.51	t (5.2)	1.6	$\text{N}_b\text{-Li}_c\text{-N}_c$	8a
Li_d	0.67	-120	0.29	d (5.7)	2.5	$\text{N}_b\text{-Li}_d$	8a
Li_e	0.67	-120	0.11	d (-) ^c	<i>c</i>	$\text{N}_c\text{-Li}_e$	8a
Li_f	0.67	-120	1.07	d (5.7)	2.1	$\text{N}_d\text{-Li}_f$	10a
Li_g	0.67	-120	0.11	d (4.4)	3.5	$\text{N}_d\text{-Li}_g$	10a
Li_h	1.5	-120	0.49	d (5.0)	3.4	$\text{N}_e\text{-Li}_h$	11a
Li_i	1.5	-120	0.05	d (4.8)	6.6	$\text{N}_e\text{-Li}_i$	11a
Li cyclohexenolate	1.5	-120	-0.08	s	18		15

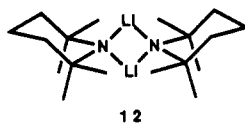
^as = singlet, d = doublet, t = triplet, q = quartet. The coupling constants were measured after resolution enhancement. ^bAssignment of structure **7a** rather than **9a** and the assignments of axial and equatorial lithium resonances are purely arbitrary as detailed in the text. ^cOverlap with Li_g resonance precluded a precise measurement of $J_{\text{Li-N}}$ and T_1 .

Table II. ^{15}N NMR Spectroscopic Data of $[\text{}^6\text{Li},^{15}\text{N}]\text{-LiTMP}$ and $[\text{}^6\text{Li},^{15}\text{N}]\text{-LiTMP/Lithium Cyclohexenolate}$ Mixtures

resonance	equiv of ^6Li enolate	temp, $^{\circ}\text{C}$	δ , ppm	mult (J , Hz) ^a	connectivity	assign ^b
$[\text{}^{15}\text{N}]\text{-TMP}$		-115	75.6			
N of dimer	0.0	-115	79.7	quint (4.8)		5
N of monomer	0.0	-115	93.5	t (8.5)		4
N_a	0.67	-120	82.2	quint (5.7)	$\text{Li}_a\text{-N}_a\text{-Li}_b$	7a
N_b	0.67	-120	83.8	quint (5.0) ^c	$\text{Li}_c\text{-N}_b\text{-Li}_d$	8a
N_c	0.67	-120	86.1	tt (4.8, 5.4)	$\text{Li}_e\text{-N}_c\text{-Li}_e$	8a
N_d	0.67	-120	82.0	tt (4.3, 5.7)	$\text{Li}_f\text{-N}_d\text{-Li}_g$	10a
N_e	1.5	-120	83.7	quint (5.0) ^c	$\text{Li}_h\text{-N}_e\text{-Li}_i$	11a

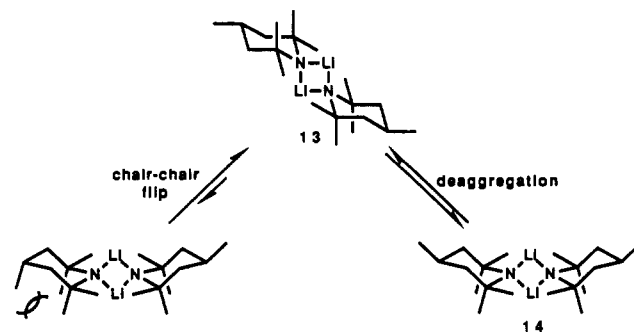
^at = triplet, tt = triplet of triplets, quint = quintet. ^bAssignment of structure **7a** rather than **9a** and the assignments of inequivalent ^{15}N resonances in **8a** are purely arbitrary as detailed in the text. ^cResonances appear to be triplet of triplets, but coupling constants are obscured by N_b and N_e overlap.

existence of a single ^6Li dimer resonance further argues in favor of C_{2h} conformational isomer **5** rather than the C_{2v} isomer **12**. Although it cannot be rigorously established that the slow exchange limit has been attained given the absence of definitive ^6Li , ^{13}C , and ^{15}N chemical shifts for *both* conformers, evidence cited below on a conformationally locked analogue renders the C_{2v} dimer **12** very unlikely.



We further addressed the problem of rapid conformational exchange using lithium 2,2,4,6,6-pentamethylpiperidide (LiPMP, **3**). A relatively facile chair-chair conformational flip in LiTMP interconverts stereoisomers **5** and **12** and causes Li-Li and Me-Me site exchange. In contrast, the additional 4-methyl substituent of LiPMP precludes such a pathway, mandating the exchanges of isomers **13** and **14** (analogous to **5** and **12**) proceed via a less efficient mechanism involving N-Li bond rupture. At the same time, the remote substituent should have very little influence on the stereoisomer or monomer-dimer distributions. In the event, $[\text{}^6\text{Li}]\text{-LiPMP}$ and $[\text{}^6\text{Li},^{15}\text{N}]\text{-LiPMP}$ were prepared as described in the Experimental Section and analyzed spectroscopically. In the low temperature limit ($-115\text{ }^{\circ}\text{C}$), the ^6Li NMR spectrum of $[\text{}^6\text{Li}]\text{-LiPMP}$ shows a dimer-monomer ratio that is indistinguishable from that of $[\text{}^6\text{Li}]\text{-LiTMP}$ with chemical shifts (δ 1.50 and 0.48 ppm) that differ only slightly. The single dimer resonance is consistent with conformational isomer **13** and inconsistent with isomer **14** (Table III). Moreover, the ^6Li and ^{15}N NMR spectra of $[\text{}^6\text{Li},^{15}\text{N}]\text{-LiPMP}$ display a doublet of doublets (δ 1.50 ppm,

$J_{\text{Li-N}} = 4.5$ and 5.1 Hz) and triplet of triplets (δ 76.1, $J_{\text{Li-N}} = 4.7$ and 5.2 Hz), respectively, as a result of differential axial and equatorial Li-N coupling (Figure 2A) in the dimer. Conformers **13** and **14** would both be expected to show a triplet-of-triplets in the ^{15}N NMR spectrum by virtue of slightly different coupling to axial and equatorial ^6Li nuclei. However, it is doubtful that the single ^6Li dimer resonance of $[\text{}^6\text{Li}]\text{-LiPMP}$ could correspond to two overlapping ^6Li resonances of C_{2v} isomer **14** given that axial and equatorial lithium nuclei of LiTMP-LiX mixed aggregates resonate at dramatically different chemical shifts (see below). Even so, the ^6Li dimer resonance of $[\text{}^6\text{Li},^{15}\text{N}]\text{-14}$ deriving from two superimposed triplets could not give rise to the observed doublet-of-doublets (Figure 2B). Thus, the results from LiPMP exclude C_{2v} dimer **14**. They do not, however, exclude higher aggregates of C_{nh} symmetry.³³



Solution Structures of LiTMP/Lithium Enolate Mixed Aggregates. We suspected the intervention of LiTMP-lithium enolate

Table III. ^{13}C NMR Spectroscopic Data of LiTMP and LiTMP/LiX Mixed Aggregates in THF/Hexane

compd	carbon	temp, °C	δ , ppm
LiTMP dimer (5)	C ₁	-20	53.1
	C ₂	-20	43.1
	C ₃	-20	20.9
	C _{4/5}	-20	36.3
	C ₁	-125	52.3
	C ₂	-125	42.6
	C ₃	-125	20.2
	C ₄	-125	32.2
	C ₅	-125	38.3
LiTMP·LiBr (10b)	C ₁	-20	52.3
	C ₂	-20	43.0
	C ₃	-20	20.8
	C _{4/5}	-20	35.2
	C ₁	-120	52.2
	C ₂	-120	42.7
	C ₃	-120	20.8
	C ₄	-120	32.6
	C ₅	-120	37.7
LiTMP·LiCl (10c)	C ₁	-20	52.3
	C ₂	-20	43.1
	C ₃	-20	21.0
	C _{4/5}	-20	35.1
	C ₁	-108	52.2
	C ₂	-108	42.8
	C ₃	-108	21.0
	C ₄	-108	32.5
	C ₅	-108	37.8
LiPMP dimer (13)	C ₁	-20	54.2
	C ₂	-20	52.7
	C ₃	-20	26.0
	C ₄	-20	33.8
	C ₅	-20	39.1
	C ₆	-20	24.7
	C ₁	-108	54.1
	C ₂	-108	52.5
	C ₃	-108	25.9
	C ₄	-108	33.6
	C ₅	-108	38.9
	C ₆	-108	24.8

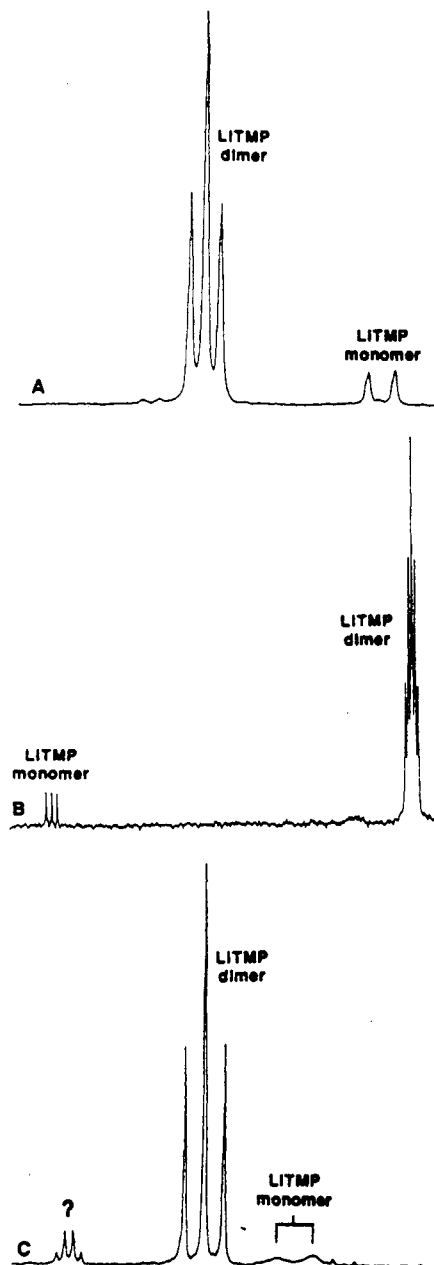
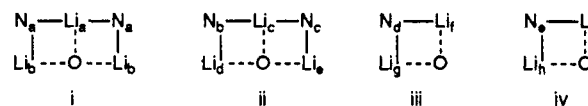
Table IV. Activation Energies for the Site-Site Interconversion of LiTMP and LiTMP/LiX Mixtures^a

sample (1:1.5)	freq	site exchange ^b	ΔG_{act} , kcal/mol	T_c , °C
TMP	100.56	Me _{ax} -Me _{eq}	8.0 ²⁴	-100 ²⁴
LiTMP	100.56	Me _{ax} -Me _{eq}	7.0	-110
LiTMP/LiBr	100.56	Me _{ax} -Me _{eq}	9.0	-67
LiTMP/LiBr	50.30	Me _{ax} -Me _{eq}	9.0	-73
LiTMP/LiBr	58.84	Li-Li _g	9.1	-83
LiTMP/LiBr		Li-Li _g	9.1 (calcd ^d)	-83
LiTMP/LiCl	100.56	Me _{ax} -Me _{eq}	9.0	-65
LiTMP/LiCl	50.30	Me _{ax} -Me _{eq}	9.1	-71
LiTMP/LiCl	58.84	Li-Li _g	9.2	-82
LiTMP/LiCl		Li-Li _g	9.3 (calcd ^d)	-82

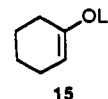
^aSamples were recorded as 0.2 M solutions in 3:1 THF-*d*₈/*n*-pentane. ^bSee Tables V and VII for assignments of Li resonances. The carbon multiplicities were determined by gated decoupling, while the attribution as axial and equatorial was not rigorously determined. ^c T_c corresponds to the coalescence temperature (estimated error: ± 2 °C).

^dThe calculated value of ΔG_{act} for Li-Li site exchange derives from measurements of the Me_{ax}-Me_{eq} site exchange on a 400 MHz spectrometer (100.56-MHz operating frequency) and a 200-MHz spectrometer (50.30-MHz operating frequency).

mixed aggregates as the source of the conversion-dependent 3-pentanone enolization selectivities.⁹ Structural studies using the enolate(s) of 3-pentanone were precluded by the added complexities accompanying the *E/Z* mixtures. Accordingly, we turned to cyclohexanone enolate **15** as a model for *E* enolates. The results of ^6Li NMR spectroscopic studies on ^6Li -LiTMP/**15** and

**Figure 1.** NMR spectra of 0.10 M $^6\text{Li}, ^{15}\text{N}$ -LiTMP in 3:1 THF/pentane: (A) ^6Li NMR spectrum at -115 °C; (B) ^{15}N NMR spectrum at -115 °C; (C) ^6Li NMR spectrum at -35 °C.**Chart I**


$^6\text{Li}, ^{15}\text{N}$ -LiTMP/**15** mixtures are illustrated in Figure 3 and listed in Table I. A solitary singlet at -0.08 ppm observed in the ^6Li spectrum of enolate **15** in the absence of LiTMP is consistent with



a number of aggregation state topologies, including that of a cubic tetramer inferred from NMR spectroscopic, colligative, and crystallographic studies.²¹ By systematically changing the

(21) For a review of the solution structure and mechanistic studies of enolates and phenolates see: Jackman, L. M.; Bortiatynski In *Comprehensive Carbanion Chemistry*; in press.

Table V. ^6Li NMR Spectroscopic Data of $[\text{}^6\text{Li},^{15}\text{N}]$ -LiTMP/LiBr Mixtures

							
resonance	equiv of $^6\text{LiBr}$	temp, $^{\circ}\text{C}$	δ , ppm	mult (J , Hz) ^a	T_1 , s	connectivity	assign ^b
Li_i	0.5	-120	1.29	t (5.4)	1.3	$\text{N}_i\text{-Li}_i\text{-N}_i$	7b
Li_k	0.5	-120	0.57 ^c	d (5.1) ^c	c	$\text{N}_i\text{-Li}_k$	7b
Li_l	1.5	-120	1.51	d (5.6)	2.4	$\text{N}_e\text{-Li}_l$	10b
Li_m	1.5	-120	0.56	d (5.1)	3.7	$\text{N}_e\text{-Li}_m$	10b
LiBr	1.5	-120	0.46	s	40		

^as = singlet, d = doublet, t = triplet. The coupling constants were measured after resolution enhancement. ^bAssignment of structure **7b** rather than **9b** and the assignments of axial and equatorial lithium resonances are purely arbitrary as detailed in the text. ^c Li_k is hidden under Li_m and appears by decoupling. The overlap precluded a precise measurement of $J_{\text{Li-N}}$ and T_1 .

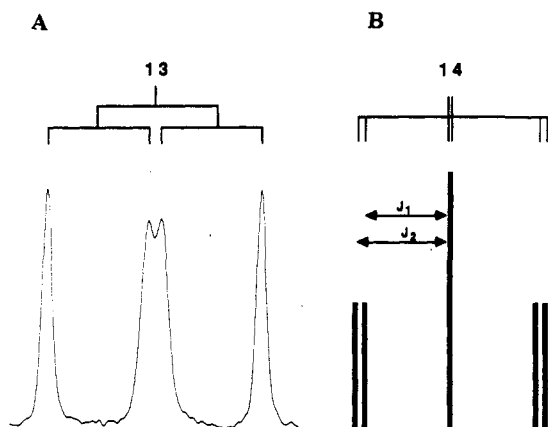


Figure 2. (A) ^6Li NMR spectrum of 0.10 M $[\text{}^6\text{Li},^{15}\text{N}]$ -LiPMP in 3:1 THF/pentane at $-115\text{ }^{\circ}\text{C}$ showing resonance of dimer **13**; (B) rendition of a spectrum of $[\text{}^6\text{Li},^{15}\text{N}]$ -LiPMP assuming conformer **14** with coincidental ^6Li chemical shifts of the inequivalent ^6Li nuclei.

LiTMP/**15** proportions as well as the absolute concentrations, nine mixed aggregate resonances can be observed and classified into three groups: those favored at high LiTMP/**15** ratio (labeled $\text{Li}_a\text{-Li}_c$), those favored at low LiTMP/**15** ratio (labeled Li_f and Li_g), and those favored at low LiTMP/**15** ratio and high absolute concentration (labeled Li_h and Li_i). The changes in the ^6Li NMR spectra occur with concomitant changes in the ^{15}N NMR spectra (Figure 4 and Table II). Single-frequency decoupling experiments²² (Supplementary Material) afforded $^6\text{Li}\text{-}^{15}\text{N}$ resonance correlations (cf. Tables I and II) and, in turn, the partial structures i-iv illustrated in Chart I.

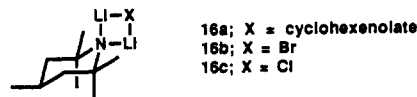
The concentration independence of the intensities within each of these three groups implicates either three structurally complex mixed aggregates or three groups of isomers. Evidence that the spectral complexity arises from conformational isomerism was accrued from several independent sources.

(1) The soft equilibrium even in the limit of a high enolate/LiTMP ratio prevents a detailed analysis of the conformational properties of **10a**. However, measurements of coalescence temperatures of the isostructural 1:1 LiTMP/LiX mixed aggregates **10b** and **10c** (see below) show that the $\text{Me}_{\text{ax}}\text{-Me}_{\text{eq}}$ and the $\text{Li}_{\text{ax}}\text{-Li}_{\text{eq}}$ site exchanges have the same activation energies within experimental error (Table IV), while the barrier to exchange between the 1:1 LiTMP/LiX mixed aggregates with free halides is substantially higher.²³

(2) cursory examination of $t\text{-Bu}_2\text{NLi}/\textbf{15}$ by ^6Li NMR spectroscopy reveals a 1:1 mixed aggregate displaying only a single

lithium resonance (δ 0.68 ppm), contrasting with the two (axial and equatorial) lithium resonances observed in the conformationally constrained 1:1 LiTMP/**15** mixed aggregate. The spectral simplification in this instance suggests the cyclic piperidyl ring as the source of the unexpected complexity in the spectra of LiTMP/**15** mixtures. Interestingly, as a result of the increased steric demands of the $(t\text{-Bu})_2\text{N}$ fragment, the 2:1 $t\text{-Bu}_2\text{NLi}/\textbf{15}$ mixed aggregates do not build up to appreciable concentrations.

(3) ^6Li NMR spectra of mixtures of $[\text{}^6\text{Li}]\text{-LiPMP}$ and enolate **15** are nearly indistinguishable from the analogous LiTMP/**15** mixtures. More specifically, the ^6Li spectrum of a 1:2 mixture of conformationally locked $[\text{}^6\text{Li}]\text{-LiPMP}$ and enolate **15** shows two resonances (δ 1.02 and 0.15 ppm) consistent with **16a** in analogy with mixed aggregate **10a**. However, the two resonances of **16a** coalesce at substantially higher temperatures. Thus, preclusion of Li-Li site exchange by a chair-chair flip correlates well with reduced exchange rates. More detailed studies of LiPMP/LiX mixtures in progress should be especially revealing.



On the basis of the concentration dependencies, multiplicities, and resonance correlations we derived the overall structure assignments summarized in Scheme I. The unsymmetric 2:1 mixed aggregate **8a** and 1:1 mixed aggregate **10a** (corresponding to connectivity fragments ii and iii) are relatively unambiguous assignments. The assignment of 2:2 mixed aggregate **11a** is based on the similarity of its spectral properties to **10a** taken in conjunction with the concentration dependence of the equilibrium. Similar four-rung ladder structures have been observed crystallographically.²⁴ Reducing the THF concentration increases the concentration of the 2:1 and 2:2 mixed aggregates at the expense of **10a** consistent with the laddering principle put forth by Snaith and co-workers.²⁵ This seems to suggest that the 2:1 and 2:2 mixed aggregates are at a lower per-lithium solvation state.

We hasten to add, however, that the symmetric mixed trimer corresponding to partial structure i could be either **7a** or **9a**. Similarly, we do not know which resonance of the axial/equatorial pairs Li_i/Li_c of **8a**, Li_f/Li_g of **10a**, and Li_h/Li_i of **11a** corresponds to the axial and which to the equatorial. The most important unresolved issue is whether the 2:1 mixed trimers are ladders (with the central dotted line corresponding to a discrete LiX interaction) or simple cyclic trimers.

Solution Structures of LiTMP/LiBr Mixed Aggregates. Spectroscopic analyses of $[\text{}^6\text{Li}]\text{-LiTMP/LiBr}$ and $[\text{}^6\text{Li},^{15}\text{N}]\text{-LiTMP/LiBr}$ reveal a much simpler scenario. Low concentrations

(22) Gilchrist, J. H.; Harrison, A. T.; Fuller, D. J.; Collum, D. B. *J. Am. Chem. Soc.* **1990**, *112*, 4069.

(23) We also noted in some early studies on the LiTMP/LiCl mixed aggregates that the peak shapes and coalescences are completely independent of the donor solvent and LiTMP absolute concentrations.

(24) Armstrong, D. R.; Barr, D.; Clegg, W.; Hodgson, S. M.; Mulvey, R. E.; Reed, D.; Snaith, R.; Wright, D. S. *J. Am. Chem. Soc.* **1989**, *111*, 4719 and references cited therein.

(25) For extensive reviews of structure studies on N-Li species, see: Mulvey, R. E. *Chem. Soc. Rev.* **1991**, *20*, 167. Gregory, K.; Schleyer, P. v. R.; Snaith, R. *Adv. Organomet. Chem.* In press.

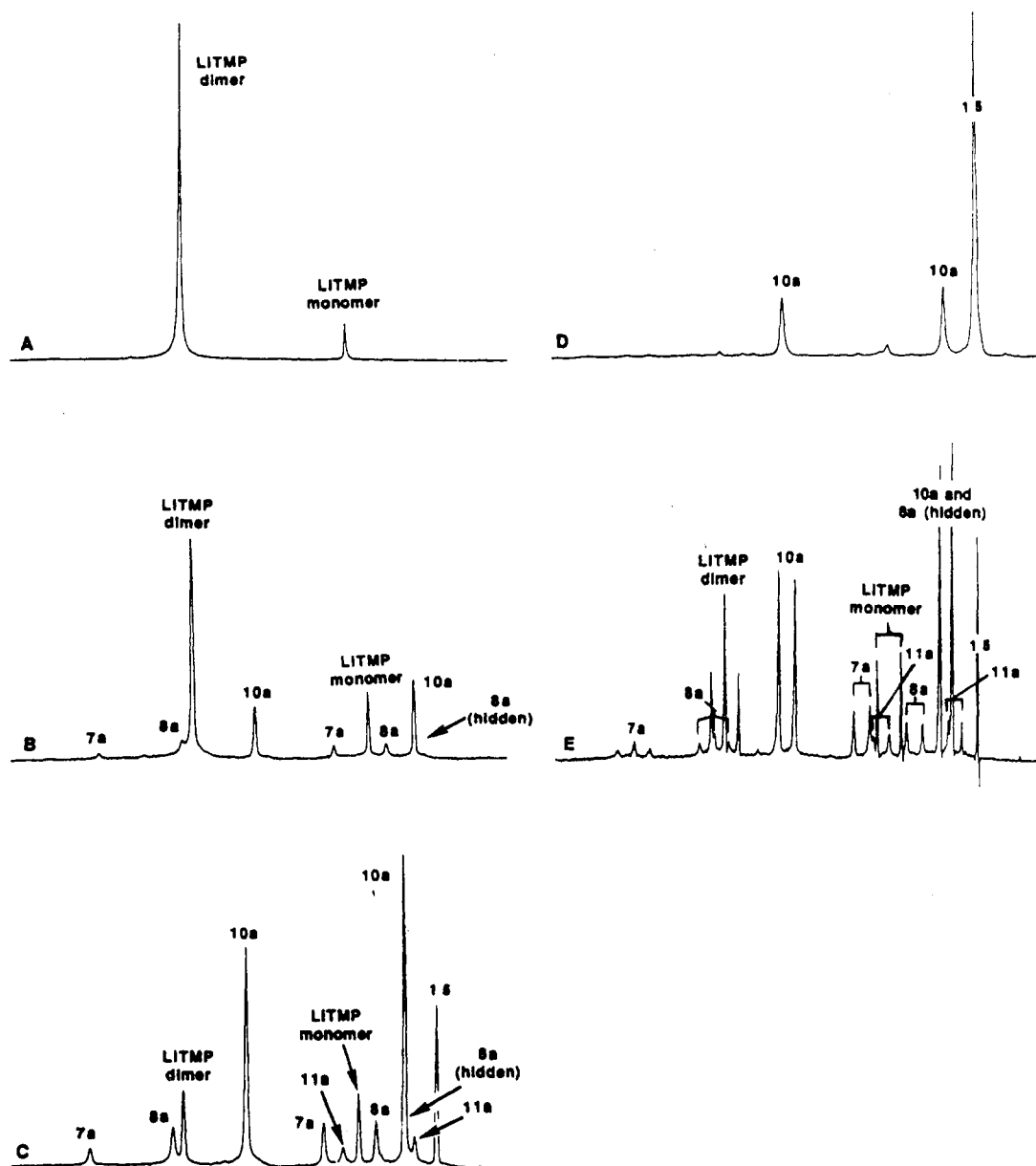


Figure 3. ^6Li NMR spectra of 0.1 M $[\text{Li}^6]\text{-LiTMP}$ in 3:1 THF/pentane at -120°C in the presence of (A) 0.0 equiv of **15**, (B) 0.2 equiv of **15**, and (C) 1.0 equiv of **15**. Spectrum D is at 0.02 M $[\text{Li}^6]\text{-LiTMP}$ with 4 equiv of **15** prepared by adding cyclohexanone to the appropriate concentration of $[\text{Li}^6]\text{-LiTMP}$. Spectrum E is of 0.12 M with 0.7 equiv of **15** prepared by adding cyclohexanone to the appropriate concentration of $[\text{Li}^6,^{15}\text{N}]\text{-LiTMP}$. The hidden resonance of **8a** can be detected by decoupling the appropriate ^{15}N nuclei of either **8a** or **10a** (Table II).

Table VI. ^{15}N NMR Spectroscopic Data of $[\text{Li}^6,^{15}\text{N}]\text{-LiTMP/LiBr}$ Mixtures

resonance	equiv of $^6\text{LiBr}$	temp, $^\circ\text{C}$	δ , ppm	mult (J , Hz) ^a	connectivity	assign ^b
N_f	0.5	-120	86.2	quint (5.2)	$\text{Li}_k\text{-N}_f\text{-Li}_j$	7b
N_g	1.5	-120	83.1	quint (5.3)	$\text{Li}_i\text{-N}_g\text{-Li}_m$	10b

^aquint = quintet. ^bAssignment of structure **7b** rather than **9b** is purely arbitrary as detailed in the text.

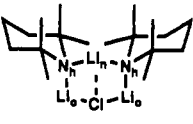
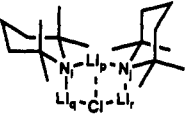
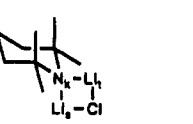
dimer **10b**. As the LiBr/LiTMP ratio exceeds 1:1, the LiTMP of a symmetric 2:1 mixed aggregate (**7b** or **9b**) are observable at low LiBr concentrations (Figures 5 and 6, Tables V and VI). However, the other symmetric and the unsymmetric 2:1 mixed aggregate (**8b**) are not detectable at any LiTMP/LiBr ratio—a result which contrasts sharply with the $\text{LiTMP/lithium enolate}$ mixtures (vide supra) and LiTMP/LiCl mixtures (vide infra). For the most part, increments of LiBr produce monotonically increasing concentrations of 1:1 mixed aggregate **10b** showing two ^6Li resonances (Li_i and Li_m ; 1:1) and one ^{15}N resonance (N_f). The multiplicities and atomic connectivities are consistent with mixed

is consumed and only the 1:1 mixed aggregate **10b** and free LiBr are observed. As before, assignment of Li_i and Li_j as axial and equatorial lithiums of **10b** stems from (1) cursory studies of $(t\text{-Bu})_2\text{NLi/LiBr}$ showing a single mixed aggregate ^6Li resonance (δ 0.90 ppm) in the limit of high LiBr concentration consistent with a conformationally unlocked 1:1 dimer structure rather than a 2:2 ladder, (2) comparable activation energies for $\text{Me}_{ax}\text{-Me}_{eq}$ and $\text{Li}_i\text{-Li}_m$ site exchanges in **10b** (Table IV), and (3) a substantial rate decrease in the $\text{Li}_{ax}\text{-Li}_{eq}$ site exchange for the conformationally locked LiPMP/LiBr dimer **16b**.

Solution Structures of LiTMP/LiCl Mixed Aggregates. ^6Li NMR spectra of $[\text{Li}^6]\text{-LiTMP/LiCl}$ and $[\text{Li}^6,^{15}\text{N}]\text{-LiTMP/LiCl}$ below -100°C show a complex distribution of resonances that proved to be especially challenging to deconvolute due to severe resonance overlaps (Figure 7 and Table VII).²⁶ While the as-

(26) Unassigned species in the mixtures of LiTMP/LiCl totalling approximately 5% of the NMR resonance integration proved to be independent of the source of LiTMP , solvents, and LiCl . They are most clearly detected as ^{15}N multiplets shown to be centered at 85.7, 84.6, and 84.1 ppm by broad-band ^6Li decoupling (Figure 8b).

Table VII. ^6Li NMR Spectroscopic Data of 0.1 M $[^6\text{Li},^{15}\text{N}]$ -LiTMP/LiCl Mixtures in 3:1 THF/Pentane

<div style="display: flex; justify-content: space-around; align-items: center;"> <div style="text-align: center;">  <p>7c</p> </div> <div style="text-align: center;">  <p>8c</p> </div> <div style="text-align: center;">  <p>10c</p> </div> </div>							
resonance	equiv of $^6\text{LiCl}$	temp, $^{\circ}\text{C}$	δ , ppm	mult (J , Hz) ^a	T_1 , s	connectivity	assign ^b
Li_n	0.4	-115	1.40	t (5.4)	1.2	$\text{N}_h\text{-Li}_n\text{-N}_h$	7c
Li_o	0.4	-115	0.61	d (4.9)	3.7	$\text{N}_h\text{-Li}_o$	7c
Li_p	0.4	-115	1.65	t (5.1)	1.2	$\text{N}_i\text{-Li}_p\text{-N}_j$	8c
Li_q	0.4	-115	1.19	d (5.5)	2.6	$\text{N}_i\text{-Li}_q$	8c
Li_r	0.4	-115	0.61 ^c	d (-) ^c	c	$\text{N}_j\text{-Li}_r$	8c
Li_s	1.0	-115	1.52	d (5.7)	3.1	$\text{N}_k\text{-Li}_s$	10c
Li_i	1.0	-115	0.59	d (4.8)	3.1	$\text{N}_k\text{-Li}_i$	10c
LiCl	1.0	-115	0.32	s	9.4		

^a a_s = singlet, d = doublet, t = triplet. The coupling constants were measured after resolution enhancement. ^b Assignment of structure 7c rather than 9c and the assignments of axial and equatorial lithium resonances are purely arbitrary as detailed in the text. ^c Li_i is hidden under Li_o . Its existence is inferred from the collapse of N_i upon decoupling Li_o (and presumably Li_p). The overlap precluded a measurement of $J_{\text{Li-N}}$ and T_1 .

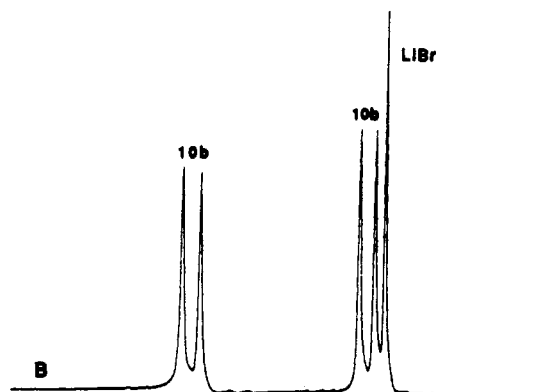
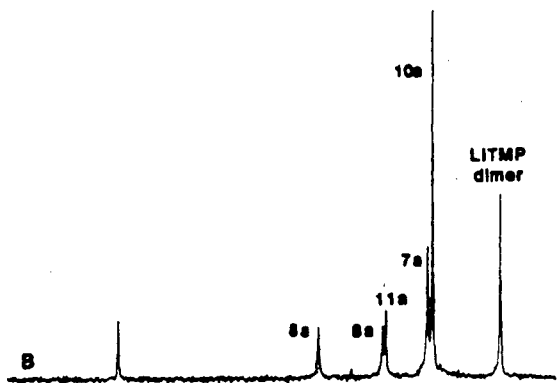
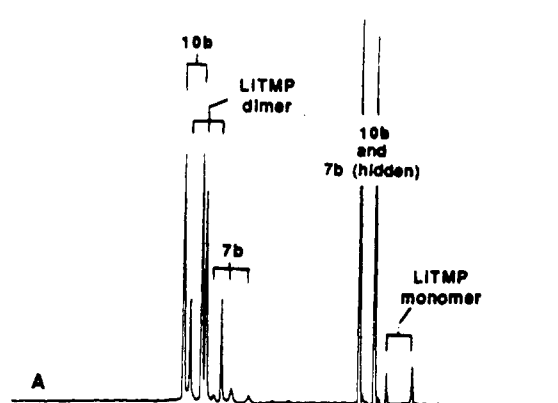
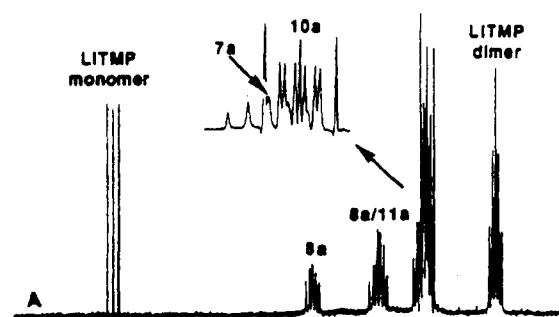


Figure 4. (A) ^{15}N NMR spectra of 0.12 M $[^6\text{Li},^{15}\text{N}]$ -LiTMP in 3:1 THF/pentane at -120°C with 0.7 equiv of **15** prepared by adding cyclohexanone to the appropriate concentration of $[^6\text{Li},^{15}\text{N}]$ -LiTMP. (B) Broad-band ^6Li decoupled version of spectrum A.

signments are the least rigorous of all, analogy with the enolate and LiBr cases is quite strong. Addition of 0.1 equiv of LiCl per LiTMP causes the appearance of five new resonances (labeled $\text{Li}_n\text{-Li}_r$). At 0.3–0.5 equiv of LiCl the intensities of $\text{Li}_n\text{-Li}_r$ reach maxima with concomitant disappearance of the resonances corresponding to monomeric and dimeric LiTMP. At >0.3 equiv of LiCl two new resonances (Li_s and Li_i) in a 1:1 ratio begin to appear, becoming the only prominent mixed aggregate resonances in the limit of high (>1.0 equiv) LiCl content. Only resonances Li_q and Li_p display significant temperature-dependent chemical shifts. Throughout a range of LiCl, THF, and absolute concentrations the relative intensities of $\text{Li}_n\text{-Li}_r$ remain fixed as does the 1:1 $\text{Li}_s\text{:Li}_i$ ratio.

Selected ^{15}N NMR spectra of $[^6\text{Li},^{15}\text{N}]$ -LiTMP/LiCl are illustrated in Figure 8 and the data listed in Table VIII. The appearance of three quintets at low LiCl content (labeled $\text{N}_h\text{-N}_j$)

Figure 5. ^6Li NMR spectra of 0.1 M $[^6\text{Li},^{15}\text{N}]$ -LiTMP in 3:1 THF/pentane at -120°C in the presence of (A) 0.5 equiv of $[^6\text{Li}]\text{-LiBr}$ and (B) 1.5 equiv of $[^6\text{Li}]\text{-LiBr}$. The hidden resonance of **7b** can be detected by decoupling the appropriate ^{15}N nuclei of either **7b** or **10b** (Table II).

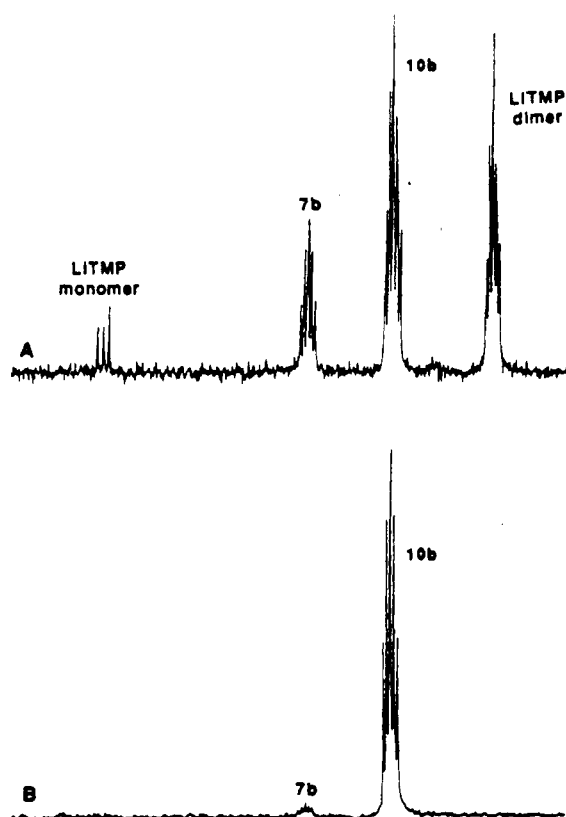
coincides with the appearance of resonances $\text{Li}_n\text{-Li}_r$ in the ^6Li NMR spectra. Similarly, the existence of a solitary quintet in the limit of high LiCl content (N_k) correlates with ^6Li resonances Li_s and Li_i . Single-frequency decoupling of ^{15}N resonances $\text{N}_h\text{-N}_k$ provides rigorous $^6\text{Li}/^{15}\text{N}$ resonance correlations (Tables VII and VIII; decoupling are included as Supplementary Material).

From the available multiplicities, integrations, and resonance correlations emerge the connectivities listed in Tables VII and VIII. As described above, evidence that we were observing conformational isomers in the slow exchange limit includes the following: (1) Substantially simplified spectra are observed for $[^6\text{Li}]\text{-(}t\text{-Bu)}_2\text{NLi/LiCl}$, showing a single 2:1 mixed aggregate (δ

Table VIII. ^{15}N NMR Spectroscopic Data of $[^6\text{Li},^{15}\text{N}]\text{-LiTMP/LiCl}$ Mixtures^{b,c}

resonance	equiv of $^6\text{LiCl}$	temp, $^{\circ}\text{C}$	δ , ppm	mult (J, Hz) ^a	connectivity	assign ^{b,c}
N_h	0.3	-115	85.6	tt (5.3, 4.9)	$\text{Li}_n\text{-N}_h\text{-Li}_o$	7c
N_i	0.3	-115	86.7	quint (5.1)	$\text{Li}_p\text{-N}_i\text{-Li}_r$	8c
N_j	0.3	-115	85.6		$\text{Li}_p\text{-N}_j\text{-Li}_q$	8c
N_k	0.3	-123 ^d	85.9	quint (5.2)	$\text{Li}_p\text{-N}_k\text{-Li}_q$	8c
N_l	0.3	-102 ^d	84.8	quint (5.2)	$\text{Li}_p\text{-N}_l\text{-Li}_q$	8c
N_m	1.0	-115	82.6	tt (5.6, 4.8)	$\text{Li}_s\text{-N}_m\text{-Li}_t$	10c

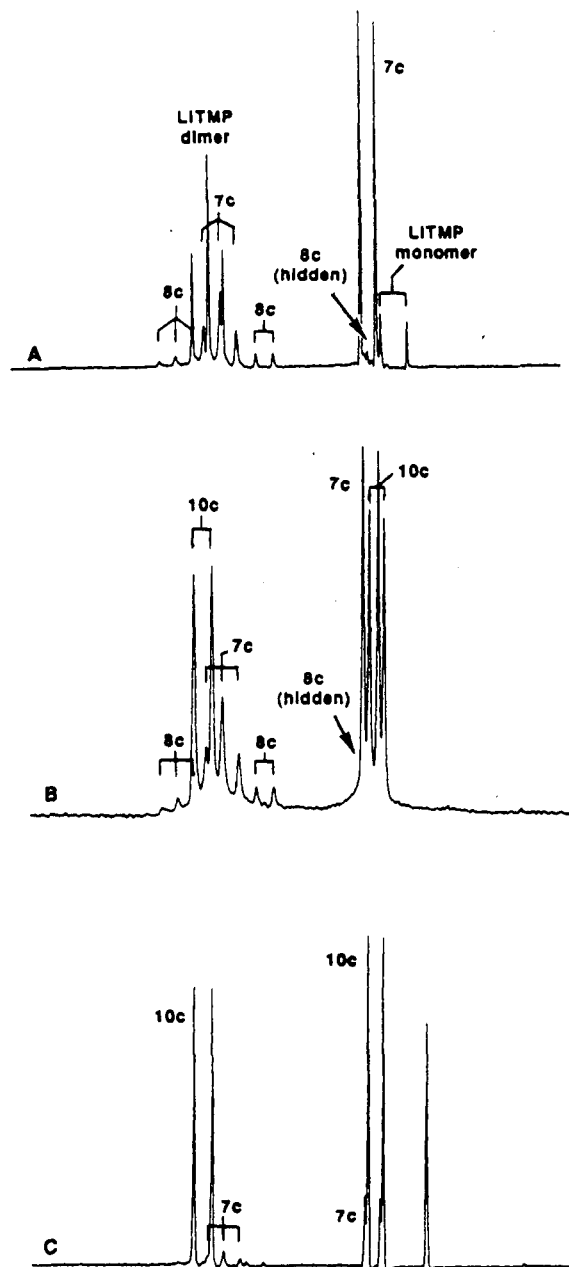
^as = singlet, t = triplet, tt = triplet of triplet, quint = quintet. ^bAssignment of structure 7a rather than 9a and the assignments of axial and equatorial lithium resonances are purely arbitrary as detailed in the text. ^cSeveral minor ^{15}N resonances corresponding to approximately 5% of the total integration remained uncharacterized (ref 26).

**Figure 6.** ^{15}N NMR spectra of 0.1 M $[^6\text{Li},^{15}\text{N}]\text{-LiTMP}$ of 3:1 THF/pentane at -120°C in the presence of (A) 0.5 equiv of $[^6\text{Li}]\text{-LiBr}$ and (B) 1.5 equiv of $[^6\text{Li}]\text{-LiBr}$.

0.64 and 1.59 ppm) and a 1:1 mixed aggregate displaying a single resonance (δ 0.95 ppm). (This also argues that the limiting structure of LiTMP/LiCl is dimer 10c rather than ladder 11c.) (2) Equivalent free activation energies are observed for the $\text{Me}_{\text{ax}}\text{-Me}_{\text{eq}}$ and the $\text{Li}_s\text{-Li}_t$ site exchanges (Table IV). (3) Substantially decreased rates of $\text{Li}_{\text{ax}}\text{-Li}_{\text{eq}}$ site exchanges are observed in the 1:1 LiPMP/LiCl mixed aggregate 16c (0.68 and 1.50 ppm). It should be noted once again that assignment of the symmetric 2:1 mixed aggregate as 7c or 9c cannot be made at this time. Secondly, ladder structures (with the central dotted line corresponding to a discrete LiX interaction) and simple cyclic trimers (with no such Li-Cl transannular interaction) cannot be distinguished.

Discussion

LiTMP Solution Structures. The assignment of LiTMP in THF as a monomer-dimer mixture by Fox and Renaud appears to be correct.¹⁵ Unequivocally, LiTMP exists as a mixture of monomer and cyclic oligomer in THF. One normally cannot distinguish a cyclic dimer from topologically equivalent higher oligomers such as cyclic trimers or tetramers using the available NMR methods. In the past we have relied upon crystallographic, spectroscopic, and theoretical studies to tentatively conclude that the higher oligomers of lithium dialkylamides are stable only in the *absence of donor solvents*.²⁵ More recently, one-dimensional $^6\text{Li}/^{15}\text{N}$

**Figure 7.** ^6Li NMR spectra of 0.1 M $[^6\text{Li},^{15}\text{N}]\text{-LiTMP}$ in 3:1 THF/pentane at -115°C in the presence of (A) 0.3 equiv of $[^6\text{Li}]\text{-LiCl}$, (B) 0.6 equiv of $[^6\text{Li}]\text{-LiCl}$, and (C) 1.2 equiv of $[^6\text{Li}]\text{-LiCl}$. The "hidden" resonance of 8c has not been directly observed. Its existence and location are inferred from collapse of the corresponding ^{15}N resonance of 8c (N_i) upon irradiation at 0.6 ppm in the ^6Li spectrum (see Table VII).

single-frequency decoupling experiments on a *single* lithiated imine rigorously excluded higher cyclic oligomers as the observable solvated aggregates.²² Spectroscopic characterization of dimeric LiTMP and LDA mixed solvates¹⁸ strongly supports the LiTMP dimer assignment. Studies of the conformationally locked LiPMP

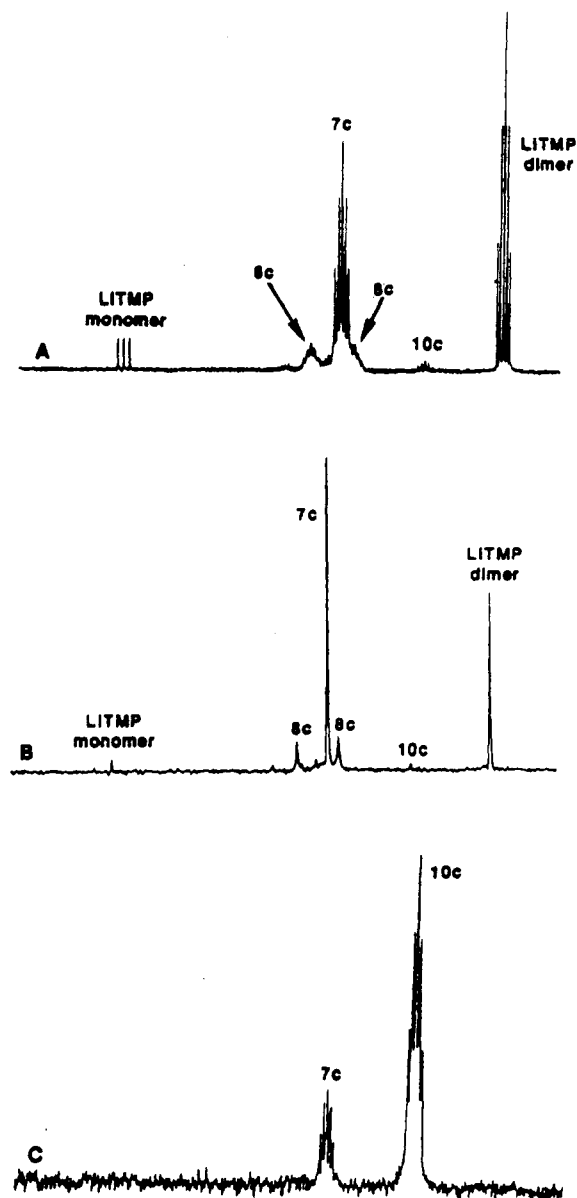


Figure 8. ^{15}N NMR spectra of 0.1 M $[\text{}^6\text{Li}, \text{}^{15}\text{N}]\text{-LiTMP}$ in 3:1 THF/pentane in the presence of varying equivalents of LiCl: (A) 0.3 equiv of $[\text{}^6\text{Li}]\text{-LiCl}$ ($-102\text{ }^\circ\text{C}$); (B) 0.3 equiv of $[\text{}^6\text{Li}]\text{-LiCl}$ ($-102\text{ }^\circ\text{C}$) with broad-band ^6Li decoupling (30.42 rather than 40.52 MHz); and (C) 1.2 equiv of $[\text{}^6\text{Li}]\text{-LiCl}$, $-115\text{ }^\circ\text{C}$.

(17) establish a C_{nh} symmetry consistent with assignment of the LiTMP aggregate as dimer 5. Work is in progress to resolve the dimer vs trimer issue for a wide range of lithium amides. See Note Added in Proof.³³

LiTMP/LiX Solution Structures. The complex ^6Li and ^{15}N NMR spectra arising from LiTMP-enolate and LiTMP-LiCl mixtures do not facilitate rigorous structure assignments. Nevertheless, several experiments demonstrate that the spectral complexity stems from conformational isomers surrounding the chair-like piperidine ring system; studies of conformationally mobile (*t*-Bu)₂NLi and conformationally locked LiPMP (2) proved especially revealing. We completed the structure assignments summarized in Scheme I. The distribution of mixed aggregates is highly gegenion-dependent. In the lithium cyclohexenolate series, all structures except one of the symmetric mixed dimers (7a or 9a) can be observed. The LiBr series was far simpler, showing primarily mixed dimer 10b and limited concentrations of a symmetric mixed trimer (7b or 9b). In the LiCl series we detected unsymmetric and symmetric mixed trimers (8c and either 7c or 9c), mixed dimer 10c, and minor concentrations (<5%) of uncharacterized species. In all three series, distinction of the

symmetric 2:1 mixed aggregates (7 vs 9) has not been attempted. Similarly, the differentiation of the 2:1 mixed aggregates as simple cyclic mixed trimers or 3-rung ladder structures has not been achieved. While we favor the ladder structural type from analogies with crystal structures of Snaith,²⁵ Williard,²⁷ and others,²⁸ the suggestion is still precariously based on intuition. One point that became very clear during the course of the structural studies, however, is that the power of the $^6\text{Li}\text{-}^{15}\text{N}$ double-labeling studies for unravelling the structures of complex mixed aggregates is dramatically enhanced by $^6\text{Li}/^{15}\text{N}$ resonance correlations.²² We also suggest that the conformational properties of methylated lithium piperidine derivatives, although clearly very troublesome in these early studies, may eventually provide powerful structure probes in future studies, with the conformationally locked LiPMP playing a central role.

Some comments on the high propensity of LiTMP to form mixed aggregates are warranted. We have found, for example, that the less sterically demanding lithium diisopropylamide (LDA) dimer exhibits a substantially lower propensity to form mixed aggregates than does LiTMP.²⁹ With highly hindered enolates, we see soft equilibria with LDA-enolate mixed dimers to the exclusion of mixed trimers. A 1:1 mixture of LDA and the sterically unhindered cyclohexanone enolate shows essentially no (<5%) mixed dimer. Thus, some feature of LiTMP appears to provide the driving force for the formation of mixed dimers, trimers, and tetramers; several indicators point to the steric demands of solvation as the culprit. If the mixed trimers (7-9) are ladder structures, it follows primarily from the work of Snaith²⁵ that this would allow the internal lithium nuclei to remain unsolvated as evidenced by a number of crystal structures of 3- and 4-rung ladders. Similarly, formation of 2:2 mixed aggregate 11a from 10a would result in the extrusion of solvent molecules. In this context, we underscore the THF concentration dependencies showing that dimer 10a is more highly solvated (per Li) than the mixed aggregates 7a (or 9a), 8a, and 11a. Secondly, solution structure studies of LiTMP and LDA in the presence of hexamethylphosphoramide (HMPA) show strikingly divergent properties; LDA retains the dimer structure while the LiTMP dimer readily forms open dimers and ion triplets.¹⁸

Overall, mixed dimerization with sterically unhindered LiX species would provide a very efficient mechanism for decreasing the steric demands of LiTMP aggregates. Furthermore, formation of less solvated ladder structures with concomitant extrusion of solvent would provide additional steric relief.

On the Selectivity of Enolization. The previous paper demonstrated that the ketone enolizations by LiTMP in THF appear to be kinetically controlled metalations that are markedly influenced by the presence of lithium enolates, lithium chloride, or lithium bromide. It seems likely that the salt-dependent selectivities stem from the intervention of mixed aggregates in the product determining transition state(s). That is not to say, however, that we can suggest a mechanistic hypothesis. During the course of the enolizations the reaction conditions are changing continuously as a function of percent conversion; the mechanisms operating at early conversion are certainly not the same (or at least not in the same proportions) as those at the latter stages of the reaction. The primary conclusion is that any working model must at least consider the role of mixed aggregates, and the TMSCl in situ tapping protocol gaining popularity is surely not well understood at this time.¹⁰⁻¹²

Experimental Section

Reagents and Solvents. The general experimental procedures have been described previously.⁹ Isotopically labeled ethyllithium,¹⁴ lithium cyclohexenolate,^{14b} and (*t*-Bu)₂NLi were prepared as described.⁹ The

(27) A four rung LDA/enolate ladder structure has been characterized crystallographically: Williard, P. G.; Hintze, M. J. *J. Am. Chem. Soc.* **1987**, *109*, 5539.

(28) Hey, E.; Hitchcock, P. B.; Lappert, M. F.; Rai, A. K. *J. Organomet. Chem.* **1987**, *325*, 1. Raston, C. L.; Whitaker, C. R.; White, A. H. *Inorg. Chem.* **1989**, *28*, 163 and references cited therein.

(29) Galiano-Roth, A. S.; Kim, Y. J.; Gilchrist, J. H.; Harrison, A. T.; Fuller, D. J.; Collum, D. B. *J. Am. Chem. Soc.* **1991**, *113*, 5053.

isotopomers of LiTMP were prepared with ^6Li -ethylolithium and purified by an additional recrystallization from hexane. ^6Li metal (95.5% enriched) was obtained from Oak Ridge National Laboratory. ^{15}N - NH_4Cl (99%) was obtained from Cambridge Isotope Laboratory and used without further purification.

^{15}N -2,2,6,6-Tetramethylpiperidine was prepared by modification of a literature procedure³⁰ as follows. A 100-mL glass bomb with a Teflon needle valve and a magnetic stir bar was charged with ^{15}N - NH_4Cl (3.00 g, 55.1 mmol), anhydrous dibasic sodium phosphate (3.60 g, 25.3 mmol), phorone (11.9 g, 86.4 mmol), and benzene (15 mL). The contents of the vessel were frozen (to prevent premature liberation of ammonia gas) and layered with a 6.0 M solution of sodium hydroxide (12.2 mL, 73 mmol). The vessel was evacuated, sealed, and heated with stirring at 95 °C for 10 days. The aqueous layer was removed and extracted with 3 \times 40 mL of methylene chloride. The extracts were combined with the initial organic phase, dried over anhydrous potassium carbonate, and filtered. Concentration in vacuo followed by treatment of the resulting light brown, low-melting solid with 2:1 toluene/hexane (400 mL) and anhydrous HCl gas afforded a precipitate. Sequential filtration, resuspension in hexane, filtration, and drying in vacuo afforded ^{15}N -2,2,6,6-tetramethyl-4-piperidone hydrochloride (9.62 g, 91% yield based on ^{15}N - NH_4Cl) as a beige solid of suitable purity for the next step. Mp 186–187 °C dec (authentic commercial sample mp 188–190 °C); ^1H NMR (D_2O) δ 0.61 (d, $J_{\text{N-H}} = 2.7$ Hz, 12 H), 1.84 (d, $J_{\text{N-H}} = 2.0$ Hz, 4 H). $^{13}\text{C}\{^1\text{H}\}$ NMR (D_2O) δ 208.1 (s), 59.7 (s), 49.5 (s), 27.37 (s). The free amine available from extraction could also be isolated as an off-white solid. ^1H NMR (CDCl_3) δ 1.24 (d, $J_{\text{N-H}} = 2.6$ Hz, 12 H), 2.26 (d, $J_{\text{N-H}} = 0.8$ Hz, 12 H).

^{15}N -2,2,6,6-Tetramethyl-4-piperidone hydrochloride (8.98 g, 46.6 mmol), triethylene glycol (50 mL), 85% hydrazine hydrate (12.0 mL, 204 mmol), and 85% KOH pellets (12.0 g, 180 mmol) were mixed and then heated to 190 °C for 7 h followed by 210 °C for 7 h. The product was steam distilled, extracted into ether, and dried over K_2CO_3 . The ether was removed by simple distillation with further fractional distillation (149–150 °C; uncorrected) affording crude ^{15}N -2,2,6,6-tetramethylpiperidine (3.54 g, 53% yield) as a colorless oil. The product was dried by fractional distillation from lithium aluminum hydride and shown to be >99% pure by GC. Yield 3.07 g (46% yield from the piperidone hydrochloride); bp = 149–150 °C; ^1H NMR (CDCl_3) δ 1.08 (d, $J_{\text{N-H}} = 2.5$ Hz, 12 H), 1.24 (m, 4 H), 1.54 (m, 2 H). ^{13}C NMR (CDCl_3) δ 49.5 (s, quat C), 38.5 (t, CH_2), 31.4 (q, CH_3), 16.2 (t, CH_2).

2,2,4,6,6-Pentamethylpiperidine. The pentamethylated piperidine used to prepare lithium amide **2** was prepared as follows. A 0.47 M solution of $\text{CH}_2=\text{PPh}_3$ was prepared by addition of 1.63 M *n*-BuLi/hexane (144 mL, 235 mmol) to a suspension of methylenetriphenylphosphonium bromide (84 g, 235 mmol) in 300 mL of anhydrous THF. The ylide solution was added to 16.1 g (104.3 mmol) of solid 2,2,6,6-tetramethyl-4-piperidone (as free base, see above) until the yellow color of the ylide persisted. GC analysis showed a 9:1 ratio of product to starting material irrespective of reaction time and quantity of added ylide, indicating that partial enolization was occurring competitively. Accordingly, the reaction was back-titrated with enough CF_3COOH to dissipate the yellow ylide color and quench the estimated 10% enolate. Additional ylide was added until the yellow color once again persisted. Several such iterations effected complete conversion (>500:1). The reaction was quenched with a mixture of 30 g of ice and 50 mL of 5% aqueous HCl. Following 2 \times 30 mL washes, the combined aqueous layers containing the amine hydrochloride were extracted with 3 \times 50 mL of Et_2O , basified to pH 10 with 40% NaOH, and extracted with 3 \times 60 mL of Et_2O . The Et_2O layers were treated with 8.10 mL (12.0 g, 10.5 mmol) of trifluoroacetic acid and evacuated to afford the crude trifluoroacetate salt as a white solid. Recrystallization from toluene afforded 22.65 g (81% yield) of 4-methylene-2,2,6,6-tetramethylpiperidinium trifluoroacetate as a white crystalline solid. Extractive workup followed by distillation afforded amine as a colorless liquid. ^1H NMR (CDCl_3) δ 4.84 (m, 2 H), 1.89 (m, 4 H), 1.04 (s, 12 H); $^{13}\text{C}\{^1\text{H}\}$ NMR (CDCl_3) δ 144.4 (s, $\text{C}=\text{CH}_2$), 110.0 (t, $\text{H}_2\text{C}=\text{C}$), 51.9 (s, CCH_3), 48.1 (t, CH_2), 31.1 (q, CH_3).

Stirring a solution of 4-methylene-2,2,6,6-tetramethylpiperidinium trifluoroacetate (11.39 g, 42.6 mmol) in 150 mL of MeOH containing PtO_2 hydrate (20 mg, 0.088 mmol) and 40 mg of activated carbon (Norit) for 3 h under 1.1 atm of H_2 resulted in complete loss of starting material as shown by GC analysis. Filtration through Celite and in vacuo removal of solvent afforded 10.67 g (93% crude yield) of white solid. Following partitioning of the solid between 30 mL of 10% NaOH and

3 \times 15 mL of Et_2O , the combined organic layers were dried over K_2CO_3 . Fractional distillation afforded a forerun of Et_2O followed by 4.42 g (67% yield) of 2,2,4,6,6-pentamethylpiperidine as a colorless liquid (bp = 157–160 °C). ^1H NMR (acetone- d_6) δ 1.80 (>20 line m, 1 H), 1.53 (dd, 2 H, $J_{\text{ax-eq}} = 3.3$ Hz, $J_{\text{gem}} = 12.9$ Hz, equatorial CHH), 1.14 (m, 6 H, axial CH_3), 1.05 (q, 6 H, $J_{\text{long range}} = 0.6$ Hz, equatorial CH_3), 0.86 (d, 3 H, $J = 6.7$ Hz, 4- CH_3), 0.65 (ddq, 2 H, $J_{\text{ax-eq}} = 12.1$ Hz, $J_{\text{gem}} = 12.8$ Hz, axial CHH , $J_{\text{long range}} = 0.9$ Hz). Note: All resonances except that at 0.86 ppm show long-range coupling that has not been fully deconvoluted at this time. $^{13}\text{C}\{^1\text{H}\}$ NMR (CDCl_3) δ 144.4 (s, $\text{C}=\text{CH}_2$), 110.0 (t, $\text{H}_2\text{C}=\text{C}$), 51.9 (s, CCH_3), 48.1 (t, CH_2), 31.1 (q, CH_3).

^{15}N -2,2,4,6,6-Pentamethylpiperidine was prepared by using a scaled-down procedure analogous to that described above.

^6Li , ^{15}N -Lithium 2,2,6,6-tetramethylpiperidide (LiTMP) was prepared by elaboration of a literature procedure¹³ as follows. To a magnetically stirred solution of freshly sublimed ^6Li -ethylolithium (225 mg, 6.41 mmol) in pentane (40 mL) under Ar was added ^{15}N -2,2,6,6-tetramethylpiperidine (1.24 mL, 1.04 g, 7.32 mmol) in one portion via gas-tight syringe. After stirring for 14 h (shorter times afforded reduced yields), the slightly turbid mixture was sequentially filtered, evacuated to $2/3$ the original volume, cooled to –78 °C, and filtered to collect the solids. Recrystallization from ca. 30 mL of hexane afforded ^6Li , ^{15}N -2,2,6,6-tetramethylpiperidide (0.52 g, 55% yield) as a white, crystalline solid. The material was shown to be pure (except for traces of amine) by ^6Li , ^{15}N , and ^{13}C NMR spectroscopy (Cf. Tables I–III). Titration indicated 95% of the theoretical titer.

Lithium 2,2,4,6,6-Pentamethylpiperidide (^6Li -LiPMP and ^6Li , ^{15}N -LiPMP). LiPMP is prepared in 40–50% recrystallized yield by an analogous procedure to that used for LiTMP. Carbon NMR data are listed in Table III. ^6Li NMR (3:1 THF/pentane) δ 1.50 (dd, $J_{\text{LiN}} = 5.1$ and 4.5 Hz, dimer), δ 0.48 (d, $J_{\text{LiN}} = 8.4$ Hz, monomer); $^{15}\text{N}\{^1\text{H}\}$ NMR δ 91.5 (t, $J_{\text{LiN}} = 8.4$ Hz, monomer), 78.1 (tt, $J_{\text{LiN}} = 4.7$ and 5.2 Hz, dimer), 74.4 (s, free amine).

^6Li -LiBr was prepared and dried³¹ as follows. An argon-flushed, 1-L, 3-necked flask fitted with a mechanically rotated nichrome wire paddle was charged with 100 mL of degassed mineral oil and ^6Li metal (4.1 g, 680 mmol, 0.5% sodium). Upon liquefying the lithium into small droplets by vigorous stirring while heating with a flame (Caution!), the flame was removed and the mixture was cooled with an ambient temperature oil bath to solidify the lithium metal droplets. The excess oil was removed via cannula and the lithium metal was rinsed by vacuum transferring hexane and filtering. The resulting lithium sand was suspended in dry, vacuum-transferred THF (500 mL), cooled in a water bath, and treated with ethylene dibromide (64.1 g, 340 mmol). After the mixture was stirred for 2 h, the resulting suspension was diluted with THF (approx. 100 mL), filtered through Celite, and evacuated to give 48 g of crude ^6Li -LiBr as a white solid. The solid was dissolved in 20 mL of water (by refluxing), and the resulting aqueous layer was extracted with xylene (2 \times 10 mL), filtered, cooled to –15 °C, and filtered to remove the solid lithium bromide. After the recrystallization/filtration procedure was repeated two more times the white solid was dried in vacuo at 160 °C for 12 h, dissolved in dry (vacuum transferred) THF, filtered under argon to remove insoluble impurities, and dried in vacuo at 130 °C for 5 h to remove the THF. Yield: 4.5 g of ^6Li -LiBr.

NMR Spectroscopic Analyses. ^{13}C NMR spectra were recorded on Varian XL-200 or XL-400 spectrometers operating at 50.30 and 100.56 MHz, respectively. ^{13}C chemical shifts are reported in ppm downfield of tetramethylsilane with deuterated solvent resonances as secondary standards. ^6Li NMR spectra were recorded on a Varian XL-400 or Bruker AC 300 spectrometer operating at 58.84 and 44.17 MHz (respectively) and referenced to an external 0.3 M $^6\text{LiCl}$ /methanol standard at –100 °C according to the suggestion of Reich and co-workers.³² ^{15}N spectra were recorded with inverse gated ^1H decoupling on a Varian XL-400 or a Bruker AC 300-MHz NMR spectrometer operating at 40.52 and 30.42 MHz (respectively) and referenced to an external 0.15 M ^{15}N -aniline/THF standard set at 50 ppm with internal ^{15}N -2,2,6,6-tetramethylpiperidine at –115 °C (75.6 ppm) as a secondary standard. NMR probe temperatures are accurate to ± 2 °C. Magnetic field inhomogeneity was adjusted by using line shape and ^1H free induction decays rather than the deuterium lock solvent to maximize field homogeneity. Samples requiring extended ^{15}N acquisition times included 10–15% THF- d_6 and utilized the ^2H lock. Other data were acquired unlocked. ^6Li integrations were performed on spectra acquired with 90°

(30) Guareschi, I. *Atti della Reale Accademia delle Scienze di Torino* **1894**, 29, 680. Leonard, N. J.; Nommensen, E. W. *J. Am. Chem. Soc.* **1949**, 71, 2808.

(31) Pray, A. R. *Inorg. Synth.* **1957**, 5, 153. Simmons, J. P.; Freimuth, H.; Russell, H. *J. Am. Chem. Soc.* **1936**, 58, 1692.

(32) Reich, H. J.; Green, D. P. *J. Am. Chem. Soc.* **1989**, 111, 8729.

(33) **Note Added in Proof:** Recent studies using inverse-detected ^{15}N homonuclear zero-quantum NMR spectroscopy have clearly demonstrated that the cyclic oligomer of ^6Li , ^{15}N -LiTMP observed in THF/pentane is a dimer rather than a trimer or higher oligomer. Gilchrist, J. H.; Collum, D. B. *J. Am. Chem. Soc.*, in press.

pulses on fully relaxed ($>5 \times T_1$) samples. Resolution enhancements, where indicated, were performed by Lorentz-Gaussian multiplication of the FID prior to Fourier transformation. T_1 spin-lattice relaxation times were determined by exponential fits of data from inversion/recovery experiments. The hardware modifications necessary for single-frequency irradiations are described elsewhere.²²

The following is a representative procedure for preparing samples for NMR spectroscopic analysis. Working in an inert atmosphere glovebox, [$^6\text{Li},^{15}\text{N}$]-LiTMP (0.103 g, 0.70 mmol), [^6Li]-LiBr (358 mg, 4.17 mmol), and diphenylacetic acid (200 mg, 0.942 mmol) were added to volumetric flasks containing stir fleas and capped with serum stoppers. An additional serum vial fitted with a stir flea and serum cap, the three samples prepared above, and four NMR tubes fitted with serum stoppers were removed from the glovebox and placed under positive nitrogen pressure with needle inlets. To the vial containing the [$^6\text{Li},^{15}\text{N}$]-LiTMP cooled to -78°C was added THF (1.40 mL) down the walls with constant agitation to minimize local heating. Solutions of [^6Li]-LiBr (0.417 M) and diphenylacetic acid (0.0942 M) were prepared by bringing the volumes to 10.0 mL with dry THF (accounting for the volume of the stir flea). The LiTMP titer was determined by adding 0.17 mL of the LiTMP stock solution to 0.5 mL of THF in the last serum vial and titrated to a yellow-to-colorless endpoint with diphenylacetic acid in THF at -20°C . The NMR tubes were each charged with 190 μL of dry pentane, 100 μL of THF- d_8 , 0.016 mmol of the [$^6\text{Li},^{15}\text{N}$]-LiTMP stock solution, variable quantities of the LiBr stock solution, and enough THF

to result in a final volume of 750 μL . Samples were flame sealed at -78°C under reduced pressure and stored at -78°C until the spectroscopic analyses were complete.

Acknowledgment. We thank W. T. Saunders (University of Rochester), L. M. Jackman (Penn State), P. v. R. Schleyer (Erlangen), R. Snaith (Cambridge), and P. G. Williard (Brown) for providing pertinent manuscripts prior to publication. We also wish to thank Jim Simms of MIT and Brian Andrew of Bruker for several very helpful discussions and Timothy Saarinen of Varian for assistance in recording several spectra at the Varian Applications Lab. We acknowledge the National Science Foundation Instrumentation Program (CHE 7904825 and PCM 8018643), the National Institutes of Health (RR02002), and IBM for support of the Cornell Nuclear Magnetic Resonance Facility. We also thank the National Institutes of Health for direct support of this work.

Supplementary Material Available: Figures showing single-frequency ^{15}N decouplings of [$^6\text{Li},^{15}\text{N}$]-LiTMP/lithium cyclohexenolate (15), [$^6\text{Li},^{15}\text{N}$]-LiTMP/LiBr, and [$^6\text{Li},^{15}\text{N}$]-LiTMP/LiCl (4 pages). Ordering information is given on any current masthead page.

Large Rate Accelerations in the Stille Reaction with Tri-2-furylphosphine and Triphenylarsine as Palladium Ligands: Mechanistic and Synthetic Implications

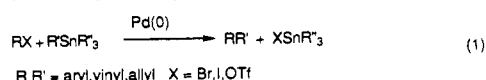
Vittorio Farina* and Bala Krishnan

Contribution from the Bristol-Myers Squibb Research Institute, 5 Research Parkway, P.O. Box 5100, Wallingford, Connecticut 06492-7660. Received March 4, 1991

Abstract: The effect of changing the palladium ligands on the rates of typical Stille cross-coupling reactions was studied. Large rate enhancements (typically 10^2 – 10^3 over triphenylphosphine-based catalysts) were observed with tri-2-furylphosphine (TFP) and triphenylarsine, which are recommended as the new ligands of choice in the palladium-catalyzed coupling between olefinic stannanes and electrophiles. On the basis of the evidence presented, the transmetalation, which is the rate-determining step in the catalytic cycle, is postulated to involve a π -complex between the metal and the stannane double bond. In general, ligands that readily dissociate from Pd(II) and allow ready formation of this π -complex are the ones that produce the fastest coupling rates. The utility of the new ligands is demonstrated with several synthetic examples.

Introduction

Transition-metal-catalyzed cross-coupling reactions are an extremely powerful tool in organic synthesis.¹ The choice of organometallic reagent and catalyst for a particular application is dictated by a variety of factors, including, for example, compatibility with other functional groups or protecting groups (chemoselectivity), the thermal stability of the substrate, the desire for regio- and stereospecificity, ease of operation, and economic factors. The palladium-catalyzed coupling of unsaturated halides or sulfonates with organostannanes,^{2,3} now commonly referred to as the Stille reaction, is gaining the favor of the synthetic community at an impressive pace (eq 1). This is due to the growing



availability of the organostannanes,⁴ their stability to air and

moisture, and the fact that the Stille chemistry is compatible with virtually any functional group, thereby eliminating the need for protection/deprotection strategies which are a necessity with most organometallic reactions. There is, however, a feature that may limit the usefulness of the Stille methodology: the relatively drastic conditions that must be sometimes used to induce coupling. Temperatures as high as 100°C are not unusual, and this may reduce the yields due to thermal instability of substrates, products, or the catalyst itself.

This suggested to us that an improvement over the typical Stille conditions would be a useful development in organic synthesis, since it would help extend the range of applications of this already powerful methodology. Our interest in this chemistry was stimulated by the observation⁵ that the classical Stille conditions failed when applied to a class of substrates, the 3-(triflyloxy)cephems, which are particularly sensitive to the rather harsh conditions described by Stille⁶ for this type of coupling. Our observation

(1) Collman, J. P.; Hegedus, L. S.; Norton, J. R.; Finke, R. G. *Principles and Applications of Organotransition Metal Chemistry*; University Science Books: Mill Valley, CA, 1987.

(2) Stille, J. K. *Angew. Chem., Int. Ed. Engl.* **1986**, *25*, 508–24.

(3) Beletskaya, I. P. *J. Organomet. Chem.* **1983**, *250*, 551–64.

(4) Pereyre, M.; Quintard, J. P.; Rahm, A. *Tin in Organic Synthesis*; Butterworths: London, 1987.

(5) Farina, V.; Baker, S. R.; Benigni, D. A.; Hauck, S. I.; Sapino, C. J. *Org. Chem.* **1990**, *55*, 5833–47.

(6) Scott, W. J.; Stille, J. K. *J. Am. Chem. Soc.* **1986**, *108*, 3033–40.