

Protein Contaminants Matter: Building Universal Protein Contaminant Libraries for DDA and DIA Proteomics

Ashley M. Frankenfield, Jiawei Ni, Mustafa Ahmed, and Ling Hao*

Cite This: <https://doi.org/10.1021/acs.jproteome.2c00145>

Read Online

ACCESS |



Metrics & More



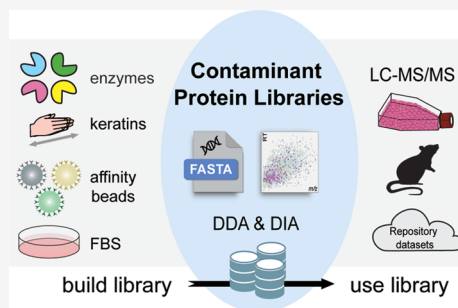
Article Recommendations



Supporting Information

ABSTRACT: Mass spectrometry-based proteomics is constantly challenged by the presence of contaminant background signals. In particular, protein contaminants from reagents and sample handling are almost impossible to avoid. For data-dependent acquisition (DDA) proteomics, an exclusion list can be used to reduce the influence of protein contaminants. However, protein contamination has not been evaluated and is rarely addressed in data-independent acquisition (DIA). How protein contaminants influence proteomic data is also unclear. In this study, we established new protein contaminant FASTA and spectral libraries that are applicable to all proteomic workflows and evaluated the impact of protein contaminants on both DDA and DIA proteomics. We demonstrated that including our contaminant libraries can reduce false discoveries and increase protein identifications, without influencing the quantification accuracy in various proteomic software platforms. With the pressing need to standardize proteomic workflow in the research community, we highly recommend including our contaminant FASTA and spectral libraries in all bottom-up proteomic data analysis. Our contaminant libraries and a step-by-step tutorial to incorporate these libraries in various DDA and DIA data analysis platforms can be valuable resources for proteomic researchers, freely accessible at <https://github.com/HaoGroup-ProtContLib>.

KEYWORDS: protein contaminant, contamination, spectral library, FASTA, DIA, DDA, DIA-NN, Spectronaut, keratin, trypsin



INTRODUCTION

Mass spectrometry (MS)-based proteomics is constantly challenged by exogenous contaminants and interferences that can be introduced into samples throughout the experimental workflow. Contaminations from polymers, detergents, solvents, ion sources, and other additives are often singly charged, which can be avoided by the careful selection of reagents or removed by ion mobility MS interface (e.g., FAIMS).^{1–3} However, contaminant proteins and peptides are almost impossible to eliminate from the experimental workflow. For example, keratins from researchers' skin and hair can be found on all surfaces and dust during sample handling.⁴ Rodent and sheep keratins can originate from animal facilities and wool clothing. Residue cell culture medium can lead to bovine protein contamination. Protein digestion enzymes (e.g., trypsin and Lys-C) and the production of enzymes can introduce protein contaminants into the bottom-up proteomic workflow.¹ Additionally, bovine serum albumin (BSA), immobilized antibodies, and affinity tags (e.g., streptavidin, FLAG, HA) from affinity columns/beads also represent major contaminants in immunoassays and affinity purification MS.^{5,6} These exogenous contaminant proteins/peptides can compete with real samples in the MS ion source, occupy the cycle times in the mass analyzer, reduce the number of useful peptide spectra, and hinder the detection of low abundant proteins from complex biological samples.

Sample-type-specific interferences have been evaluated previously and are important proteomics resources, such as nonspecific interactions in affinity purification and contamination from plasma proteomics.^{6,7} It is important to note that these interference proteins are specific to certain types of experiments and may actually be useful proteins in other types of proteomics studies. Therefore, these interference proteins cannot be marked as universal exogenous contaminant proteins for all proteomics experiments. Due to the negative effects of protein contaminants in MS proteomics, various methods have been implemented to combat this problem. Keratin contamination can be reduced using a laminar flow hood and fastidiously wiping down surfaces with ethanol and water.⁸ However, it is almost impossible to eliminate keratins from proteomic experiments. Contamination from proteolytic enzymes and affinity tags can be reduced by carefully optimizing the amount of enzymes and beads. Nevertheless, such practices may not be feasible for MS facilities and biological samples with limited amounts. For data-dependent

Received: March 9, 2022

acquisition (DDA) proteomics, an exclusion list can be used to disregard specific ions from being isolated for MS/MS fragmentation.^{9–12} However, the exclusion list is highly specific to liquid chromatography–MS (LC–MS) gradient and instrumentation, which is difficult to transfer across different MS platforms and laboratories. Peptides with similar m/z and retention times could also be accidentally excluded in complex biological samples. Contaminant peptides are not entirely useless and can be used as quality control to evaluate sample preparation reproducibility. Trypsin peptides can also be used to normalize retention time.¹³ To mark contaminant proteins from the data set, contaminant FASTA libraries can be used in various DDA software platforms.^{14–18} The most widely used contaminant FASTA files are from MaxQuant¹⁵ and cRAP (<https://www.thegpm.org/crap/>). However, these FASTA files have not been updated in years and contain many deleted/unassigned UniProt entries and human protein standards that are not contaminant proteins.

Despite various strategies to reduce the influence of protein contaminants in DDA proteomics, protein contamination has not been evaluated and is rarely addressed in data-independent acquisition (DIA) proteomics. Many exogenous contaminants from different species cannot be identified unless included in FASTA or spectral libraries. The DDA exclusion list is not compatible with DIA because all coeluting peptides within a predetermined isolation window are fragmented together regardless of precursor intensities in DIA. Due to the wide isolation window in DIA, we hypothesized that contaminant proteins/peptides could be especially problematic if left unaddressed, leading to false identifications in DIA proteomics.

DIA data analysis can be conducted using spectral library-based software tools (e.g., OpenSWATH,¹⁹ Spectronaut,²⁰ DIA-NN,²¹ Skyline,²² EncyclopeDIA,²³ MaxDIA²⁴) or library-free strategies with *in silico* digested pseudopeptide spectra based on FASTA protein sequences (e.g., DirectDIA,²⁵ DIA-NN,²¹ DIA-Umpire,²⁶ PECAN,^{27,28} DeepDIA²⁹). While contaminant FASTA libraries are widely implemented in DDA data analysis, they are rarely used for DIA data analysis.^{13,30} The PRIDE³¹ website provided a contaminant spectral library based on the commonly used cRAP list. However, the cRAP contaminant list has not been updated for 10 years and contains many noncontaminant human protein standards such as cathepsins, annexin, and myoglobin.

In this study, we created a series of contamination-only samples to establish the universal contaminant protein spectral and FASTA libraries that can be used in all bottom-up proteomics experiments. We then evaluated how protein contaminants and contaminant libraries influence identification and quantification in DDA and DIA proteomics. The benefits and applicability of these contaminant libraries were demonstrated in various DDA and DIA data analysis platforms. These contaminant FASTA and spectral libraries are freely accessible at <https://github.com/HaoGroup-ProtContLib> with a step-by-step user manual to promote standardized and reproducible proteomics data analysis and reporting pipeline in the broad proteomics community.^{32–34}

MATERIALS AND METHODS

Generation of Contaminant-Only Samples

We generated a series of contaminant-only samples by adding different proteolytic enzymes to the lysis buffer (1 M Urea in 50 mM Tris–HCl), commonly used beads coated with affinity

tags, and fetal bovine serum (FBS), which is commonly used for cell culture medium. The proteolytic enzymes used here include sequencing-grade trypsin (V5111), trypsin gold (V5280), trypsin/Lys-C (PRV5073), and Lys-C (VA1170) from Promega. The beads used here include Sero-Mag streptavidin magnetic beads (Cytivia), anti-Flag M2 affinity agarose beads (Sigma), and EZview Red anti-HA affinity agarose beads (Sigma). Clean ungloved hands were purposely rubbed together above these samples to increase keratin contamination.

Human Cell Culture and Mouse Brain Tissues

HEK293 cells were maintained in DMEM/F12 HEPES medium containing 10% FBS. Mouse brain samples were obtained from wild-type mice (C57/B6) under protocols approved by the George Washington University Institutional Animal Care and Use Committee. HEK cells and mouse brain samples were lysed in 8 M urea in 50 mM Tris–HCl buffer and sonicated for 15 min in an ice-cold water bath using a QSonica Q700 sonicator with alternating cycles of 1 min on and 30 s off. Protein lysates were clarified by 15 min of centrifugation at 12,000 rpm at 4 °C and stored at –80 °C. Total protein concentrations were determined using a detergent-compatible colorimetric protein assay (DCA, Bio-Rad).

Proteomics Sample Preparation

The routine bottom-up proteomics workflow was conducted for contaminant-only samples, HEK cells, and mouse brain lysates as described previously.^{35,36} Briefly, disulfide bonds were reduced using 5 mM Tris(2-carboxyethyl)phosphine (TCEP) for 30 min, 15 mM iodoacetamide for 30 min in dark, and 5 mM TCEP for 10 min on a ThermoMixer shaking at 1,200 rpm at 37 °C. Protein digestions were conducted using various enzymes (contaminant-only samples) and trypsin/Lys-C (HEK and mouse samples) for 18 h at 37 °C on the ThermoMixer and quenched with 10% trifluoroacetic acid until pH < 3. Peptides were then desalted on a Waters Oasis HLB plate using the manufacturer's protocol, dried down under SpeedVac, and stored at –30 °C.

LC–MS/MS Analyses for DDA and DIA Proteomics

Peptide samples were analyzed on a Dionex UltiMate 3000 RSLCnano system coupled with a Thermo Fisher Q-Exactive HF-X mass spectrometer. Mobile phase buffer A was 0.1% formic acid in water, and buffer B was 0.1% formic acid in acetonitrile. HEK cells and mouse brain samples were injected onto an Acclaim PepMAP C18 trap column (3 μm , 100 Å, 75 μm \times 2 cm) and further separated on an Easy-spray PepMAP C18 column (2 μm , 100 Å, 75 μm \times 75 cm) with a flow rate of 0.2 $\mu\text{L}/\text{min}$, an LC gradient of 210 min, and a column temperature of 55 °C. Contaminant-only samples were analyzed with a 15 cm PepMAP C18 column at a flow rate of 0.3 $\mu\text{L}/\text{min}$ with an LC gradient of 120 min. For DDA analysis, MS scanned from m/z 380 to 1,500 with a resolving power of 120 K (at m/z 200 FWHM), an automatic gain control (AGC) target of 1×10^6 , and a maximum injection time (maxIT) of 50 ms. Precursors were isolated at a window of m/z 1.4 and fragmented with a normalized collision energy (NCE) of 30%, a resolving power of 7.5 K for MS/MS, and a maxIT of 40 ms. For DIA analysis, MS scanned from m/z 400 to 1000 with a resolving power of 60 K, an AGC target of 1×10^6 , and a maxIT of 30 ms. The precursor isolation window was set to m/z 8.0 (staggered) with 75 sequential DIA MS/MS

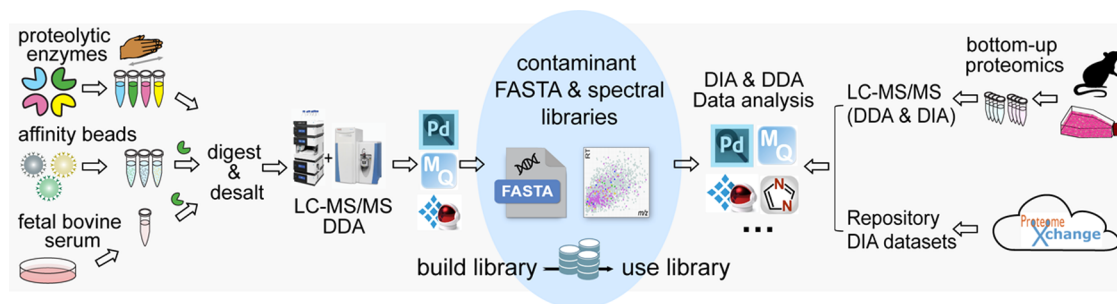


Figure 1. Schematic of building and using the contaminant libraries for DDA and DIA proteomics. A series of contaminant-only samples were created by adding different proteolytic enzymes to keratin-contaminated lysis buffer, commonly used beads coated with affinity tags, and fetal bovine serum (FBS) for cell culture medium. New contaminant FASTA and spectral libraries were created using DDA proteomic analyses of contaminant-only samples. These new contaminant libraries were evaluated using different biological samples and repository data sets in various DDA and DIA software platforms.

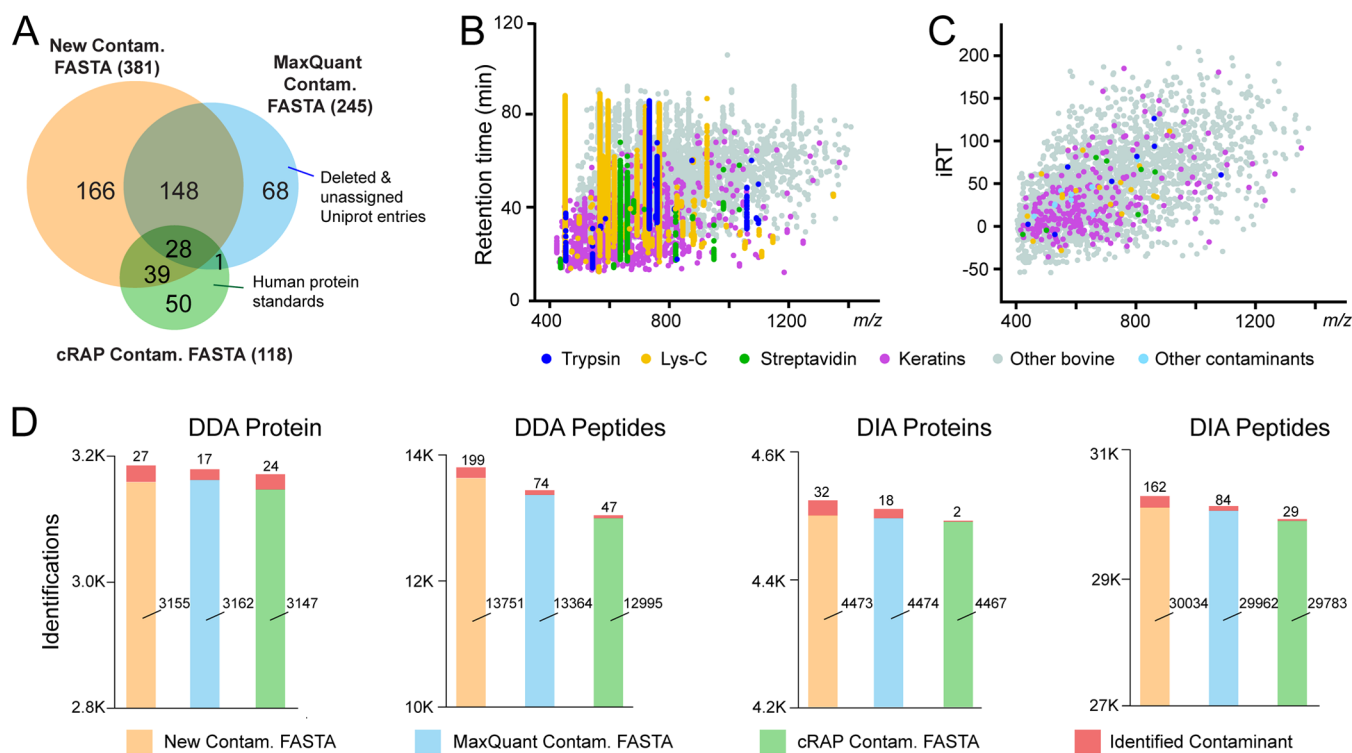


Figure 2. Characterization of the contaminant protein FASTA and spectral libraries. (A) Venn diagram comparison of contaminant protein lists from our newly generated contaminant FASTA and commonly used MaxQuant and cRAP contaminant FASTA files. (B) Scatterplot of identified contaminant peptides merged from contaminant-only samples in DDA LC-MS/MS analyses. (C) Scatterplot of contaminant peptides in our contaminant spectral libraries, generated by Spectronaut Pulsar. iRT stands for *in silico* normalized retention time. (D) Comparison of DDA and DIA protein and peptide identifications from HEK samples using our new contaminant FASTA in comparison to the MaxQuant and cRAP FASTA libraries.

scans between m/z 400 and 1000 at a resolving power of 30 K, an AGC target of 5×10^5 , a maxIT of 30 ms, and a NCE of 30%.

Repository Data from ProteomeXchange

Two repository data sets from the ProteomeXchange website were downloaded and reanalyzed using our contaminant libraries. Repository data set A is a HepG2 human cell DIA data set (PXD022589) containing 27 raw data.²⁴ Data set B is a fractionated mouse cortex DIA data set (PXD005573) containing 12 raw data.³⁷ Additionally, a fractionated HEK and HeLa cell DDA data set (PXD001468) was used to generate a spectral library for library-based DIA data analysis.³⁸

DDA Proteomics Data Analysis

All DDA proteomics data sets in this study were analyzed with both MaxQuant (2.0.2.0) and Thermo Fisher Proteome Discoverer (2.4.1.15) software programs. Contaminant-only samples were analyzed with the new contaminant FASTA library only. HEK cells and mouse brain samples were analyzed using the Swiss-Prot *Homo sapiens* database (reviewed) and *Mus musculus* database (reviewed), respectively, with and without our contaminant FASTA library. The false discovery rate (FDR) cutoff for protein and peptide spectral matches (PSMs) identifications was set at 0.01. Trypsin or Lys-C enzyme was used with a maximum missed cleavage of two. The precursor tolerance was set to 20 ppm. The fixed modification

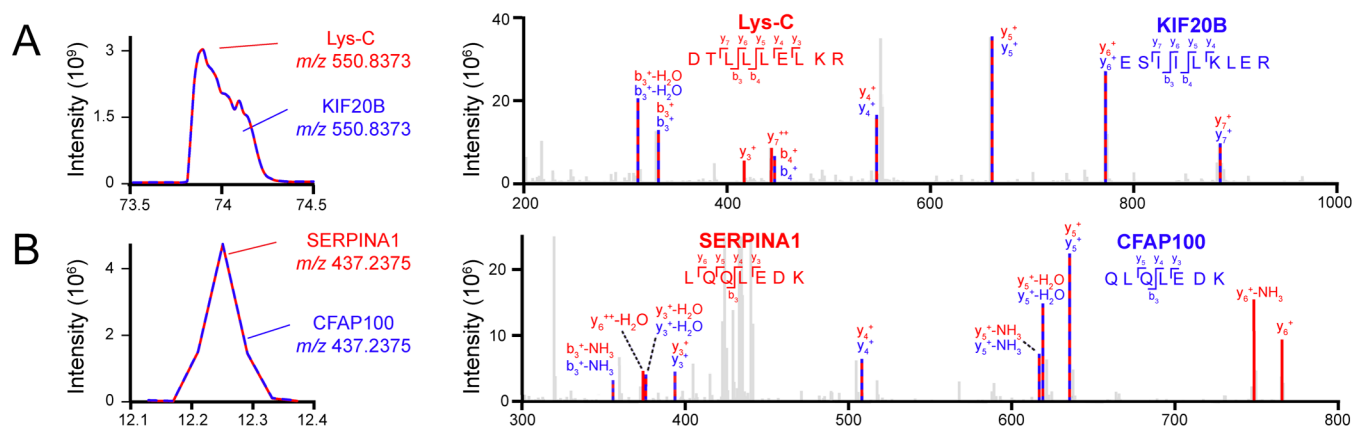


Figure 3. Examples of protein false identifications caused by contaminant peptides when the contaminant library is not used in DIA data analysis. Example contaminant peptide chromatograms and MS/MS fragments are shown in red, and real peptides of interest are shown in blue. (A) Lys-C (proteolytic enzyme contaminant) was misidentified as KIF20B. (B) SERPINA1 (bovine contaminant) was misidentified as CFAP100.

was cysteine carbamidomethyl, and variable modifications were methionine oxidation and protein N-terminus acetylation.

DIA Proteomics Data Analysis

Spectronaut Software. Several spectral libraries were generated using Pulsar in Spectronaut 15 with “BGS Factory settings”.²⁰ The contaminant spectral library was generated using the set of contaminant-only DDA data sets. Two spectral libraries were generated for each sample type (mouse brain and human cell) with and without including the contaminant-only samples (Supporting Table S2). Specific trypsin digestion was set with a maximum of two missed cleavages. A fixed carbamidomethyl modification of cysteine and up to three variable modifications for oxidation of methionine and acetylation of the protein N-terminus were allowed. PSM, peptide, and protein FDRs were set to 0.01. Both library-based and library-free (DirectDIA) analyses were performed in Spectronaut 15 using default settings. The quantification step was modified to perform an interference correction that used only identified peptides to train the machine-learning model. No cross-run normalization or imputation of missing values was used.

DIA-NN Software. DIA-NN (v1.8) was used for both spectral library-based and library-free DIA analyses.²¹ Raw data files were converted to the open-format.mzML using the msConvert feature of the ProteoWizard package.³⁹ Library-based analysis was conducted in DIA-NN using the spectral libraries established above in Spectronaut Pulsar. A fixed carbamidomethyl modification of cysteine and up to three variable modifications for oxidation of methionine and acetylation of the protein N-terminus were allowed. Protein interferences were removed based on gene ID. FDR (0.01) was controlled by manually filtering the protein and peptide q -values in the report file. For library-free analysis, the FASTA digest was selected. The spectral libraries were also included to train the deep learning model.

Data Filtering

To increase the confidence of protein/peptide identifications, proteins that were identified with only one precursor or an intensity below 10 were removed from all data sets using R. Contaminant proteins can be easily filtered out from the results by searching the “Cont_” prefix in the UniProt ID column from the result files. Contaminant proteins were removed

before calculating the coefficient of variation and Spearman’s correlation to evaluate proteomics quantification.

Data Availability

All raw files have been deposited to the ProteomeXchange Consortium with data identifier PXD031139. The protein contaminant library and step-by-step user tutorial are also freely accessible at <https://github.com/HaoGroup-ProtContLib>.

RESULTS AND DISCUSSION

Building New Contaminant Protein FASTA and Spectral Libraries

Most exogenous contaminant proteins originating from reagents and sample handling are commonly shared in all bottom-up proteomics experiments. Therefore, we aim to build universal contaminant protein libraries that can be used in all bottom-up proteomics (Figure 1). Although widely used for DDA proteomics, protein contaminant lists from MaxQuant and cRAP have not been updated for years, containing many deleted/unassigned UniProt IDs, sample-specific interference (noncontaminant) proteins, and commercially available human protein standards that are incorrectly listed as contaminant proteins. Therefore, we first built a new contaminant FASTA library by manually merging the available contaminant lists online, updating their UniProt entry IDs, deleting non-contaminant proteins, searching for new contaminant proteins on UniProt, and combining them into a new FASTA file. Our new contaminant FASTA library contains 381 contaminant proteins including all human keratin-related proteins, bovine contaminants from cell culture medium and affinity columns, various proteolytic enzymes, affinity tags, and other contaminants (Supporting FASTA and Table S1). When compared to the MaxQuant and cRAP contaminant lists, our new FASTA library contains additional 166 contaminant proteins (Figure 2A). This new FASTA library can be used for both DDA and DIA proteomics. We also added a “Cont_” prefix in each contaminant entry in the FASTA library, allowing contaminant proteins to be easily filtered and removed in the result files.

To establish comprehensive contaminant protein spectral libraries for DIA proteomics, we created a series of contaminant-only samples using various proteolytic enzymes, affinity purification beads, and fetal bovine serum (FBS) that are commonly used for cell culture medium. We validated the



Figure 4. Evaluation of protein/peptide identifications influenced by the protein contaminant libraries in DDA and DIA proteomics. HEK cells and mouse brain samples were analyzed by various DDA and DIA software platforms, with (blue) and without contaminant libraries (gray). Venn diagrams showed the identified proteins from various data sets overlapping with the contaminant lists in the FASTA library (red). Bar graphs showed the identified contaminants (red) and noncontaminant proteins/peptides with and without using contaminant libraries.

presence of each contaminant peptide by creating spectral libraries in MaxQuant, Proteome Discoverer, and Spectronaut Pulsar. Hundreds of contaminant peptides were detected throughout the LC–MS gradient (Figure 2B and Supporting Table S3). Since trypsin and Lys-C are the two most commonly used enzymes for bottom-up proteomics, we created two DIA spectral libraries using Spectronaut Pulsar: tryptic contaminant peptides and Lys-C-digested contaminant peptides. These spectral libraries are built from highly confident fragment ions assigned to each peptide sequence (Figure 2C and Supporting Table S4), also freely accessible on

ProteomeXchange (PXD031139). We compared our new FASTA library to the existing contaminant FASTA from MaxQuant and cRAP using DDA and DIA analyses of HEK samples. Improved protein/peptide identifications were achieved using the new library (Figure 2D). Further assessment of the contaminant proteins showed that fetal bovine serum proteins, human keratins, and the Lys-C enzyme produced the largest number of contaminant PSMs. Lys-C enzyme provides higher cleavage efficiency at lysine and is therefore often used in combination with trypsin to improve digestion efficiency.⁴⁰ However, Lys-C enzyme contains almost

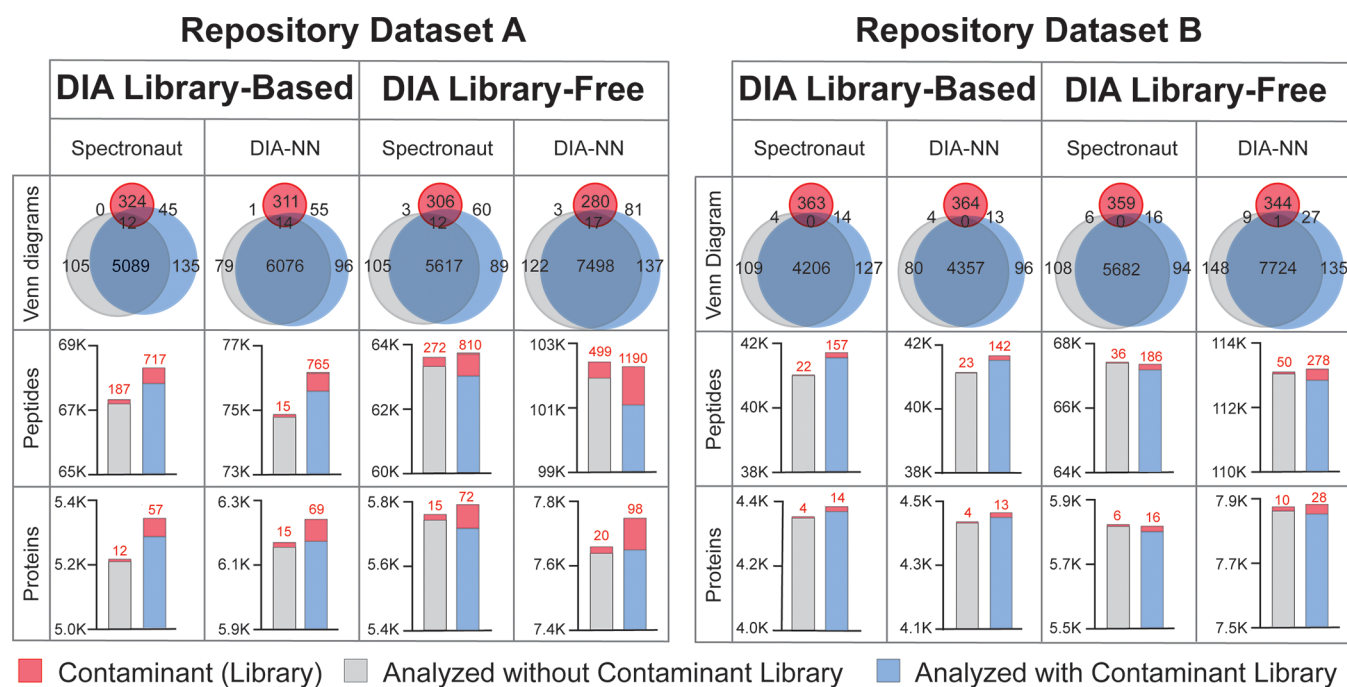


Figure 5. Repository DIA proteomics data sets reanalyzed with and without the contaminant protein libraries. Various DIA data analysis platforms were used to reanalyze two DIA data sets (human cells, PXD022589; mouse cortex, PXD005573) with (blue) and without contaminant libraries (gray). The contaminant FASTA library and identified contaminant proteins are marked in red in the Venn diagrams and bar graphs.

twofold more arginine/lysine residues compared to trypsin, leading to many contaminant peptides. Additionally, bovine protein contaminants (albumin, *etc.*) were identified in all affinity purification beads despite conducting prewashing steps. Streptavidin-coated beads generated overwhelming streptavidin peptide signals.⁵ These exogenous contaminant proteins originated from a different species will not be identified unless the contaminant FASTA library is in use. Although our libraries provided commonly observed contaminant proteins for most proteomics experiments, contaminant proteins could be sample-specific. For example, keratins may be biomarkers for skin and oral cancer.⁴¹ In this special case, keratins may be important proteins that should not be removed. Our new FASTA library marked these common contaminant proteins with “Cont_” in the UniProt ID, and we suggest that researchers examine these protein IDs before removing them from the results.

Contaminant Peptides Can Cause False Discoveries in DIA Proteomics

The contaminant FASTA library has been widely used for DDA proteomics but is rarely included in DIA data analysis.^{30,35,42,43} Since DIA uses a much wider precursor isolation window (4–15 Da) compared to DDA (0.4–2 Da), contaminant peptides in DIA are more likely to be coeluted and cofragmented with other peptides. If not addressed properly, contaminant peptides may cause false identifications of peptides/proteins. To evaluate the influence of contaminant peptides, we analyzed several DIA proteomics data sets with and without our contaminant FASTA library. As shown in Figure 3A, when the contaminant FASTA library is not included during data analysis, a contaminant Lys-C peptide was misidentified as a KIF20B peptide due to numerous shared peptide fragments. After including the contaminant library, the peak picking algorithm identified an additional y3 ion and y7⁺⁺ ion and assigned the fragmentation spectra to Lys-C instead of

KIF20B with higher confidence and lower peptide *q*-values. This misidentification occurs frequently when trypsin/Lys-C or Lys-C is used in multiple samples during library generation and data processing (Supporting Figure S1A). A similar scenario happened to bovine contaminant protein SERPINA1, which was misidentified as CFAP100 (Figure 3B). Including the contaminant library allows the identification of three additional fragments to correctly assign to the SERPINA1 contaminant peptide. We carefully examined the identification spectra in all data sets and found that these misidentifications do not happen on a large scale, yet still represent clear evidence of false discoveries caused by contaminant peptides when contaminant protein libraries are not in use. Furthermore, as contaminant peptides elute throughout the LC gradient and mass range (Figure 2B), many contaminant peptides can be coeluted and cofragmented with real peptides of interest (Supporting Figure S1B–D). Although coelution and cofragmentation are common in DIA proteomics, highly abundant contaminant peptides can suppress the detection of low abundant peptides by competing with them in an ion source and mass analyzer. In proteomics, a target-decoy strategy is commonly used to estimate the false discovery rate. Highly abundant contaminant peptides can generate high scores, potentially hindering the selection of low-score biologically meaningful proteins.⁴⁴ Therefore, carefully optimizing experimental workflow to reduce contaminant signals and integrating contaminant libraries into the data analysis pipeline should be combined together to improve proteomics data quality.

Including Contaminant Protein Library Improves Both DDA and DIA Proteomics

Contaminant libraries can be integrated into the DDA and DIA data analysis workflow via different strategies. DDA and library-free DIA analyses only require the contaminant FASTA protein sequences. Library-based DIA analysis requires both

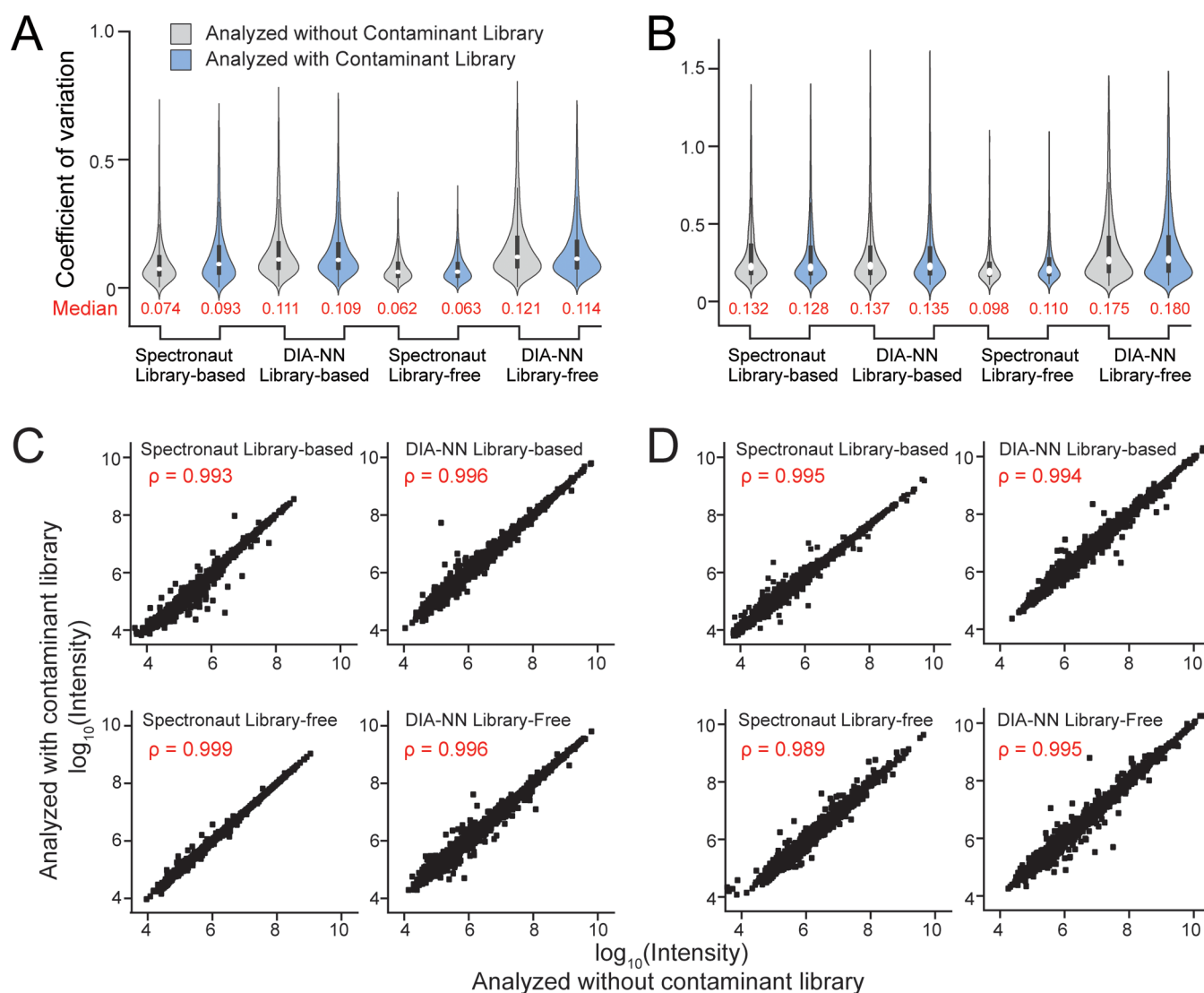


Figure 6. Protein quantification is not influenced by the protein contaminant libraries. Violin boxplots showing the coefficient of variance for protein quantification with (blue) and without (gray) the contaminant library in HEK cells (A) and mouse brain tissue (B) DIA proteomics data sets. Spearman's correlations of protein intensities were calculated with and without the contaminant libraries in HEK cells (C) and mouse brain tissue (D).

FASTA and spectral libraries. Contaminant spectral libraries can be generated in two ways: (1) an integrated spectral library built from contaminant-only raw data and custom proteomics data together and (2) two separate spectral libraries for contaminant and custom proteomics data. The contaminant FASTA file is also required when building these spectral libraries. In Spectronaut software, multiple spectral libraries can be included during data analysis. We found that the integrated spectral library performs similarly to two separate libraries with slightly higher total protein identifications in some data sets (Supporting Figure S2). Either method is better compared to the results analyzed without the contaminant library. However, many other DIA software platforms do not allow the inclusion of multiple spectral libraries and thus require an integrated spectral library. Including the additional contaminant FASTA and spectral libraries did not increase the software processing time for multiple DDA (Proteome Discoverer, MaxQuant) and DIA (DIA-NN, Spectronaut) platforms.

To demonstrate the benefits of contaminant protein libraries for both DDA and DIA proteomics, HEK cells and mouse brain samples were analyzed in DDA and DIA workflows in various data analysis software (Figure 4). After removing the contaminants, more peptides/proteins were identified when contaminant libraries were in use. The overall increases in protein and peptide identification were around 0.9 and 1.3%, respectively, across all software and sample types. The improvement in noncontaminant protein IDs is likely due to decreased false identifications and altered target/decoy ratios when including the contaminant libraries. For DDA data, including contaminant FASTA improved noncontaminant peptide identifications but protein IDs were not influenced. Benefited from the additional contaminant spectral library, library-based DIA platforms provided a greater increase of identifications compared to library-free platforms. This is likely due to the high quality and abundant contaminant peptide spectra from our contaminant-only samples. For various DIA platforms, library-free DIA-NN generated the highest number of protein and peptide IDs possibly due to the deep learning

model implemented in the search algorithm and interference correction algorithm. Besides in-house generated proteomics data, we also analyzed repository data sets with and without contaminant libraries. Two DIA repository data sets were downloaded from ProteomeXchange: repository data set A from HepG2 human cell samples²⁴ and data set B from mouse brain samples.³⁷ An increased number of proteins and peptides were identified when the data were analyzed with contaminant libraries (Figure 5). Particularly for repository data set A, more than 5% of additional proteins and peptides (noncontaminants) were identified when the contaminant library was used in the library-based Spectronaut platform. Many bovine contaminant proteins were identified from repository data set A, similar to our in-house generated HEK cell data set, which can be traced back to the FBS used for human cell culture. To minimize the contamination from cell culture media, we highly recommend quick washes with phosphate-buffered saline (PBS) 2–3 times during cell harvest.

Since our contaminant libraries can improve protein/peptide identifications, we further assessed protein quantification with and without contaminant libraries. Coefficient of variation (CV) values of all quantified proteins from HEK cells (Figure 6A) and mouse brain samples (Figure 6B) were calculated after removing the contaminant proteins. No significant differences were observed with and without including contaminant libraries. DIA-NN resulted in more protein identification but higher CVs compared to the Spectronaut platform. Library-based methods provided less variation and better reproducibility compared to library-free methods, consistent with other reported studies.^{23,45} Protein intensities were not exactly the same when data were analyzed with or without contaminant libraries, but they did correlate very well with Spearman's correlation close to 1 (Figure 6C,D). To rule out the possibilities that differences in protein identification and quantification may be caused by additional entries in the libraries, we performed a control analysis where 381 random proteins were removed from the human FASTA library (Supporting Figure S4). Including contaminant library always outperformed the method without contaminant library. No major differences in quantification were observed in this control analysis, demonstrating that including additional contaminant libraries do not influence protein quantification.

CONCLUSIONS

To sum up, we highly recommend using our contaminant libraries for both DDA and DIA proteomics data analyses. This study addressed a critical gap in bottom-up proteomics by establishing and evaluating contaminant protein libraries to reduce false discoveries and improve identifications in both DDA and DIA proteomics. Although the software programs used here (Spectronaut, DIA-NN, MaxQuant, Proteome Discoverer) are not an exhaustive list of all available data analysis platforms, we believe that our contaminant libraries can be universally applied to all bottom-up DIA and DDA proteomics software platforms. In fact, we provided a step-by-step tutorial on how to best incorporate our contaminant FASTA and Spectral libraries for many other software platforms such as Skyline,²² MaxDIA,²⁴ and PECAN²⁷ (Supporting Tutorial). Recognizing the different nature of samples used in various proteomic experiments, our ongoing efforts will continue updating and enriching our contaminant libraries to include sample type-specific contaminant libraries on our website (<https://github.com/HaoGroup->

ProtContLib). Currently available FASTA libraries include the universal contaminant FASTA evaluated in this study, as well as new FASTA libraries specifically for cell culture, mouse tissue, and rat tissue. These freely accessible contaminant FASTA and spectral libraries can be valuable resources for proteomic researchers and facilitate the standardization of proteomic data analysis across different laboratories.

ASSOCIATED CONTENT

Supporting Information

The Supporting Information is available free of charge at <https://pubs.acs.org/doi/10.1021/acs.jproteome.2c00145>.

Supplemental Figures: additional examples of misidentified and coeluting contaminant peptides when not using the contaminant library in DIA data analysis (Figure S1), evaluation of different methods to build contaminant spectral libraries (Figure S2), influence of protein contaminant libraries on identification and quantification in a controlled analysis to randomly remove 381 proteins from the human FASTA (Figure S3) (PDF) Step-by-step tutorial for using the contaminant libraries in various DDA and DIA proteomic software, such as Proteome Discoverer, MaxQuant, Spectronaut, DIA-NN, Skyline, PECAN, etc. (PDF)

Supporting Tables: contaminant protein information in the FASTA library and sources of contamination (Table S1), list of the established FASTA and Pulsar spectral libraries (Table S2), summary of the protein contaminants identified in contaminant-only samples (Table S3), and list of the contaminant peptides and fragments in Pulsar spectral libraries (Table S4). (XLSX)

Universal Contaminant Protein FASTA with Cont_prefix (TXT)

AUTHOR INFORMATION

Corresponding Author

Ling Hao – Department of Chemistry, The George Washington University, Washington, DC 20052, United States; orcid.org/0000-0002-0106-5266; Phone: +1 (202) 994-4492; Email: linghao@gwu.edu

Authors

Ashley M. Frankenfield – Department of Chemistry, The George Washington University, Washington, DC 20052, United States

Jiawei Ni – Department of Chemistry, The George Washington University, Washington, DC 20052, United States

Mustafa Ahmed – Department of Chemistry, The George Washington University, Washington, DC 20052, United States

Complete contact information is available at: <https://pubs.acs.org/doi/10.1021/acs.jproteome.2c00145>

Author Contributions

A.M.F. and L.H. designed the study and wrote the manuscript with inputs and revisions from all co-authors. A.M.F., J.N., and A.M. conducted the experiments. A.M.F. and J.N. performed data analysis. All authors have read and agreed to the published version of this manuscript.

Notes

The authors declare no competing financial interest.

ACKNOWLEDGMENTS

This study is supported by the NIH grant (R01NS121608). L.H. acknowledges the ORAU Ralph E. Powe Junior Faculty Enhancement Award. A.M.F. acknowledges the ARCS-Metro Washington Chapter Scholarship and the Bourbon F. Scribner Endowment Fellowship. The authors thank the Vertes lab and Lu Lab at GW for access to the SpeedVac equipment and mouse brain samples. The authors thank Tejas Gandhi and Oliver Bernhardt from the Biognosis Spectronaut team for providing valuable feedback on DIA data analysis.

REFERENCES

- (1) Keller, B. O.; Sui, J.; Young, A. B.; Whittal, R. M. Interferences and Contaminants Encountered in Modern Mass Spectrometry. *Anal. Chim. Acta* **2008**, *627*, 71–81.
- (2) Rardin, M. J. Rapid Assessment of Contaminants and Interferences in Mass Spectrometry Data Using Skyline. *J. Am. Soc. Mass Spectrom.* **2018**, *29*, 1327–1330.
- (3) Guevremont, R. High-Field Asymmetric Waveform Ion Mobility Spectrometry: A New Tool for Mass Spectrometry. *J. Chromatogr. A* **2004**, *1058*, 3–19.
- (4) Fox, K.; Castanha, E.; Fox, A.; Feigley, C.; Salzberg, D. Human K10 Epithelial Keratin Is the Most Abundant Protein in Airborne Dust of Both Occupied and Unoccupied School Rooms. *J. Environ. Monit.* **2008**, *10*, 55–59.
- (5) Frankenfield, A. M.; Fernandopulle, M. S.; Hasan, S.; Ward, M. E.; Hao, L. Development and Comparative Evaluation of Endolysosomal Proximity Labeling-Based Proteomic Methods in Human iPSC-Derived Neurons. *Anal. Chem.* **2020**, *92*, 15437–15444.
- (6) Mellacheruvu, D.; Wright, Z.; Couzens, A. L.; Lambert, J. P.; St-Denis, N. A.; Li, T.; Miteva, Y. V.; Hauri, S.; Sardi, M. E.; Low, T. Y.; Halim, V. A.; Bagshaw, R. D.; Hubner, N. C.; Al-Hakim, A.; Bouchard, A.; Faubert, D.; Fermin, D.; Dunham, W. H.; Goudreau, M.; Lin, Z. Y.; Badillo, B. G.; Pawson, T.; Durocher, D.; Coulombe, B.; Aebersold, R.; Superti-Furga, G.; Colinge, J.; Heck, A. J. R.; Choi, H.; Gstaiger, M.; Mohammed, S.; Cristea, I. M.; Bennett, K. L.; Washburn, M. P.; Raught, B.; Ewing, R. M.; Gingras, A. C.; Nesvizhskii, A. I. The CRAPome: A Contaminant Repository for Affinity Purification-Mass Spectrometry Data. *Nat. Methods* **2013**, *10*, 730–736.
- (7) Geyer, P. E.; Voytik, E.; Treit, P. V.; Doll, S.; Kleinhempel, A.; Niu, L.; Müller, J. B.; Buchholtz, M.; Bader, J. M.; Teupser, D.; Holdt, L. M.; Mann, M. Plasma Proteome Profiling to Detect and Avoid Sample-Related Biases in Biomarker Studies. *EMBO Mol. Med.* **2019**, *11*, No. e10427.
- (8) Biringer, R.; San Parkway, R. O. Protocol for a Keratin-Free Environment; Thermo Electron Corp.: San Jose, CA, 2002.
- (9) Schenk, S.; Schoenhals, G. J.; de Souza, G.; Mann, M. A High Confidence, Manually Validated Human Blood Plasma Protein Reference Set. *BMC Med. Genomics* **2008**, *1*, No. 41.
- (10) Hebert, A. S.; Thöing, C.; Riley, N. M.; Kwiczen, N. W.; Shiskova, E.; Huguët, R.; Cardasis, H. L.; Kuehn, A.; Eliuk, S.; Zabrouskov, V.; Westphal, M. S.; McAlister, G. C.; Coon, J. J. Improved Precursor Characterization for Data-Dependent Mass Spectrometry. *Anal. Chem.* **2018**, *90*, 2333–2340.
- (11) Hiemstra, T. F.; Charles, P. D.; Hester, S. S.; Karet, F. E.; Lilley, K. S. Uromodulin Exclusion List Improves Urinary Exosomal Protein Identification. *J. Biomol. Tech.* **2011**, *22*, 136–145.
- (12) Hodge, K.; Have, S.; Ten; Hutton, L.; Lamond, A. I. Cleaning up the Masses: Exclusion Lists to Reduce Contamination with HPLC-MS/MS. *J. Proteomics* **2013**, *88*, 92–103.
- (13) Parker, S. J.; Rost, H.; Rosenberger, G.; Collins, B. C.; Malmström, L.; Amodei, D.; Venkatraman, V.; Raedschelders, K.; Van Eyk, J. E.; Aebersold, R. Identification of a Set of Conserved Eukaryotic Internal Retention Time Standards for Data-independent Acquisition Mass Spectrometry. *Mol. Cell. Proteomics* **2015**, *14*, 2800–2813.
- (14) Houel, S.; Abernathy, R.; Renganathan, K.; Meyer-Arendt, K.; Ahn, N. G.; Old, W. M. Quantifying the Impact of Chimera MS/MS Spectra on Peptide Identification in Large-Scale Proteomics Studies. *J. Proteome Res.* **2010**, *9*, 4152–4160.
- (15) Tyanova, S.; Temu, T.; Cox, J. The MaxQuant Computational Platform for Mass Spectrometry-Based Shotgun Proteomics. *Nat. Protoc.* **2016**, *11*, 2301–2319.
- (16) Kong, A. T.; Leprevost, F. V.; Avtonomov, D. M.; Mellacheruvu, D.; Nesvizhskii, A. I. MSFragger: Ultrafast and Comprehensive Peptide Identification in Mass Spectrometry-Based Proteomics. *Nat. Methods* **2017**, *14*, 513–520.
- (17) da Veiga Leprevost, F.; Haynes, S. E.; Avtonomov, D. M.; Chang, H. Y.; Shanmugam, A. K.; Mellacheruvu, D.; Kong, A. T.; Nesvizhskii, A. I. Philosopher: A Versatile Toolkit for Shotgun Proteomics Data Analysis. *Nat. Methods* **2020**, *17*, 869–870.
- (18) Solntsev, S. K.; Shortreed, M. R.; Frey, B. L.; Smith, L. M. Enhanced Global Post-Translational Modification Discovery with MetaMorpheus. *J. Proteome Res.* **2018**, *17*, 1844–1851.
- (19) Röst, H. L.; Rosenberger, G.; Navarro, P.; Gillet, L.; Miladinović, S. M.; Schubert, O. T.; Wolski, W.; Collins, B. C.; Malmström, J.; Malmström, L.; Aebersold, R. OpenSWATH Enables Automated, Targeted Analysis of Data-Independent Acquisition MS Data. *Nat. Biotechnol.* **2014**, *32*, 219–223.
- (20) Bruderer, R.; Bernhardt, O. M.; Gandhi, T.; Miladinović, S. M.; Cheng, L. Y.; Messner, S.; Ehrenberger, T.; Zanotelli, V.; Butscheid, Y.; Escher, C.; Vitek, O.; Rinner, O.; Reiter, L. Extending the Limits of Quantitative Proteome Profiling with Data-Independent Acquisition and Application to Acetaminophen-Treated Three-Dimensional Liver Microtissues. *Mol. Cell. Proteomics* **2015**, *14*, 1400–1410.
- (21) Demichev, V.; Messner, C. B.; Vernardis, S. I.; Lilley, K. S.; Ralser, M. DIA-NN: Neural Networks and Interference Correction Enable Deep Proteome Coverage in High Throughput. *Nat. Methods* **2020**, *17*, 41–44.
- (22) Egertson, J. D.; MacLean, B.; Johnson, R.; Xuan, Y.; MacCoss, M. J. Multiplexed Peptide Analysis Using Data-Independent Acquisition and Skyline. *Nat. Protoc.* **2015**, *10*, 887–903.
- (23) Searle, B. C.; Pino, L. K.; Egertson, J. D.; Ting, Y. S.; Lawrence, R. T.; MacLean, B. X.; Villén, J.; MacCoss, M. J. Chromatogram Libraries Improve Peptide Detection and Quantification by Data Independent Acquisition Mass Spectrometry. *Nat. Commun.* **2018**, *9*, No. 5128.
- (24) Sinitcyn, P.; Hamzeiy, H.; Soto, F. S.; Itzhak, D.; McCarthy, F.; Wichmann, C.; Steger, M.; Ohmayer, U.; Distler, U.; Kaspar-Schoenefeld, S.; Prianichnikov, N.; Yilmaz, Ş.; Rudolph, J. D.; Tenzer, S.; Perez-Riverol, Y.; Nagaraj, N.; Humphrey, S. J.; Cox, J. MaxDIA Enables Library-Based and Library-Free Data-Independent Acquisition Proteomics. *Nat. Biotechnol.* **2021**, *39*, 1563–1573.
- (25) Muntel, J.; Kirkpatrick, J.; Bruderer, R.; Huang, T.; Vitek, O.; Ori, A.; Reiter, L. Comparison of Protein Quantification in a Complex Background by DIA and TMT Workflows with Fixed Instrument Time. *J. Proteome Res.* **2019**, *18*, 1340–1351.
- (26) Tsou, C. C.; Avtonomov, D.; Larsen, B.; Tucholska, M.; Choi, H.; Gingras, A. C.; Nesvizhskii, A. I. DIA-Umpire: Comprehensive Computational Framework for Data-Independent Acquisition Proteomics. *Nat. Methods* **2015**, *12*, 258–264.
- (27) Ting, Y. S.; Egertson, J. D.; Bollinger, J. G.; Searle, B. C.; Payne, S. H.; Noble, W. S.; MacCoss, M. J. PECAN: Library-Free Peptide Detection for Data-Independent Acquisition Tandem Mass Spectrometry Data. *Nat. Methods* **2017**, *14*, 903–908.
- (28) Pino, L. K.; Just, S. C.; MacCoss, M. J.; Searle, B. C. Acquiring and Analyzing Data Independent Acquisition Proteomics Experiments without Spectrum Libraries. *Mol. Cell. Proteomics* **2020**, *19*, 1088–1103.
- (29) Yang, Y.; Liu, X.; Shen, C.; Lin, Y.; Yang, P.; Qiao, L. In Silico Spectral Libraries by Deep Learning Facilitate Data-Independent Acquisition Proteomics. *Nat. Commun.* **2020**, *11*, 1–11.
- (30) Mosen, P.; Sanner, A.; Singh, J.; Winter, D. Targeted Quantification of the Lysosomal Proteome in Complex Samples. *Proteomes* **2021**, *9*, No. 4.

(31) Griss, J.; Foster, J. M.; Hermjakob, H.; Vizcaíno, J. A. PRIDE Cluster: Building a Consensus of Proteomics Data. *Nat. Methods* **2013**, *10*, 95–96.

(32) Taylor, C. F.; Paton, N. W.; Lilley, K. S.; Binz, P.-A.; Julian, R. K.; Jones, A. R.; Zhu, W.; Apweiler, R.; Aebersold, R.; Deutsch, E. W.; Dunn, M. J.; Heck, A. J. R.; Leitner, A.; Macht, M.; Mann, M.; Martens, L.; Neubert, T. A.; Patterson, S. D.; Ping, P.; Seymour, S. L.; Souda, P.; Tsugita, A.; Vandekerckhove, J.; Vondriska, T. M.; Whitelegge, J. P.; Wilkins, M. R.; Xenarios, I.; Yates, J. R.; Hermjakob, H. The Minimum Information about a Proteomics Experiment (MIAPE). *Nat. Biotechnol.* **2007**, *25*, 887–893.

(33) Neely, B.; Kirkpatrick, J.; Midha, M.; Stemmer, P.; Martin, L.; Wang, Y.; Herring, L.; Phinney, B.; Shan, B.; Chien, A. Data Independent Acquisition in Practice: Foundations and Resources for Implementing DIA. *J. Biomol. Tech. JBT* **2019**, *30*, No. S46.

(34) Poulos, R. C.; Hains, P. G.; Shah, R.; Lucas, N.; Xavier, D.; Manda, S. S.; Anees, A.; Koh, J.; Mahboob, S.; Wittman, M.; et al. Strategies to Enable Large-Scale Proteomics for Reproducible Research. *Nat. Commun.* **2020**, *11*, No. 3793.

(35) Li, H.; Uittenbogaard, M.; Navarro, R.; Ahmed, M.; Gropman, A.; Chiaromello, A.; Hao, L. Integrated Proteomic and Metabolomic Analyses of the Mitochondrial Neurodegenerative Disease MELAS. *Mol. Omics* **2022**, *18*, 196–205.

(36) Wani, A.; Zhu, J.; Ulrich, J. D.; Eteleeb, A.; Sauerbeck, A. D.; Reitz, S. J.; Arhzaouy, K.; Ikenaga, C.; Yuede, C. M.; Pittman, S. K.; Wang, F.; Li, S.; Benitez, B. A.; Cruchaga, C.; Kummer, T. T.; Harari, O.; Chou, T. F.; Schröder, R.; Clemen, C. S.; Weihl, C. C. Neuronal VCP Loss of Function Recapitulates FTL-DTP Pathology. *Cell Rep.* **2021**, *36*, No. 109399.

(37) Bruderer, R.; Bernhardt, O. M.; Gandhi, T.; Xuan, Y.; Sondermann, J.; Schmidt, M.; Gomez-Varela, D.; Reiter, L. Optimization of Experimental Parameters in Data-Independent Mass Spectrometry Significantly Increases Depth and Reproducibility of Results. *Mol. Cell. Proteomics* **2017**, *16*, 2296–2309.

(38) Chick, J. M.; Kolippakkam, D.; Nusinow, D. P.; Zhai, B.; Rad, R.; Huttlin, E. L.; Gygi, S. P. An Ultra-Tolerant Database Search Reveals That a Myriad of Modified Peptides Contributes to Unassigned Spectra in Shotgun Proteomics HHS Public Access Author Manuscript. *Nat. Biotechnol.* **2015**, *33*, 743–749.

(39) Chambers, M. C.; MacLean, B.; Burke, R.; Amodei, D.; Ruderman, D. L.; Neumann, S.; Gatto, L.; Fischer, B.; Pratt, B.; Egerton, J.; Hoff, K.; Kessner, D.; Tasman, N.; Shulman, N.; Frewen, B.; Baker, T. A.; Brusniak, M. Y.; Paulse, C.; Creasy, D.; Flashner, L.; Kani, K.; Moulding, C.; Seymour, S. L.; Nuwaysir, L. M.; Lefebvre, B.; Kuhlmann, F.; Roark, J.; Rainer, P.; Detlev, S.; Hemenway, T.; Huhmer, A.; Langridge, J.; Connolly, B.; Chadick, T.; Holly, K.; Eckels, J.; Deutsch, E. W.; Moritz, R. L.; Katz, J. E.; Agus, D. B.; MacCoss, M.; Tabb, D. L.; Mallick, P. A Cross-Platform Toolkit for Mass Spectrometry and Proteomics. *Nat. Biotechnol.* **2012**, *30*, 918–920.

(40) Saveliev, S.; Bratz, M.; Zubarev, R.; Szapacs, M.; Budamgunta, H.; Uhr, M. Trypsin/Lys-C Protease Mix for Enhanced Protein Mass Spectrometry Analysis. *Nat. Methods* **2013**, *10*, i–ii.

(41) Vaidya, M.; Dmello, C.; Mogre, S. Utility of Keratins as Biomarkers for Human Oral Precancer and Cancer. *Life* **2022**, *12*, No. 343.

(42) Ghesquière, B.; Helsens, K.; Vandekerckhove, J.; Gevaert, K. A Stringent Approach to Improve the Quality of Nitrotyrosine Peptide Identifications. *Proteomics* **2011**, *11*, 1094–1098.

(43) Wang, J.; Bournes, P. E.; Bandeiras, N. Peptide Identification by Database Search of Mixture Tandem Mass Spectra. *Mol. Cell. Proteomics* **2011**, *10*, No. M111.010017.

(44) Elias, J. E.; Gygi, S. P. Target-Decoy Search Strategy for Increased Confidence in Large-Scale Protein Identifications by Mass Spectrometry. *Nat. Methods* **2007**, *4*, 207–214.

(45) Fernández-Costa, C.; Martínez-Bartolomé, S.; McClatchy, D. B.; Saviola, A. J.; Yu, N. K.; Yates, J. R. Impact of the Identification Strategy on the Reproducibility of the DDA and DIA Results. *J. Proteome Res.* **2020**, *19*, 3153–3161.