

Surface Design

DR2007 3AU

Surface Design - developing creative visual ideas that can be translated into printed designs or surface treatments for a wide range of surfaces.

BA (Hons) Surface Design

Course Links

Undergraduate qualifications explained
Fees, Funding & Money
International applications
Student Services
Housing Services
Open Days and Tours

[At a Glance](#) [Content](#) [Structure](#) [Career Prospects](#) [Entry Requirements](#) [Apply](#)

Course Code	
UCAS Code	W204
University Code	UAL U65
Study Level	Undergraduate
Study Mode	Full Time
Course Length	3 Years
Start Date	September
Application Route	Through UCAS .
Application Deadline	15 January 2010
Home/EU Fee	£3,290. Fees given as guidance only and will be subject to review. Some courses charge non-standard rates and additional material/residency costs.
International Fee	£12,250. Fees given as guidance only and will be subject to review. Many courses charge non-standard fee rates and additional costs. For details call the International Office on +44 (0)20 7514 8138.
Course Director	Ian Willmott
Course Location	LCC - this course is taught within the Faculty of Design
Autumn Term Dates	27 September - 10 December 2010
Spring Term Dates	10 January - 1 April 2011
Summer Term Dates	3 May - 24 June 2011



Visual

[Showtime gallery](#)
[Course gallery](#)

Profiles

[Student: Ulrika Bygge](#)
[Student: Louise Sheeran](#)
[Student: Rachel Moore](#)
[Student: Sophie Goodenough at BA Surface Design show \(VIDEO\)](#)
[Student: Alexandra Crowley at BA Surface Design show \(VIDEO\)](#)

Downloads

[Course leaflet \(PDF 85KB\)](#)

[Home](#) / [Academics](#) / [Undergraduate Programs](#) / [Textile/Surface Design](#)

Textile/Surface Design

[HOW TO APPLY](#)

Program

- [The Liberal Arts](#)
- [Beyond Graduation](#)
- [Faculty](#)
- [Eligibility](#)
- [Portfolio Requirements](#)

RELATED LINKS

- [Curriculum](#)
- [Course Descriptions](#)
- [Department Homepage](#)

[School of Art & Design](#)

CONTACT

Building B, Room 521
[Karen Gentile](#), chair
212 217.5140



It's what's on top that counts.

Textile/surface design is the art of changing the appearance of natural and synthetic surfaces by the application of traditional, stylized, digitized, and illusionary techniques to embellish a product. It's also the art of enhancing a surface's structure by applying three-dimensional techniques, such as weaving, knitting, embroidery, lace, devoré, beading, and embossing.

In courses taught by practicing professionals, you'll acquire a wide range of skills applicable to a variety of areas, from apparel and home furnishings to greeting cards and tabletop, so you'll have many career options. For inspiration, you'll be immersed in the designs and creative traditions of countries around the world and cultures throughout history. Courses blend theory with hands-on practice in such traditional media as painting, drawing, and screen printing as well as digital methods.

In this program, you'll combine artistic ability, technical skills, and creative innovation, as you learn how to take a design from conception to product. When you graduate, you'll join a growing network of successful alumni, who connect you to the industry and to job opportunities in the many aspects of this global field.

FACULTY

Dennis Lee,
Textile/Surface
Design & Fabric
Styling
Re-Examining History



Figures in dress of different periods cavort and lounge in idealized settings, painting "a romantic memoir" rather than an exact historical reproduction.

[Read more](#)

Gallery



In the Classroom
Student Work

Amie Y. Cheong
Textile/Surface
Design





Our courses

Undergraduate prospectus 2009/10

[You are here: Uni home page](#) » [Undergraduate 2009/10 courses](#)

Surface Design for Fashion and Interiors BA(Hons)

School

[School of Art, Design and Architecture](#)

Available at

Huddersfield

UCAS Code

Route A: W740 BA/SDFI

Route B: E740 BA/SDFI

Course Length

3 years full-time

4 years sandwich

Number of Places

20

Introduction

On this course you will explore creativity and innovation through a personal learning journey in a friendly, supportive environment to discover and realise your aspirations.

Studios, workshops, tutorials and lectures will offer a broad range of practical and intellectual activities focused on projects ranging from conceptual to commercial in nature, and aimed at residential, contract, urban, garden, entertainment and architectural settings. You will explore traditional materials as diverse as paper, fabrics, glass, ceramics, plastics and smart materials and new technologies.

Industry sponsored and collaborative projects will inform your understanding of the context and interdependence of creativity, professional practice, socio-cultural/business/commercial awareness, materials and techniques knowledge in developing your own surface design persona.

After year two there is an optional salaried placement year.

Your final year will give you the opportunity to produce a personally defined innovative portfolio which will be your showcase to start your career.

State-of-the-art facilities in digital printing, laser cutting, CAD embroidery and embellishment workshops support your learning.

Showcase

BA Honours Surface Design



Luke Embden
Chair



Naori Priestly
lamps



Gavin Horton
Pot



Nadia Sparham
cushions 4

Showcase

BA Honours Surface Design



Anais Kanakubo
Graduate Show work



Helena Pielak
Graduate Show work



Janet Norman
Graduate Show work

Surface Design – Methodology

MATERIALS



EXPERIMENTATION



APPLICATIONS



EXECUTION

Fabrics
Plastics
Wood
Glass

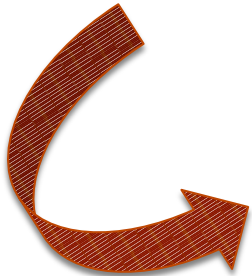
Techniques
• Prints
• Surface manipulations

Accessories
Fashion
Interior Design/
Architecture
Products



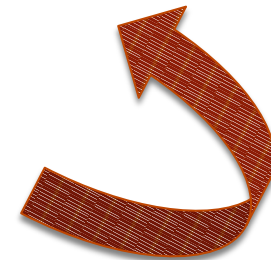
MATERIALS :

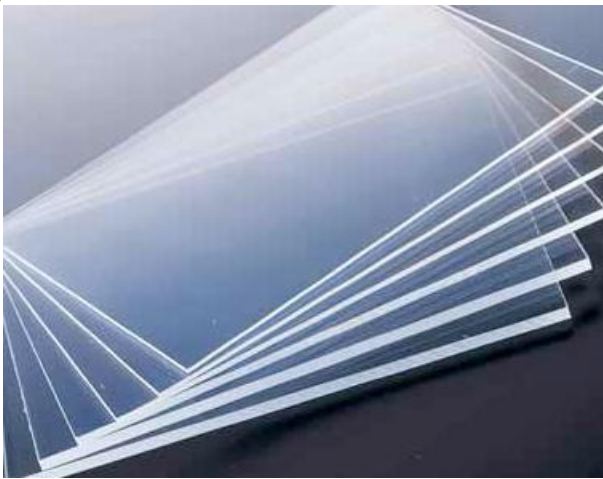
Fabrics



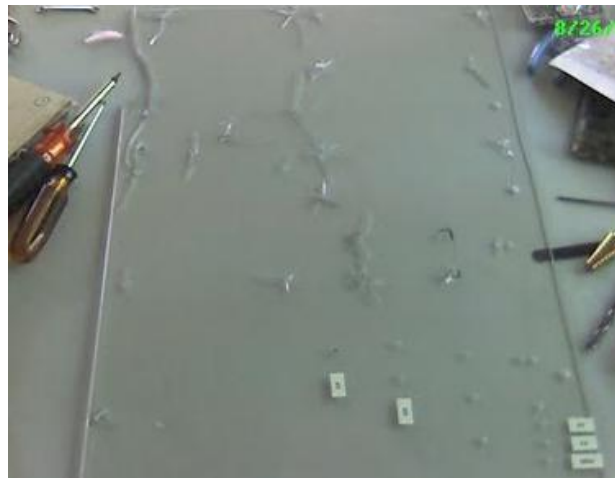
EXPERIMENTATION
EXECUTION

APPLICATIONS





MATERIALS : Acrylics



EXPERIMENTATION , EXECUTION



APPLICATIONS



MATERIALS : Papers



EXPERIMENTATION , EXECUTION



APPLICATIONS

The global resource for innovative materials.

Every Idea Has A Material Solution™

<http://www.materialconnexion.com/>

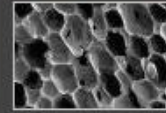
http://www.core77.com/blog/exhibitions/material_connexion_thai_materials_exhibition_photos_new_york_20074.asp





SOFTWALL LED

SOFTWALL + SOFTBLOCK IS A MODULAR, SPACE-SHAPING SYSTEM OF EXPANDABLE/COMPRESSIBLE HONEYCOMB SEATING,....



Softwall LED

FEATURE, LIGHT — JULY 30, 2010 AT 9:00 AM

Softwall + Softblock is a modular, space-shaping system of expandable/compressible honeycomb seating, partitions, and lighting conceived from the desire for flexible, spontaneous spacemaking. Opening a Softwall + Softblock element is a captivating tactile experience, as the honeycomb unfolds to create a completely freestanding structure that is hundreds of times larger than its compressed form. Softwall + Softblock...

[read more](#)

<http://transmaterial.net/>

SURFACE DESIGN SHOW

BUSINESS DESIGN CENTRE
LONDON — 15-17 FEB 2011

WELCOME

VISITING

EXHIBITING

SPONSORSHIP

PARTNERS

FEATURES

MEDIA

WELCOME

Surface Design Show is the only UK event to focus exclusively on interior and exterior surface solutions in building design

[FIND OUT MORE](#)



REGISTER TODAY

EXHIBITOR LIST

BOOK A STAND

SIGN UP TO OUR COMMUNITY

JOIN US



Search this site



LATEST NEWS

New materials pavillions to feature at the Surface Design Show - Brand new for 2011 will be the 'materials pavillions' showcasing the latest in timber, glass and concrete. Watch this space - further details to follow.

PRODUCT OF THE MONTH

Healthy pavings start here!

Water is one of the worst enemies of outdoor pavings, capable of eating away even the strongest, toughest materials. **Fila HP98** is the special water-based waterproofing treatment for protecting outdoor surfaces in unpolished natural stone and terracotta. **Discover more.**



SHOW FEATURES



PREVIEW GALA EVENINGS

Our hugely popular preview and gala evenings return...with a twist! Rejuvenated for 2011 the VIP evenings will feature world class speakers, debate and networking opportunities in an exclusive environment.



INSPIRATION CENTRE

Exactly what it says on the tin! Returning for 2011 and specifically for smaller companies who are new to the show, the Inspiration centre will showcase innovative and inspiring products that are new to the market.



SEMINARS

Featuring RIBA CPD, BRE Green Guide Theatre and RIBA London Portraits. Informative, topical and invaluable insights into the future of building design.

IN ASSOCIATION WITH

AIS

ASSOCIATION OF
INTERIOR SPECIALISTS

Online Resources

<http://www surfacedesignshow.com/>

JOIN EMMA'S BITS & BOBS
MAILING LIST HERE

Window films
Window film samples
Window film QA
Sales Information

Bespoke - THE STUDIO Surface Material Design

Emma Jeffs' studio Surface Material Design has been established for ten years. It has undertaken a variety of commercial and private commissions and continues to expand its portfolio of interests.

Projects have included window furnishings such as blinds, window films and screens and collaborations with manufacturers and retail.

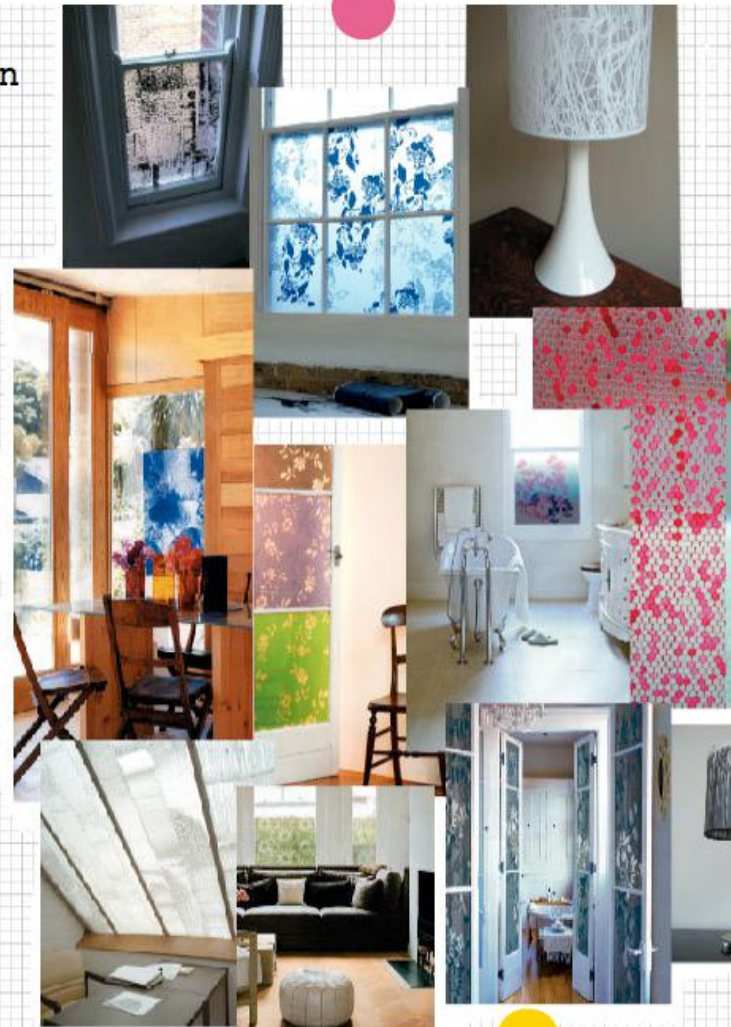
Materials and designs have also been produced for lighting, wall coverings, fabric, splash backs and doors. We have worked on commissions for kitchens, bathrooms, bedrooms, set design, retail store design, restaurants and hotels.

When taking on a project we consider and investigate the material application, function and environment combined with colour, pattern and scale.

We offer design to production. Supplying the initial surface pattern design and the final piece. We have strong business partnerships with a variety of UK companies that can create prints onto fabric, wallpaper, glass, plastic, wood and vinyl.

If you would like something truly unique or customized, whether it is for your own home or a commercial project please do get in touch. We love to undertake something that is a bit special.

info@emmajeffs.co.uk



ABOUT EMMA
BLOG
BESPOKE
TRADE
PRESS
CONTACT US
PRIVACY POLICY

[Home](#) [Studio Profile](#) [Product Information](#) [Wallpaper](#) [Stickers](#) [Let's Go Fresco!](#) [Order Products](#) [Samples](#)

ORDER NEW SHOES SAMPLES >

New Shoes sample pack will contain:

- 1 sample of each new shoes wallpaper colour way.
- 2 transfer samples
(1 applied to paper and 1 for you to try).
- 1 pattern sticker (unspecified).
- 1 limited edition folder with instruction details enclosed.

Cost £8 + postage

The price of sample pack will be deducted (£8) from subsequent wallpaper order.



<http://www.interactivewallpaper.co.uk/>

Assessment Outcomes

- ❑ Surface Design Magazine/Journal
 - ❑ PRACTICAL SESSIONS RECORDS
 - ❑ COMPANY VISITS

- ❑ Final Project

Class Demos – what to record

- What is the technique
- What are the relevant materials needed for the technique
- How to achieve the technique
- What are the uses and applications of the technique
- Photos
- Own personal reflections

It's Exercise Time

Surface Design

Types of Material & Methods

Polyester organza, water-soluble lining and other thermoplastics exhibit strong behavior and reaction to heat. Hence, heatsetting could be applied to achieve different effect.

Fabrics, be it natural or synthetic are good for creating consistent patterns and textures.

Silk & Wool are 'animal' fiber while linen and cotton are plant fiber. Cellulose is the keyword.

Polyester and Polyamide (nylon) are synthetics.

Transprint inks for transfer printing work best on 100% polyester.

Devore, which means 'take away' works on combination fibers. e.g. silk viscose velvet and silk viscose satin. Chemical will dissolve the viscose, leaving the silk behind.

IT IS ALL ABOUT DOING IT YOURSELF.

Hands On

THE EXERCISE



Professor Karen Hong giving us a thorough walkthrough on transfers before we went on to Devore technique.

Heat control is the key in achieving the desired effect. Several pieces have to be tried and tested before the final one is being transferred.

Special effects could be achieved with fabrics or random materials slot in the middle of the transfer paper.

Final Project – Wk 8 to 13

Inspiration/
Moodboard



EXPERIMENTATION
on selected materials



APPLICATION
Application board



EXECUTION

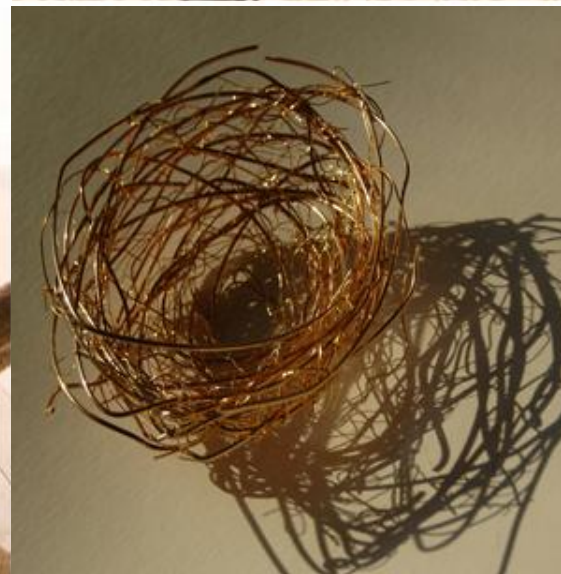
Materials board
4 to 5 actual material
swatches

Rendering of
material onto an
environment by
photoshop

&

Production of
actual material
onto a small
prototype

Nest Collection

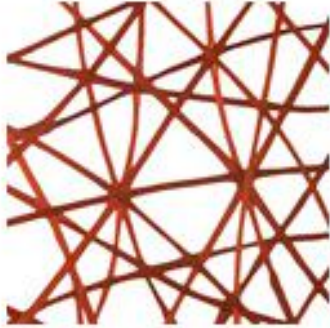


Inspiration / Mood board

Nest Collection



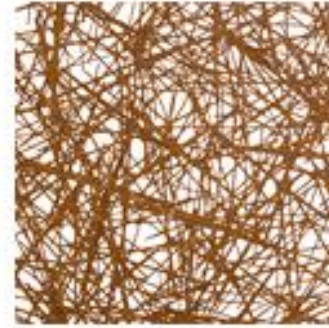
connection ink



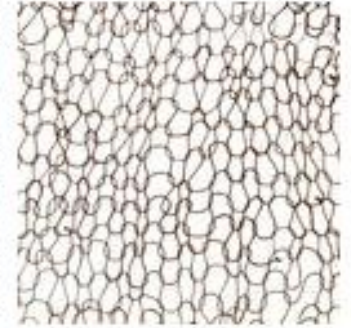
connection passion



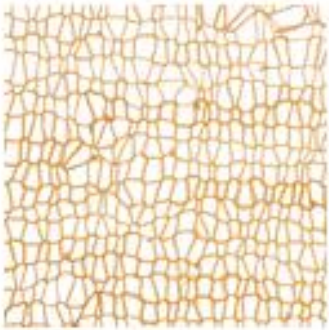
connection repose



criss cross nest



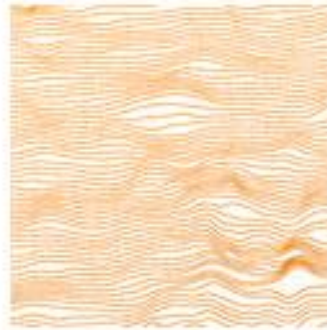
lasso coal



lattice buff



migration henna



migration saffron



sonoma nest



thicket natural



thicket raven



unravel black



unravel white

Materials board



Application board



LA FLEURS



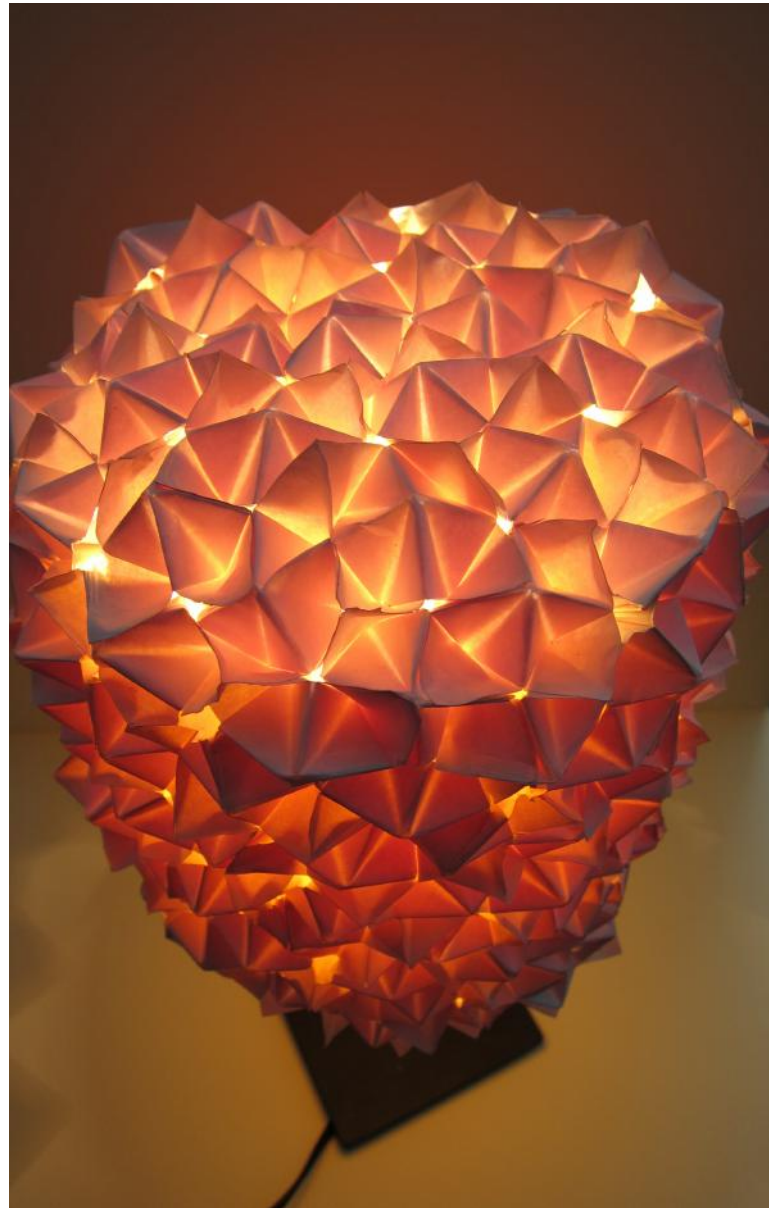
La fleurs, is a series of wall installation inspired by the some of the most unique and appealing shapes floras. These flowers namely the datura stramonium, the enigmatic and the casablanca lily are chosen for they share a common characteristic of unique curvy-shape petals surrounding its centroid. The natural but eye-appealing fetures of these flowers are then remodeled into an abtract yet symmetrical shape to add a modern feeling on the work. With an adequate level of additional light installed behind or in front of the wall, the final artwork casts a soothing yet highly modernistic ambience.



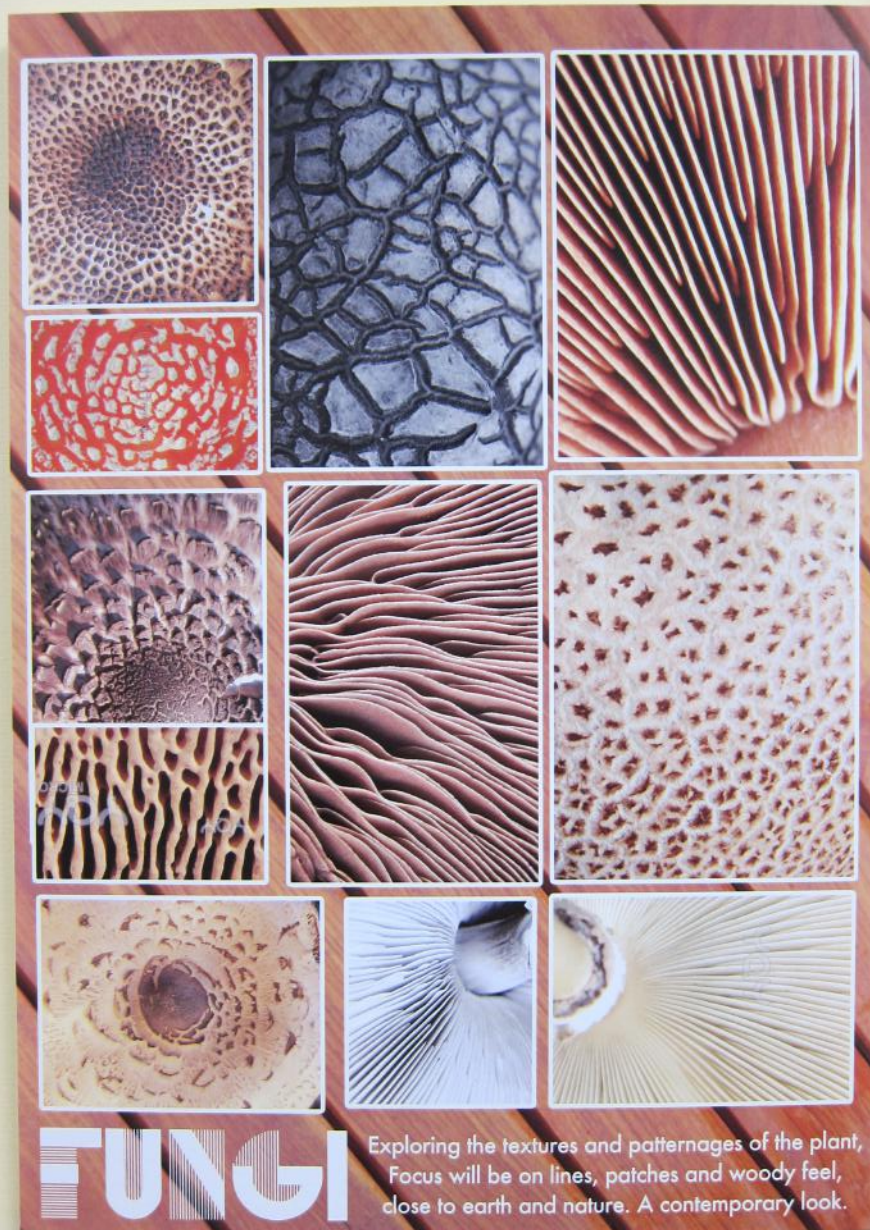
Inspiration / Mood board



Materials board



Application



SAMPLES AND APPLICATIONS

SAMPLE ONE



decorative wall panels



SAMPLE TWO



decorative cabinet laminates



SAMPLE THREE



wall partition

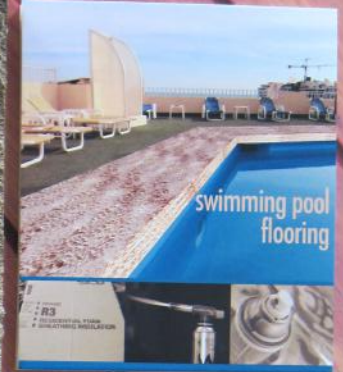


SAMPLES AND APPLICATIONS

SAMPLE FOUR



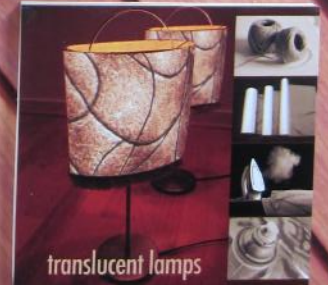
swimming pool flooring



SAMPLE FIVE

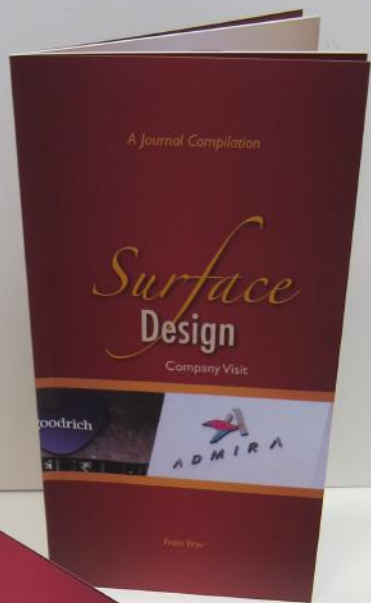


translucent lamps



Final Outcomes – The full set





- 13. Primaling
- 14. Nic
- 15. Elana
- 16. Elisha
- 17. Michelle
- 18. Ivan
- 19. Sapphire

Mon. 23rd APRIL, 3PM |||

Karen's office





Designers do not always refers to human; nature is also a designer that come before mankind. For instance, fruits and vegetable are the product design by nature. The forms, shapes, textures and patterns of this natural product are always inspiring elements to us. My objective of this project is to dissect and observe the cross sections of fruits and vegetables and adopt them in the design of the products in our daily life.



ISSECTI ○ N

Material Board



The translucent material of the PVC sheet represent the texture of the onion. The curl of the material follow the flow of the onion's cross section. The strips are place at different height to create a more dynamic 3D texture.



Slicing up the orange foam into thin pieces to resemble the cross section of the lotus roots. These sliced foam are then burn with fire to create the curl to give the texture a more 3D feel.



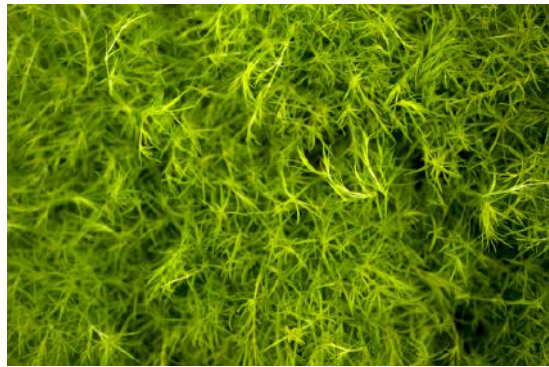
The coiled pieces of the cardboard resemble the cross section pattern of a purple lettuce. The coiling of the cardboard strips follow the contour of the cross section.



Inspired by the base of the plastic bottle, the technique of vacuum forming is being use to create the form of the orange's cross section. Mixing gel with color to create the pulp of the oranges to add moist to the design.







| the inspiration board |

BRYOPSIDA

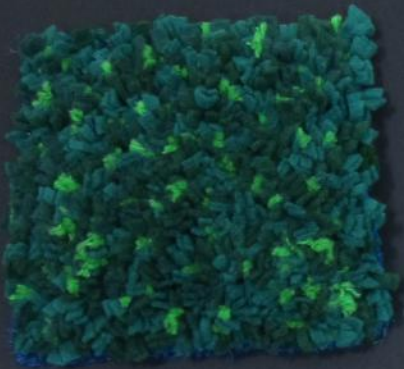
Bryopsida explores the textures of moss beds through a series of material designs inspired by the forest floor. Inspired by moss, or Bryopsida (the scientific name of approximately 11,500 species of moss), the plant species is soft to touch and appears like miniature plants with their intricate details.

The mossy green often seems to magically sprout out in abandoned places, slowly overtaking the entire space. Growing out in forgotten spaces, the beauty of the moss often goes unnoticed. Yet when one knows where to look, the green speaks of both growth and rejuvenation.

In the tradition of glass terrariums, people have been encapsulating mosses in jars as a fuss-free way to introduce nature into the home. The green moss acts as a respite and comfort for the eyes, transporting one to the serene rainforest woodland.

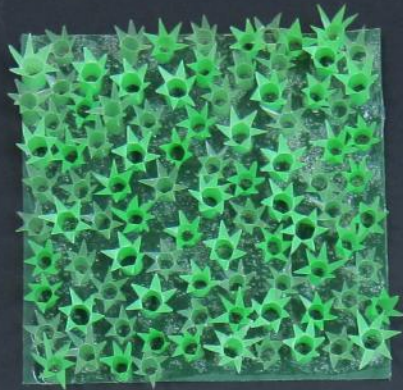
The tactile designs capture the comforting beauty of these rich undergrowth with the use of soft textures, organic shapes like bulbous forms, green hues and the repetition of units arranged in an intricate fashion to resemble the close-up details in mosses. Within the designs is also the element of randomness to simulate the beautiful imperfections found in nature.

When integrated into our urban interior living spaces, the Bryopsida designs acts as a counter balance to our concrete jungle. Just like the glass terrariums, Bryopsida brings nature to the home providing the calm of returning to nature; reinvigorating the spirit.



Bryopsida Turf

felt strips attached to a base with the latch hook technique



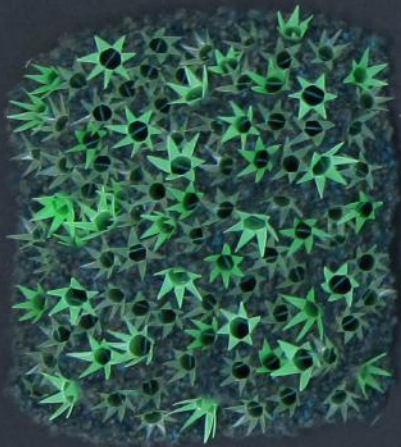
Bryopsida Translucent Starburst

straws split at one end forming star designs & glued onto a green tracing paper



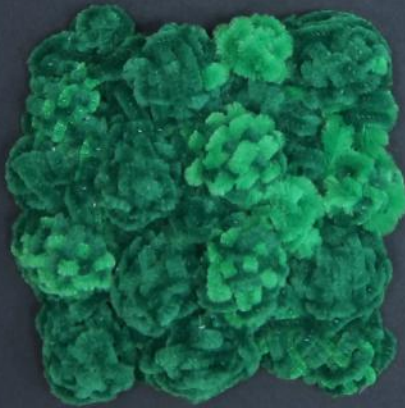
Bryopsida Rounds

yarn knitted in a round forming balls & sewn together



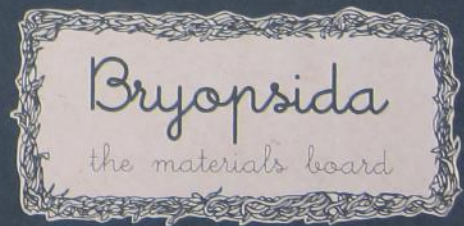
Bryopsida Tactile Starburst

straws split at one end forming star designs & threaded together on a knitted yarn base



Bryopsida Blobs

green pipe cleaners weaved together in multiple units





| the applications board |
BRYOPSIDA

The Bryopsida range of materials rendered on interior home-furnishings, infusing a little bit of the serene green nature into the home.



SURFACE DESIGN

A step-by-step guide (Complimentary Samples)



SURFACE DESIGN

A step-by-step guide

Elana Tan Pei-Ying

