

Winter 2024 Courses

Undergraduate art history courses are open to all UO students. In addition to specialized upper-division courses, the department offers a wide range of courses that fulfill General-Education Requirements. Art history majors should refer to the Distribution Requirements listed for completing their upper-division distribution requirements. Course dates and times may be subject to change; please check the UO Class Schedule for the most up-to-date information.

Classes being offered Winter 2024 (Scroll down for course descriptions):

- ARH 150
- ARH 199
- ARH 209
- ARH 315
- ARH 317
- ARH 323
- ARH 327
- ARH 354
- ARH 359
- ARH 372
- ARH 407/507 (multiple topics)
- ARH 421/521
- ARH 453/553
- ARH 457/557 (multiple topics)
- ARH 481/581
- ARH 607

A&L: Arts and Letters
 GP: Global perspectives
 IC: International cultures
 US: US Difference, Inequality, Agency

Winter 2024 Courses



ARH 150 Intro to Visual Culture

Joyce Cheng

TR 1400-1520 | Location: MCK 221

This course introduces to students to a wide variety of methods for looking at and analyzing images and objects of visual culture, drawing on concepts and methods from art history, anthropology, archaeology, and media studies.

Core Ed: A&L

Format: Lecture/Discussion Sections



ARH 199 Sp St Representation of Otherness

Gianna Carotenuto

MW 1600-1720 | Location: WEB SYNC

In this course, we are going on an experiential journey through time (15th century to present) to examine the history of the representation of "O"therness. The course examines art of all mediums - painting, drawing, film, poetry, literature, and primarily photography to unpack the legacies of colonialism and reconsider a world view by actively "reframing" the views about "O"thers.

Format: Lecture

Winter 2024 Courses



ARH 209 History of Japanese Art **TBA**

MW 1000-1120 | Location: Lecture WEB SYNC

This course introduces students to the historical survey of the visual arts of Japan. Selected works of painting, sculpture, architecture, and other arts studied in relation to the culture in which they were produced. Lecture WEB SYNC. Weekly discussion sections, in-person.

Core Ed: A&L, GP, IC

Format: Lecture/Discussion Sections



ARH 315 History of World Architecture II **Keith Eggener**

TR 1600-1720 | Location: LIL 282

This course surveys the history of world architecture from roughly 1400 to the present. Key projects will be analyzed in terms of materiality, form and function, patronage and professionalism, and the wider social and cultural discourses of which they were a part.

Core Ed: A&L, GP, IC

Format: Lecture/Discussion Sections

Winter 2024 Courses



ARH 317 Romanesque Architecture

Maile Hutterer

R 1200-1320 | Location: FEN 117 + ASYNC WEB

Examines Romanesque architecture through the lens of pilgrimage, a major cultural force in the Middle Ages. This class is hybrid. It combines reduced classroom instruction with additional asynchronous work.

Core Ed: A&L

Distribution Req: Medieval

Format: HYBRID (Lecture + ASYNC WEB)



ARH 323 Roman Art & Architecture

Kris Seaman

TR 1600-1720 | Location: ALL 140

This course is a survey of the art and architecture of Republican and Imperial Rome throughout the Mediterranean and Near East. Considering the Roman world as a multicultural space, it explores works at locations such as Alexandria, Athens, Dura Europos, Jerusalem, Petra, Pompeii, and Rome.

Core Ed: A&L, GP, IC

Distribution Req: Ancient

Format: Lecture

Winter 2024 Courses



ARH 327 Medieval Art

Maile Hutterer

TR 1400-1520 | Location: STB 252

Introduction to the most important monuments of the Middle Ages, spanning the fourth through the 15th centuries with the primary focus on Western Europe and Byzantium.

Core Ed: A&L

Distribution Req: Medieval

Format: Lecture



ARH 354 Contemporary Art

Simone Ciglia

MW 1400-1520 | Location: CHA 220

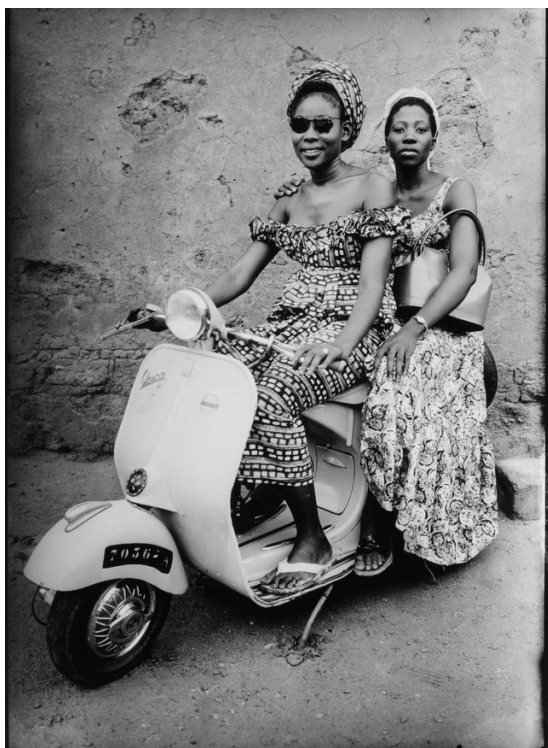
Survey of contemporary art in the West from 1945 to the present in relation to historical, social, cultural, and political concerns.

Core Ed: A&L, IP, US

Distribution Req: Modern/Contemporary

Format: Lecture

Winter 2024 Courses



ARH 359 History of Photography

Gianna Carotenuto

MW 1000-1120 | Location: SYNC WEB

This course is an interdisciplinary investigation of representation in the Global context. The course explores the colonial applications of photography from a historical and scientific lens, and presents the counter-point of how photographic imagery is currently being de-colonized and reframed by Indigenous, BIPOC and other marginalized identities that have experienced.

Core Ed: A&L

Distribution Req: Modern/Contemporary

Format: Lecture (SYNC WEB)



ARH 372 Arts Colonial Latin America

Victoria Ehrlich

MW 1600-1720 | Location: ESL 199

This course examines the role of art and architecture in colonial Latin America (ca. 1492-19th century).

Core Ed: A&L, GP, IC

Distribution Req: Early Modern

Format: Lecture

Winter 2024 Courses



ARH 407/507 Gender, Marriage, & Family in Renaissance Art

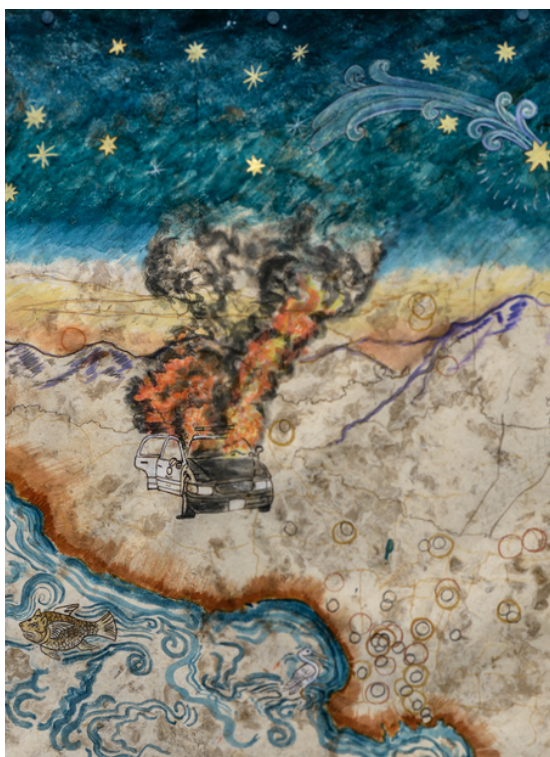
Victoria Ehrlich

MW 1400-1520 | Location: STB 254

In the Renaissance, ideas regarding marriage, family, and the various stages of human life were reflected in paintings and sculptures, as well as in the material objects utilized in daily activities, including painted marriage furniture and birth trays. We will explore the ways these objects marked physical and imagined boundaries, served as didactic aids, and reinforced social ideals. Important to our inquiry will be the role of gender, age, and status within the construct of the family unit, as well as its political and economic implications for the civic sphere.

Distribution Req: Early Modern

Format: Seminar



ARH 407/507 Making the Exhibition: Policing Justice

Nina Amstutz

F 1400-1650 | Location: LA 241

The seminar teaches students about the practice of socially engaged curating and what is involved in developing an exhibition with local community partners. It centers around the upcoming exhibition Policing Justice, opening at the Portland Institute of Contemporary Art in February, and will include fieldtrips to the show. Students will work collaboratively to develop their own exhibition proposals based on contemporary social issues.

Distribution Req: Modern/Contemporary

Graduate Certificate in Museum Studies

Format: Seminar

Winter 2024 Courses



ARH 421/521 Classical Greek Art and Architecture

Kris Seaman

M 1600-1850 | Location: CON 301

This seminar explores art and architecture in Greece during the 5th-4th centuries BCE.

Core Ed: GP, IC

Distribution Req: Ancient

Format: Seminar



ARH 453/553 Top Outsider Art

Joyce Cheng

TR 1200-1320 | Location: PETR 102

This reading- and writing-intensive course considers the work of “outsider” or self-taught artists from the late 19th century onward, from the history of professional or “inside” art in the western world to the entry of outsider art into the museum and global art industry.

Distribution Req: Modern/Contemporary
Graduate Certificate in Museum Studies

Format: Seminar

Winter 2024 Courses



ARH 457/557 Top Land + Environ Art **Emily Eliza Scott**

TR 1400-1520 | Location: LA 241

This course provides an introduction to art from the mid-1960s onward that has engaged landscape, environment, and/or ecology from monumental earthworks in the American West from the 1960s-70s, which have dominated many art historical accounts, to practices emerging from feminist, indigenous, and non-Western contexts.

Distribution Req: Modern/Contemporary

Format: Seminar



ARH 457/557 Top Exhibition

Simone Ciglia

MW 1000-1120 | Location: LA 241

The exhibition is the medium “through which most art is known,” and is at the center of the burgeoning field of exhibition studies in recent years. This seminar examines the exhibition as a format for presenting and experiencing contemporary art, analyzing a selection of groundbreaking shows that took place from the 1960s to the present.

Distribution Req: Modern/Contemporary

Graduate Certificate in Museum Studies

Format: Seminar

Winter 2024 Courses



ARH 481/581 Top Chinese Architecture **Mariachiara Gasparini**

TR 1000-1120 | Location: LA 241

This seminar discusses Chinese architecture, including landscapes, burial sites, and Buddhist caves, from the beginning of the Han period (3rd cent. BCE) to the contemporary period. Students will analyze traditional Chinese architecture through art and records, and reevaluate their use through time.

Core Ed: GP, IC

Distribution Req: Ancient, Medieval

Format: Seminar



ARH 607 Sem Who Owns Art? **Mariachiara Gasparini**

F 1000-1250 | Location: LA 241

This seminar examines the provenance, acquisition, and ownership of various art forms and monuments across space and time. Through case studies, we discuss the role of the agents involved in their acquisition and sale (auction houses, dealers, private collectors, museums, and other institutions), the making of forgeries and copies, and the role of UNESCO in the protection of world heritage.

Distribution Req: Modern/Contemporary

Graduate Certificate in Museum Studies

Format: Seminar