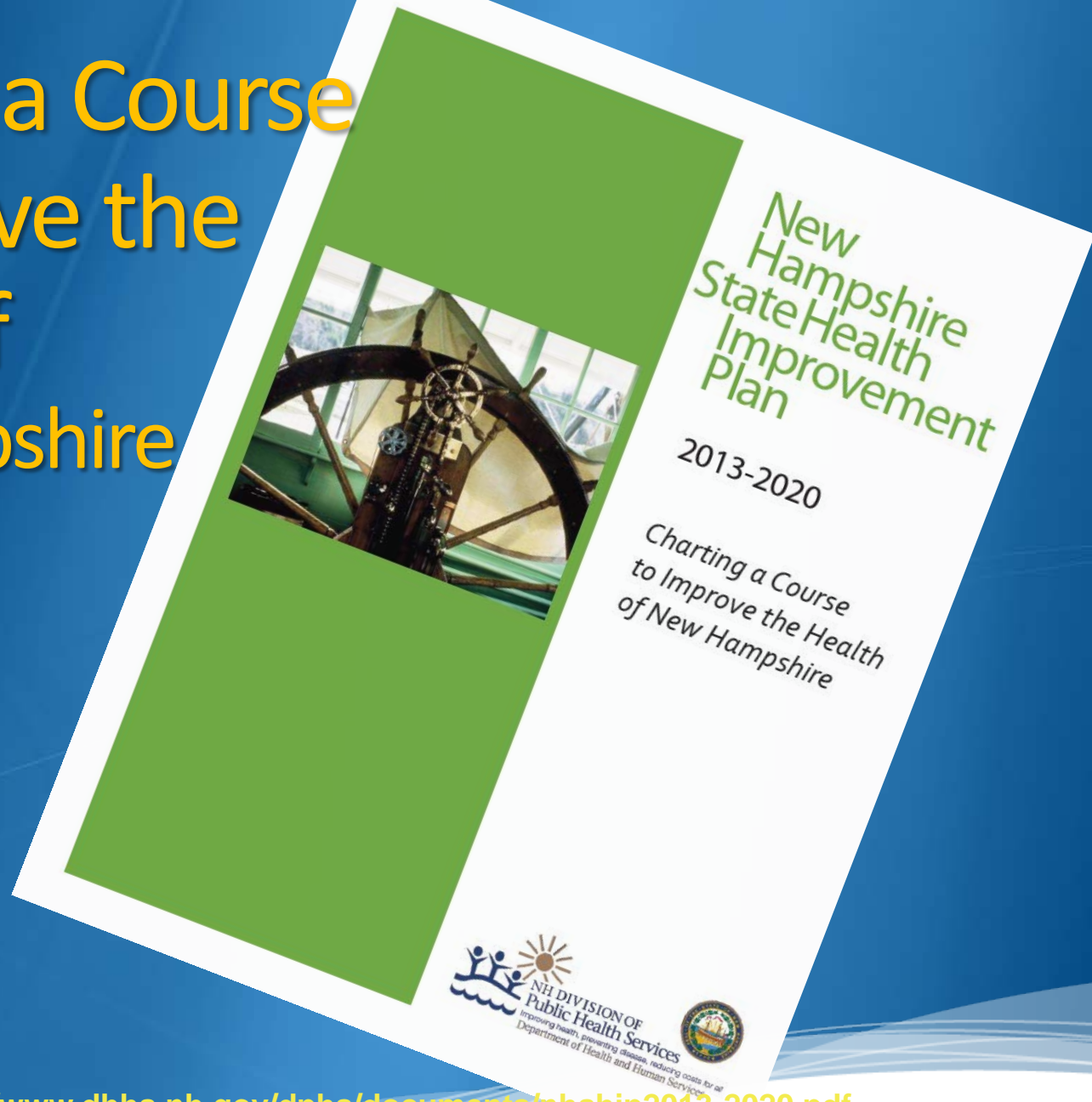


New Hampshire State Health Improvement Plan

Dr. Christine Bean
NH Public Health Laboratories
Division of Public Health Services

Charting a Course to Improve the Health of New Hampshire



<http://www.dhhs.nh.gov/dphs/documents/nhship2013-2020.pdf>

Flint, Michigan Water Crisis



Flint, Michigan



Pease Tradeport Well Contamination



Pease Tradeport



SHIP Priorities

- Tobacco
- Obesity/Diabetes
- Cardiovascular Disease
 - Coronary heart disease
 - Stroke
 - High blood Pressure and High blood cholesterol
- Healthy Mothers & Babies
 - Preterm births
 - Autism Spectrum
 - Oral Health children
 - Teen pregnancy
- Infectious Disease
 - Childhood immunizations
 - Adult flu vaccine
 - Food borne illness
 - Healthcare associated infections
- Misuse of Alcohol and Drugs
 - Alcohol use-binge drinking
 - Marijuana use
 - Non-medical use of prescription pain medication
- Cancer Prevention
 - Colorectal
 - Breast
 - Melanoma
 - Radon- lung cancer
- Asthma
- Injury Prevention
 - Elderly falls
 - MV teen crashes
 - Suicide
 - Unintentional poisoning
- Emergency Preparedness

So how do we get there?

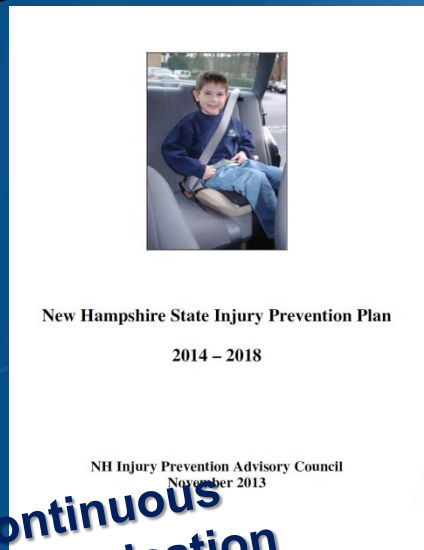
common agenda



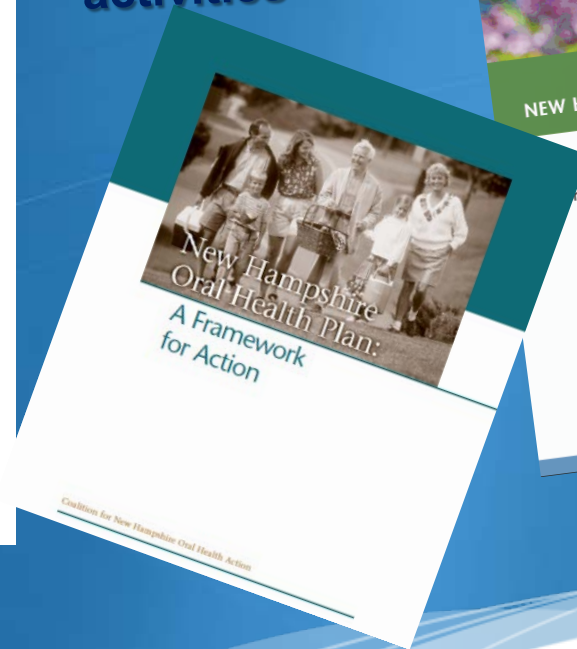
shared measurement



mutually reinforcing activities



continuous communication



backbone support

Implementation Strategies

- Raise Awareness
- Engage current and new partners
- Monitor activities and evaluate outcomes
- Align policies, plans, priorities and resources



Isolated
Impact

Collective
Impact

Thank you and enjoy the meeting!



Contact information:

Christine L. Bean

NH PHL

clbean@dhhs.state.nh.us

603 271-4657