

# Field Cards

For Identifying

# Dragonfly

# Nymphs

To

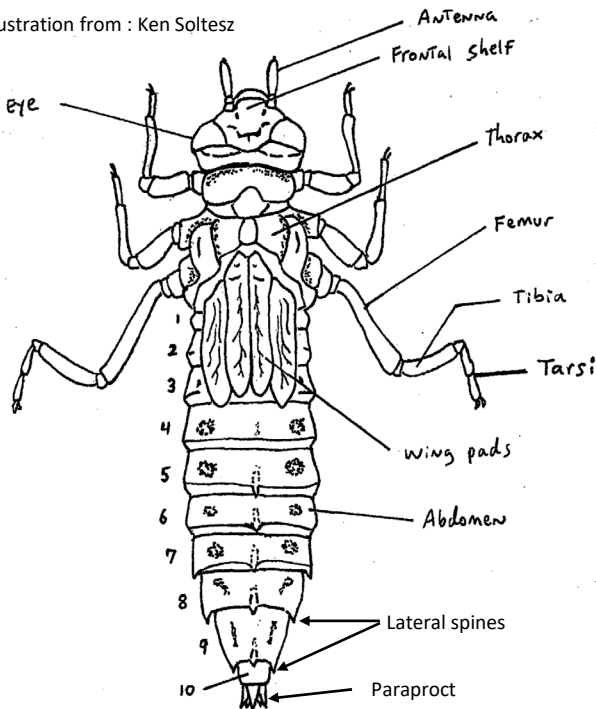
# Family



For use with Mercury in Dragonfly Nymphs from National Parks Citizen Science  
Dragonfly Nymphs Collection

# Dragonfly Nymph General Body Plan










Illustration from : Ken Soltesz



Labium  
(scooped)

Illustration from: Megan C. Hess

# Key for identifying dragonfly nymph to family

1a	Labium (mouth part) is flat, or nearly flat ..... go to	2	 a.
1b	Labium (mouth part) is spoon-shaped or mask-shaped and covers the face ..... go to	3	 b.
2a	Antennae short and stubby ..... <i>Gomphidae</i>		 b.
2b	Antennae long, body is slender ..... <i>Aeshnidae</i>		 b.
3a	Lateral lobes of labium have jagged teeth ..... <i>Cordulegastridae</i>		 b.
3b	Lateral lobes of labium do not have jagged teeth ..... go to	4	 b.
4a	Horn on front of head (sticks up between the eyes) ..... <i>Macromiidae</i>		 b.
4b	No horn on front of head ..... go to	5	
5a	If hooks present on back of abdomen they are curved, last lateral spine longer than paraproct..... <i>Corduliidae</i>		 b.
5b	If hooks present on back of abdomen they are spiky, paraproct longer than lateral spine..... <i>Libellulidae</i>		 b.

Illustrations:

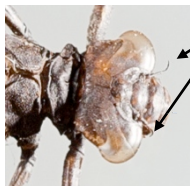
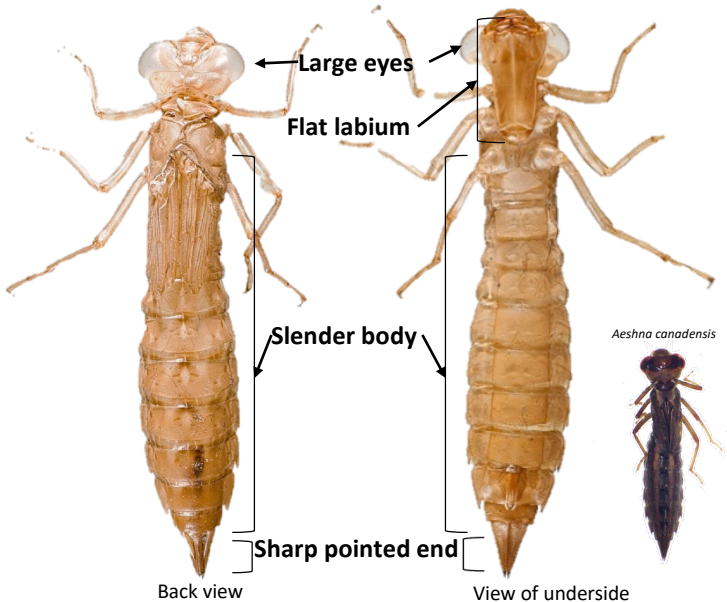
a.. from : [www.bumblebee.org](http://www.bumblebee.org)

b. from : Ken Soltesz

# Family: Aeshnidae

Common name: Darner dragonflies

Usually found: At the edges of ponds and lakes or in marshes and bogs



Long, slender antennae

Labium guide



Flat

Spoon-like/mask-like



*Boyeria vinosa*

Photos of exuviae: A. Anderson, Kingfisher Photography, Old Town, ME

Photos of nymphs: Megan C. Hess

Family: **Aeshnidae**

Common name: Darner dragonflies

Usually found: At the edges of ponds and lakes or in marshes and bogs

Common Green Darner

*Anax junius*



© 1996 Blair Nikula

# Family: Gomphidae

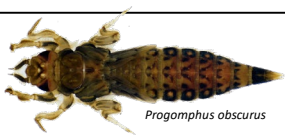
Common name: Club-tailed dragonflies

Usually found: In very small streams and ponds to large rivers and lakes

*Stylurus scudderi*



*Progomphus obscurus*



Short, stubby antennae

Flat labium

Tapered or blunt end

View of underside

Back view

*Ohiogomphus rupinsulensis*



Labium guide



Flat

Spoon-like/mask-like



Family: **Gomphidae**

Common name: Club-tailed dragonflies

Usually found: In very small streams and ponds to large rivers and lakes

Dragonhunter

*Hagenius brevistylus*



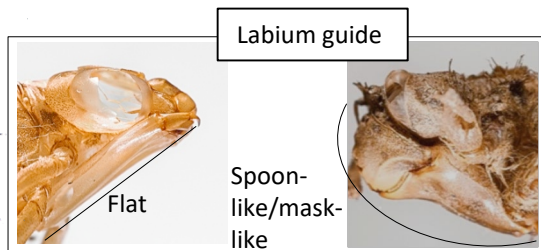
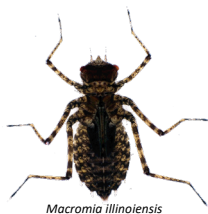
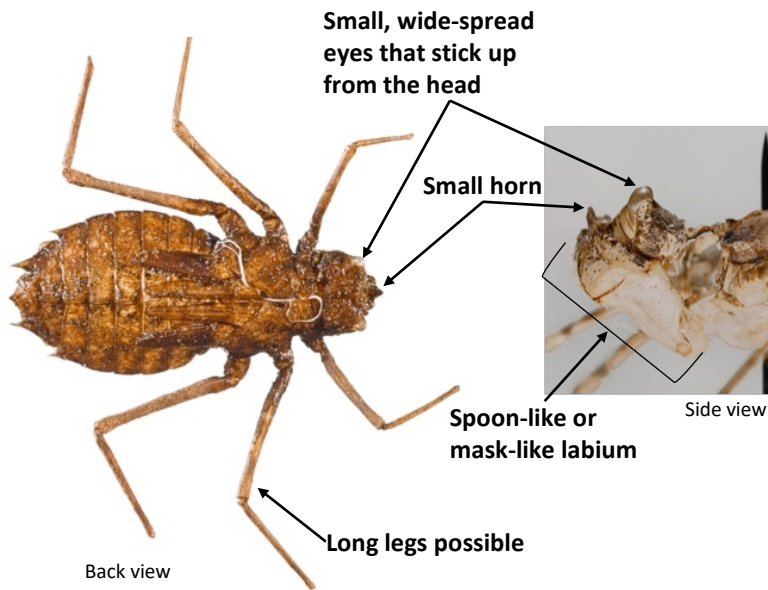
<http://informatics.bio.umass.edu/research/odenews/bnikula/habr.jpg>

Nymph photo: Megan C. Hess

Family: **Macromiidae**

Common name: Cruiser dragonflies

Usually found: in rivers, streams, and lakes with moving water



Photos of exuviae: A. Anderson, Kingfisher Photography, Old Town, ME

Photos of nymph: Megan C. Hess



Family: **Macromiidae**

Common name: Cruiser dragonflies

Usually found: in rivers, streams, and lakes with moving water

Swift River Cruiser



<http://informatics.bio.umass.edu/research/odenews/bnikula/mail.jpg>

Nymph photo: Megan C. Hess

# Family: Libellulidae

Common name: Skimmer dragonflies

Usually found: In ponds, lakes, swamps, marshes and ditches  
(slow-moving water)

If present: **Spine-like protrusions  
on back of abdomen**

Side view



**Lateral spine does not  
extend past paraproct**

**Spoon-like or  
mask-like labium**



**Smooth  
crenulations at  
the margin of  
the labium**

Head-on view



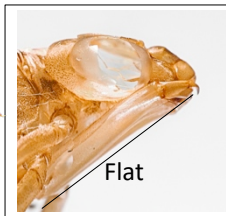
**Stocky body**

Back view

Labium guide

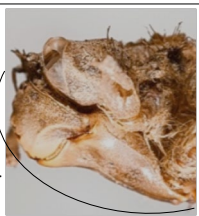


*Plathemis lydia*



Flat

Spoon-  
like/mask-  
like



Family: **Libellulidae**

Common name: Skimmer dragonflies

Usually found: In ponds, lakes, swamps, marshes and ditches  
(slow-moving water)

Calico Pennant

*Celithemis elisa*



© Blair Nikula 1996

# Family: Corduliidae

Common name: Emerald dragonflies

Usually found: In ponds, lakes, swamps, marshes and ditches (slow-moving water)

*Epithea princeps*



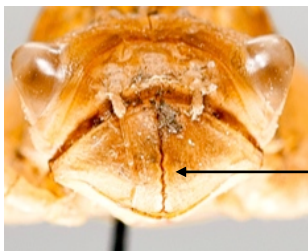
If present: **Curved protrusions on back of abdomen**

Side view



**Last lateral spine extends past paraproct** (most times)

**Spoon-like or mask-like labium**



**Smooth crenulations at the margin of the labium**

**Variable body shape**



Back view

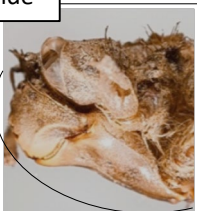
Head-on view

**Labium guide**



Flat

**Spoon-like/mask-like**



*Neurocordulia obsoleta*

Family: **Corduliidae**

Common name: Emerald dragonflies

Usually found: In ponds, lakes, swamps, marshes and ditches  
(slow-moving water)

American Emerald



# Family: Cordulegastridae

Common name: Spiketail dragonflies

Usually found: in small mostly wooded streams



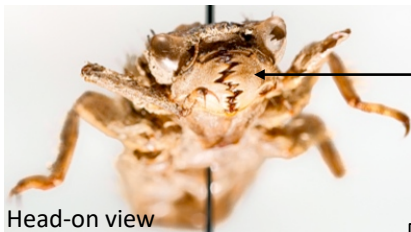
Side view

Spoon-like  
or mask-  
like labium



Stocky body

Back view



Head-on view

Very jagged  
teeth at the  
margin of the  
labium

*Cordulegaster diastatops*



*Cordulegaster maculata*



Flat

Labium guide

Spoon-  
like/mask-  
like



Family: **Cordulegastridae**

Common name: Spiketail dragonflies

Usually found: in small mostly wooded streams

Delta spotted spiketail



*Cordulegaster diastatops*

