



How does it shape up? Buttocks shape across wheelchair cushions.

Sharon Sonenblum, PhD¹, Stephen Sprigle, PhD, PT¹

Mary Shea, MA, OTR, ATP², Kelly Waugh, PT, MAPT, ATP³, Trevor Dyson-Hudson, MD⁴

¹ Georgia Institute of Technology, ² Kessler Institute for Rehabilitation, ³ University of Colorado Denver, ⁴ Kessler Foundation

Overview

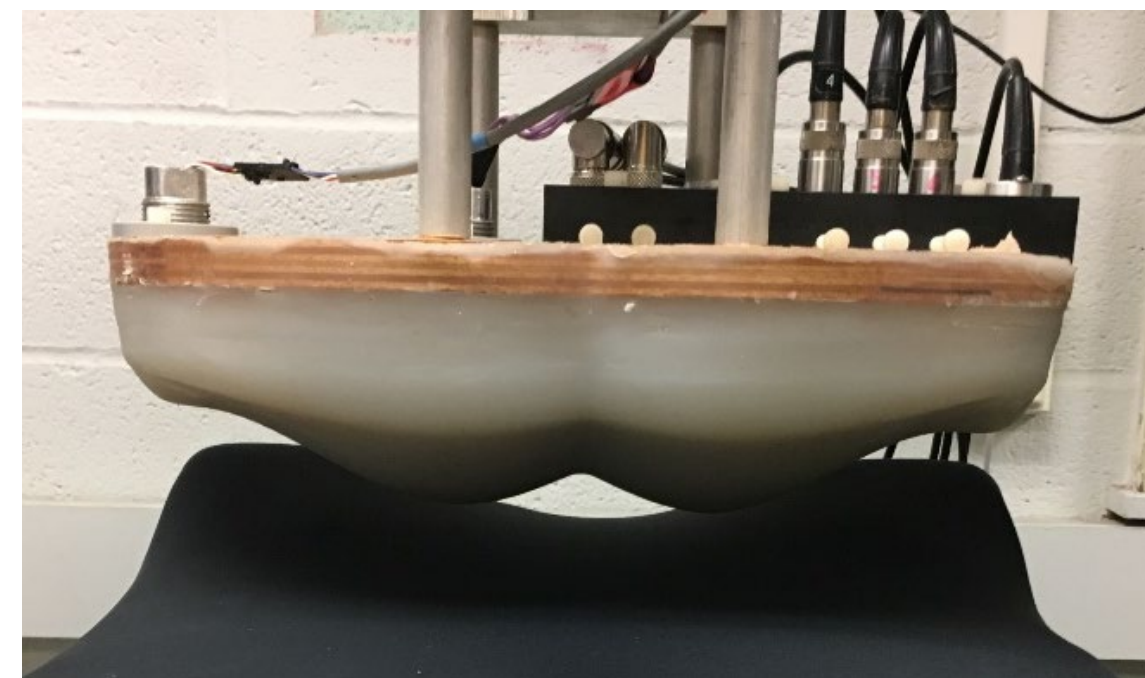
Shape Compliance is the ability of a cushion to support the buttocks with minimal buttocks deformation.

Biomechanical Risk is the intrinsic characteristic of an individual's soft tissues to deform in response to extrinsic applied force.

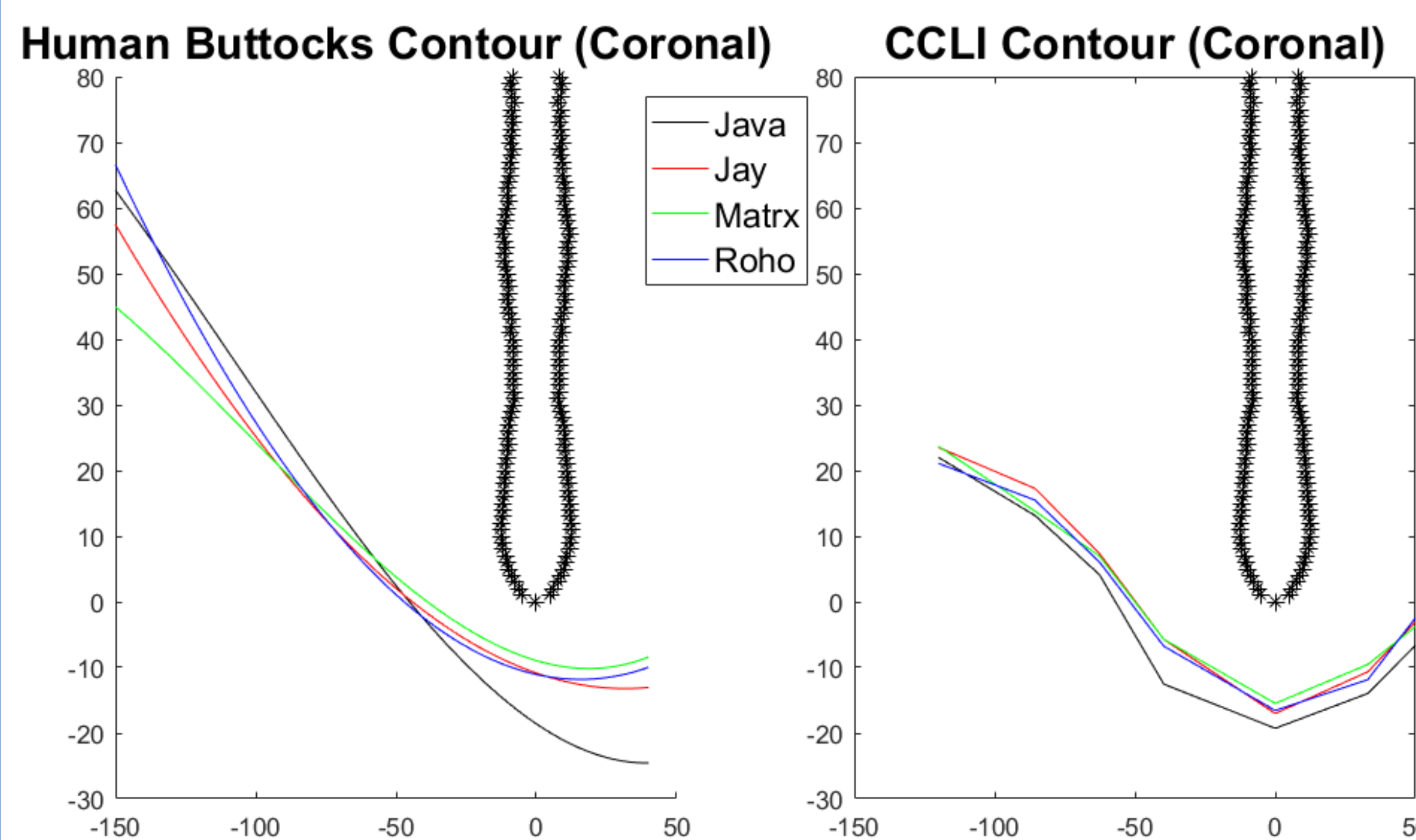
The objective was to describe the average contours of the human buttocks and of a compliant cushion indenter across different wheelchair cushions and across individuals of different levels of pressure ulcer risk.

Compliant Cushion Indentor (CCLI) Versus Human Testing

- CCLI tested with
 - 61 kgf (representing a 95 kg person)
 - Jay3, Roho HP, and Matrx Vi, Ride Java



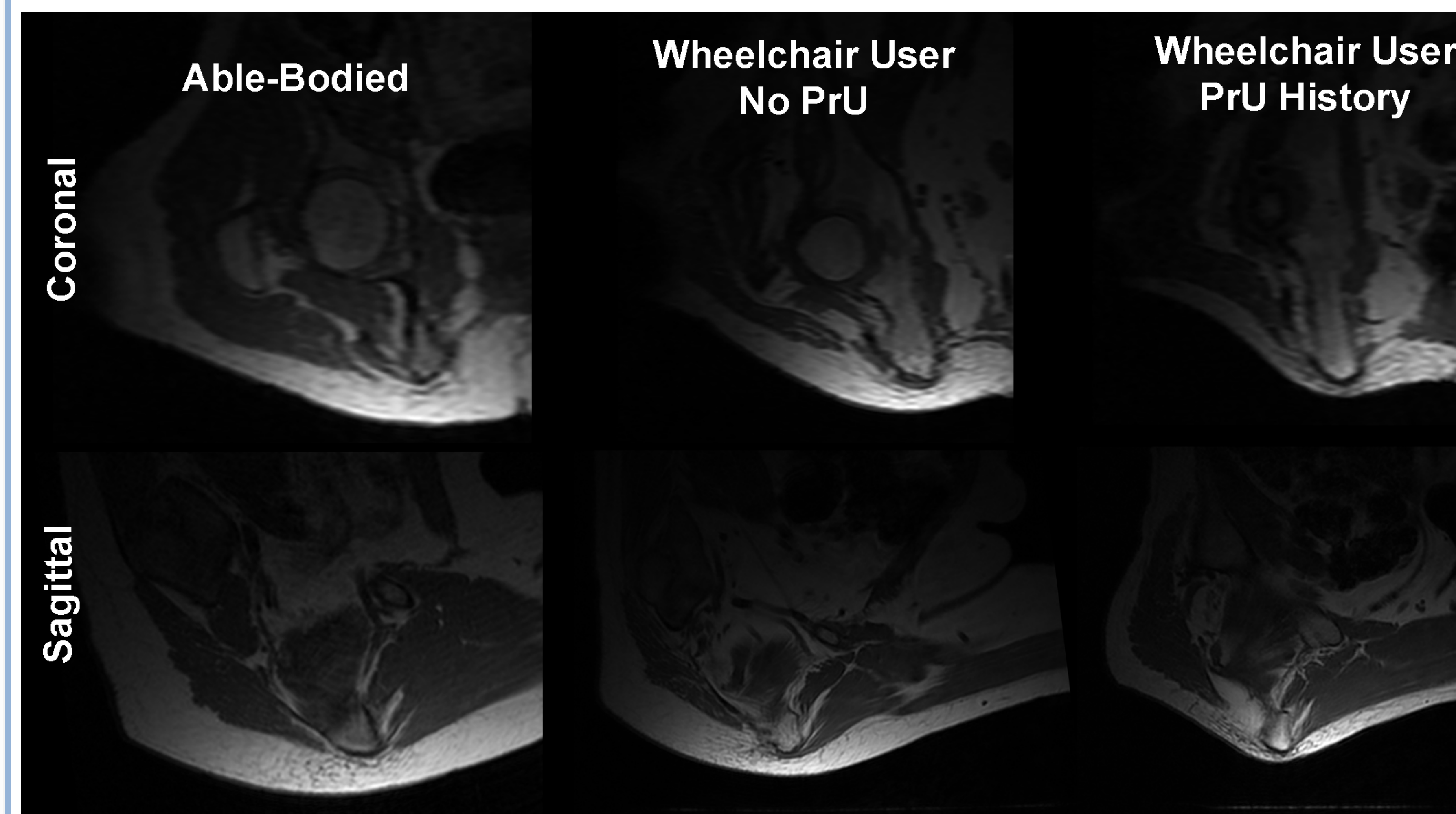
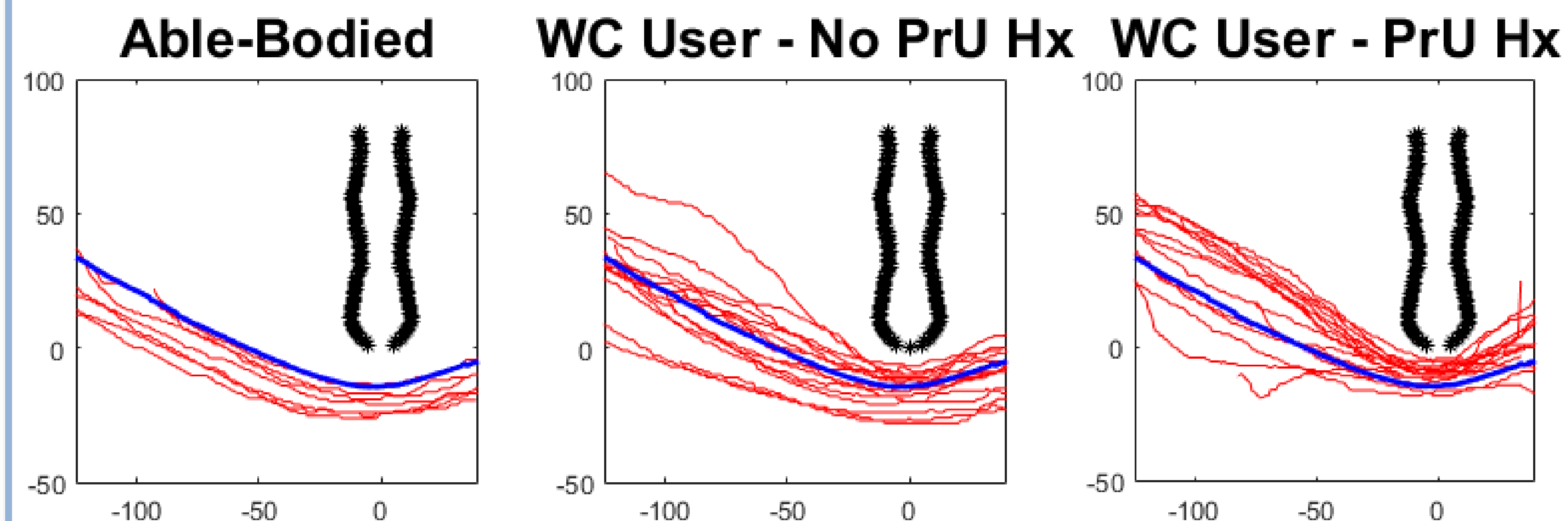
- Human testing in the seated MRI. 3rd order polynomial fit to coronal skin contours
- Ride Java (n=15), J2 Deep Contour (n=9), Jay Fusion (n=3), Jay Active (n=1), Matrx Vi (n=13), Roho HP (n=15)



Buttocks Shape According to Pressure Ulcer (PrU) Risk Status

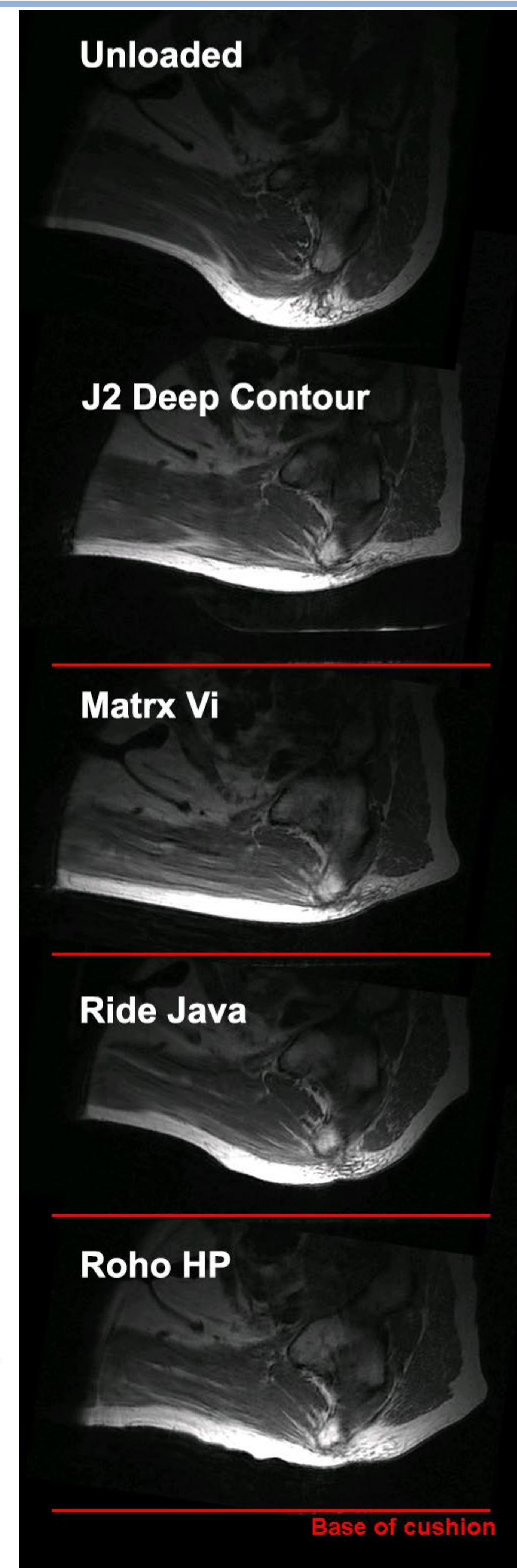
Coronal contours were averaged across all participants when seated on flat HR45 foam (including able-bodied and wheelchair users) and is presented in the blue line below. Red lines show individual subjects in each risk status group, with MRIs of one example participant from each category demonstrated below. Buttocks contours differ considerably according to risk status.

— Average of all AB & WC
 — Individual Contours



One person, many cushions

- 53 yo M with Spina Bifida
- 8 years in WC
- 5'11", 205 lb
- No Hx of PrU
- Sagittal views on 4 different wheelchair cushions
- Shear strain of adipose just posterior to ischium most evident on J2 Deep Contour and Matrx Vi
- Tissue thickness under the ischium is similar on all cushions
- Gluteus maximus is posterior and superior to peak of ischial tuberosity on all cushions



Discussion

Tissue contours in the loaded buttocks present an interesting way to investigate cushion shape compliance and to compare biomechanical risk of individuals.

Acknowledgements

The authors thank Dr. John Greenhalgh (and Fonar) for his expertise in collecting the MRI images and use of the scanner.

Funding

This work was funded by NIDILRR under grant number 90IF0120. Materials support and MRI scanner time was also supported through a donation from Ride Designs.