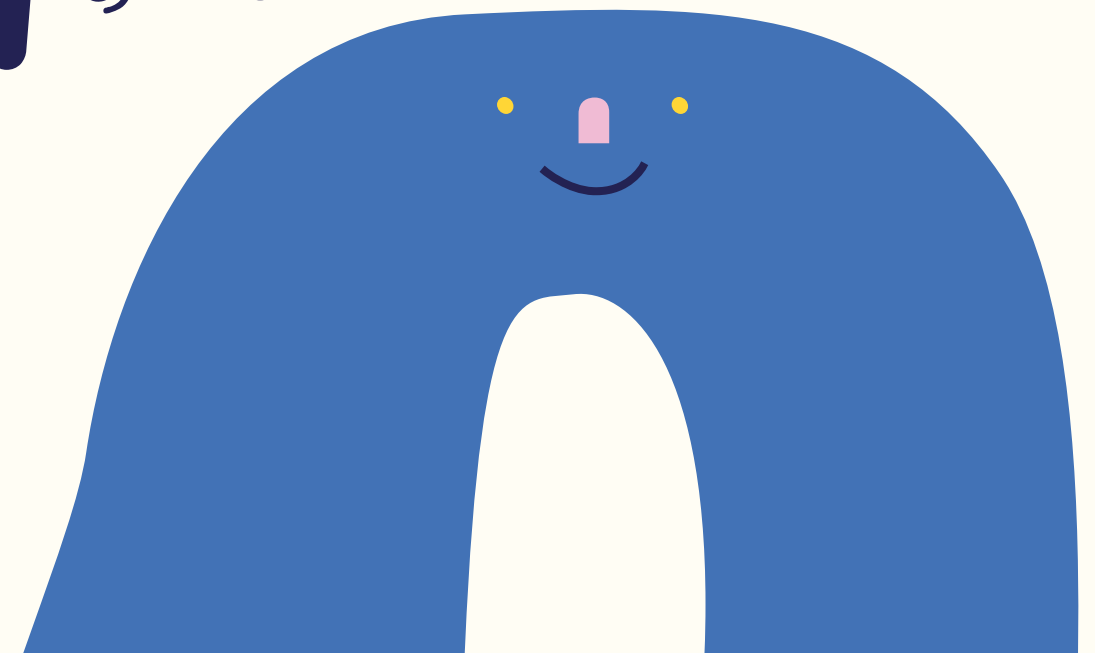
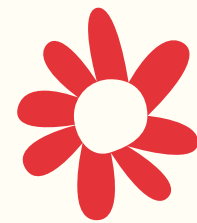


# CHILD INTERVENTION AND TREATMENT

Spring 2023

SERVICE-LEARNING  
CONNECTIONS



# CONNECTIONS AT ELLIS EARLY LEARNING



**3) SOCIAL Emotional Learning/EF Skills**

- Emotions are talked about during circle time (w/ pictures of themselves + mirror)
- heavy emphasis on using words and respecting personal space
- learning to share/wait your turn for various games and toys
- Pictures of Emotions all around the classroom
- Kids have to clean up after themselves
- Learning how to manage & identify big feelings

**2) POVERTY**

- 18% of families have open cases w/ DCF
- Every Friday Parents get to take left over food & necessities from the week
- Kids compare the items they have in their closets - they wonder why they don't have shoes or if their pants are dirtier than their friends
- Breakfast provided every morning
- 65% of students receive childcare subsidies
- Snacks given to parents when asked for diapers/food

**4) ATTACHMENT**

- Big attachment to parents especially toward the end of the day
- Children recognize-ing volunteers and teachers and going to them for support
- Children wave to their parents after they are dropped off
- Kids are friendly with the other kids parents of big sense of community
- unfamiliar w/ strangers crying & fear

**5) Early/School-Based interventions**

- mandated reporters looking for signs of neglect
- Books being sent home w/ children
- Gross vs. Fine Motor Rooms/Activities
- Newborn to Kindergarten

**6) CRITICAL/ SENSITIVE PERIOD**

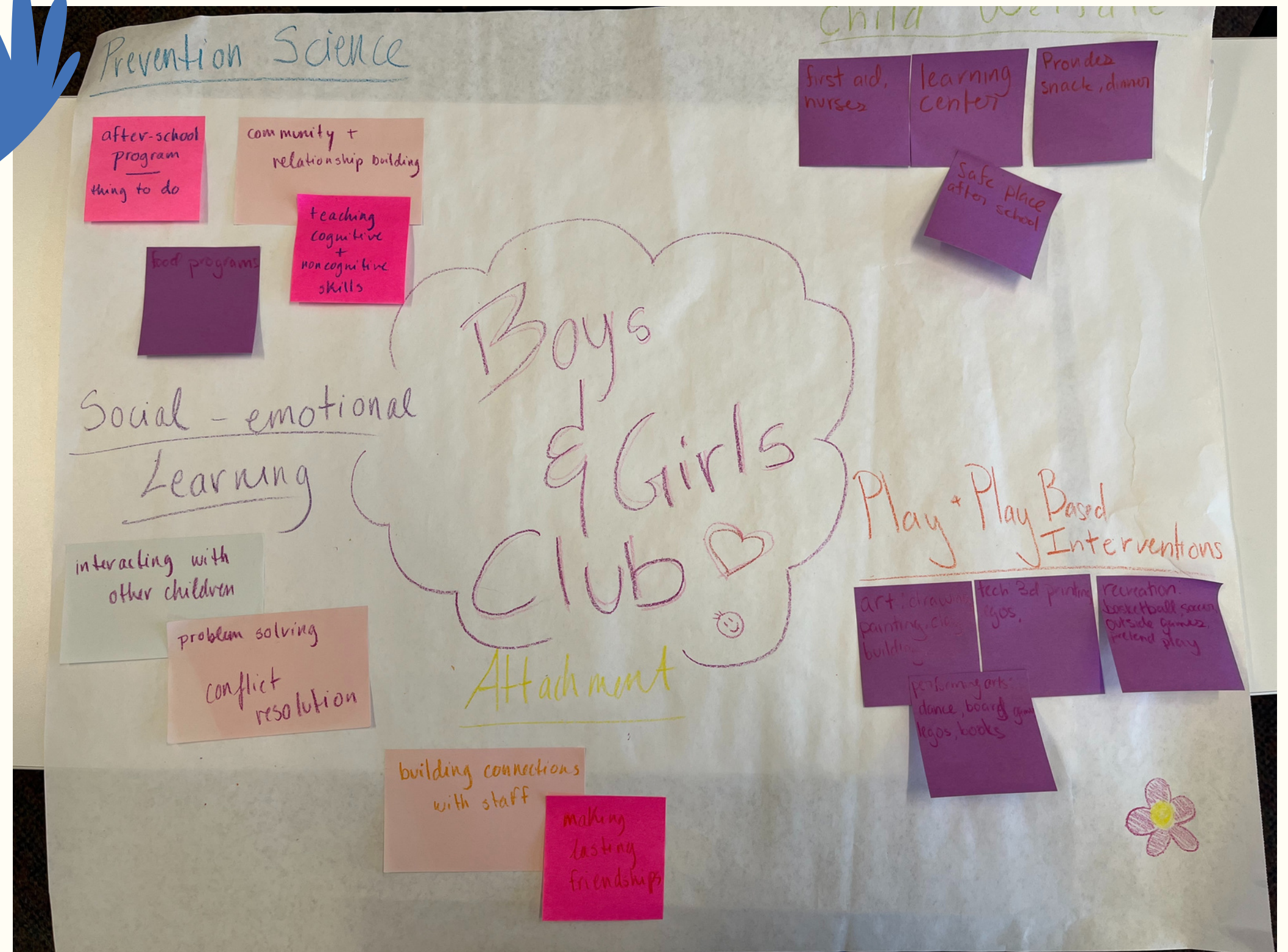
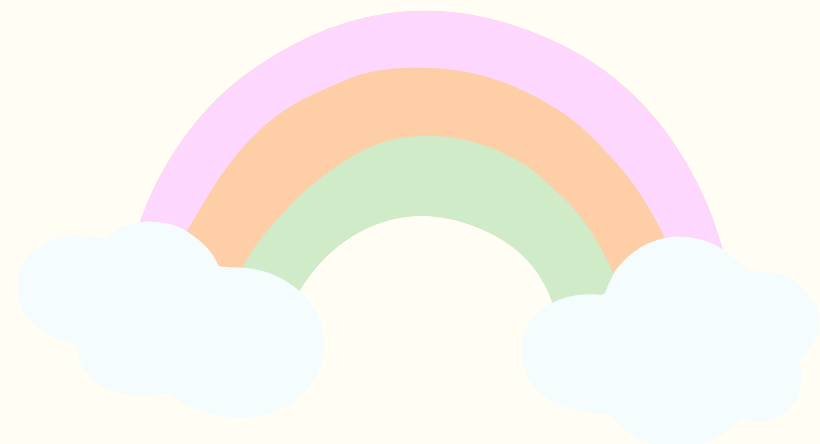
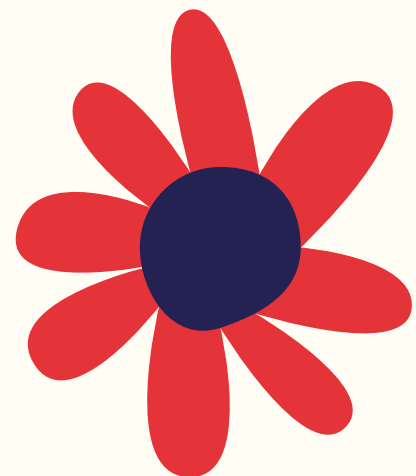
- Teaching sharing / non-cog skills
- Teaching 3+ langs English Spanish ASL

♡

# BOYS AND GIRLS CLUB ADVENTURES



**BOYS & GIRLS CLUBS  
OF BOSTON**



# COLLAB WITH BEACON COMMUNITIES



Beacon communities!

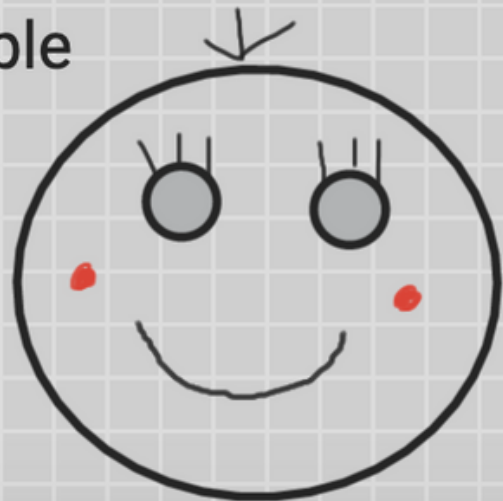
key course concepts:

**economic:**

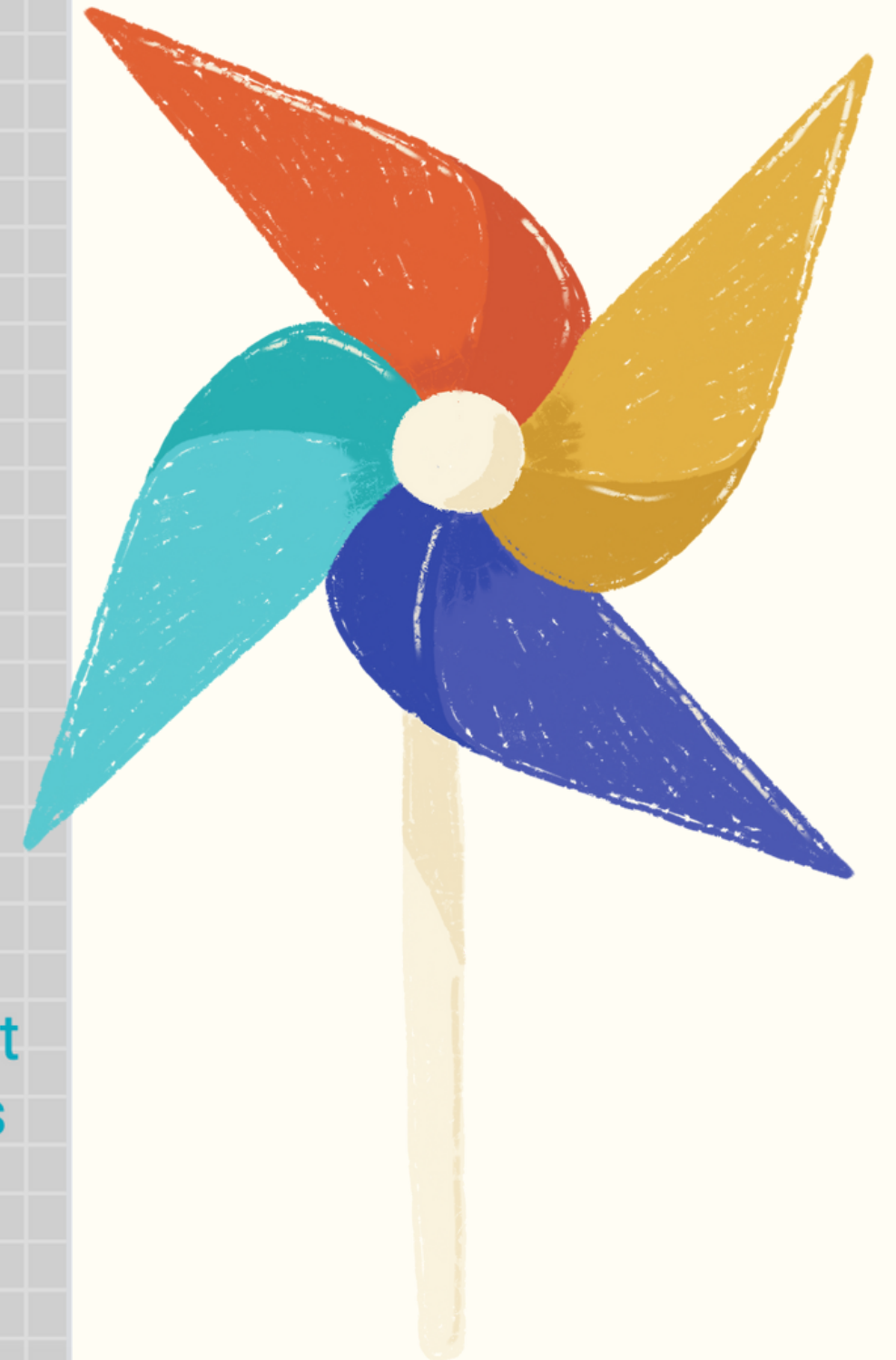
- poverty/resilience (located in low-income housing community in Boston)
- welfare - free snack provided, homework opportunities

**social/academic:**

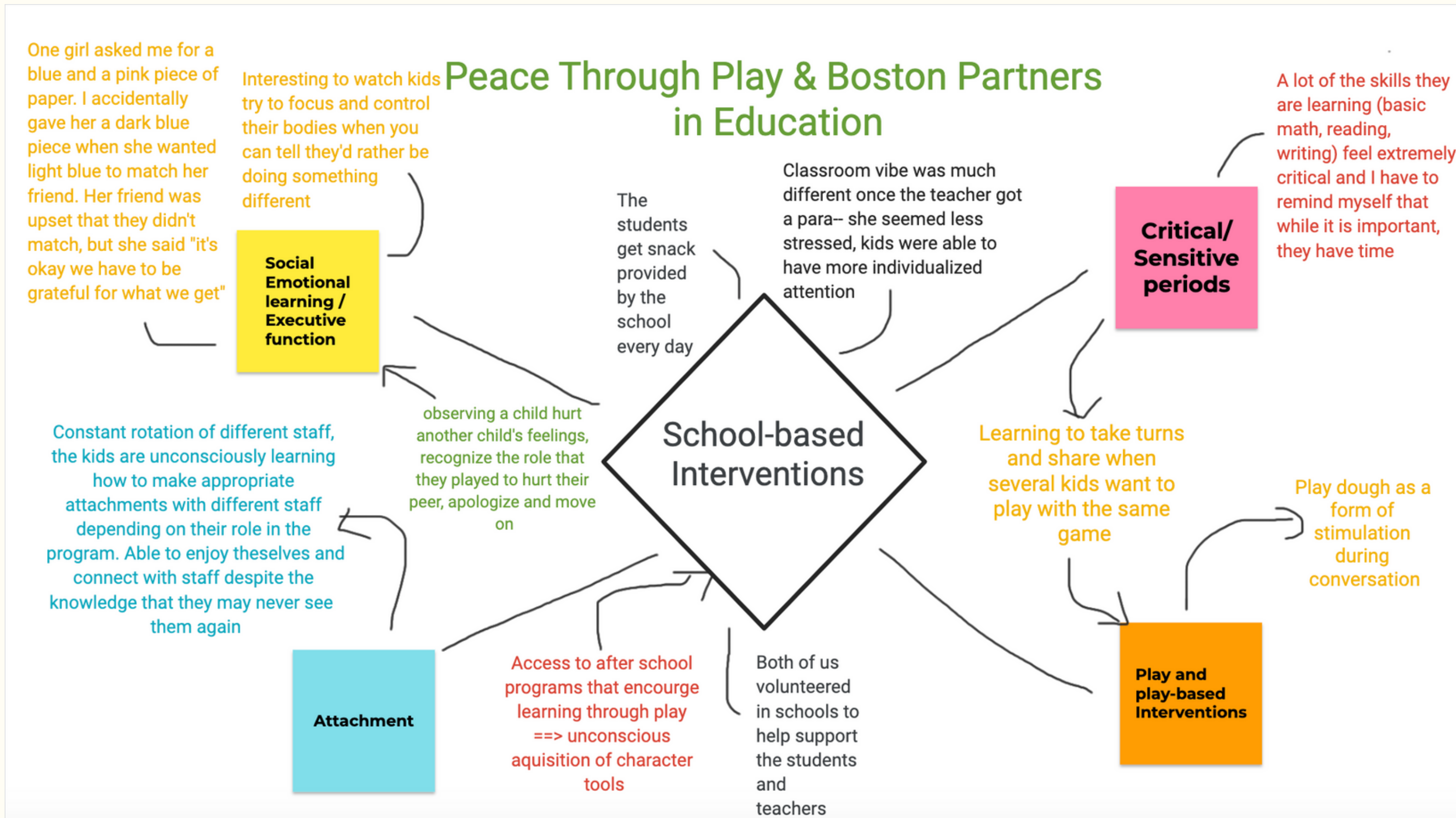
- attachment - relationships w/ supervisors + other peers
- social emotional learning - develop peer interactions among a diverse group of ages and experiences
- executive function - have to learn/do homework before computer, develops patience
- play-based - access to computer games, sometimes bring own toys
- ecological model: after-school program supporting children while parents are unavailable



summary: beacon communities serves as an important aspect of the children's ecosystem by providing after-school supports for children and families living in low-income housing while providing space to develop healthy peer relationships in a non-school context.



# PLAYING AND LEARNING AROUND BOSTON



# TEAMWORK AT ST. AMBROSE

