



# **Emergency Evacuation Plan and Implementation Guidelines**

## **The Pennsylvania State University**

**STUCKEMAN FAMILY BUILDING**

**(0757-000)**

**OCTOBER 2019**

# Table of Contents

Introduction

Implementation Guidelines and Instructions

## **Evacuation Plan**

**Section I:** Building and Personnel Information

**Section II:** Emergency Phone Numbers

**Section III:** Purpose and Objectives

**Section IV:** General Guidelines

**Section V:** Responsibilities of Building/Department Emergency Coordinator and Safety Monitors

**Section VI:** Alerting or Signaling Building Occupants in Case of Fire or Other Emergency

**Section VII:** Evacuation Procedures for Building Occupants

**Section VIII:** Disabled Occupants

**Section IX:** Critical Operations Shutdown

**Section X:** Accountability Procedures for Emergency Evacuation

**Section XI:** Rescue and Medical Duties

**Section XII:** Training and Communications

## **Appendix I:**

1. Critical Operations Shut Down Procedures and Personnel Assigned These Responsibilities
2. Work Unit Employee Lists
3. Listing of Individuals Requiring Evacuation Assistance

## **Appendix II:**

Building Evacuation Floor Plan

## **Appendix III:**

Evacuation Quick Reference Card

# The Pennsylvania State University

## Emergency Evacuation Plan

### Section I: Building and Personnel Information

Building Name: STUCKEMAN FAMILY BUILDING (0757-000)

Department Name(s): School of Architecture and Landscape Architecture; SALA Library; 2 General Purpose Computer Classrooms

Position	Name	Area of Responsibility	Phone Office	Office Address
Building/Department Emergency Coordinator	Jamie Behers	SALA	863-7927	125 Stuckeman Family Building
Alternate Building/Department Emergency Coordinator	Allan Sutley	SALA	865-2641	12 Stuckeman Family Building
Unit Safety Officer	Katie Rountree	College of A&A	777-6226	102A Borland Building
Unit Alternate Safety Officer	Gwen Miller Kelly Kaiserian	College of A&A Ctr. Perf. Arts	867-3122 865-4727	102 Borland Building B40 Eisenhower Aud.
Safety Monitor	Karen McNeal	SALA	865-9536	121 Stuckeman Family Building
Safety Monitor	Jennifer Howard	School of Architecture	863-2450	121 Stuckeman Family Building
Basement Safety Monitor	Allan Sutley Steve White	SALA	865-2641	12 Stuckeman Family Building
Floors 2,3,4 Safety Monitor	Studio Faculty Members	SALA		

Designated Meeting Site(s) for Building are: Palmer Plaza/Paws

Designated Areas of Refuge for the Building are: 2<sup>nd</sup> floor, 3<sup>rd</sup> floor, 4<sup>th</sup> floor – at faculty corridor window

Copies of this Evacuation Plan are kept in the following locations: 121 Stuckeman Family Building, 12 Stuckeman Family Building

Katie Rountree  
Signature of Plan Preparer

December 2015  
Date Prepared

## Section II: Emergency Phone Numbers

### **EMERGENCY (Police-Fire-Ambulance) 911**

University Police 814-863-1111

University Health Services 814-865-6556

Environmental Health and Safety (814) 865-6391

Physical Plant Work Reception Center 814-865-4731

## Section III: Purpose and Objectives

Potential emergencies such as fire, explosion, spill, chemical releases and all other emergencies may require employees to evacuate the building. An Emergency Evacuation Plan and adequate occupant familiarity with a building minimize threats to life and property. This Emergency Evacuation Plan is intended to communicate the policies and procedures for employees to follow in an emergency situation. This written plan should be made available, upon request, to employees and their designated representatives by the Building/Department Emergency Coordinator or the Unit Safety Officer for the building.

## Section IV: General Guidelines

The following guidelines apply to this Emergency Evacuation Plan:

- Stairwells are the primary means for evacuation. Elevators are to be used only when authorized by a fire or police officer.
- No employee is permitted to re-enter the building until advised by the Fire Department, PSU Police or EHS Representative.
- This Emergency Evacuation Plan will be coordinated with efforts in multiple-use buildings. Mutually beneficial agreements can be reached regarding Designated Meeting Sites and shelter in the event of inclement weather.

## Section V: Responsibilities of Building/Department Emergency Coordinator and Safety Monitors

All Designated Building Emergency Personnel shall retain a **RED** envelope to be kept in the front of their desk file drawer. The envelope shall contain: A copy of the building emergency evacuation plan, a package of disposable ear plugs, a listing of contact phones numbers including the cell phone numbers of the Building

**Emergency Coordinator, the Building Safety Monitors, and the College Safety Officer.**

**Upon the sounding of a fire alarm, each Building Emergency Personnel shall retrieve this envelope and carry it with them throughout their building check and bring it with them to the designated meeting site. In conjunction with the College Safety Office and their Building Emergency Coordinator, they should refresh the occupancy listing before the start of the Fall Semester and Spring Semester.**

**Notwithstanding, the following duties prevail:**

The Building/Department Emergency Coordinator is responsible for:

1. In conjunction with the unit Safety Officer, designating Safety Monitors and alternate Safety Monitors for specific work areas in the facility.
2. Overseeing the development, communication, implementation and maintenance of the Emergency Evacuation Plan.
3. Ensuring that floor plans and route evacuation maps are posted.
4. Ensuring the training of building occupants, Safety Monitors, and Critical Operations Personnel, and notifying all personnel of changes to the plan.
5. Maintaining up to date lists of building occupants for each Safety Monitor's area of coverage, Critical Operations Personnel, Listing of Individuals requiring Evacuation Assistance and any other personnel with assigned duties under this plan. Lists are included in Appendix I.
6. In the event of a fire or other emergency, relaying applicable information to emergency personnel, occupants and Safety Monitors.

The Safety Monitors are responsible for:

1. Familiarizing personnel with emergency procedures.
2. Acting as liaison between management and their work area.
3. Knowing where their Designated Meeting Site is and for communicating this information to occupants.
4. Ensuring that disabled persons and visitors are assisted in evacuating the building or moved to a predetermined staging area (Area of Refuge).
5. Performing responsibilities to ensure that all persons are accounted for during an evacuation as identified in Section X.
6. Evaluating and reporting problems to the Building/Department Emergency Coordinator after an emergency event.
7. Posting the "Building Evacuation Floor Plan" (Appendix II) in their work areas, communicating plan to occupants, and updating the plan annually.

**Section VI: Alerting or Signaling Building Occupants in Case of Fire or Other Emergency**

1. In case of a fire, employees should actuate the nearest fire alarm pull station and/or make a telephone call to 911. The locations of the fire alarm pull stations are noted on the Building Evacuation Floor Plans in Appendix II. The **[designate the type of audible alarm in use]**     Horn Strobe     alarm alerts building occupants of the need for evacuation and sends a signal to the PSU Police Dispatch Center that there is an alarm condition in the building.
2. It may be necessary to activate additional fire alarm pull stations, or verbally announce the alarm, if people are still in the building and the alarm has stopped sounding, or if the alarm does not sound. This should be done while exiting the building.
3. Persons discovering a **fire, smoky condition, or explosion** should pull the nearest fire alarm pull station. Any pertinent fire or rescue information should be conveyed to 911. All emergency telephone numbers are listed at the beginning of this Emergency Evacuation Plan.
4. To report all emergencies, employees should call 911. State your name, your location, and the nature of the call. Speak slowly and clearly. Wait for the dispatcher to hang up first. On occasion the dispatcher may need additional information or may provide you with additional instructions. Make this call from a safe location.

## **Section VII: Evacuation Procedures for Building Occupants**

1. When the fire alarm sounds, occupants should ensure that nearby personnel are aware of the emergency, quickly shutdown operating equipment (e.g., compressed gas cylinders), close doors (DO NOT LOCK) and exit the building using the established evacuation routes.
2. Occupants shall assist visitors, students and others who are not familiar with the plan to safely evacuate.
3. If you have been identified as having responsibility for Critical Operations Shutdown, refer to Section IX.
4. All occupants should proceed to their Designated Meeting Site and await further instructions from their Safety Monitor.
5. All personnel should know where primary and alternate exits are located, and be familiar with the various evacuation routes available. Floor plans with escape routes, alternate escape routes, exit locations and Designated Meeting Sites are located in Appendix II and are posted in the building.
6. Building occupants must NOT use elevators as an escape route in the event of a fire.

### **Notes and Precautions:**

- Portable fire extinguishers can be used for small fires. However, an immediate readiness to evacuate is essential.
- Never enter a room that is smoke filled.

- Before opening doors check to ensure it is not hot to the touch. If hot do not open. If warm open slowly to check room / hallway conditions.

## **Section VIII: Disabled Occupants**

Employees requiring assistance upon exiting are listed in Appendix I however there may be disabled visitors in the building that also require assistance. The Safety Monitor must identify individuals needing assistance, attempt to locate individuals to assist in the evacuation or in relocating to the Area of Refuge, and notify the emergency response personnel of the person's location. Transporting of disabled individuals up or down stairwells should be avoided until emergency response personnel have arrived. Unless imminent life-threatening conditions exist in the immediate area occupied by a non-ambulatory or disabled person, relocation of the individual should be limited to a safe area on the same floor, in close proximity to an evacuation stairwell. Within the room there should be provided a flashlight, towel for hanging out window or bright colored marker to mark windows that cannot be opened.

Penn State University Safety Policy SY02 “Handicapped Identification Decals for Individuals Requesting Assistance” is a voluntary procedure to provide visual identification of an employees work area for emergency responders and to provide PSU Police with information for prompt evacuation assistance.

## **Section IX: Critical Operations Shutdown**

Critical Operation Shutdown: Critical operations, including equipment that must be shut off and persons designated to complete these actions are identified in Appendix I. Procedures for rapid shutdown should be predetermined for life safety and loss control purposes, as well as ensuring complete evacuations in a timely manner. Individuals should never jeopardize their own health and safety to complete the Critical Operations Shutdown.

## **Section X: Accountability Procedures for Emergency Evacuation**

Once each evacuated group of employees has reached their Designated Meeting Site, each Safety Monitor shall:

1. Take head count of his or her group using the building occupant list for those employees in their area of coverage
2. Assume the role of department contact to answer questions
3. Instruct personnel to remain in area until further notice
4. Report status to Building/Department Emergency Coordinator or Incident Commander including persons who are located in the Area of Refuge or have remained behind for Critical Operations Shutdown.

## **Section XI: Rescue and Medical Duties**

The Fire Department and University Police will conduct all rescue and medical duties and/or will coordinate with Emergency Medical Services.

## **Section XII: Training and Communications**

The Building/Department Emergency Coordinator is responsible to ensure that all personnel are trained in safe evacuation procedures. Refresher training is required whenever the employee's responsibilities or designated actions under the plan change, and whenever the plan itself is changed.

The training shall include:

- The plan's purpose,
- Preferred means of reporting fires and other emergencies,
- The type of building alarm system,
- Emergency evacuation procedures and route assignments, including procedures for those unable to evacuate themselves,
- Procedures to be followed by employees who remain to control Critical Operations Shutdown before they evacuate,
- Procedures to account for all employees after emergency evacuation has been completed, and
- Who performs rescue and medical duties
- The training shall include use of the floor plans and evacuation routes given in Appendix II of the Emergency Evacuation Plan.

Training on the Emergency Evacuation Plan can be performed during events such as work unit new employee orientation, employee briefings, discussions at faculty/staff meetings, internal work unit newsletters and emails, etc.

It is suggested that drills be conducted annually. EHS is available to assist with tools for training building occupants in the Emergency Evacuation Plan as well as evacuation drills.

Work units may also choose to provide Evacuation Quick Reference Cards for employees. These cards provide essential information on emergency contacts and designated meeting sites. A sample card is provided in Appendix III and can be customized as needed.



# **Appendix I**

## **1. Critical Operations Shut Down Procedures and Personnel Assigned These Responsibilities**

### **Provide the following information:**

- Critical Operation – Shutdown power in Shop
- Required Shutdown - hit emergency plunger
- Name - Allan Sutley or Steve White
- Job Title – Shop Supervisor
- Work Area – Room 12

## **2. Work Unit Employee Lists**

See page 9

## **3. Listing of Individuals Requiring Evacuation Assistance**

### **Provide the following information:**

- Name
- Work Area
- Special Needs/Concerns

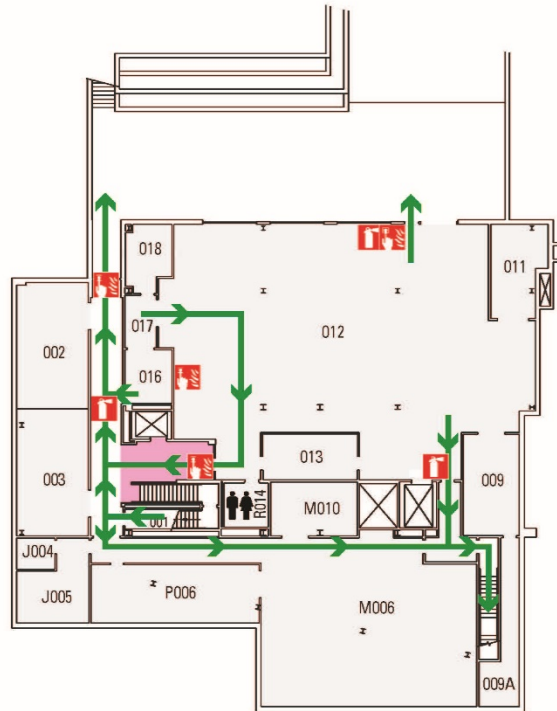
<b>Room</b>	<b>Name</b>
424	Abbas, Yasmine
228	Aeschbacher, Peter
331	Aviles, Pep
327	Aviles, Reggie
230	Belcher, Nathaniel
318	Braasch, Cathy
121	Bumgarner, Nina
424	Celma, Laia
127	Choo, Phil
329	Cole, Andy
231	Cooper, James
332	Costanzo, Denise
418	Davis, Felecia
150	Duarte, Jose
427	DuRussel, Lisa
227	Echols, Stuart
419	Flohr, Travis
226	Goldberg, David
319	Gorby, Christine
432	Gorenflo, Larry
425	Groenendaal, Denson
220	Gursoy Toykoc, Benay
121	Hadighi, Mehrdad
002	Heilman, Jameson
328	Henn, Rebecca
105	Hamer Center
121	Howard, Jennifer
426	Iulo, Lisa
425	Jones, Dan
430	Kang, Mihyun
324	Kalisperis, Loukas
322	Kalsbeek, James
147	Kalsmith, Janejira
124	Kucker, Patricia
219	Li, Dan
24B	Lim, Huiwon
421	Lindberg, Darla
229	Mainzer, Stephen

<b>Room</b>	<b>Name</b>
427	Marriott, Dan
121	McNeal, Karen
149	Meehan, Daniel
321	Miller, Marc
108	Movahedi-Lankarani, Stephanie
325	Muramoto, Katsuhiko
222	Nazarian, Shadi
121	Nolten, Diana
218	Osseo-Asare, DK
121	Behers, Jamie
109	Peterson, Rob
108	Pisciotta, Henry
429	Poerschke, Ute
122	Quinn, Erica
420	Ribot, Almudena
121	Robison, Courtney
225	Ruescas, Juan
111	SALA Library Desk
420	Saltarella, Michael
219	Sayre, Paul
224	Shaffer, Marcus
326	Spangler, Alec
320	Staub, Alexandra
422	Sutherland, Eric
013	Sutley, Allan
431	Szczygiel, Bonj
428	Tamminga, Kenneth
147	Wertz, Pamela
418	Washesky, Lee
232	Weinreb, Ross
013	White, Steve
330	Willis, Daniel
319	Woollen, Malcolm
221	Wu, Hong
326	Yahner, Tom

# Appendix II

## Building Evacuation Floor Plan

### EVACUATION ROUTE



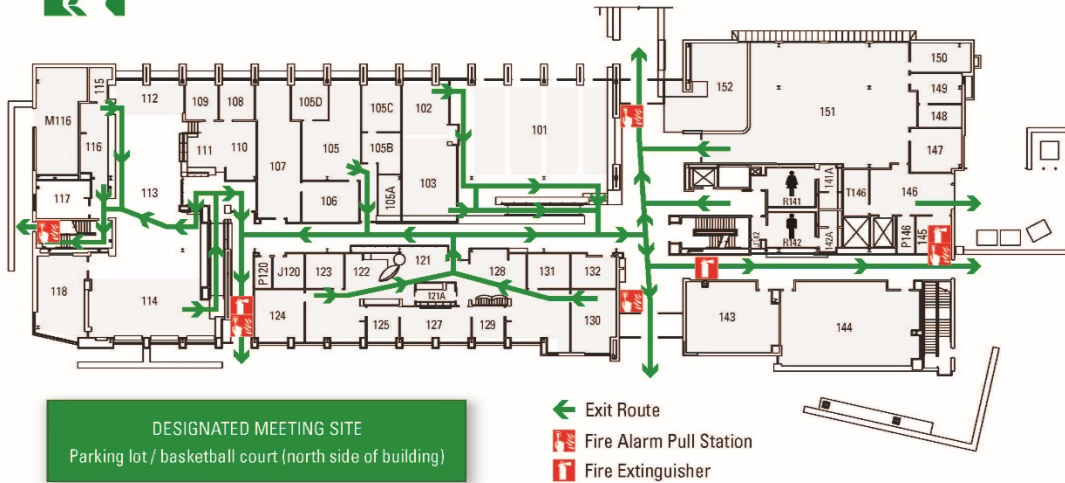
- ← Exit Route
- 🚨 Fire Alarm Pull Station
- 🧯 Fire Extinguisher
- 👤 Assisted Evacuation Staging Area

DESIGNATED MEETING SITE  
Parking lot / basketball court (north side of building)

### PENNSSTATE Stuckeman Family Building - Basement



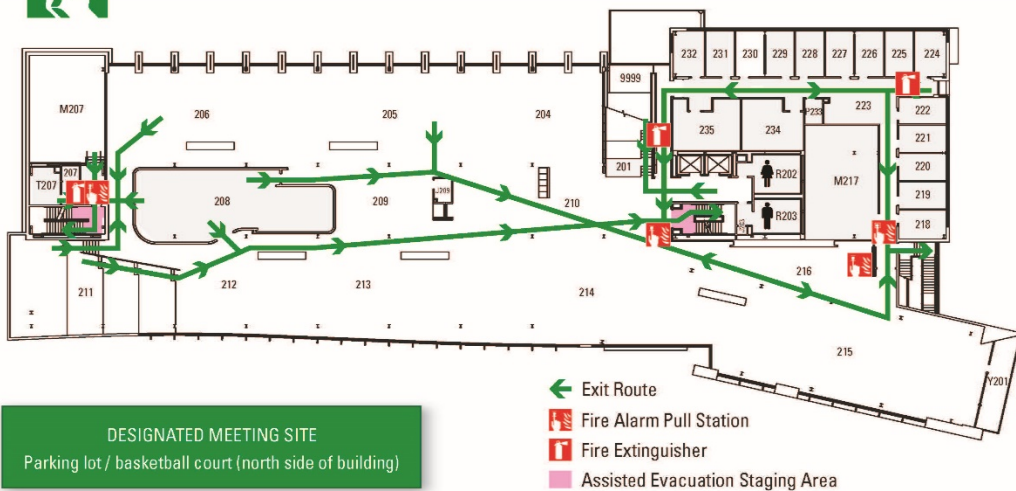
# EVACUATION ROUTE



## Stuckeman Family Building - 1st Floor



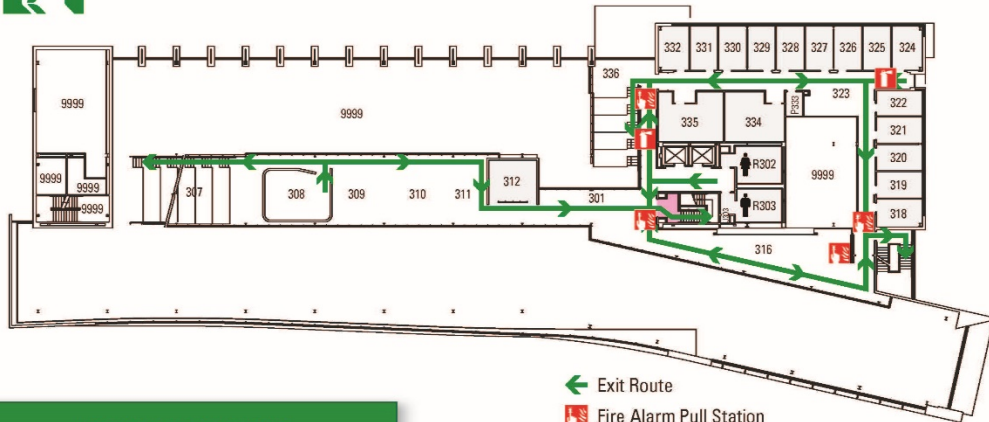
# EVACUATION ROUTE



## Stuckeman Family Building - 2nd Floor



# EVACUATION ROUTE



**DESIGNATED MEETING SITE**  
Parking lot / basketball court (north side of building)

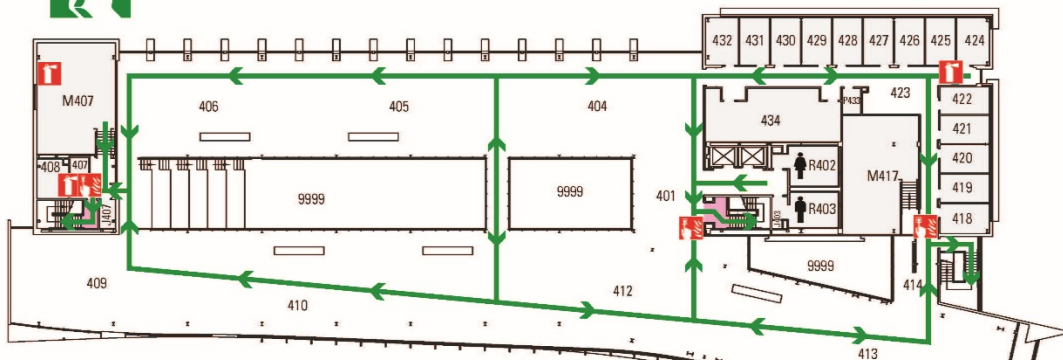
- ← Exit Route
- Fire Alarm Pull Station
- Fire Extinguisher
- Assisted Evacuation Staging Area



# Stuckeman Family Building - 3rd Floor



# EVACUATION ROUTE



**DESIGNATED MEETING SITE**  
Parking lot / basketball court (north side of building)

- ← Exit Route
- Fire Alarm Pull Station
- Fire Extinguisher
- Assisted Evacuation Staging Area



# Stuckeman Family Building - 4th Floor

# Appendix III

## Evacuation Quick Reference Card

(Sample)

<p><b>Emergency Contacts:</b> 911 (Police- Fire –Ambulance) University Police: 863-1111 Environmental Health and Safety: 865-6391 OPP Work Reception Center: 865-4731</p> <p><b>Evacuation Contacts:</b> Bldg / Dept Emergency Coordinator: _____</p> <p>Safety Monitor: _____</p>
------------------------------------------------------------------------------------------------------------------------------------------------------------------------------------------------------------------------------------------------------------------------------------------------------------

<p><b><u>Work Unit Name</u></b> Evacuation Quick Reference</p> <ul style="list-style-type: none"><li>- Quickly exit in a calm manner.</li><li>- Close doors – <b>Do Not</b> lock</li><li>- Assist visitors to evacuate</li><li>- <b>Do Not</b> use elevators</li><li>- Report to designated meeting site</li><li>- <b>Do Not</b> reenter the building until advised by emergency personnel or safety monitor</li></ul> <p><b><u>Building Name</u></b> designated meeting site:</p>
----------------------------------------------------------------------------------------------------------------------------------------------------------------------------------------------------------------------------------------------------------------------------------------------------------------------------------------------------------------------------------------------------------------------------------------------------------------------------------------