

Google Earth exercise

Winthrop Elementary School

November 15, 2019



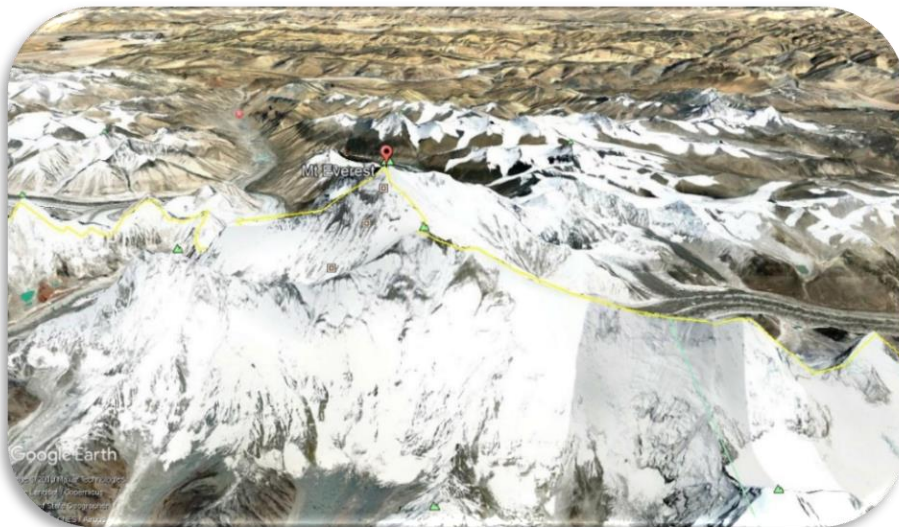
Lekan Sodeinde and Marshall Pontrelli



The Blue Marble, one of the most famous photos taken of the earth. It was taken on December 7, 1972 by the crew of Apollo 17.

Part 1: Mt. Everest

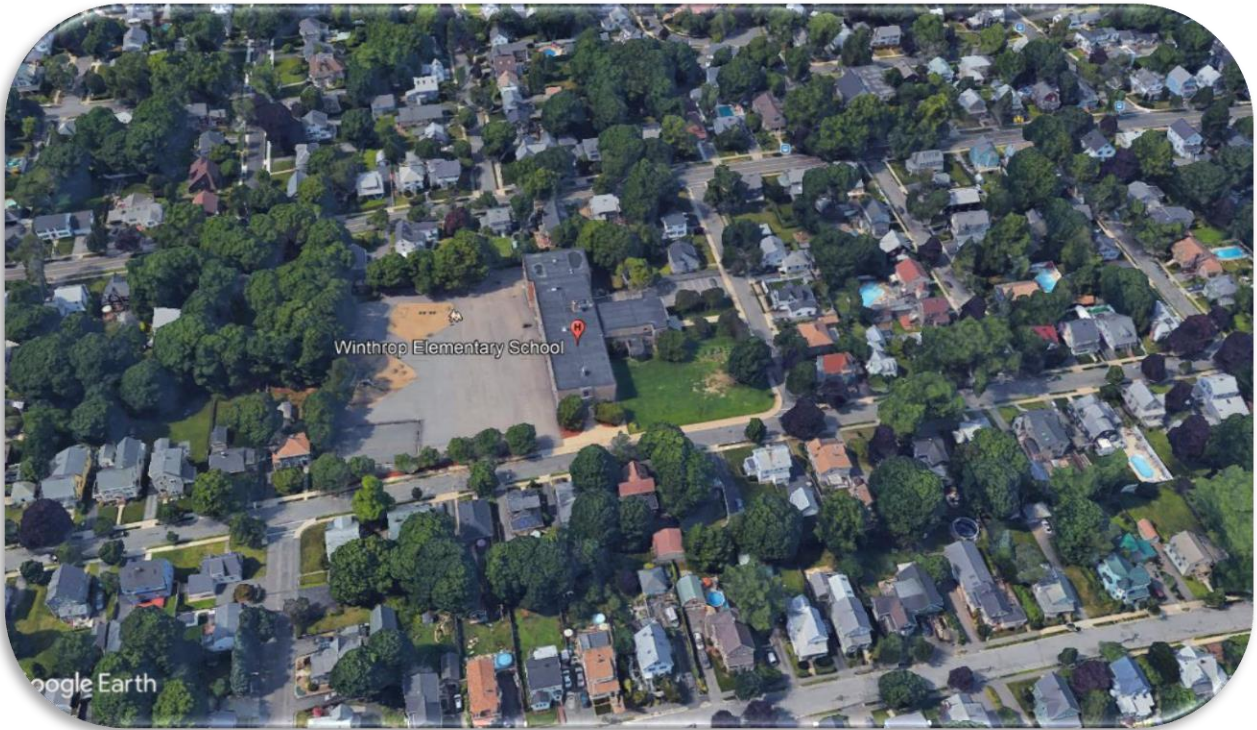
- 1) In the search bar, type in “Asia”. Watch Google Earth zoom in on the largest continent in the world.
- 2) Delete the word “Asia” and type in the “Nepal”. Nepal is a country in Asia. Does it look like there are mountains in Nepal? Forests? What is the white stuff?
- 3) Delete “Nepal” and type in “Mt. Everest”. Mt. Everest is the tallest mountain in the world. Can you tell what the white stuff is now?
- 4) Delete “Mt. Everest” and scroll out so the whole earth is on your screen.



Mt. Everest image on Google Earth. To make your screen look like this, click Shift + the down arrow.

Part 2: Winthrop Elementary School

- 1) Type in “North America”. North America is the continent where you live.
- 2) Delete “North America” and type in “United States”. There are 50 states in the United States, which one do you, your classmates and I live in?
- 3) That’s right! Massachusetts. Type Massachusetts into the search bar. Do you know what ocean is to the east (right) of Massachusetts?
- 4) Now we’re getting closer to our home. Type in “Melrose” and watch Google Earth zoom in. Where in Massachusetts do you live?
- 5) Let’s find this school. Type in “Winthrop Elementary school” into the search bar. You’ve found your location on a digital map! Scroll around the screen to see if you can find this classroom’s window. To spin around, press “Shift + Enter”, to zoom, press “+”



Winthrop Elementary school on Google Earth

Part 3: Amazon River delta (If we have time)

- 1) Type “Amazon river” into the search bar. The Amazon river has more water in it than any other river in the world.
- 2) Zoom in by scrolling on your keypad to the river.
- 3) Now, follow the river until you reach the ocean by dragging across your screen. Which ocean is this?



The Amazon River in Google Earth. You can zoom in and scroll along the length of the river. See how it twists and turns!

Tips

- 1) You can zoom in and out by scrolling on your keypad.
- 2) To orient “north” up on your screen, click “n”.

Other things you can search

Oceans

- Arctic Ocean
- Atlantic Ocean
- Indian Ocean
- Pacific Ocean
- Southern Ocean

Rivers

- The Mississippi
- Amazon
- Volga
- Yangtze
- Nile

Mountains

- Andes
- Alps
- Himalayas
- Mt. Everest
- Mt. McKinley (Mt. Denali)
- Rocky Mountains