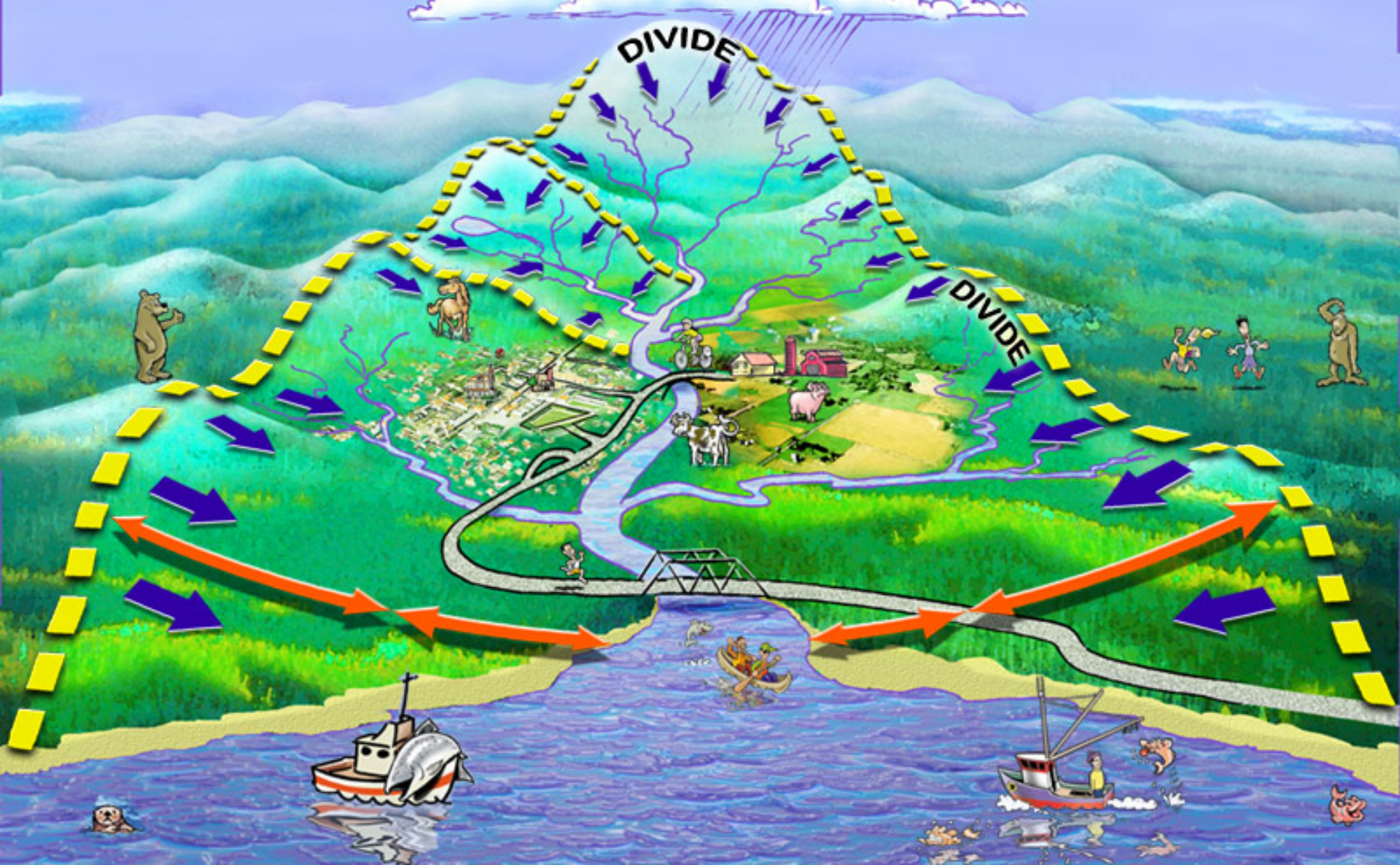
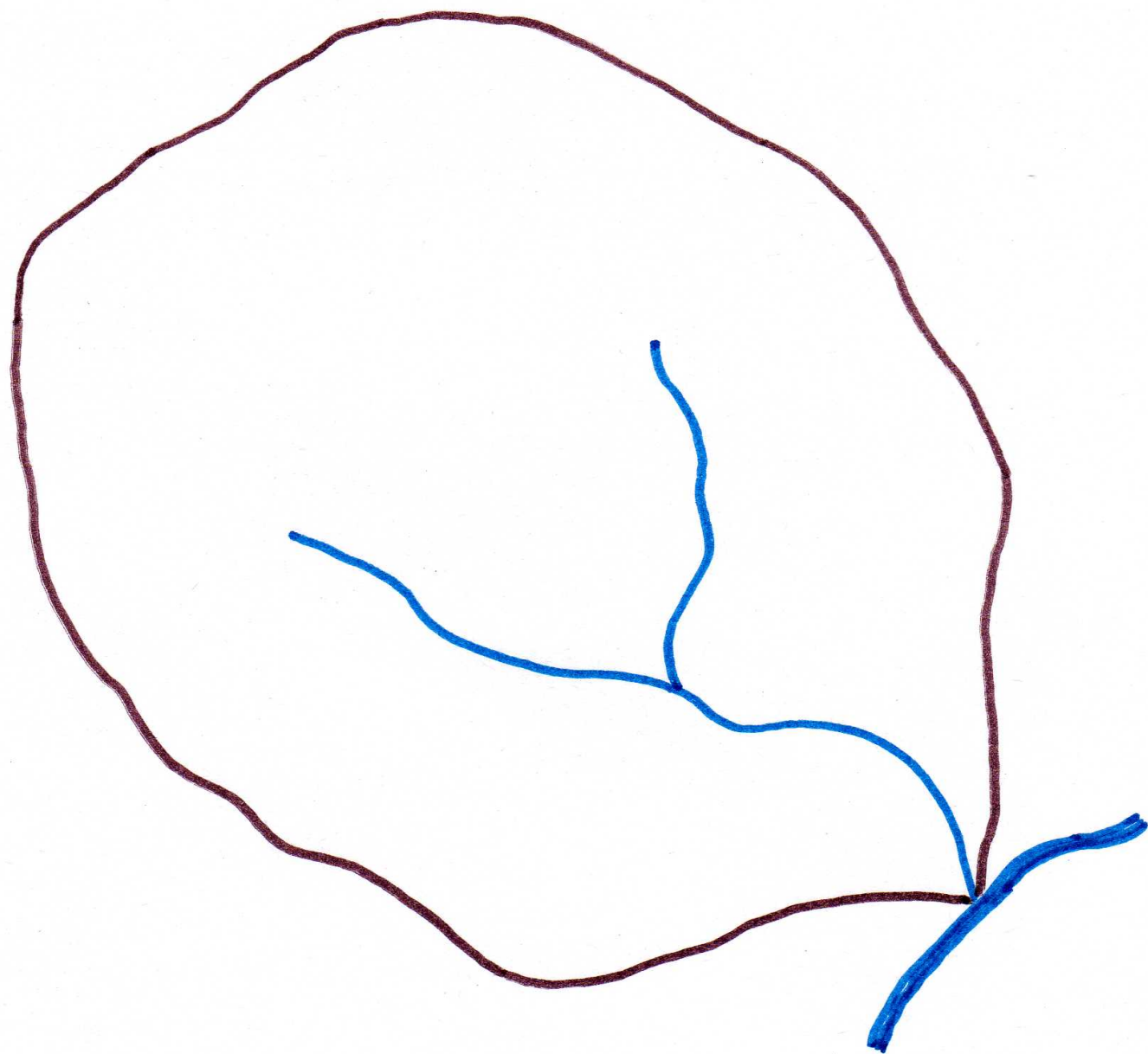


A Watershed

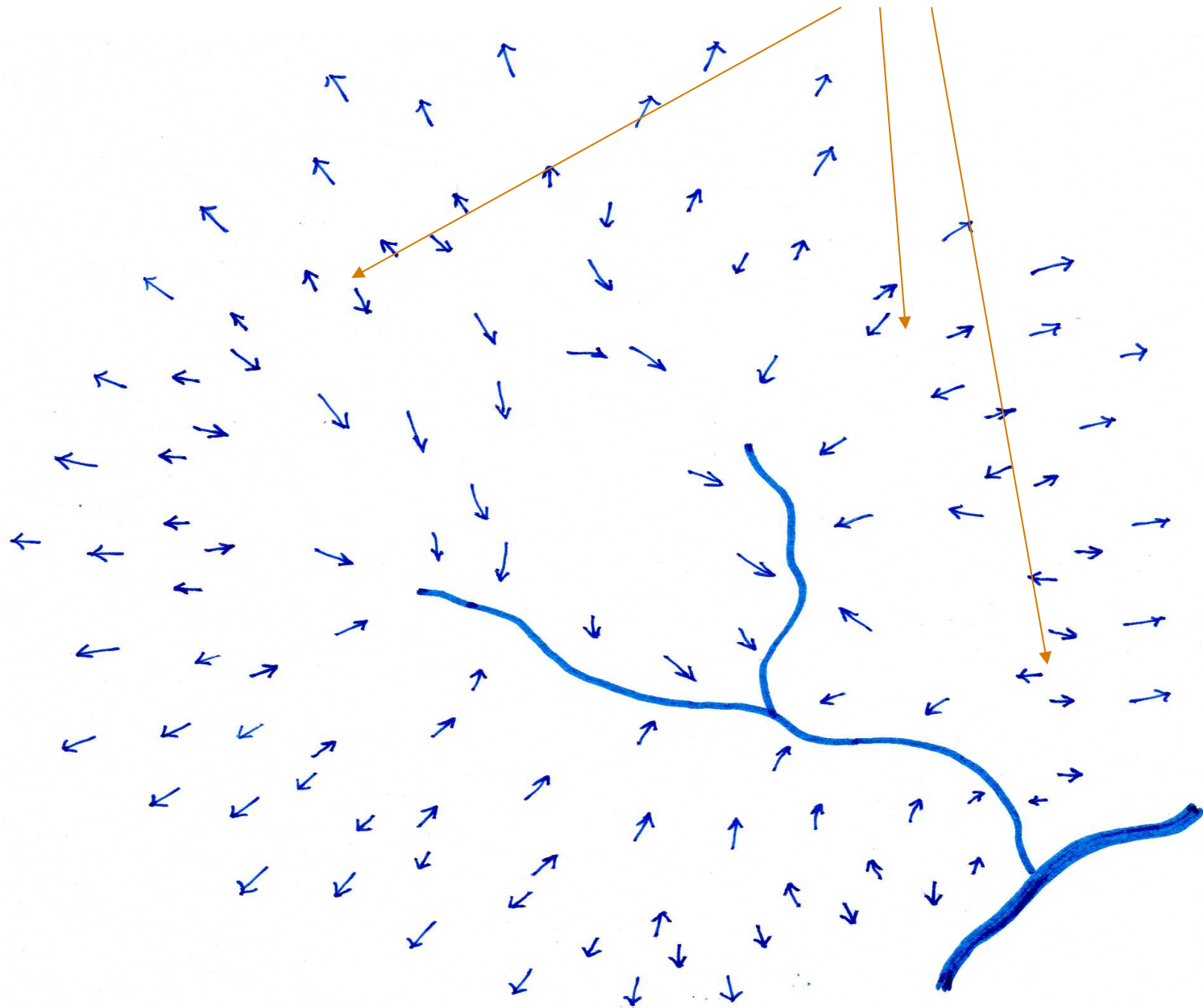


Vocabulary

- Watershed
- Groundwater
- Surface water
- Water table
- Drainage Basin
- Aquifer
- Tributary

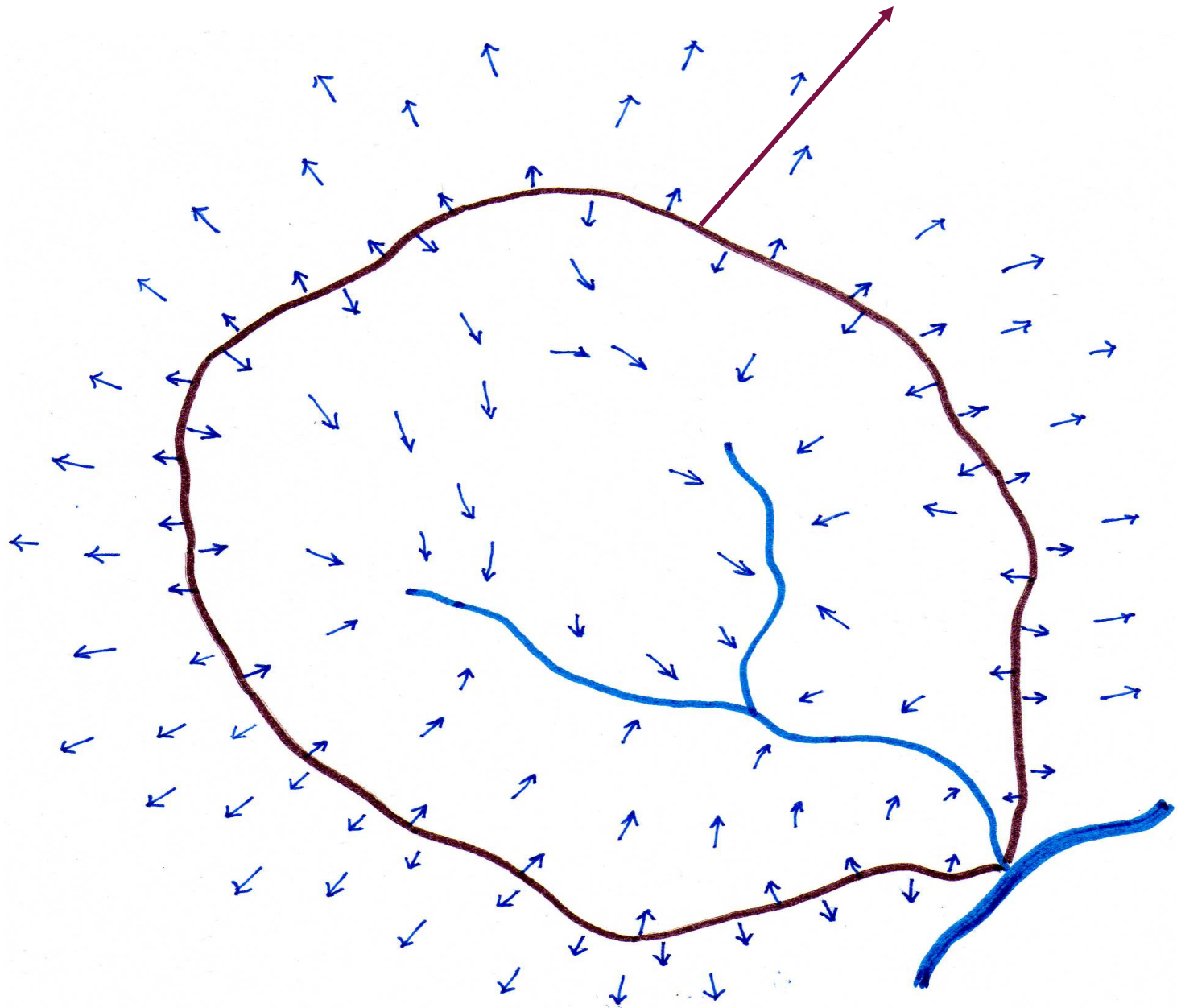


an imaginary line dividing the flow directions is passing through these points



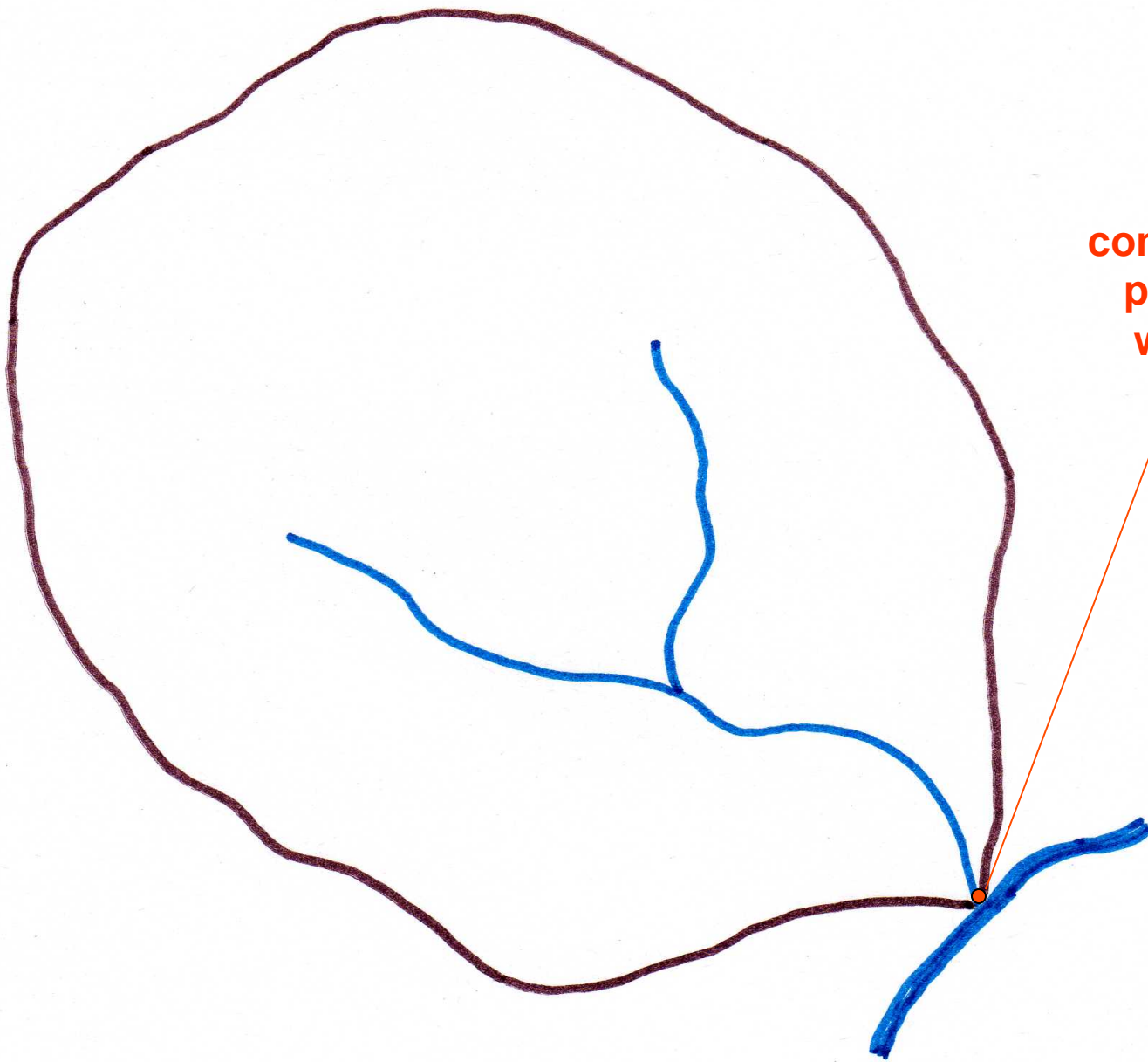
drainage map of the area

the divide line of a drainage area



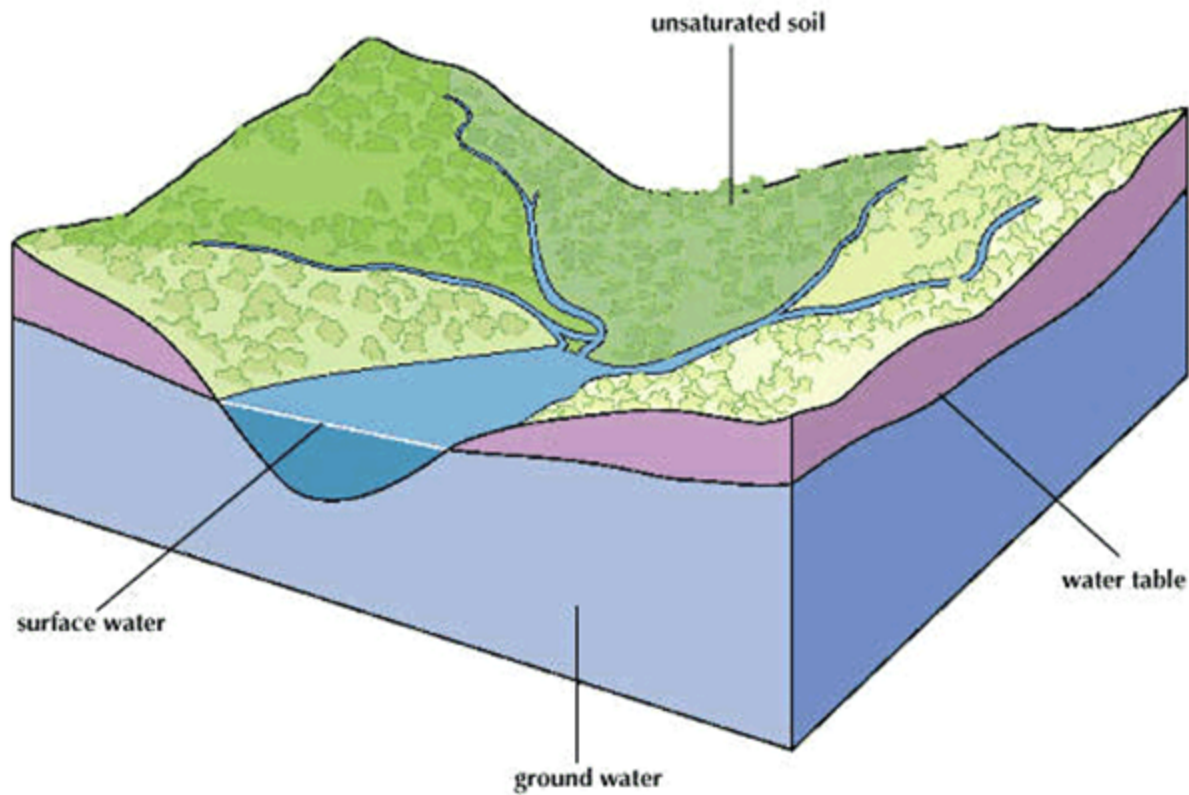
Watershed: the drainage area that contributes water to a lake, stream or river



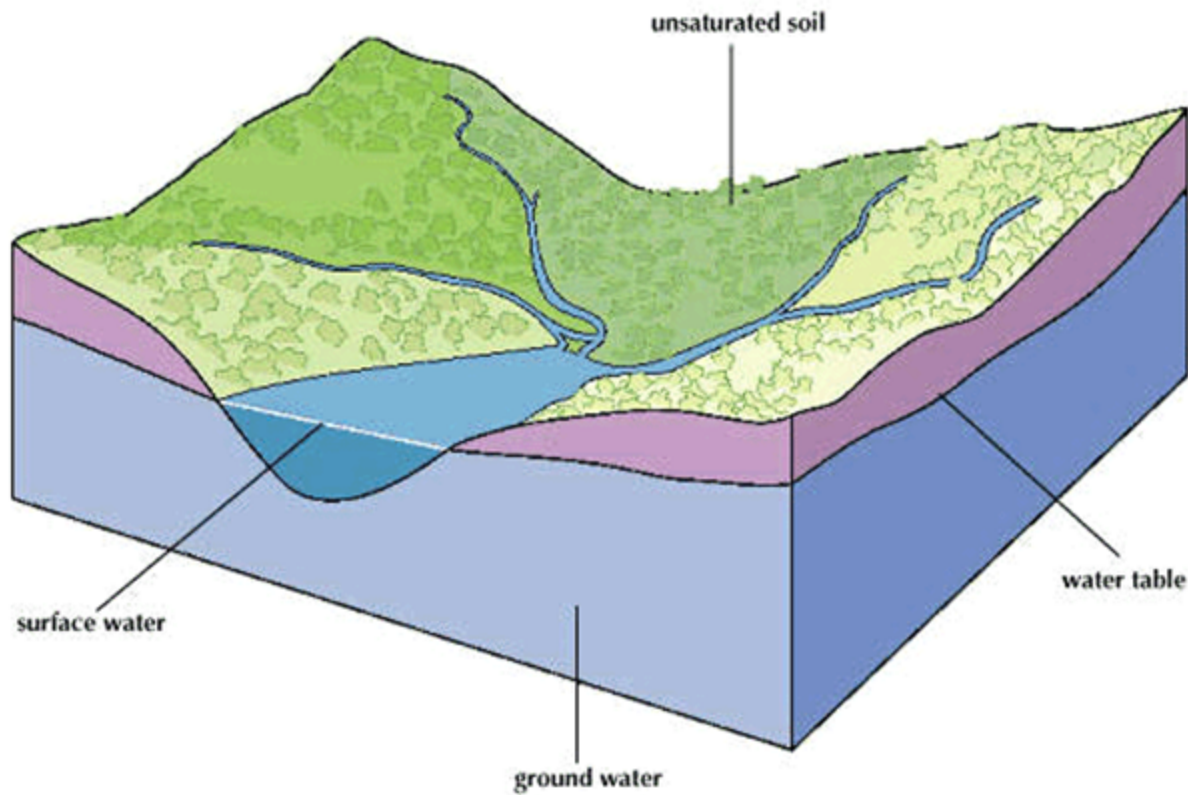


**common outlet
point of the
watershed**

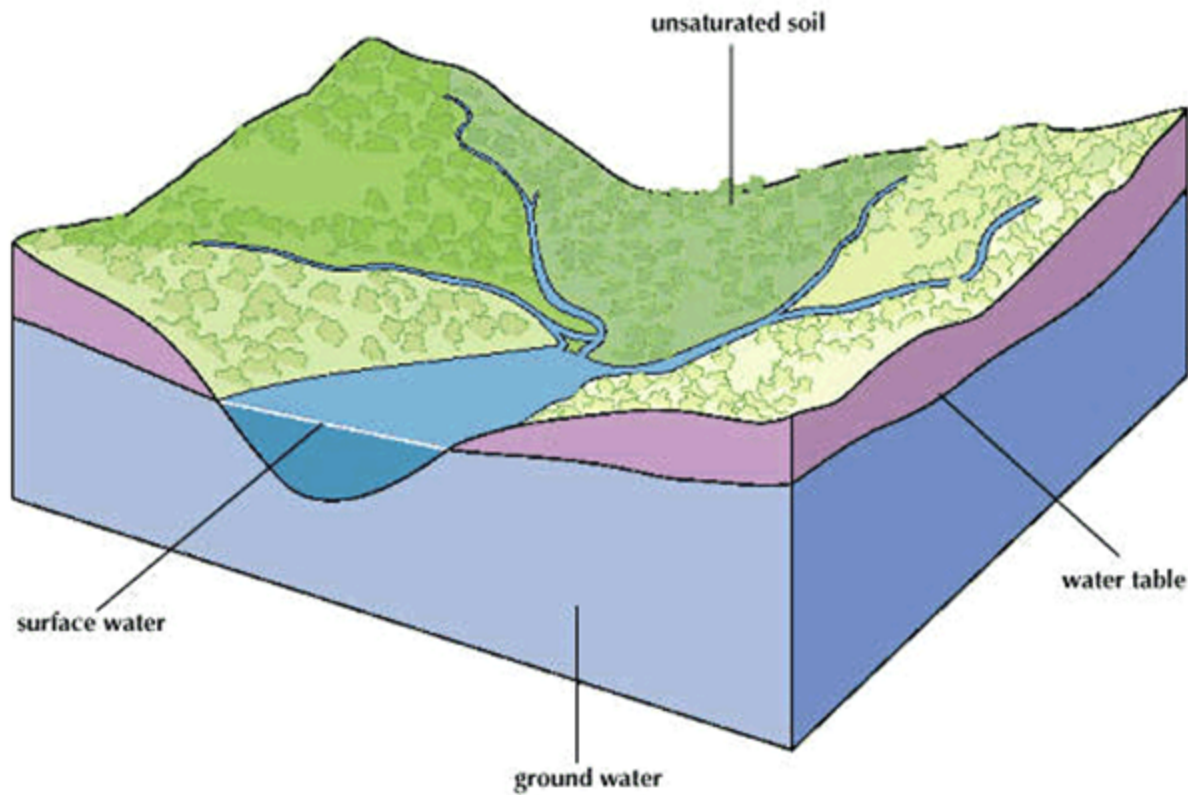
- Groundwater:
 - Water beneath the surface (underground)



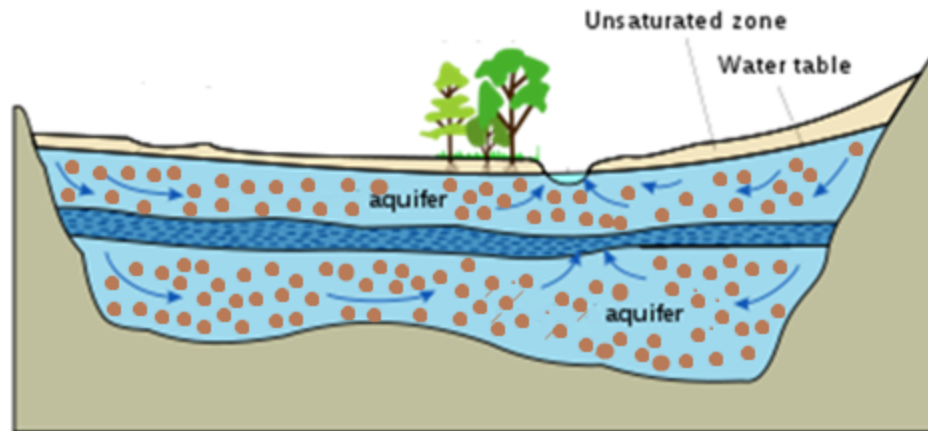
- Surface water:
 - Water above the surface (you can see it!)



- Water table:
 - The water level. This can be above or below ground.



- **Aquifer:**
 - Layer of material underground that holds water



Rocks



Sand

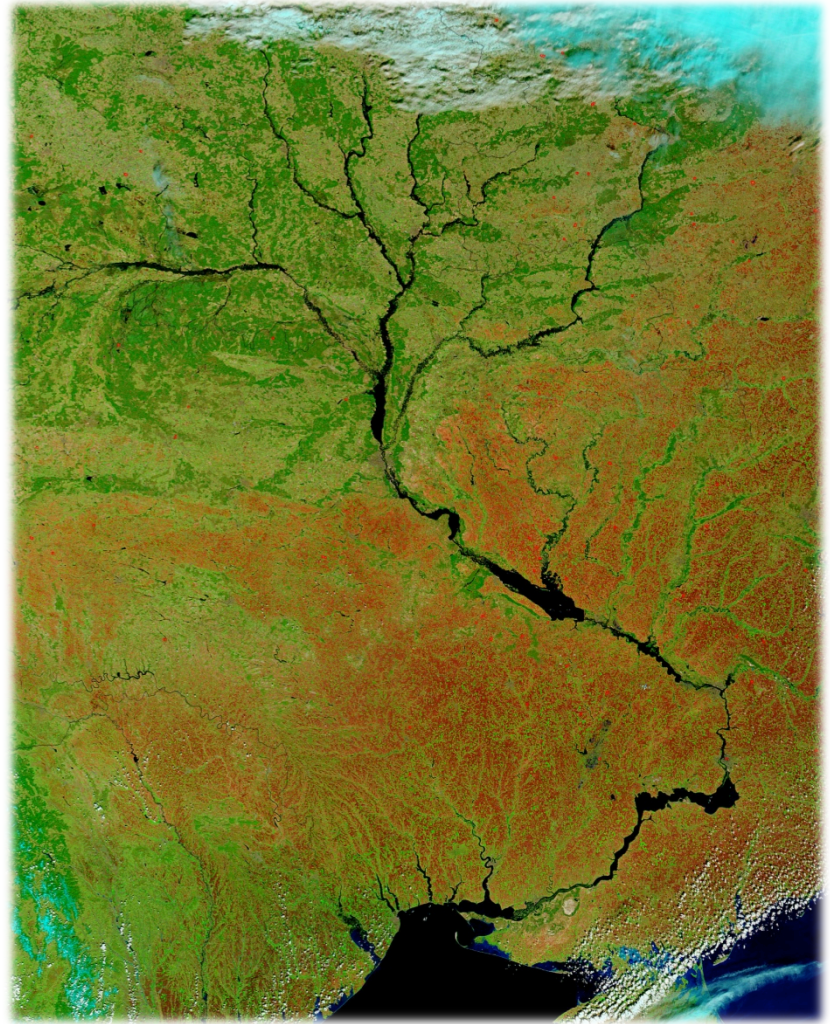


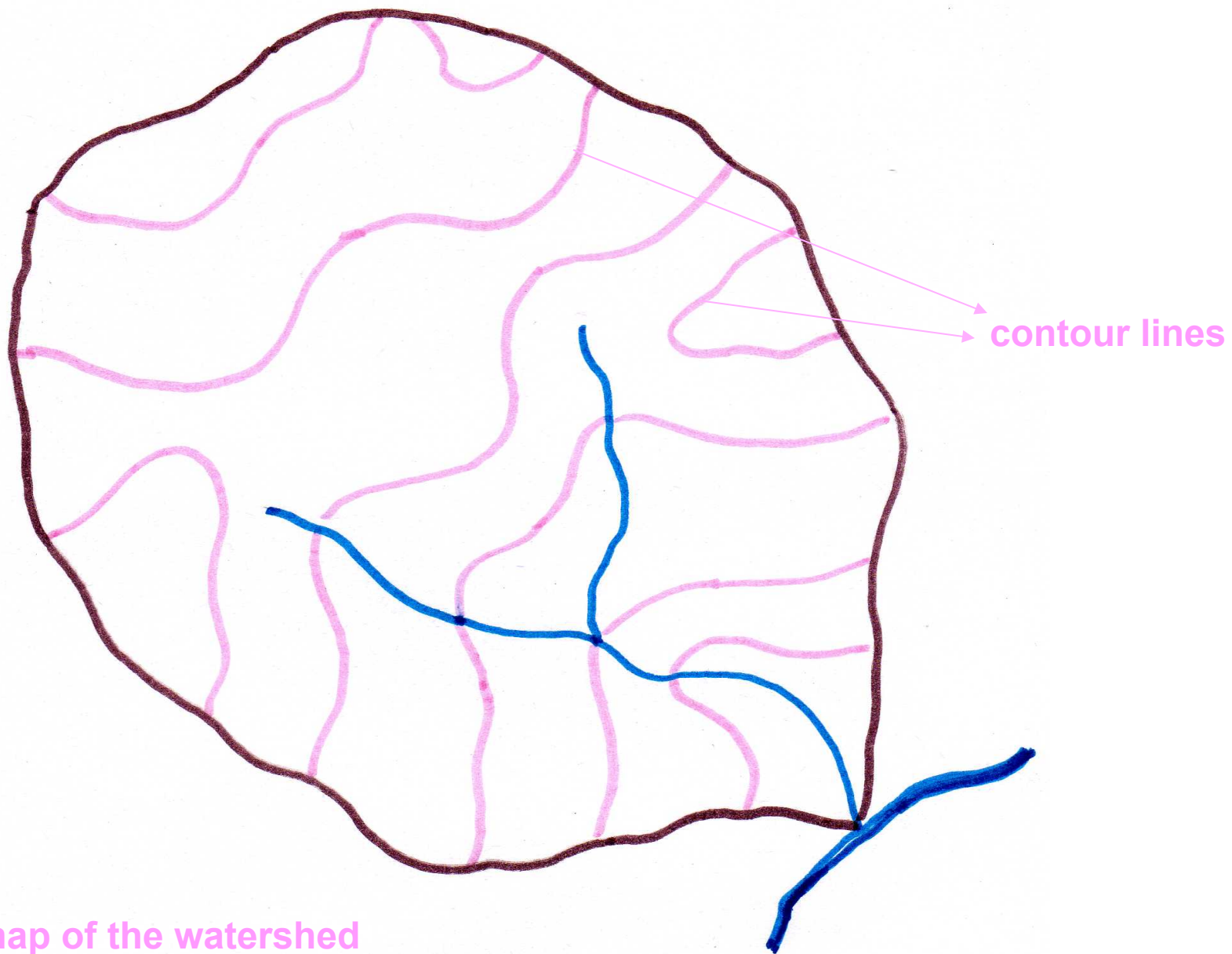
Clay



Direction of ground-water flow

- Tributaries:
 - All of the small streams that flow into a larger body of water





contour map of the watershed

