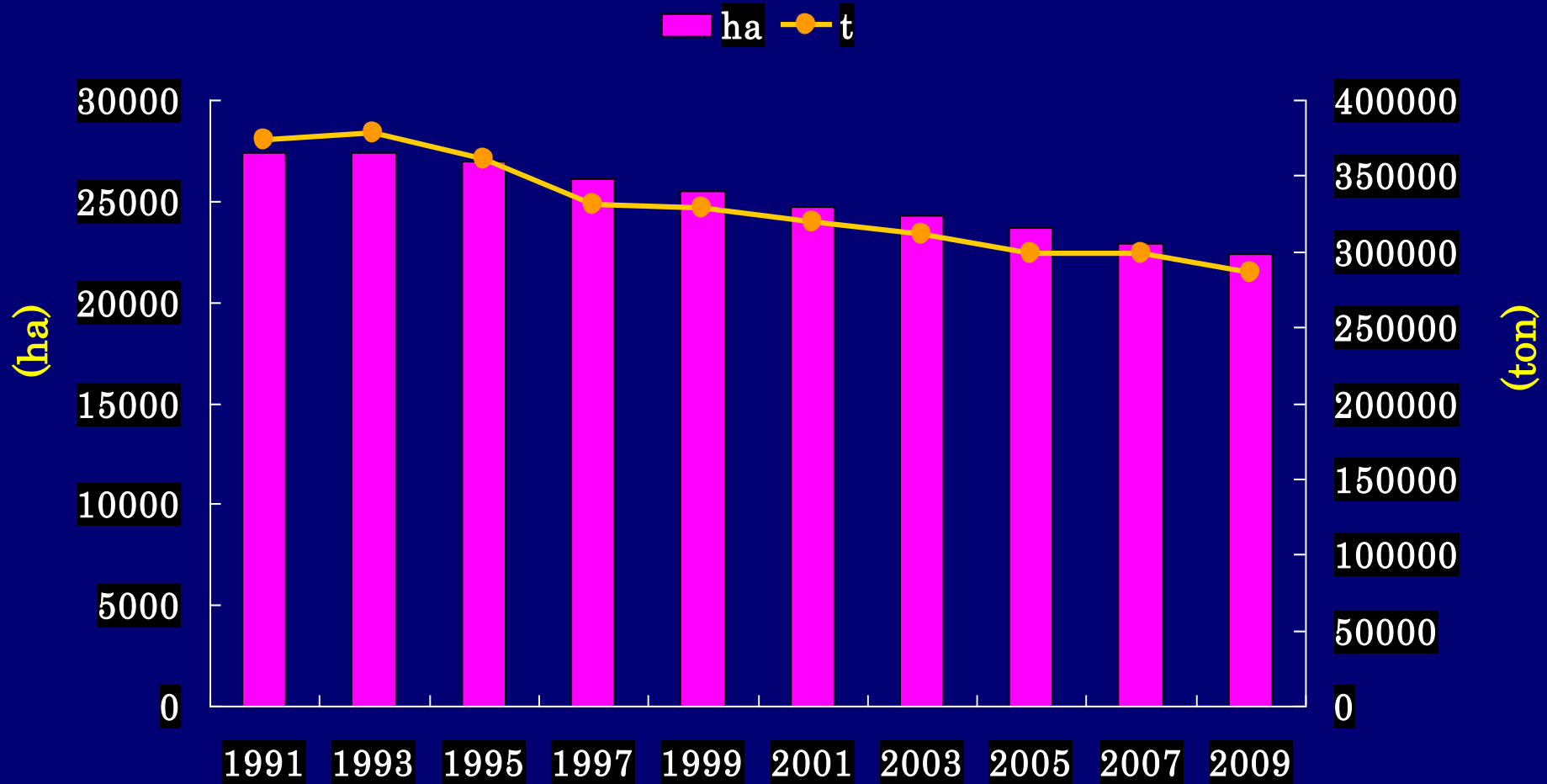


Current Spinach production and distribution in Japan

Margaret Savage
Ryo Kimura

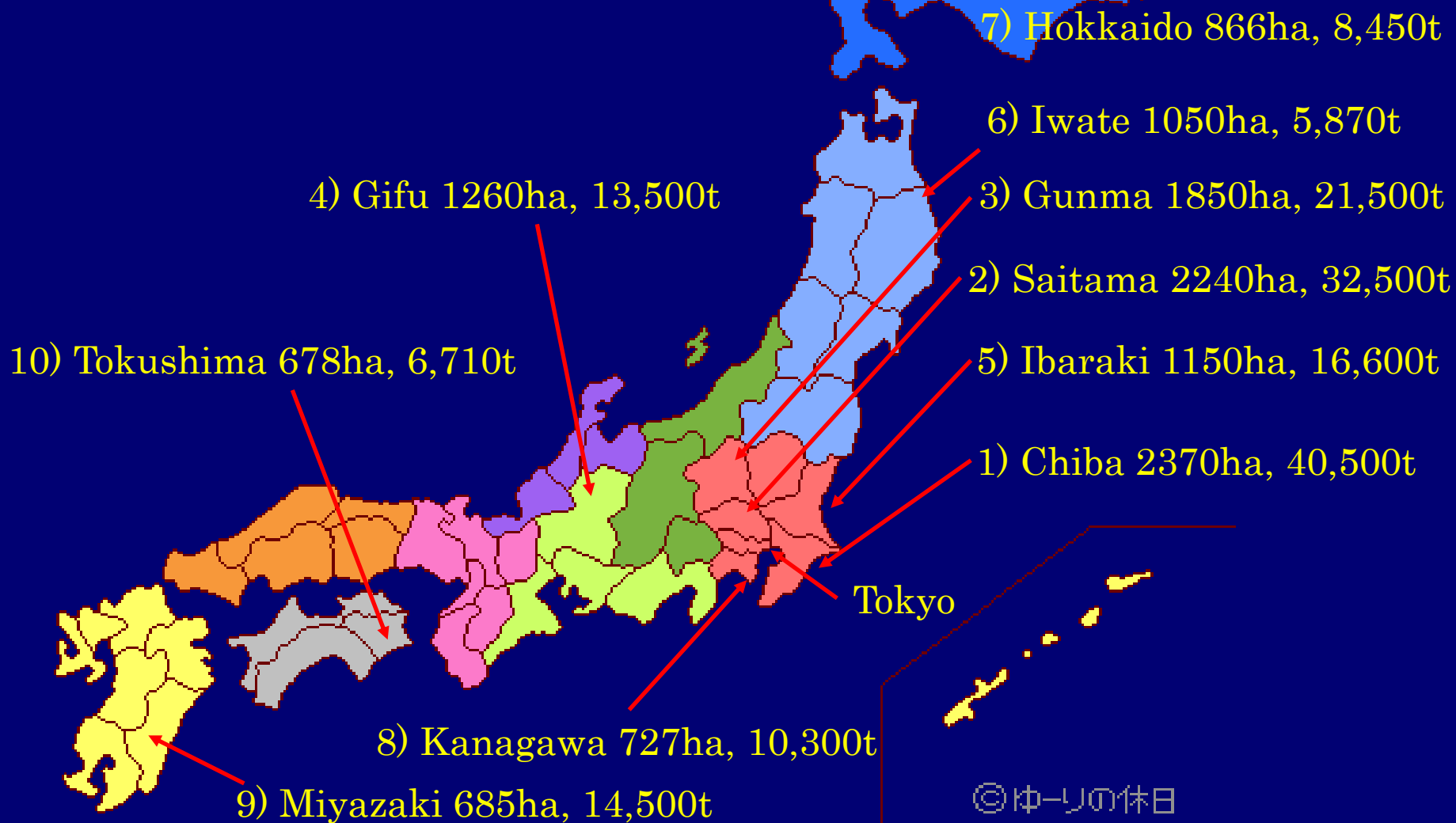
Spinach Production in Japan



Based on the statistics of MAFF

Top 10 Prefectures of Spinach Production

~22,400 ha, and 286,300 ton in 2009~



Spinach Field (Chiba)



Growing on Mulch with Small Plastic Tunnel (Saitama)



Post Rice Harvest (Tokushima)



Example of water damage plus virus

Spinach in Plastic House in Summer (Gifu)



Harvesting by Hand



Measuring and packaging

Harvesting by sickle

Finished Product



Bunched Spinach



Sowing Machine (Vacuum Planter)



Harvesting Machine



Preparing and Weighting



200g bunch

Packaging



Ready for shipment



Frozen Spinach in Japan



200g bag

Frozen Spinach production in Japan



Spinach for Processing (Miyazaki)

