

*Newsletter for the
Arkansas Academy of Industrial Engineering
Of the University of Arkansas
Industrial Engineering Department*

The Dodecahedron



Special 2011 Edition

ARKANSAS ACADEMY OF INDUSTRIAL ENGINEERING



CELEBRATES

25 YEARS OF DEDICATED SERVICE

TO

THE UNIVERSITY OF ARKANSAS
DEPARTMENT OF INDUSTRIAL ENGINEERING

*25 Years of Growth...
Renewing the Spirit*

WHAT IS IT?



(Answer on Page 12)

Inside This Issue

Note from the President	2
From the Department	3
Past Presidents	4
In Remembrance	6
Scholarship News	7
Membership Committee	8
From the Editor	9
Member in the News	9
Membership	
Demographics	10
Golf Tournament	11
Golf Shirt Order Form	12
. . and more	

The AAIE Board of
Directors and Officers
for 2010-2011:

President
Lee Hartz

President-Elect
Grant DuCote

Secretary
Bryan Grimsley

Treasurer
Jim Burgin

Past President
Melinda Faubel

A NOTE FROM THE PRESIDENT . . .

We have crossed not just decades and centuries, but millennia boundaries since the Academy began. Taking a few minutes to think back over a quarter century, I am struck by the pace and nature of events that have so drastically reshaped our lives.

The Fall of the Berlin Wall (11/9/1989) and the Breakup of the USSR (12/8/1991)

The “Cold War” and the threat of nuclear escalation were laid to rest in the same casket that held the bones of the USSR. After seventy-four years of enforced membership, the federation was dismantled and the world lost its fear of the massive bear. The structured dissolution could not be called peaceful as the resultant ethnic civil wars ravaged a great many people.

The Game Boy - 1989

Portability comes to the video market. No longer tethered to a wired controller and game box, video playing youth can pursue the further development of thumb and finger agility at any locale. It was not long before games became an option on phones with video screens, ensuring that we need never have a moment spent in reflective thought.

The Beatles Diminish - 11/29/2001

George Harrison dies of cancer at the age of fifty-eight, and the Beatles now have lost half their members. For those that came of age during the Beatle years, the loss of John and later George are harbingers of the mortality of us all.

The Destruction of 9/11/01

Life as we knew it changed on that day. The idea that people from other countries, other ideologies, and other faiths wanted to see everyday Americans dead shook us mightily. We are mostly accustomed to the inconvenience that now inhibits our travel, but we can no more go back to the way we were than the egg can be “un-cracked,”

The Internet - 1991-1992

The origins of the internet began as long ago as 1962 in response to fears that a Soviet attack could render the domestic telephone network useless. Scientists suggested that communications between computers could offer a failsafe. It was in 1991 that the World Wide Web (www) was introduced, and in 1992 that the first web browser, Mosaic, was created. The knowledge of the world has become ever more accessible to anyone with an internet connection.

No doubt we could offer up many other events that have personal or world-wide significance to match the short list above. Yet, I believe it is what we do in between the great events that define us personally. It is the drive to rise each day and tend to our small portion of the world, in spite of what is happening on the world stage.

— Lee Hartz '78



FROM THE DEPARTMENT

Dear Academy Members,

Hello! Despite the unusually harsh winter (for example, a record-breaking 20 inches of snow in Fayetteville during the second week in February), spring is just around the corner. That means we will be marking the end of another academic year including joining together at the upcoming AAIE banquet to mark an extra-special milestone – our 25th Anniversary celebration! As we reflect as a department over the last 25 years, there is just no better way to put it other than to say that a lot has happened since 1986 when the Academy was formed. Groundwork for the Academy really began with the department's formation led by the capable leadership of Dr. John Imhoff who worked tirelessly to build a strong department through developing a rigorous academic program together with forging strong relationships with students and alumni. In 1980, Dr. Imhoff turned over the reign to Dr. Bob Emerson who continued to build on Dr. Imhoff's legacy and was instrumental in laying the groundwork for the Academy. Dr. Rick Malstrom later catapulted this effort by working closely with the Academy for nearly 15 years developing many of the initiatives and traditions which we hold so dear in our hearts. One of our fondest traditions is the *Red Coat Society* which Dr. Malstrom started by offering a red blazer as a token of gratitude to the outgoing AAIE president. The red jacket was chosen because of the prestige associated with it as it was previously only given to department heads by the Dean of Engineering to be worn at official functions. Dr. Malstrom said some of his friends in AAIE remarked several times about the jacket he wore. He said since they "coveted" his red coat he would begin the tradition of presenting a red coat to the outgoing president at the April meeting. In 2000, the department was faced with weathering the heartache of the untimely passing of Dr. Malstrom. At this point, Dr. John English stepped to the helm of leading the department through yet another new era of improvement. It is my privilege and honor to follow in the footsteps of such a great group of leaders as we get ready to begin on our next 25 year partnership.



As we reflect on a few of the important changes in the department during the past 25 years, several of those which are more notable include: Growing support from the Academy through increases in AAIE scholarships awarded to students, implementation of an Outstanding Faculty Award and two Staff Awards. Continual improvement in the departmental stature as measured by the US News & World Report rankings, increased faculty research expenditures, creation of endowed faculty chairs and professorships to recruit and retain the best and brightest faculty, and efforts to recruit and educate talented students; growing number of national awards and recognition received by our talented faculty and students; significant growth in our graduate program through a healthy and growing Ph.D. program and within our Operations Management Program (which more than doubled in size during the past 35 years; and development of a common Freshmen Engineering Program which began in 2007 with an aim toward improving retention rates and streamlining operations.

Now, getting on with departmental news, we are pleased to report that the department is in the midst of a hiring process for a new Assistant Professor. Over 80 applications were received for this position and we hope to conclude the process by the end of March. Several faculty recently attended the IEEE Reliability Maintainability Symposium (RAMS). Dr. Richard Cassady served as

(See "Department" - Page 5)

PAST PRESIDENTS From 1986 to 2010

WHERE ARE THEY NOW?

“When the founding members established the AAIE in 1986, I don’t believe we envisioned a membership that would have contributed over \$1.1 million to three student scholarship endowments and provide the level of assistance and council to the IE Department. It’s been an IE team effort and a truly amazing success story.” — Larry G. Stephens, Founding President, BSIE 1958

NAME	YEAR	CURRENT STATUS	LOCATION
Larry G. Stephens, '58	1986-87	COB, Mid-South Engineering Co.	Hot Springs, Arkansas
John D. Selig, '58	1987-88	President, Selig Properties	Hot Springs, Arkansas
James F. Townsend, '56	1988-89	Retired, Cent. Maloney Transformer	Pine Bluff, Arkansas
G. Lowrance Hodge, '61	1989-90	Retired, Mary Kay, Inc.	Dallas, Texas
Sam L. Chaffin, '60	1990-91	Senior Assoc., Dunavant Logistics	Benton, Arkansas
K. William Keltner, '59	1991-92	Retired, Southwestern Bell Corp	Little Rock, Arkansas
Alfred W. Taylor, '57	1992-93	Retired, AT&T	Sherwood, Arkansas
Harry H. Merritt, '58	1993-94	Deceased 1999	Dallas, Texas
David D. Foust, '64	1994-95	Retired, Pres./CEO, Seneca Wire	Rogers, Arkansas
William A. Harrison, '66	1995-96	President, Harrison Trane	Little Rock, Arkansas
Phillip M. Duval, '61	1996-97	Owner, Phillip Duval Consulting	Texarkana, Arkansas
Robert A. Davidson, '70	1997-98	Retired, Arkansas Best Corporation	Frisco, Texas
C. Russell Jackson, '71	1998-99	Dir. of Business Dev., ADED	Little Rock, Arkansas
Robert G. McKuin, '64	1999-00	Retired, Omnigon Technologies	Little Rock, Arkansas
Duane R. Neal, '56	2000-01	Retired, President, FM Corporation	Bentonville, Arkansas
James J. Hawkins, '65	2001-02	President, Hawkins & Assoc., Inc.	Little Rock, Arkansas
John R. Endicot, III, '64	2002-03	Owner, The Design Center	Marshall, Texas
William B. Denton, '76	2003-04	President, IEA, Inc.	Little Rock, Arkansas
Dewey Freeman, '74	2004-05	U of A Industrial Engineering Dept.	Little Rock, Arkansas
William R. McKamey, '70	2005-06	Retired, VP, Public Serv. Co. of Okla.	Tulsa, Oklahoma
Andrea T. Sandage, '78	2006-07	Engineer, Ark. Dept. of Env. Qual.	Cabot, Arkansas
Curtis Sawyer, '78	2007-08	Mgr of Bus. Oper., ConAgra Foods	Russellville, Arkansas
Ralph W. Sandage, '78	2008-09	Product Engineer, Falcon Jet	Cabot, Arkansas
Melinda Faubel, '80	2009-10	Dir. of Ext. Affairs, AT&T Arkansas	Little Rock, Arkansas
F. Lee Hartz, '78	2010-11	Dir. of Application Integ. ,Walgreens	Little Rock, Arkansas

("Department" - con't from Page 3)

the 2011 Conference Chair and Dr. Ed Pohl will serve as the 2012 Conference Chair bringing important visibility to our department. Faculty research continues to grow, and in 2010, the department broke the \$2.5M mark for total research expenditures. CIHL researchers Drs. Heather Nachtmann and Ed Pohl, working with the Health Industry Group Purchasing Association and the Association for Healthcare Resource and Materials Management, conducted a survey of the health care industry in order to measure the degree to which the industry was integrating global data standards into the health care supply chain. The survey found that 68 percent of respondents were moving toward adoption of these standards in the next five years, a nearly two-fold increase from a similar survey conducted two years ago.

The Operations Management Program, under the capable leadership of Dr. Ed Pohl, continues to flourish with record enrollments. This program remains the largest U of A graduate program with 207 degrees conferred in 2010. The program welcomed Dr. Adam Morris, new Assistant Director of Operations Management, to assist with the program's unprecedented growth. A new course within the Operations Management Program entitled *Leadership for Operations Managers: Principles and Practices* was just developed by Dr. John White and is comprised of a rigorous coursework and comprehensive reading, set along with distinguished group of guest speakers including the President of the U of A, the CEO of Motorola Solutions, the President and CEO of Wal-Mart, the President and CEO of J.B. Hunt, Retired Chairman and CEO of Tyson Foods, and several others.

There were several faculty accomplishments worth mentioning. Dr. John White received the University of Florida, College of Engineering Gator Engineering Leadership Award. In addition, we were just recently notified that he will also be inducted into the Academy of Engineering Excellence at Virginia Tech at an upcoming ceremony on April 28. The prestigious Reed-Apple Award was bestowed upon Dr. Russell Meller from the Material Handling Education Foundation. I also recently received recognition by receiving the 2010 Bernie Sarchet Award from the American Society for Engineering Management, the society's highest award.

Our talented students have also been busy. In the fall 2010 term, a senior design team consisting of two IE students, two ME students, and two ChemE students worked at L'Oreal USA in North Little Rock to study waste minimization in the mascara mixing tank facility. Recommended changes in the rinsing process are expected to result in significant savings for the company. This project was a great learning experience for the students as it taught them how to work in a multi-disciplinary setting and addressed the important topic of sustainability.

On the alumni front, Mr. Bill Harrison (B.S.I.E. 1966) will be presented with the *2010 Engineering Alumni Award from the College of Engineering* at the College of Engineering Dean's Banquet on April 16.

I am certain that you will agree that the department is doing great things, and I can promise you that we plan to continue on this trajectory. In closing, don't be a stranger. If your travel plans bring you onto campus, please stop by to learn more about some of the wonderful things that we are doing. If your schedule permits, please join us on Tuesday, March 29 for the INEG Student Awards Banquet. We really hope that you will make every effort to attend our 25th Anniversary celebration at the AAIE Banquet on Friday, April 15. For further details on either of these events, please contact Mrs. Karen Standley at 479-575-6029 or at standle@uark.edu. Together, we can make this an even greater program!

Warmly,
Kim Needy

IN REMEMBRANCE

AAIE Distinguished Past Member: C. L. Cox
BSIE 1961, AAIE 1991
September 8, 1934 - January 6, 2011

C. L. Cox (BSIE 1961) passed away on January 6, 2011 after a brief illness. Born on September 8, 1934 in Paragould, Arkansas, he completed his BSIE in 1961 at the University of Arkansas. C.L. resided in Pasadena, Texas and Newnan, Georgia and was retired Plant Manager for Tredegar Aluminum Extrusions. He is survived by his wife Pat; two sons: Mickey (Robin) of Beebe, Arkansas and Monte (Beth) of Searcy, Arkansas; two daughters: Mollie Degge (Kyles) of Plano, Texas, Mariann Snyder (Tim) of Hockessin, Delaware.



GLOBAL STUDIES



John L. Imhoff Global Studies Endowment (GSE)

What has been accomplished since the inception of the John L. Imhoff Global Studies Endowment (GSE)? The AAIE and the IE Department in concert embraced the vision that Dr. John L. Imhoff expressed in 2003. This vision developed into a first of its kind fully endowed global studies scholarship program at the University of Arkansas College of Engineering. The GSE program has awarded approximately \$ 25,000 to over 20 students that have completed for credit study abroad in nine foreign countries and supplemented expenses for students attending overseas conferences..

What does the future hold for the GSE? The GSE currently contains over \$350,000 in total assets and pays scholarships of up to \$2,500 per semester for overseas study and internships. The amount of the individual scholarships awarded thus far account for approximately 15 percent of a student's total expenses for overseas study. The GSE committee is exploring the means of doubling the GSE endowment base to \$600,000 in the next five years with the intent of significantly increasing the GSE scholarship amounts and supplementing student expenses of overseas study.

Bill Denton '76

Sostratus was a clever man who possessed a great deal of ingenuity and creativity. Knowing that he had no choice but to dedicate his magnificent creation to the King of Egypt, Ptolemy II, Sostratus dared not defy the king but he also wanted his own name to live for the ages. So he carved his own name on a part of the rock on the inside, then covered it over with mortar, and inscribed on it the name of King Ptolemy II. Sostratus knew that soon enough the sea would cause the mortar and the letters inscribed thereon to wash away, and under the mortar onlookers would find this inscription: "Sostratus, son of Dexiphanes the Cnidian, dedicates this monument to the Saviour Gods, on behalf of all those who sail the seas".



Scholarship News

When we reflect on the 25th anniversary of the Academy, there are many accomplishments of AAIE that bring pride to our members. However, none of them is more important and long lasting than the scholarship endowment. Building on the vision and commitment of the members that conceived and provided initial funding of the endowments in the early 1990s, AAIE members have donated over a million dollars to our various scholarship endowments. AAIE has a remarkable record of providing scholarships to industrial engineering students at the University of Arkansas.



From the beginning, the AAIE Board wanted to create a lasting legacy to support the Industrial Engineering Department, its students, and the University of Arkansas. This approach provided a model for the other College of Engineering academy boards to follow. A formal endowment agreement entered into with the University of Arkansas Foundation governs the manner in which the funds are received, managed, and disbursed for the purposes set forth in the agreement. This has allowed the endowment to receive member contributions large and small, and benefit from transfers of excess member dues to the US Foundation.

In the early 1990s, the AAIE Academic Scholarship endowment was created with the help of an initial \$50,000 contribution from Baekert Steel arranged by Dave Foust. Over the years, with many contributions by AAIE members, this endowment fund has grown to exceed \$560,000.

About ten years later, the AAIE Board, acting on the vision of Ron Morris, created a second endowment for scholarships to students that needed financial support to complete their education. This endowment is called the AAIE Financial Needs Scholarship. The Board allocated \$25,000 required by the UA Foundation to establish the formal endowment. The student recipient needs to qualify academically, but the emphasis is on those students who need financial support. The University of Arkansas Financial Aid Office criteria are used to qualify the students to receive these scholarships. Since its inception, the AAIE Financial Needs Endowment has grown to exceed \$235,000.

A third endowment, AAIE Global Studies Scholarship is managed under a separate endowment agreement established by AAIE Honorary Member Dr. John Imhoff. It is overseen by the AAIE Board, but has a separate endowment agreement not created by AAIE governing its operation. Its asset balance is over \$310,000.

The interest received from these endowments is used to fund student scholarships each year. Students must apply for scholarships, and a faculty committee within the Industrial Engineering Department handles the applications. Based on the request from the department committee, the AAIE Board annually allocates funds from the interest accounts to fund the scholarships. Student recipients are announced and receive recognition at the annual Industrial Engineering Student Awards Banquet each Spring.

As of February 2001, the scholarship endowment fund balances were:

AAIE Academic Scholarship	\$569,406
Financial Needs Scholarship	\$238,246
Global Studies Scholarship	\$311,368

In all cases, the formal UA Foundation endowments make the scholarship funding permanent and effectively managed, but it is the commitment and generosity of the AAIE membership that makes them grow. We are currently engaged in a campaign to increase the size of the Academic Endowment by \$100,000. As of this Spring, we have reached over half that goal with member contributions of \$54,100. Please make your contribution now.

Dewey Freeman '74

Here are a few things to think about:

Why is the man who invests all your money called a broker?
Can you cry under water?



Why didn't Noah swat those two mosquitoes?

How important does a person have to be before they are considered assassinated instead of just murdered?

Why do you have to "put your two cents in" .. but it's only a "penny for your thoughts"? Where's that extra penny going to?

Once you're in heaven, do you get



stuck wearing the clothes you were buried in for eternity?

What disease did cured ham actually have?

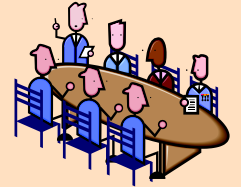


How is it that we put man on the moon before we figured out it would be a good idea to put wheels on luggage?

Why do toasters always have a setting that burns the toast to a horrible crisp, which no decent human being would eat?

MEMBERSHIP COMMITTEE RECRUITS ELEVEN NOMINEES FOR INDUCTION

Mike Gross, AAIE Membership Committee Chair, recruited eleven inductees for AAIE membership for 2011. They are as follows:



Ami Spivey (BSIE '93) - Ami spent her formative years in Northwest Arkansas and has been employed with Wal-Mart Stores, Inc., for the past eighteen, serving as Senior Director of Transportation, Assistant General Regional Operations Manager, and Industrial Engineer. She currently serves as Vice President of Innovation with Sam's Club in Bentonville, Arkansas, and her team sponsored three IE senior design projects in 2010.

David Johnson (BSIE/MSIE '91/94) - Born in Hong King, David has lived on three continents as the son of a U.S. Diplomat. He has held positions in manufacturing production, operations management, and supply chain management, and is currently a consultant for Scott Sheldon, LLC, in Denver, Colorado.

John W. Lillard (BSIE '83) - John was raised in Arkansas and is the brother of Donna Young, a current AAIE board member. John has been employed for twenty-seven years with Mohawk Industries as Plant Industrial Engineer, Plant Superintendent, and Special Projects Engineer, and is currently Plant Manager with Mohawk Industries at their Dalton, Georgia facility.

Howard J. (Scooter) Sayers (BSIE '88, MBA '95) - The son of a U.S. Marine, Scooter was raised along the East Coast, and began his career with Texas Instruments in Dallas, Texas. He has been employed for the last twenty years with ABF Freight System in Fort Smith, most recently as Director-Traffic Services.

Alvin Rhodes (BSIE '96) - Alvin grew up in Forrest City, Arkansas, and has been employed by Stephens, Inc., Southwest Securities, and Intellinex/Earnst and Young as computer analyst and software developer. He is currently an applications developer/team leader for AmerisourceBergen Specialty Group in Frisco, Texas, and has authored educational software for teachers.

William Chris Setser (BSIE '93) - Chris spent the first sixteen years of his career with ABF Freight System in Fort Smith, Arkansas, with his last position as Pricing Manager. He is currently employed as Director of Pricing with USA Truck, Inc., in Van Buren, Arkansas.

Peter West (BSIE '86) - Peter grew up in West Fork, Arkansas. He spent the first twenty years of his career in the electronics, plastics and tooling industries as IE manager, Engineering and Production Management. He is currently employed with Apex Tool Group in Springdale, Arkansas, in Engineering and Production Management.

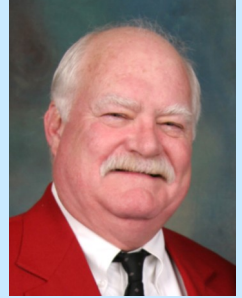
R. Brian Henley (BSIE '86, MBA '91) - Brian was raised in Crossett, Arkansas, and began his career with IBM as a marketing representative. He subsequently held positions in marketing and business development with several firms. Currently, he is Partner/Portfolio Manager with Rogge Capital Management in Austin, Texas.

Chuck Tilmon (BSIE/MSIE '94/'95) - Born and raised in Texarkana, Arkansas, he began his career with ABF Freight System as a Pricing Analyst, and then moved to J. B. Hunt Logistics/Transplace as Logistics Engineer. He is currently employed as Senior Director of Produce Replenishment with Wal-Mart Stores, Inc., in Bentonville, Arkansas.

(See "Inductees" - Next Page)

From the Editor

The Dodecahedron was born in 1997 as a single-page, black and white newsletter, the brainchild of Jim Hawkins ('65). With generous support by the IE Department and the many article contributions from the AAIE membership, the Dodecahedron has grown to the present multi-color, multi-page publication, printed and digital, designed to provide you, the AAIE membership, with newsworthy information regarding the activities of the Academy membership and the IE Department.



What does the future hold for the Dodecahedron? I believe the potential is limited only by the creativity and effort of the Academy membership (remember continuous improvement?). I'll be "retiring" as editor of the Dodecahedron this spring after serving for eight years at the pleasure and patience of the AAIE Board. Donna Young, Dodecahedron vice-chair, has graciously agreed to assume the responsibilities of editor.

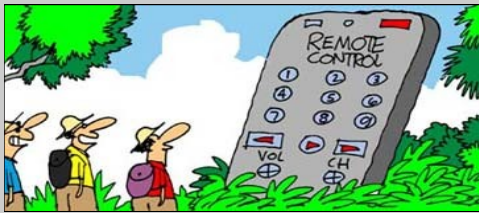
Bill Denton '76

MEMBER IN THE NEWS



Chancellor Emeritus Dr. John White (BSIE '62) will be inducted into the Academy of Engineering Excellence at Virginia Polytechnic Institute and State University in a ceremony to be held on April 28, 2011, at Blacksburg, Virginia.

Always keep an open mind and a compassionate heart. — Phil Jackson
In every walk with nature one receives far more than he seeks. — John Muir



Gentlemen, our pilgrimage is over!

"Look here, this man beside you on this fatigue detail is doing twice the work you are." "I know, sir. That's what I've been telling him for the last hour, but he won't slow down."

The troops were being taught to jump from a plane. "What if my parachute doesn't open?" asked one rookie. "That," said the instructor, "is known as jumping to a conclusion."

("Inductees" - con't from Page 8)

Gary Bennett (BSIE '89) - Gary grew up in Northwest Arkansas, and after graduation, he began his career with Wal-Mart Stores, Inc., as a Computer Programmer. He moved to Harp Food Stores in 1994, and currently serves as Director of Information Systems in Springdale, Arkansas.

Kari Griggs (BSIE '88) - Kari was born in Fayetteville and raised in North Little Rock, Arkansas. She began her career with Poulan/Weedeater-Electrolux, Inc., and subsequently served as Project Manager, Senior Industrial Engineer, and Senior Quality Engineer with several manufacturing firms. She is currently a Senior Industrial Engineer with Nilfisk-Advance, Inc., in Springdale, Arkansas.

AAIE MEMBER DEMOGRAPHICS

That Explains it!



Where did the Piggy Bank come from? The piggy bank made its debut in Western Europe between the sixteenth and eighteenth centuries, and replaced the clay jars that once housed spare change. People named the pig-shaped bank after the orange clay, "pygg," from which it was crafted. The bank retained its name long after artisans stopped using the clay to produce pottery, and eventually the name "pygg" assumed the name "pig bank," and then the name "piggy bank." The individual who formed the first lump of "pygg" into the shape of a pig either had a sense of humor, or saw symbolism in using the pig as a model. One school of thought insists that the piggy bank is fed the "leftovers" of a ones money until it is fat enough to be smashed, and the money harvested.

An analysis of the information contained in the AAIE membership directory yields some interesting data.

OCCUPATION CATEGORY - AAIE members report diverse occupations with manufacturing remaining in the forefront.

Manufacturing and related Industries	33 %
Distribution and Sales	12 %
Academic	9 %
Miscellaneous (Legal, entertainment, etc.)	8 %
Transportation	8 %
Government	6 %
Telecommunications	6 %
Construction, Development & Real Estate	5 %
Healthcare	4 %
Insurance, Banking, & Finance	4 %
Energy	3 %
Information Technology	2 %

AGE - AAIE member ages are diverse as well and span almost three generations.

Mean Age	58 years (57% of the membership is over 58 years of age)
Median Age	61 years
Range	38 - 76 years

GENDER - AAIE active membership is composed of 94 % male and 6 % female. The first female member was inducted in 1991.

DISTANCE FROM U of A - AAIE members reside from local to the U of A to as far away as La Paz, Bolivia (+4,000 mi.), and many points in between.

55 % of the membership reside less than 200 miles from the U of A

69 % of the membership reside less than 300 miles from the U of A

82 % of the membership reside less than 400 miles from the U of A



Sometime in the middle of the night Holmes woke Watson up and said: "Watson, look up at the stars, and tell me what you see."

Watson replied: "I see millions and millions of stars."

Holmes said: "and what do you deduce from that?"

Watson replied: "Well, if there are millions of stars, and if even a few of those have planets, it's quite likely there are some planets like earth out there. And if there are a few planets like earth out there, there might also be life."

And Holmes said: "Watson, you idiot, it means that somebody stole our tent."



We're on the web!

www.ineq.uark.edu/

aaie

Arkansas Academy of Industrial Engineering

Annual Golf Tournament! Friday, April 15th

Celebrating 25 years!

Please sponsor a hole and help us support our Industrial Engineering students

Cost: ONLY \$100 per hole

Company Name _____

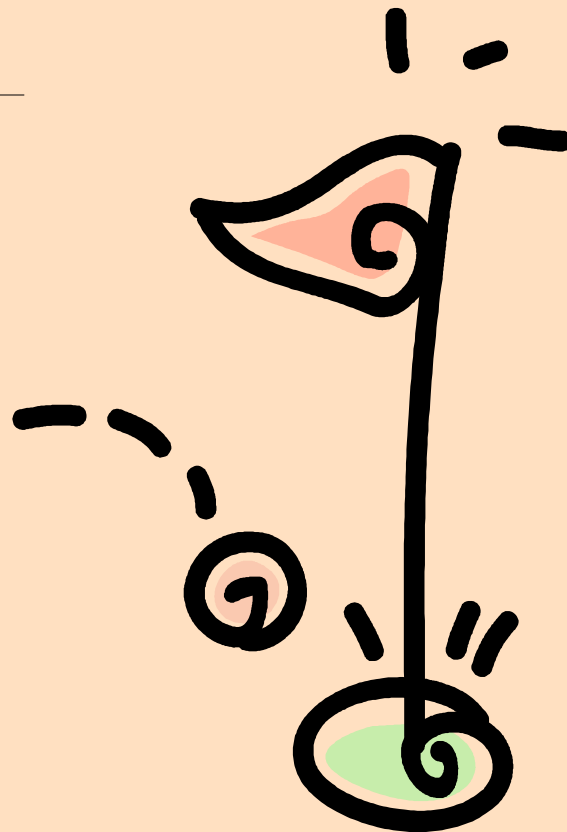
Address _____

City/State/Zip _____ Phone _____

Authorized Signature

Please make checks payable to: AAIE

Send completed form and payment to:
AAIE
4207 Bell Engineering Center
University of Arkansas
Fayetteville, AR 72701



The Arkansas Academy of Industrial Engineering (AAIE) was established in 1986 to recognize the achievements of University of Arkansas Industrial Engineering graduates and to provide continuing guidance and support to the Department of Industrial Engineering.

The Academy also provides its members with the opportunity to nurture and support the organization that played an important role in their professional growth and development.

THE DODECAHEDRON is a publication of the Arkansas Academy of Industrial Engineering, and the views expressed are those of the AAIE only and do not reflect the official view of the University of Arkansas, the College of Engineering, or the Department of Industrial Engineering. THE DODECAHEDRON is published semi-annually and is intended for the membership of the Arkansas Academy of Industrial Engineering.

You may contact the editor at wbdenton@swbell.net.

What Is It?
(From Page 2)

The Antikythera Mechanism is a 2000-year-old, shoebox-size, bronze, mechanical gadget thought to have been an astronomical device. Sponge-divers looking at a shipwreck, off the Greek island of Antikythera, in 1900 (National Geographic) says 1901), found this ancient calculator or "first mechanical computer." It contains 30 bronze gears and about 224 teeth. Its complexity has been compared with 18th century clock-works. State of the art imaging techniques (X-ray computer tomography and computer-enhanced optical imaging techniques) applied to it revealed its ability to predict lunar and solar eclipses. It may have shown the motions of the planets.

ARKANSAS ACADEMY OF INDUSTRIAL ENGINEERS

GOLF SHIRT ORDER FORM

Ordered By:

Name: _____

Address: _____

State: _____

Zip/Postal Code: _____

Phone: _____

Credit Card No. _____

Visa ___ Master Card ___ American Exp ___

Ship To:

If Different than Billing _____

Check for local pick up ___

Freight Charges will be void

Sales tax will be added except on out of state shipments.

Nike Dri-Fit pique sport shirt; 4.4 ounce; 100% polyester; superior softness; optimal moisture control; hemmed sleeves

Please check size requested and fill in quantity.

WOMENS Small	\$37.00	QTY ___
MENS Small	\$37.00	QTY ___
WOMENS Medium	\$37.00	QTY ___
MENS Medium	\$37.00	QTY ___
WOMENS Large	\$37.00	QTY ___
MENS Large	\$37.00	QTY ___
WOMENS X-Large	\$37.00	QTY ___
MENS X-Large	\$37.00	QTY ___
WOMENS 2X-Large	\$39.00	QTY ___
MENS 2X-Large	\$39.00	QTY ___
MENS 3X-Large	\$40.00	QTY ___
MENS 4X-Large	\$41.00	QTY ___

Freight Charges: \$10.70 USPS

Call 501-376-9999 with order information.
www.triviamarketing.com

