

# Embedding Preservability: Iframes in Complex Scholarly Publications

Karen Hanson<sup>1</sup>, Jonathan Greenberg<sup>2</sup>, Thib Guicherd-Callin<sup>3</sup>, Scott Witmer<sup>4</sup>, Angela T. Spinazzè<sup>5</sup>

1. Portico | 2. New York University Libraries | 3. LOCKSS | 4. University of Michigan Library | 5. ATSPIN consulting

## What is a complex publication?


- Includes enhanced features such as:
  - embedded audio / video
  - non-linear navigation
  - data visualizations e.g., interactive maps
  - supporting software, code, data
  - annotations and highlights
- Challenging to preserve at scale**



## A common preservation challenge in complex publications: Iframes

### Typical *iframe* use: lacks context

Lorem ipsum dolor sit amet, consectetur adipiscing elit, sed do eiusmod tempor incididunt ut labore et dolore magna aliqua.




Sit amet consectetur adipiscing elit ut aliquam purus sit amet. Pulvinar sapien et ligula ullamcorper malesuada proin libero nunc consequat. Sed velit dignissim sodales ut...

An *iframe* is a webpage that is visually embedded in HTML content e.g., a YouTube video. It's vulnerable to **link rot**, which leaves only a URL as context.

```
<iframe href="{iframe-url}"/>
```

### Proposed *iframe* use: Enhancements to support preservability

Lorem ipsum dolor sit amet, consectetur adipiscing elit, sed do eiusmod tempor incididunt ut labore et dolore magna aliqua.



How to Grow a Perfect Tomato. Uploaded to YouTube by User1234 on Dec. 21, 2020. License: IN COPYRIGHT - NON-COMMERCIAL USE PERMITTED.<sup>4</sup>

Sit amet consectetur adipiscing elit ut aliquam purus sit amet. Pulvinar sapien et ligula ullamcorper malesuada proin libero nunc consequat. Sed velit dignissim sodales ut...

4. A copy of *How to Grow a Perfect Tomato* is archived in Example Repository. <https://doi.org/10.example/example>.

Populate the **iframe title field** to provide minimum information.

```
<iframe href="{iframe-url}" title="{title}"/>
```

Add a **caption** to provide context, give users a chance of finding a copy of the material. Could be tagged to make it machine readable.

Add a **machine-readable license declaration** to help harvesters determine license status of iframe content.

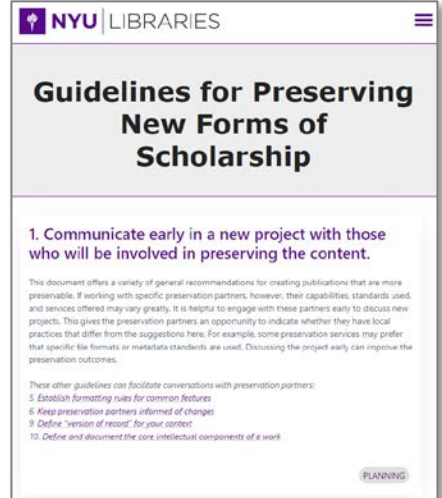
```
<a about="{iframe-url}" rel="license" href="{license-uri}">{license-name}</a>
```

Provide a **persistent link to a downloadable version** of the resource or underlying data in the caption or via a footnote or citation. This could also be a web archive link for the resource.

## Two projects examining complex publications

### #1: Create publisher guidelines

- Examine complex publications
- Determine what aspects are **difficult to preserve at scale**
- Use this to **develop guidelines** that publishers and authors can use to improve preservability of publications



### #2: Embed preservability

- Embed preservation experts in publisher workflows and work with publisher platforms
- Learn about **what is plausible** to implement to improve preservability
- Iterate on the guidelines**