



Air Transformed

by Stefanie Posavec
and Miriam Quick

a series of wearable
data objects

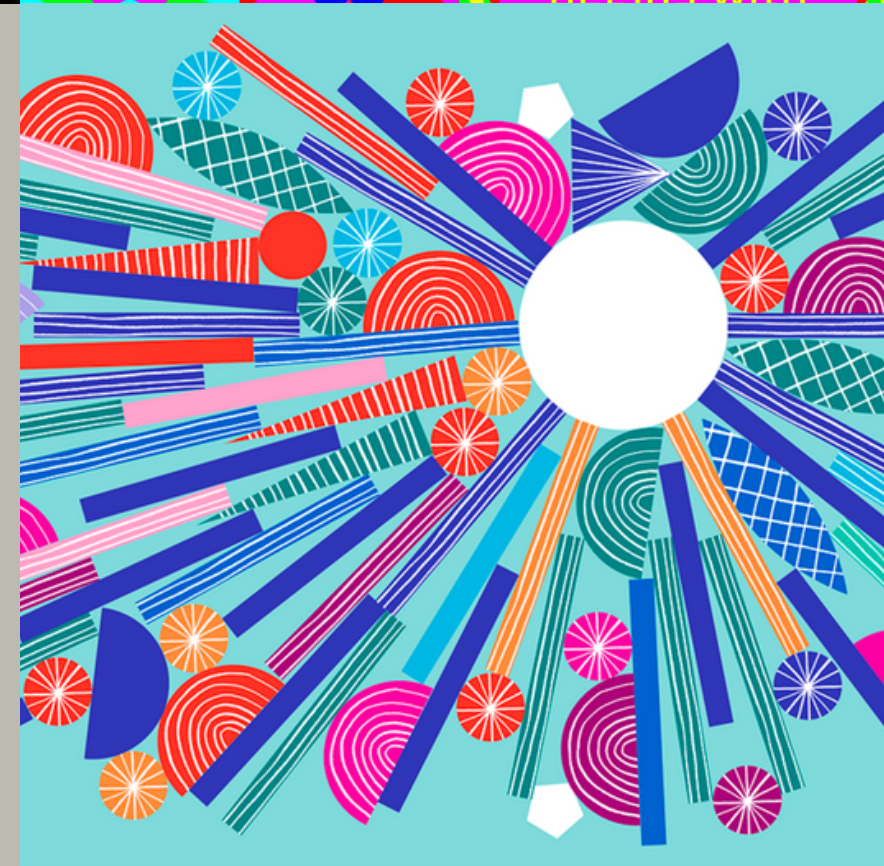


Stefanie Posavec

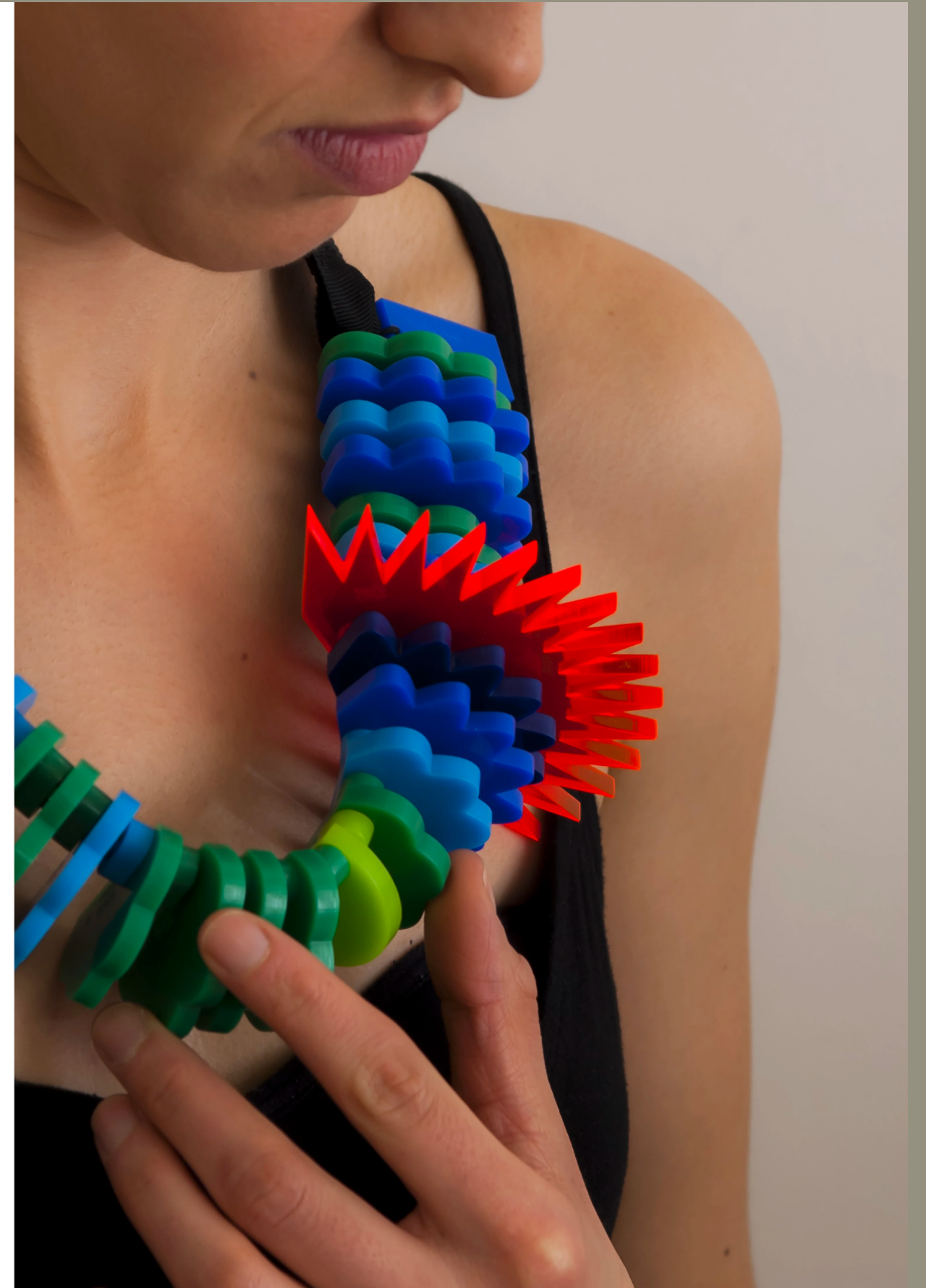
exploring experimental
approaches to
communicating data
and information to all
ages and audiences



color
regular shape
simple



Overview of Air Transformed



Data collected

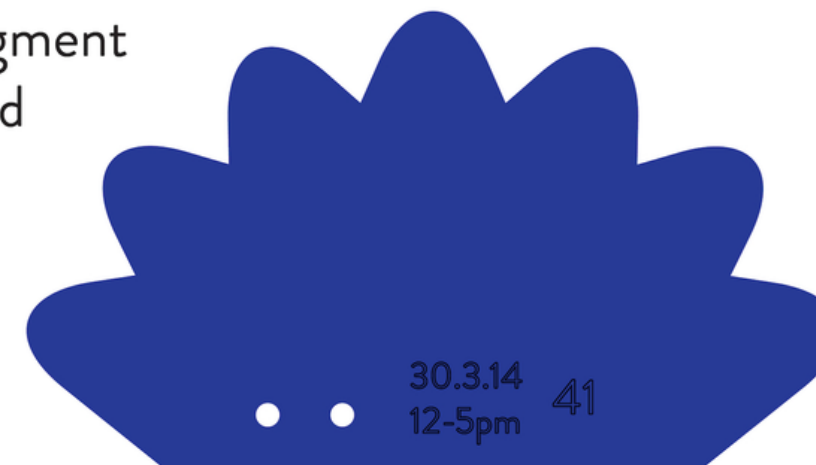


less polluted → more polluted

Coloured according to 10-point scale (only 6 bands used)



Each segment
is labelled





Bonfire Night,
with the highest
levels in 2014

Weekend
firework displays

Bonfire Week
4-10 November



Why valuable

- Sheffield, UK, famous for metallurgy and steel-making
- Emissions and pollutants
- friendly, accessible pieces for public engagement, touchable

Society Commission + Communication

The outstanding part for me



how it physically interact with our body - the shape and weight



simple shape and basic colors to clearly convey the message

Critic

- how can different features represent different datas?
eg. Size, number of segmen, color, the sharpness level...
- data collected might be indufficient related to this air pollution problem

Questions

- How can artists strike a delicate balance between simplicity and complexity in their design work, and what are the implications of this balance for the audience's comprehension and accessibility to the art?

Reference

Miriam Quick's blog post <https://miriamquick.com/air-transformed>

Stefanie Posavec's blog post

<https://www.stefanieposavec.com/airtransformed>

air quality in Sheffield <https://www.iqair.com/uk/england/sheffield>

Air pollution Sheffield-history

<https://www.sheffieldhistory.co.uk/forums/topic/8350-air-pollution-sheffield-history/page/2/>

pollutants in Sheffield [https://www.sheffield.gov.uk/pollution-
nuisance/air-quality](https://www.sheffield.gov.uk/pollution-nuisance/air-quality)