

SMART ACOUSTIC SENSING

wp.sonyc.edu/sonyc



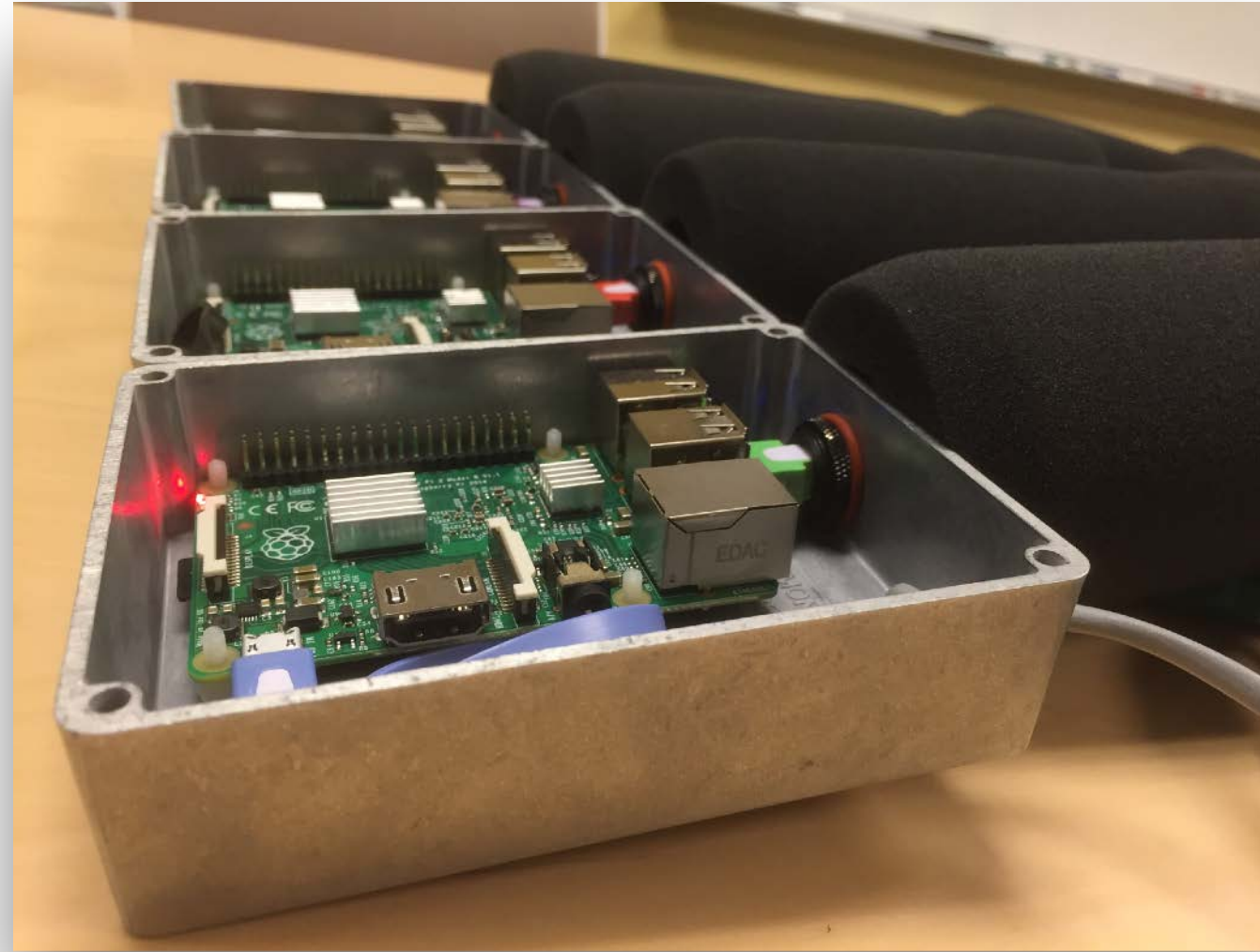
Charlie Mydlarz, Yitzchak Lockerman, Mohit Sharma, Yu Wang, Ben Steers, Isha Chaturvedi



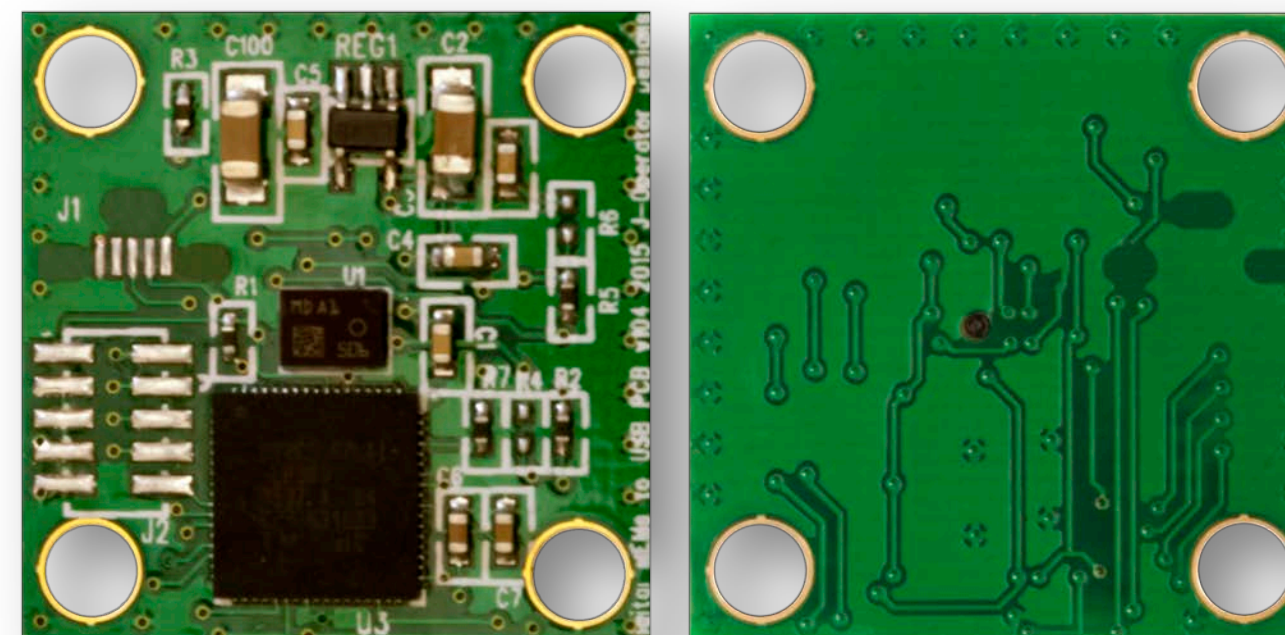
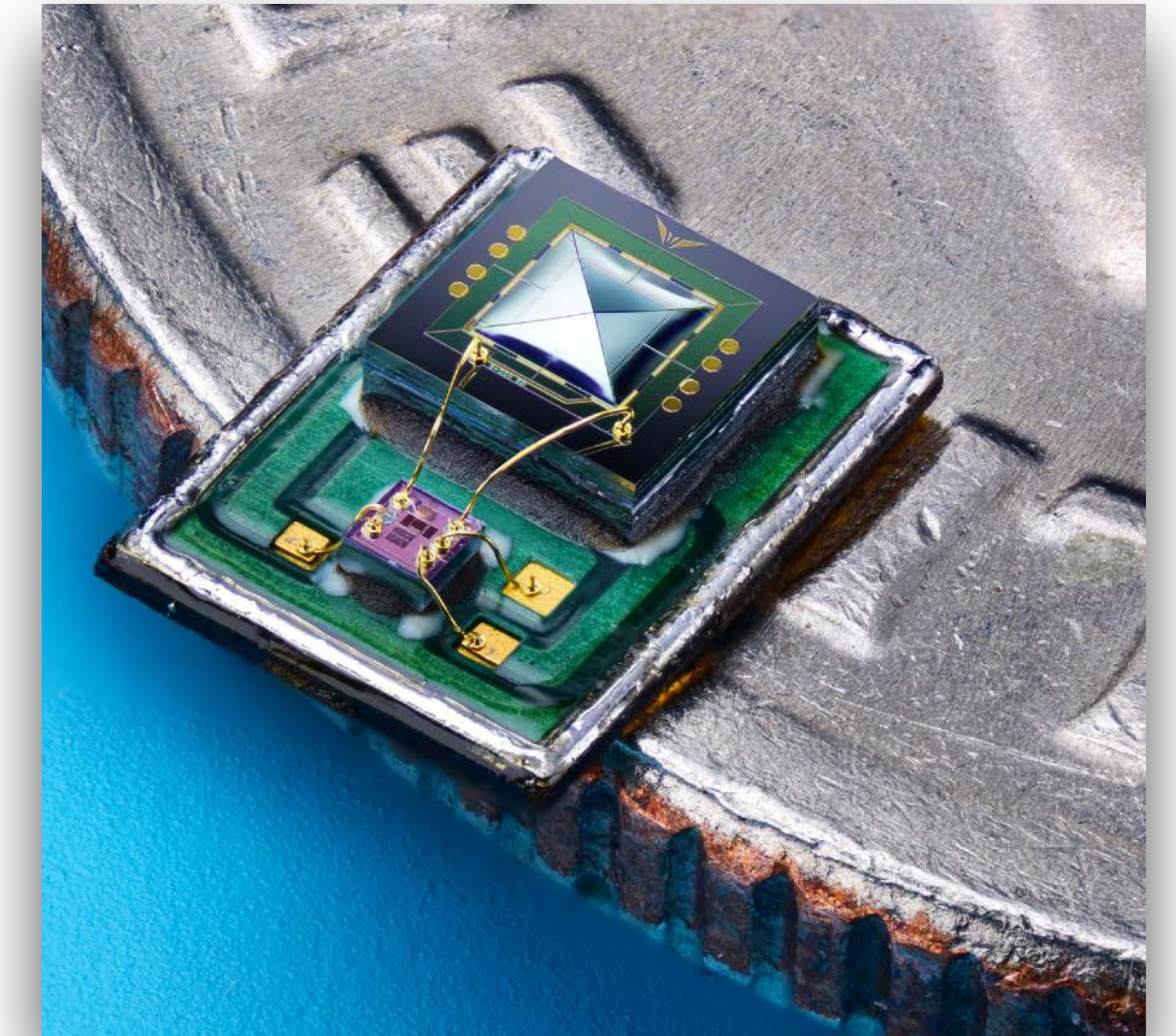
HOW WAS ACOUSTIC SENSING DONE?

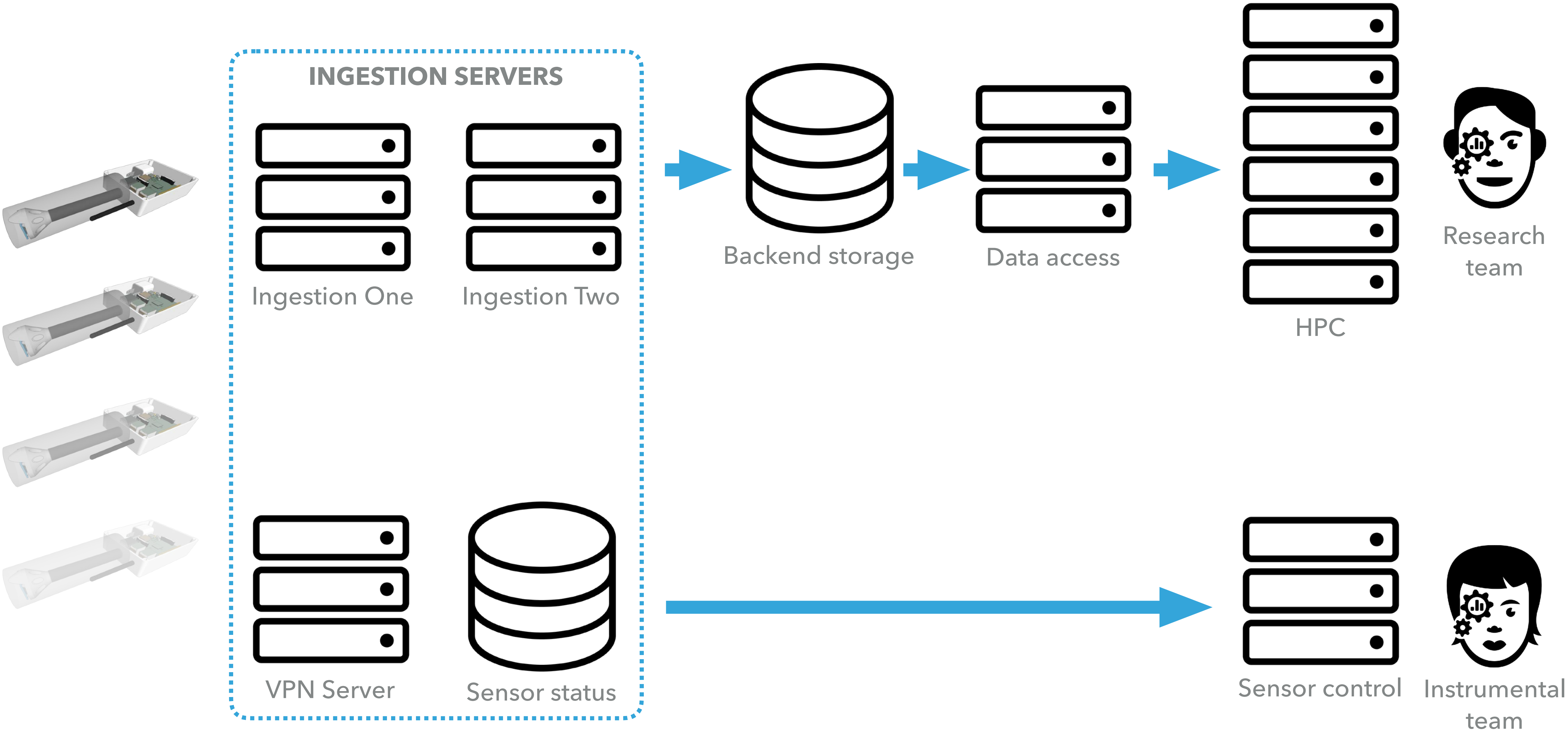


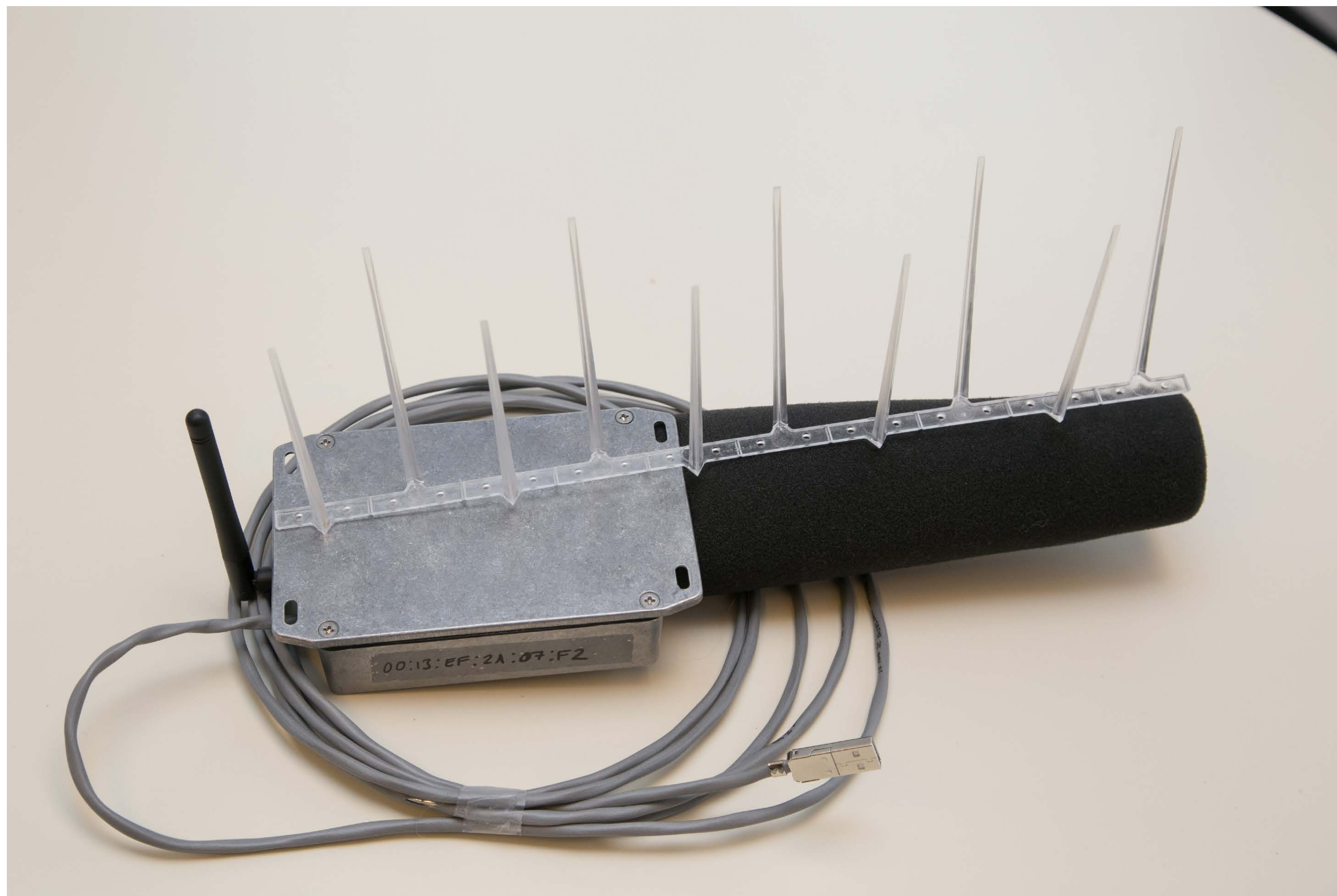
- ▶ Design focussed on:
 - ▶ Accuracy
 - ▶ Resilience
 - ▶ Scalability



- ▶ Calibrated data capture to city agency standards
- ▶ Custom MEMS microphone tech
- ▶ Quad core SBC
- ▶ Low power consumption
- ▶ Requires power and Wi-Fi
- ▶ Node cost: ~\$85





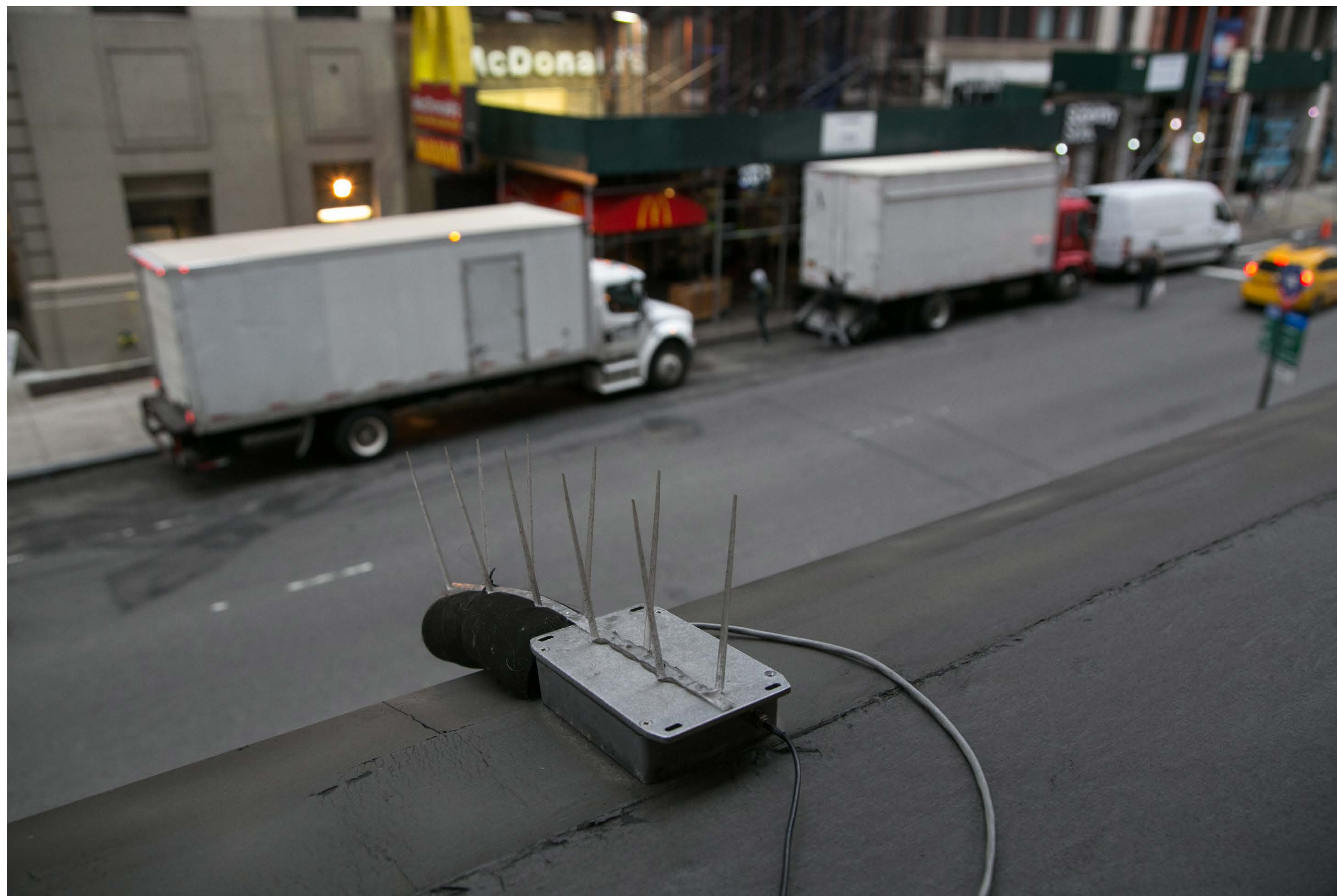






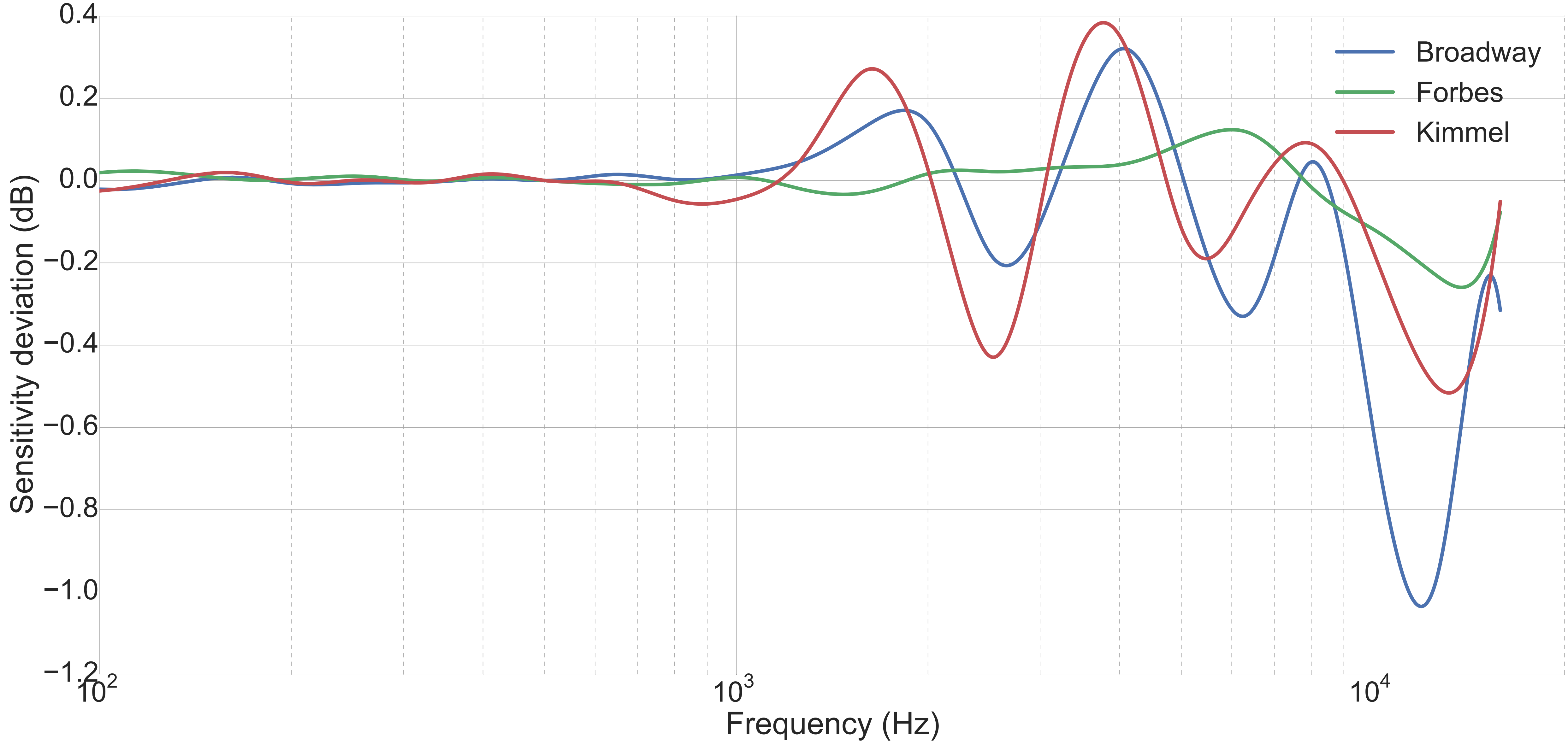




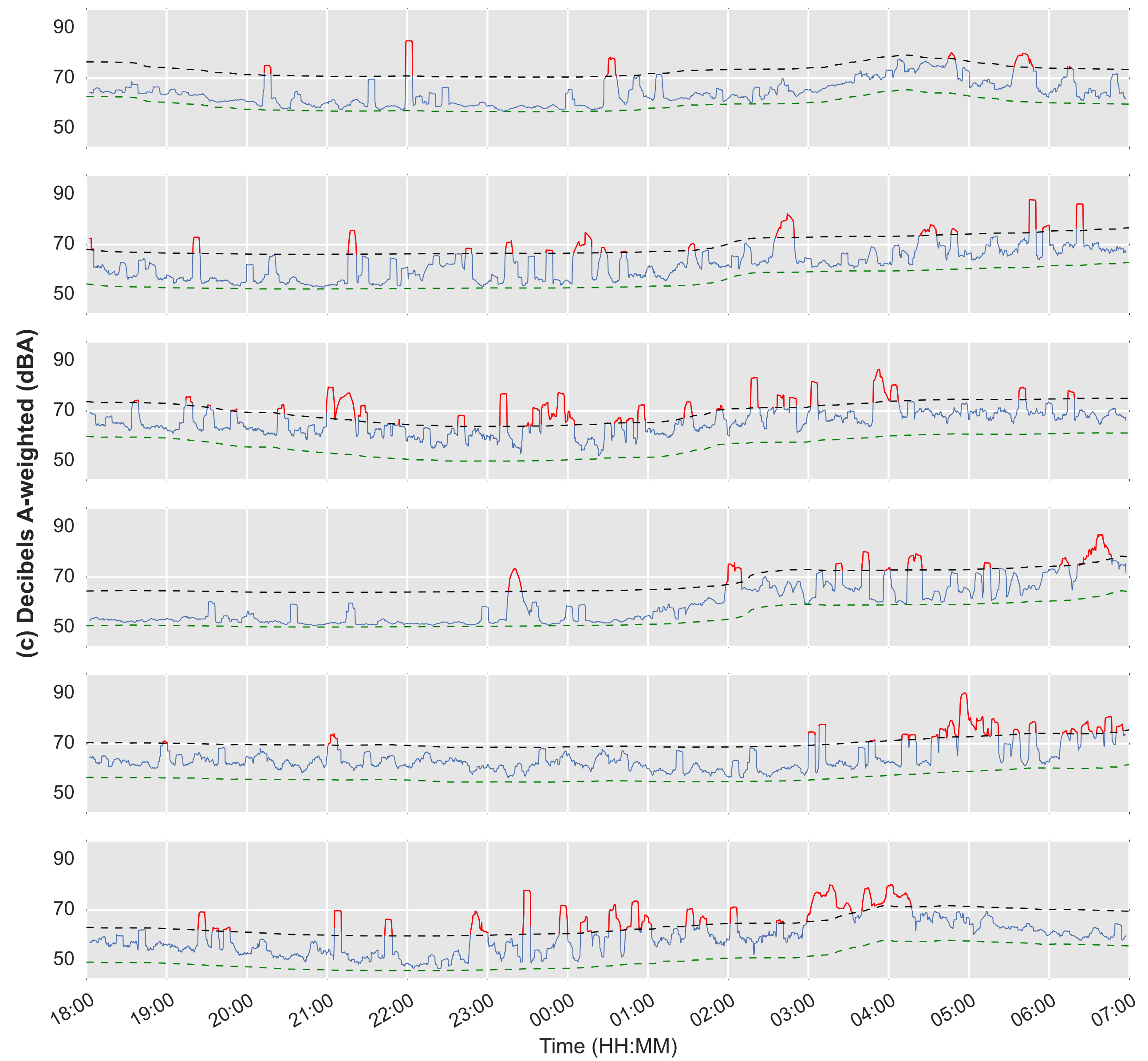
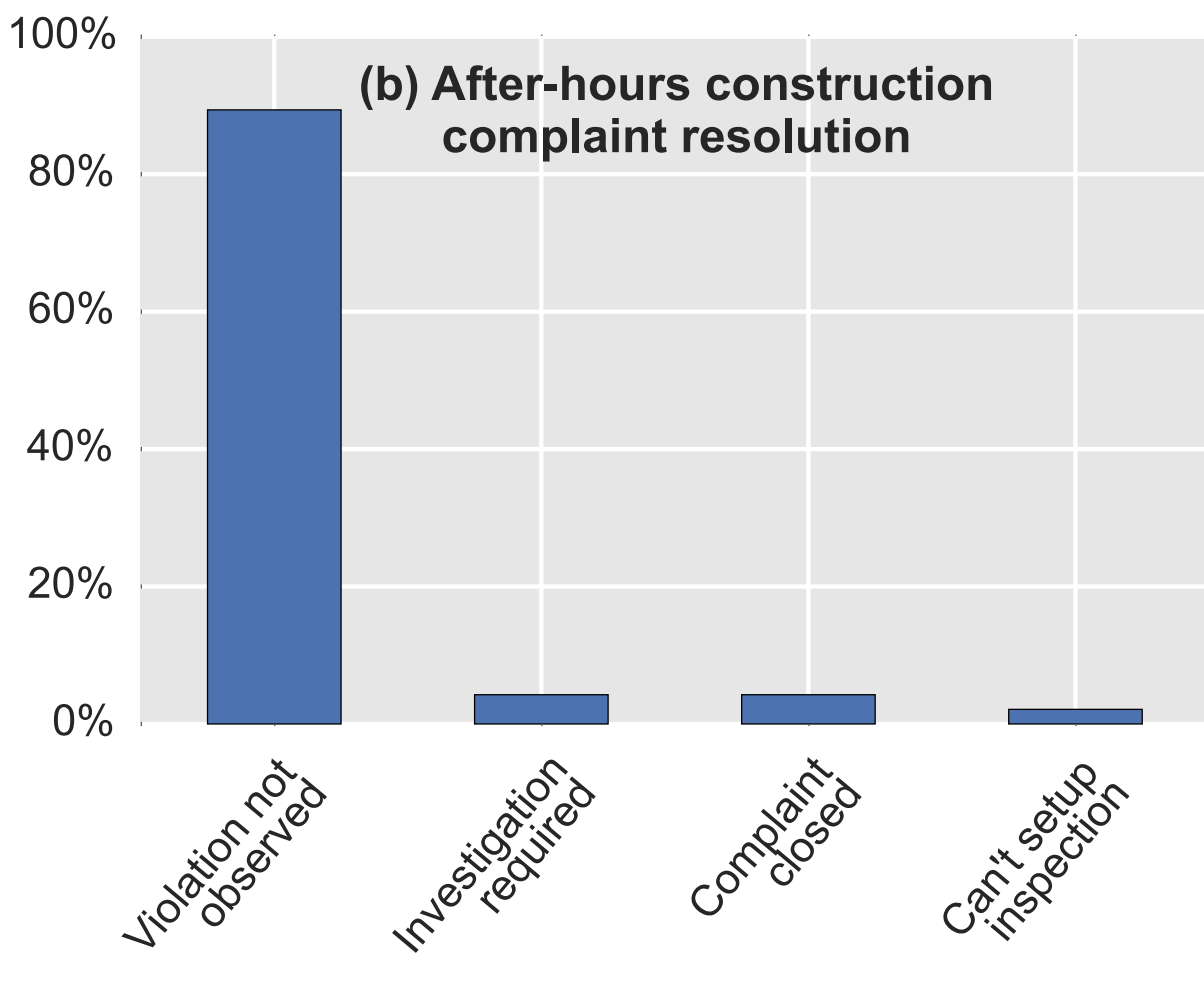
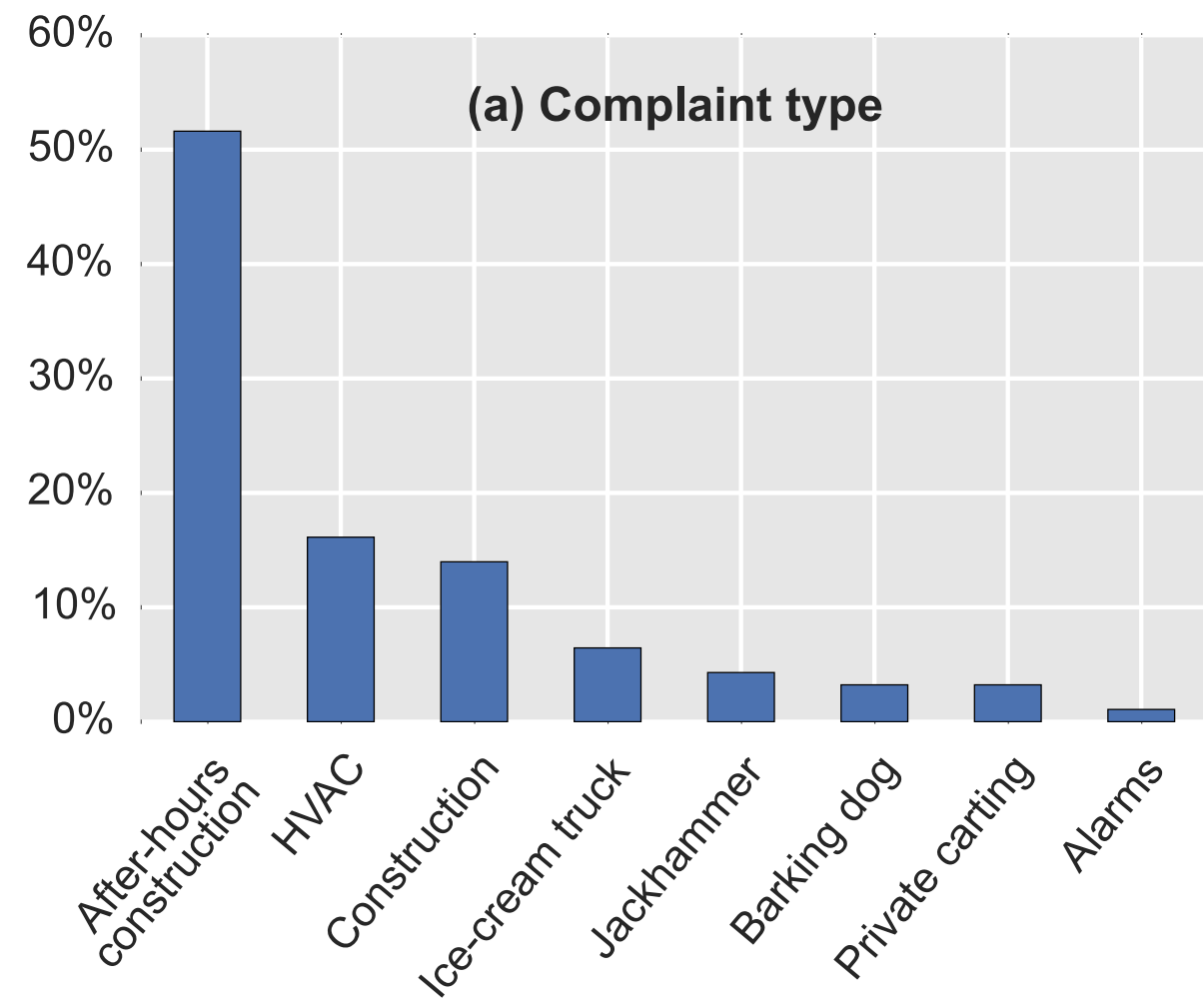




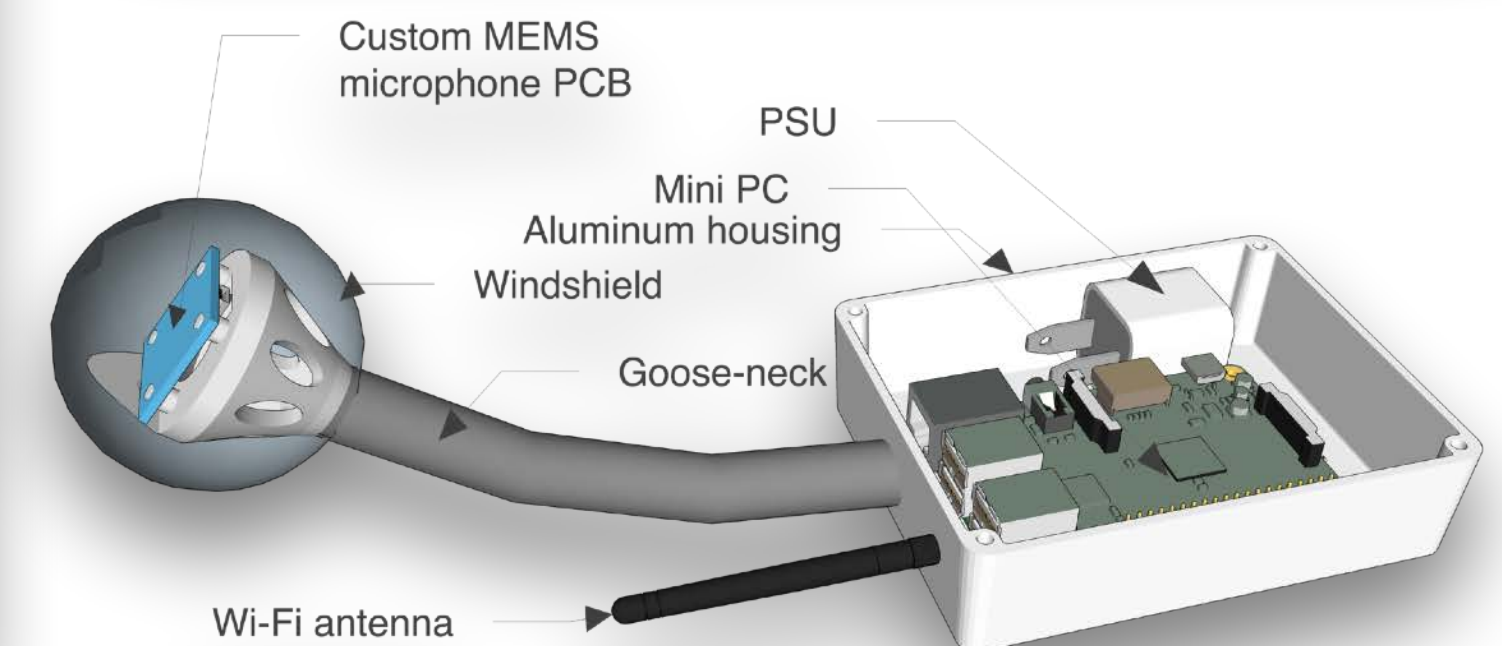
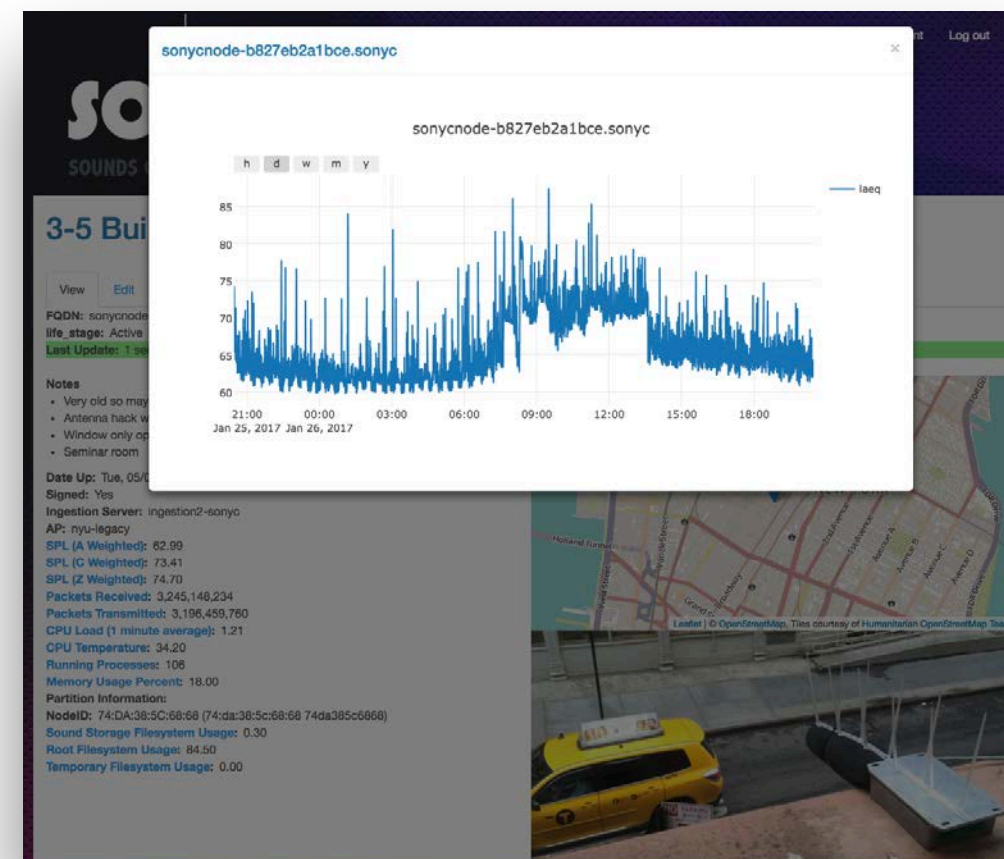


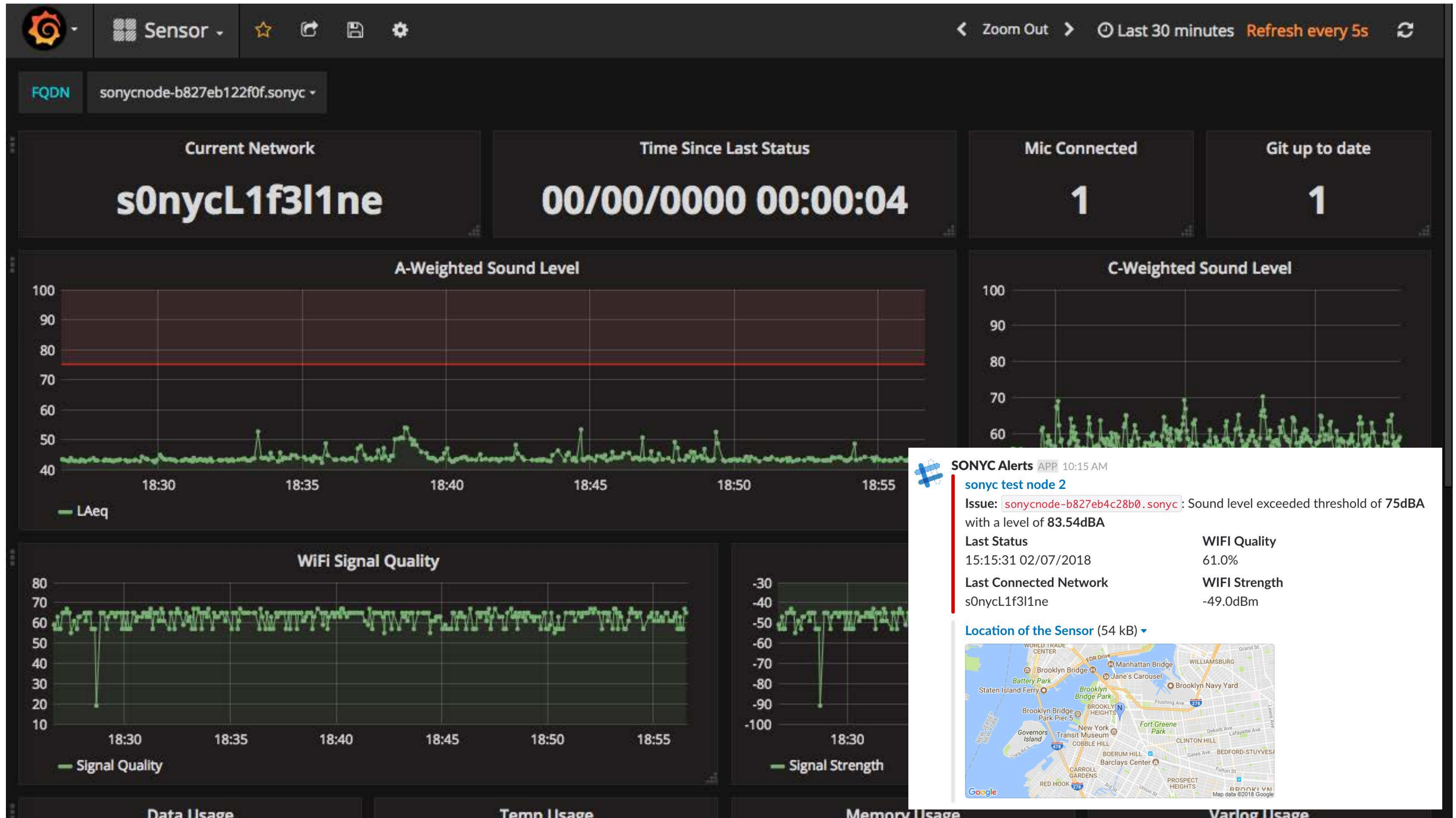






- ▶ 45 deployed nodes, most for over a year
- ▶ 24/7/365 SPL data flowing
- ▶ Real-time telemetry dashboard and alerting







LinkNYC



DEPLOYMENT

