

# TRANSFORMATION

African American Theater 1821-1921  
From African Grove Theatre to Shuffle Along  
January 31 - February 28, 2022



**African Grove Playbill: Tom and Jerry , 1823.**  
Collection of the Smithsonian National Museum of African American History and Culture.  
36” x 17”



**African Grove Playbill: For the Benefit of the Greeks , 1827.**  
Collection of the Smithsonian National Museum of African American History and Culture.  
36” x 17”



**African Grove Playbill: Macbeth.**  
Collection of the Smithsonian National Museum of African American History and Culture.  
36” x 14”



**Hewlett, James as Richard the Third in imitation of Mr. Kean, 1821 - 31.**  
Collection of Houghton Library, Harvard University.  
10” x 12”



**Playbill from the Vaudeville Theater, Koln, Germany, 1852.**  
Collection of the Folger Shakespere Library.  
24” x 14”



**Playbill for Ira Aldridge in Othello and the Slave Theater, 1857.**  
Collection of the Smithsonian National Museum of African American History and Culture.  
40” x 14”



**Theatre poster featuring Ira Aldridge performing in Lovers of Bourbon, 1856.**  
Collection of the Smithsonian National Museum of African American History and Culture.  
36” x 18”

# TRANSFORMATION!

African American Theater 1821-1921  
From African Grove Theatre to Shuffle Along  
January 31 - February 28, 2022



**Playbill, Dingwall Theatre, Scotland, May 1, 1840.**  
Collection of Folger Shakespere Library.  
24" x 18"



**Ira Aldridge as Othello, 1830.**  
National Portrait Gallery, Smithsonian Institution.  
32" x 24"



**Mr. Ira Aldridge as Aaron, 1852.**  
Prints and Photographs Division of the Library of Congress Online  
Catalog.  
9" x 12"



**Ira Aldridge as Macbeth, 1865.**  
Collection of Houghton Library, Harvard University.  
8" x 10"



**Ira Aldridge as Othello Color.**  
Collection of Houghton Library, Harvard University  
24" x 18"



**Ira Aldridge Portrait.**  
Collection of Houghton Library, Harvard University.  
8" x 10"



**Aldridge, Ira. Mr. Ira Aldridge as Mungo in The Padlock, 1850.**  
Collection of Houghton Library, Harvard University.  
6" x 8"

# TRANSFORMATION!

## African American Theater 1821-1921 From African Grove Theatre to Shuffle Along January 31 - February 28, 2022



### **Cake Walk, 1905.**

Prints and Photographs Division of the Library of Congress Online  
Catalog.  
9" x 12"



### **Swipsey Cake Walk, 1900.**

Prints and Photographs Division of the Library of Congress Online  
Catalog.  
9" x 12"



### **Black Cinderella, 1900.**

Prints and Photographs Division of the Library of Congress Online  
Catalog.  
9" x 12"



### **Cake Walk - Van Cortlandt Park [New York], 1900.**

Prints and Photographs Division of the Library of Congress Online  
Catalog.  
9" x 12"



### **Dusky Dianah: Cake Walk and Patrol, 1899.**

Historic American Sheet Music Collection of Duke University  
Libraries Digital Collections.  
9" x 12"



### **Stage Artists: The Cake Walk. Color postcard of dancing couple, man in grey suit and top hat and woman in white dress and red shoes, 1900.**

Photographs and Prints Division, Schomburg Center for Research in  
Black Culture, The New York Public Library  
4" x 6"



### **Cake Walk (Negro Dance). Tinted postcard of young boy and girl in dance pose, boy holding top hat, girl in dipped position, 1900.**

Photographs and Prints Division, Schomburg Center for Research in  
Black Culture, The New York Public Library.  
4" x 6"

# TRANSFORMATION

## African American Theater 1821-1921 From African Grove Theatre to Shuffle Along January 31 - February 28, 2022



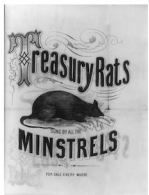
**Cake Walk. Photo postcard of couple in dancing pose, woman gesturing with both hands, 1900.**

Photographs and Prints Division, Schomburg Center for Research in Black Culture, The New York Public Library.  
4" x 6"



**Callender's Famous Georgia Minstrels, advertisement broadside (in Series I), 1875.**

Beinecke Rare Book and Manuscript Library, Yale University  
14" x 36"



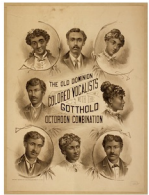
**Treasury rats - Sung by all the Minstrels, 1864.**

Prints and Photographs Division of the Library of Congress Online  
Catalog.  
9" X 12"



**Negro double song & dance, 1875.**

Prints and Photographs Division of the Library of Congress Online  
Catalog  
4" x 6"



**The Old Dominion Colored Vocalists with the Gotthold Octoroon Combination, 1879.**

Prints and Photographs Division of the Library of Congress Online  
Catalog.  
9" x 12"



**Swell negro banjo player, 1875.**

Prints and Photographs Division of the Library of Congress Online  
Catalog.  
9" x 12"



**The Traveling Minstrel, 1905.**

Prints and Photographs Division of the Library of Congress Online  
Catalog.  
10" x 12"

# TRANSFORMATION!

African American Theater 1821-1921  
From African Grove Theatre to Shuffle Along  
January 31 - February 28, 2022



**Der'll be wahn coons a prancin, 1898.**

Yale Collection of American Literature, Beinecke Rare Book and Manuscript Library.

9" x 12"



**Original Georgia Minstrels are coming, 1876.**

Prints and Photographs Division of the Library of Congress Online Catalog.

16" x 20"



**Ginger blue, a popular Negro melody, composed & sung by Mr. R.W. Pelham / Fleetwood lith, 1841.**

Prints and Photographs Division of the Library of Congress Online Catalog.

9" x 12"



**Who dat say chicken in dis crowd, 1898.**

Performing Arts Encyclopedia of the Library of Congress Online Catalog.

9" x 12"



**The celebrated Congo minstrels' songs / Thayer & Co's lith, Boston, 1844.**

Prints and Photographs Division of the Library of Congress Online Catalog.

9" x 12"



**Hyde & Behman's Operatic Spectacular Minstrels under the personal supervision of Richard Hyde direct from their own beautiful theatre, Brooklyn, New York, 1884.**

Prints and Photographs Division of the Library of Congress Online Catalog.

13" x 36"



**Fourteenth appearance in this country of the celebrated New Orleans Ethiopian Serenaders, 1847.**

Prints and Photographs Division of the Library of Congress Online Catalog.

12" x 24"

# TRANSFORMATION!

African American Theater 1821-1921  
From African Grove Theatre to Shuffle Along  
January 31 - February 28, 2022



**Bob Cole, George Walker and Ernest Hogan, 1875.**  
James Weldon Johnson Collection in the Yale Collection of American Literature, Beinecke Rare Book and Manuscript Library.  
10" x 10"



**Bob Cole With Stella Wiley, 1875.**  
James Weldon Johnson Collection in the Yale Collection of American Literature, Beinecke Rare Book and Manuscript Library.  
8" x 10"



**Bob Cole and Stella Wiley (faces), 1875.**  
James Weldon Johnson Collection in the Yale Collection of American Literature, Beinecke Rare Book and Manuscript Library.  
8" x 10"



**Bob Cole and his wife, Stella Wiley, 1905.**  
James Weldon Johnson Collection in the Yale Collection of American Literature, Beinecke Rare Book and Manuscript Library.  
8" x 10"



**Bob Cole Seated, 1905.**  
James Weldon Johnson Collection in the Yale Collection of American Literature, Beinecke Rare Book and Manuscript Library.  
8" x 10"



**Photograph of Bob Cole and J. Rosamond Johnson, 1905.**  
James Weldon Johnson Collection in the Yale Collection of American Literature, Beinecke Rare Book and Manuscript Library.  
8" x 10"



**Bob Cole and J. Rosamond Johnson dancing, 1907.**  
James Weldon Johnson Collection in the Yale Collection of American Literature, Beinecke Rare Book and Manuscript Library.  
8" x 10"

# TRANSFORMATION!

African American Theater 1821-1921  
From African Grove Theatre to Shuffle Along  
January 31 - February 28, 2022



## **Bob Cole and J. Rosamond Johnson singing, 1907**

James Weldon Johnson Collection in the Yale Collection of American Literature, Beinecke Rare Book and Manuscript Library.  
8" x 10"



## **James Weldon Johnson with Bob Cole and Rosamond Johnson, 1904.**

James Weldon Johnson Collection in the Yale Collection of American Literature, Beinecke Rare Book and Manuscript Library.  
8" x 10"



## **Bob Cole, James Weldon Johnson, and J. Rosamond Johnson, 1900.**

Schomburg Center for Research in Black Culture, Photographs and Prints Division, New York Public Library.  
9" x 10"



## **Tell Me Dusky Maiden, 1901.**

Music Division, New York Public Library.  
9" x 12"



## **Photo of Bob Cole, 1898.**

8" x 10"



## **"Chicken" Cole and Johnson Music Sheet, 1899.**

Representations of Blackness in Music of the United States Collection of Brown Digital Repository.  
9" x 12"

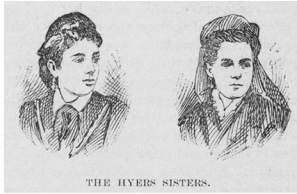


## **Cole and Johnson "Won't you be my little brown bear; The Shoo-fly regiment," 1907.**

James Weldon Johnson Collection in the Yale Collection of American Literature, Beinecke Rare Book and Manuscript Library.  
9" x 12"

# TRANSFORMATION!

African American Theater 1821-1921  
From African Grove Theatre to Shuffle Along  
January 31 - February 28, 2022



## The Hyers Sisters, 1893.

Schomburg Center for Research in Black Culture, Manuscripts, Archives and Rare Books Division, New York Public Library.  
8" x 10"



## Anna Madah Hyers in a scene, 1880.

Miriam Matthews Photograph Collection of Open UCLA Collections.  
11" x 14"



## Emma Louise Hyers, in a scene, 1880.

Miriam Matthews Photograph Collection of OpenUCLA Collections.  
11" x 17"



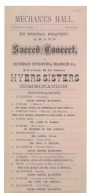
## Out of Bondage Etching, 1877.

National Portrait Gallery, Smithsonian Institution.  
16" x 20"



## Broadside for the musical drama "Out of Bondage", 1876.

Collection of the Smithsonian National Museum of African American History and Culture.  
16" x 36"



## Mechanics Hall. ... Special request. Grand sacred concert ... March 21, [1875] ... by the famous Hyers Sisters Combination. Programme.

National Portrait Gallery, Smithsonian Institution.  
16" x 36"



## The Seattle Republican, March 08, 1907.

Chronicling America: Historic American Newspapers. Lib. of Congress.  
11" x 17"



# TRANSFORMATION!

African American Theater 1821-1921  
From African Grove Theatre to Shuffle Along  
January 31 - February 28, 2022



**Black Patti, Mme. M. Sissieretta Jones , 1899.**  
Library of Congress Prints and Photographs Division Washington, D.C..  
21" x 32"



**Image 1 of The Washington Bee, May 14, 1898.**  
Library of Congress Serial and Government Publications Division.  
11" x 17"



**Matilda Sissieretta Jones, by Napoleon Sarony, 1895.**  
National Portrait Gallery, Smithsonian Institution.  
9" x 12"



**The Seattle Republican, November 22, 1901, Image 2.**  
Chronicling America: Historic American Newspapers. Library of Congress.  
6" x 12"



**The Saint Paul globe page 10, January 03, 1897.**  
Chronicling America: Historic American Newspapers. Library of Congress.  
16" x 21"



**Sisseretta Jones from Sparkling Gems of Race Knowledge Worth Reading by James T. Haley**  
6" x 8"



**Afro American Historical Record, James M. Vickroy.**  
James M. Vickroy, 1899. Chromolithograph on paper.  
18" x 24"

# TRANSFORMATION!

**African American Theater 1821-1921**  
**From African Grove Theatre to Shuffle Along**  
January 31 - February 28, 2022



**The Black Patti Troubadours, who appeared at the Third Avenue Theater, Seattle, in December 1904.**

J. Willis Sayre Collection of Theatrical Photographs at the University of Washington.  
16" x 20"



**Sissieretta: Women of Distinction etching.**

Women of Distinction by L.A. Scruggs.  
8" x 12"



**Sissieretta by Theodore C. Marceau, 1909.**

J. Willis Sayre Collection of Theatrical Photographs at the University of Washington.  
8" x 10"



**Sissieretta by Napoleon Saorony.**

White Studios  
9" x 12"



**Sissieretta Jones (1869 - 1933)**

James M. Vickroy, 1899. Chromolithograph on paper.  
8" x 10"



**Ada (Aida) Overton Walker, half-length portrait, facing left / White, N.Y., 1912.**

Library of Congress Prints and Photographs Division.  
8" x 10"



**Walker, Aida; Walker, George (Image 64), 1905.**

Yale Beinecke Rare Book and Manuscript Library. .  
8" x 10"

# TRANSFORMATION

African American Theater 1821-1921  
From African Grove Theatre to Shuffle Along  
January 31 - February 28, 2022



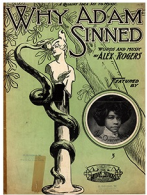
**Walker, Aida; Walker, George (Image 84), 1905.**  
Yale Beinecke Rare Book and Manuscript Library.  
8" x 10"



**Image 5 of The Washington bee (Washington, D.C.), 1910.**  
Chronicling America: Historic American Newspapers. Library of Congress.  
12" x 18"



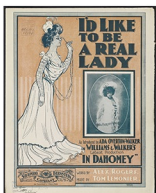
**Walker, Aida; Walker, George (Image 86).**  
Yale Beinecke Rare Book and Manuscript Library.  
9" x 12"



**Aida Overton Walker "Why Adam Sinned," 1904.**  
David M. Rubenstein Rare Book & Manuscript Library at Duke University.  
9" x 12"



**Aida Overton Walker "I'll keep a wam spot in my heart for you; Abyssinia," 1906.**  
David M. Rubenstein Rare Book & Manuscript Library at Duke University.  
9" x 12"



**Aida Overton Walker "I'd like to be a real lady," 1902.**  
Library of Congress Music Division.  
9" x 12"



**Aida Overton Walker signed image, 1907-08.**  
Yale Beinecke Rare Book and Manuscript Library.  
9" x 12"

# TRANSFORMATION!

## African American Theater 1821-1921 From African Grove Theatre to Shuffle Along January 31 - February 28, 2022



**Porto Rico : rag intermezzo / composed by Ford T. Dabney, 1905.**

Yale Beinecke Rare Book and Manuscript Library.  
12" x 9"



**Walker, Aida; Walker, George (Image 84), 1905.**

Yale Beinecke Rare Book and Manuscript Library.  
8" x 10"



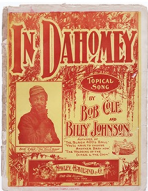
**Walker, Aida; Walker, George (Image 84), 1905.**

Yale Beinecke Rare Book and Manuscript Library.  
8" x 10"



**Walker, Aida; Walker, George (Image 84), 1905.**

Yale Beinecke Rare Book and Manuscript Library.  
8" x 10"



**Walker, Aida; Walker, George (Image 84), 1905.**

Yale Beinecke Rare Book and Manuscript Library.  
8" x 10"



**Walker, Aida; Walker, George (Image 84), 1905.**

Yale Beinecke Rare Book and Manuscript Library.  
8" x 10"



**Walker, Aida; Walker, George (Image 84), 1905.**

Yale Beinecke Rare Book and Manuscript Library.  
8" x 10"

# TRANSFORMATION

African American Theater 1821-1921  
From African Grove Theatre to Shuffle Along  
January 31 - February 28, 2022



**In Dahomey programme Mid June, 1903.**

20" x 13.5"



**Cast of the stage production Shuffle Along, 1921.**

New York Public Library Billy Rose Theater

10" x 12"



**Costume publicity photo, 1921.**

New York Public Library Billy Rose Rose Theatre Division

10" x 12"



**Publicity photo from the stage production Shuffle Along, 1921.**

New York Public Library Billy Rose Theater

10" x 12"



**Scene from Shuffle Along (blackface) 1921.**

New York Public Library Billy Rose Theater

10" x 12"



**Scene from Shuffle Along, girl in line, 1921.**

New York Public Library Billy Rose Theater

10" x 12"



**Shuffle Along keysheet, 1921.**

New York Public Library Billy Rose Theater

10" x 12"

# TRANSFORMATION

African American Theater 1821-1921  
From African Grove Theatre to Shuffle Along  
January 31 - February 28, 2022



## Shuffle Along Sheet Music, 1921.

Beinecke Rare Book Rare Book and Manuscript Library,  
Yale University  
9" x 12"



## Lyricist Noble Sissle and cast members , 1921.

Beinecke Rare Book Rare Book and Manuscript Library,  
Yale University  
9" x 12"



## Bandanna Land Sheet Music Cover, 1908.

David M. Rubenstein Rare Book & Manuscript Library ,  
Duke University  
9" x 12"



## Lime Kiln field day cast, 1913.

Beinecke Rare Book Rare Book and Manuscript Library,  
Yale University  
9" x 12"



## Cast and crew from Lime Kiln Field Day, 1913.

Museum of Modern Art (MoMA)  
10" x 14"



## Bert Williams advertising blotter, 1920.

Harvard Houghton Library  
10" x 21"



## Bert Williams #31, 1921.

Prints and Photograph Division of the Library of Congress  
Online Catalog  
8" x 10"

# TRANSFORMATION!

African American Theater 1821-1921  
From African Grove Theatre to Shuffle Along  
January 31 - February 28, 2022



**Bert Williams #16, 1920.**

Prints and Photographs Division of the Library of Congress Online  
Catalog  
8"x10"



**Walker Smiling Portrait, 1903.**

Beinecke Rare Book and Manuscript Library, Yale University  
8"x10"



**Walker (full body 5), 1903.**

Beinecke Rare Book and Manuscript Library, Yale University  
8"x10"



**Williams and Walker "When the Moon Shines," 1904.**

David M. Rubenstein Rare Book & Manuscript Library,  
Duke University  
12"x9"



**Williams and Walker Business Card, 1900 - 1910.**

Beinecke Rare Book and Manuscript Library, Yale University.  
4"x6"



**Waker, George (full body 2), 1903.**

Beinecke Rare Book and Manuscript Library, Yale University.  
8"x10"



**Waker, George (full body 3), 1903.**

Beinecke Rare Book and Manuscript Library, Yale University.  
8"x10"

# TRANSFORMATION!

African American Theater 1821-1921  
From African Grove Theatre to Shuffle Along  
January 31 - February 28, 2022



**Walker, George on stairs, 1903.**

Beineck Rare Book and Manuscript Library, Yale University  
8"x10"



**Williams and Walker in drag, 1903.**

Beineck Rare Book and Manuscript Library, Yale University  
8"x10"



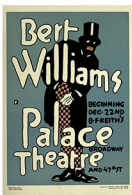
**"I'm a Jonah Man" Williams and Walker Cover, 1903.**

M. Witmark & Sons, New York  
9"x12"



**Bert Williams blackface smoking, 1903.**

Photographs and Print Division of the Library of Congress  
Online Catalog  
8"x10"



**Bert Williams Palace Theatre poster, 1903.**

Bowles, J. M. , ed. (1918) Some Examples of the Work of American Designers, Philadelphia, New York, Boston: Dill & Collins Co.  
28"x19"



**Bert Williams arm crossed, 1903.**

Beinecke Rare Book and Manuscript Library, Yale University  
10"x8"



**Bert Williams leaning forward, 1903.**

Beinecke Rare Book and Manuscript Library, Yale University  
1903



# TRANSFORMATION!

## African American Theater 1821-1921 From African Grove Theatre to Shuffle Along January 31 - February 28, 2022



**Bert Williams (and George Walker) 62, 1902.**  
Beinecke Rare Book and Manuscript Library, Yale University  
10"x8"



**Bert Williams and George Walker in black face, 1902.**  
Beinecke Rare Book and Manuscript Library, Yale University  
10"x8"



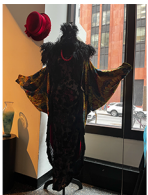
**Bert Williams 55, 1903.**  
Beinecke Rare Book and Manuscript Library, Yale University  
10"x8"



**Bert Williams portrait, 1903.**  
Beinecke Rare Book and Manuscript Library, Yale University  
10"x8"



**The Dragon Dress,**  
Luke McDonough, Costume Director, The Public Theater



**Black Dress with Cape**  
Toni Leslie-James, Costume Designer.  
Made by Barbara Matera, Ltd.  
Worn by Eartha Kitt in *The Wild Party*.  
Courtesy of Luke McDonough, Costume Director, The Public Theater.



**Costume from Shuffle Along, 2016.**  
Ann Roth, Costume Designer.  
Worn by Lisa La Touche in *SHUFFLE ALONG, OR THE MAKING OF THE MUSICAL SENSATION OF 1921 AND ALL THAT FOLLOWED*.  
Courtesy of Lisa La Touche.

# TRANSFORMATION!

**African American Theater 1821-1921**  
**From African Grove Theatre to Shuffle Along**  
January 31 - February 28, 2022



## **Flapper Dress,**

Toni Leslie, Costume Designer.

Made by Barbara Matera, Ltd.

Worn by Toni Collette in *The Wild Party*.

Courtesy of Luke McDonough, Costume Director, The Public Theater.



## **Black Silk Dress with Fur Shawl**

Clint Ramos, Costume Designer.

Made by John Kristiansen New York.

Worn by Annaleigh Ashford in *A Midsummer Night's Dream*.

Loaned by Luke McDonough, Costume Director, The Public Theater.



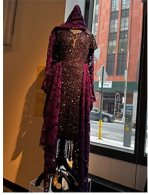
## **Silver Evening Dress**

Clint Ramos, Costume Designer.

Made by John Kristiansen New York.

Worn by Sholita Grant in *A Midsummer Night's Dream*.

Courtesy of Luke McDonough, Costume Director, The Public Theater.



## **Purple Dress**

Gregory J. Horton, Costume Designer.

Worn by Charlaine Woodard character in *AIN'T MISBEHAVIN'* at North Carolina A&T University.