

A hiker wearing a brown hat, a brown jacket, and a large backpack is walking away from the viewer on a rocky mountain trail. The hiker is holding a trekking pole. The background features a vast, hazy mountain range under a blue sky with scattered white clouds. The foreground shows green grass and large grey rocks.

Exploring AI in Higher Education

AJ Barse, M.Ed

Instructional Technologist, ATUS Learning Systems

2024 September



A person and a robot are walking away from the viewer down a futuristic, circular tunnel. The tunnel is illuminated with warm orange and yellow lights on the left and cool blue and teal lights on the right. The walls of the tunnel are covered in intricate, glowing patterns that resemble circuitry or data lines. The person is on the left, and the robot is on the right, holding hands. The robot has a metallic, humanoid form with a glowing blue light on its chest.

I USED AI TO MAKE PARTS OF THIS
PRESENTATION

IT SAVED ME TIME...AT TIMES

BUT THE IDEAS I SHARE ARE ALL MINE.

AND THE TIME IT SAVED ME,
I SPENT MAKING THIS BETTER.

Trail Guide

WHAT IS THE BUZZ ABOUT AI?

UNDERSTANDING HOW STUDENTS MAY UTILIZE AI

WHAT IS THE BUZZ ON AI AT WWU?

APPS AND SOFTWARE USING AI

HOW SHOULD I USE IT IN COURSES AND THE CLASSROOM?

- AI & PLAGIARISM AND POLICIES
- PATHWAY

Barriers / Challenges / Advantages of AI

AI Use Presentation Disclosures

AI Images generated in [Adobe Firefly](#) containing C2PA information

AI video generated in [Colossyan](#)

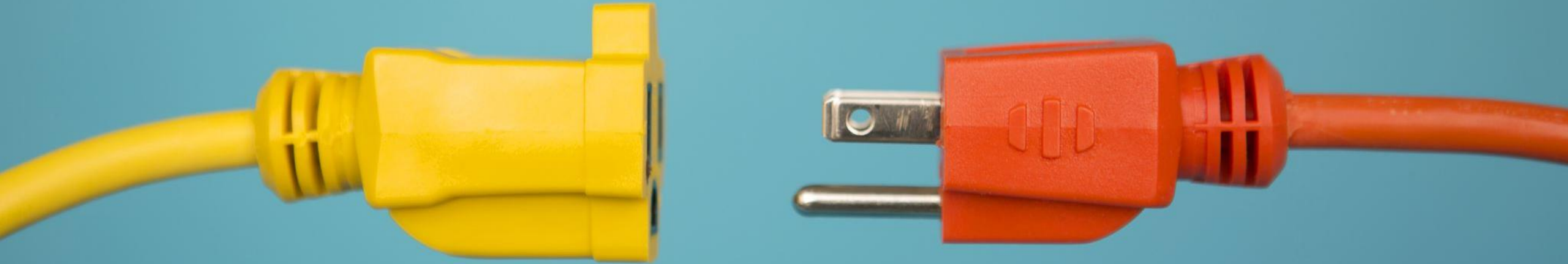
Stock Images provided by Microsoft Stock for PowerPoint





SO...
WHAT DO Y'ALL
KNOW ABOUT AI?

THE BUZZ



AROUND AI

A hand holding a blue Ethernet cable connector against a background of blurred colorful cables. The text is overlaid on this image.

Data ISN'T Free ...and neither is AI

That's what makes them an LLM,
Large Language Model

ETHICS & LEGAL DISPUTES

← All Open Letters

Pause Giant AI Experiments: An Open Letter

We call on all AI labs to immediately pause for at least 6 months the training of AI systems more than GPT-4.

Signatures

1187

Add your signature



Coalition for
Content Provenance
and Authenticity

About

FAQ

An open technical standard providing publishers, creators, and consumers the ability to trace the origin of different types of media.



Content credentials provide confident information about the image's history and origin.

Created with Adobe Firefly
May 30, 2024 at 10:03 AM

FTC sets its sights on AI

The FTC, to its credit, has been thinking out loud about the potential dangers. In a [series of blog posts](#) released in recent months, the agency says that “AI-powered ‘deep media’ can make it more difficult to parse out what’s real online, a potential to deceive people en masse.

“Evidence already exists that fraudsters can use these tools to generate and disseminate disinformation to large groups or targeting certain communities or individuals.”

Those concerns, however, fall far short of the potential society-level crisis depicted in the letter released this week by the Future of Life Institute. AI experts, both those who [signed the letter](#) and others who did not, expressed deep divisions in the level of concern about future LLM models. Though almost all concerned AI researchers agree policymakers need to catch up and draft smart rules and regulations to guide AI’s development, minds are split when it comes to ascribing human-level intelligence to what are essentially extremely good guessers trained on potentially trillions of parameters.

“What we should be concerned about is that this type of hype can both over-exaggerate the capabilities of AI systems and distract from pressing concerns like the deep dependency of this wave of AI on a small handful of firms,” AI Now Institute Managing Director Sarah Myers West previously told Gizmodo.



IMPACT ON ARTISTS and creatives

LAW

Tennessee becomes the first state to protect musicians and other artists against AI

MARCH 22, 2024 · 5:50 AM ET

By Rebecca Rosman



Country music star Luke Bryan gives a fist bump to Gov. Bill Lee before signing a law in Nashville, Tenn.

An Open Letter to Big Tech (FAANG):

Social Media User's Data is Not Your Data to Use for AI Training.

Accept Overlai's Watermarks and Universal Opt-Out Solution

A creator forward request to big tech for responsible AI

We, the social media users, the creators and proponents of Overlai, a pioneering platform dedicated to safeguarding digital assets through innovative watermarking and opt-out mechanisms, address Meta™ and its platforms Facebook™ and Instagram™, YouTube™ / Google™, Reddit™, or other synonymous big tech (FANGG: Facebook™, Amazon™, Apple™, Netflix™ and Alphabet's Google™), with a shared commitment to fostering responsible content sharing practices and upholding the integrity of intellectual property rights on your platforms.

Introduction

Sign The Open Letter
"Respect my data, don't use it for AI"
respect copyright
OUT OF CONTROL

First Name *

Last Name *

Email *

Company

Add Your Organization

I agree to Overlai's terms and conditions.
 I opt out and I will not be contacted for future progressions.

IS AI BIASED?



The Analytical Engine has no pretensions whatever to originate anything. It can do whatever we know how to order it to perform. It can follow analysis; but it has no power of anticipating any analytical relations or truths.

Ada Lovelace

First Computer Programmer (1815–1852)

OR IS IT REFLECTING SOCIETY'S DATA IT'S BEING FED?

What defines "creative" now?



AUTOMATION
creation
generation





“Generative”

Or....

Plagiarism?

Academic Dishonesty?

Cheating?

Copyright infringement?

Evolution of draft writing?



Give me a 4 paragraph essay on the history of Ada Lovelace



Ada Lovelace was a pioneering mathematician and writer who is often credited with being the world's first computer programmer. She was born on December 10, 1815, in London, England, the only legitimate daughter of the poet Lord Byron and his wife, Annabella Milbanke. Ada's mother, a mathematician, was determined to provide her daughter with a rigorous education in science and mathematics.



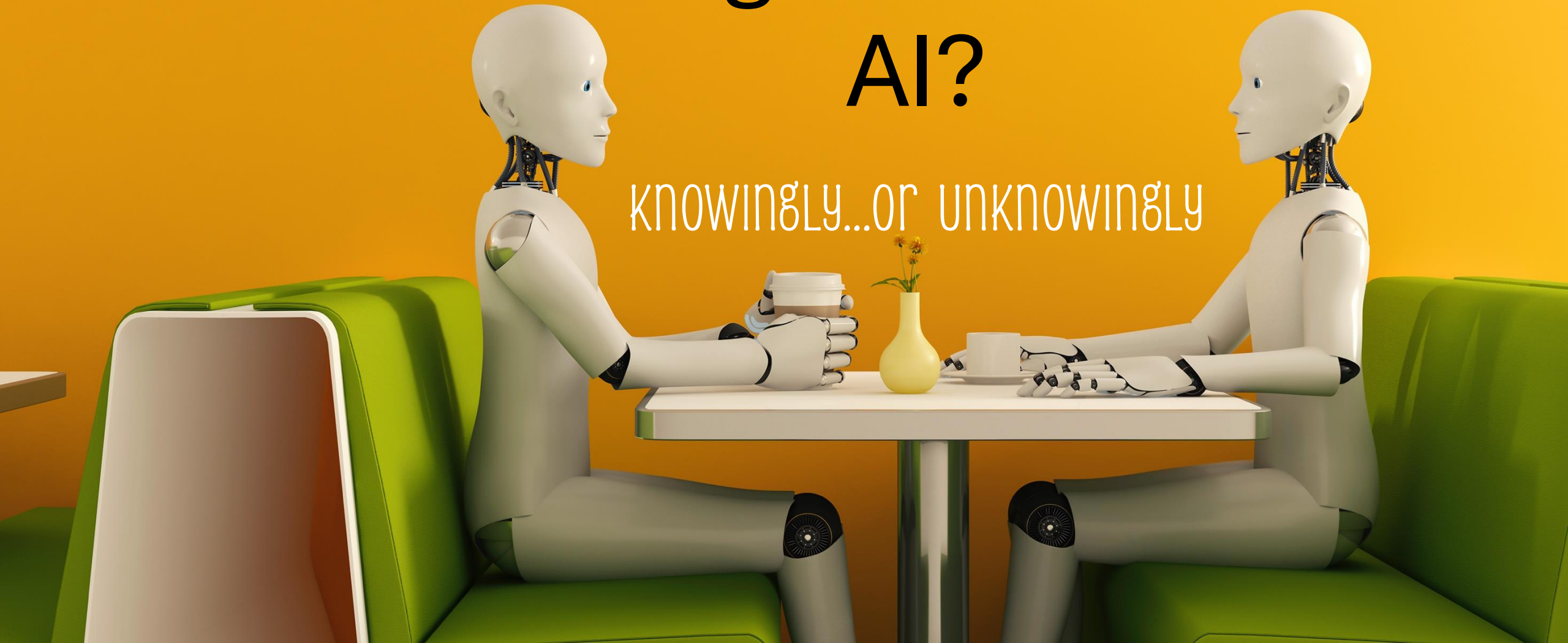
By the age of 17, Ada had become fascinated with the work of Charles Babbage, a British mathematician and inventor who designed a machine called the Analytical Engine. Ada corresponded with Babbage and began to write notes about the machine, which demonstrated her keen insight into the potential of computing. Her work on the Analytical Engine is now regarded as groundbreaking and visionary.

In 1843, Ada published her most famous work, a set of notes on the Analytical Engine that included a description of how the machine could be programmed using what she called "the language of signs." Ada's notes are now considered to be the first computer program, and they helped to establish the idea that machines could be programmed to perform a wide range of tasks.

Ada's contributions to computing were largely forgotten for many years, but in the 20th century, her work was rediscovered and she became recognized as a pioneer of computer science. Her legacy continues to inspire women in STEM fields, and she is remembered as a visionary mathematician and writer who helped to shape the future of computing.

How might students use AI?

KNOWINGLY...OR UNKNOWINGLY



SO...

HOW DO YOU THINK
STUDENTS USE AI?

WHAT ARE YOUR
FEELINGS ABOUT
STUDENTS USING AI?



IT IS NOT a
MATTER OF IF, OR
WHEN AI IS
COMING...

...IT'S ALREADY
HERE

Copilot+ PCs

A new AI era begins

The fastest, most intelligent Windows PCs ever. Explore Copilot+ PCs, a new class of AI PCs and laptops.

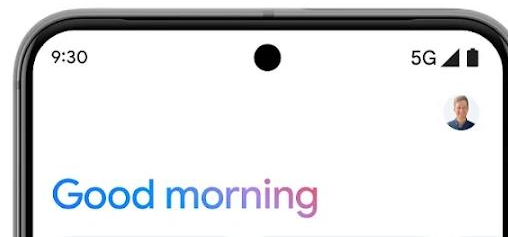
[Shop Copilot+ PCs](#)

[Watch the video >](#)



Copilot+ PC

Try **Gemini**,
your new AI assistant



Apple Intelligence

AI for the rest of us.

Coming in beta this fall*



TEXT TO PODCAST

Speech Central
Eleven Labs Reader

warmth of returning circulation.

'Better?" the man asked, smiling.

Rudi nodded. And finally he was able to speak again. "And you, sir," he said, "you are all right?"

The man nodded. He was warming himself now: flapping his arms and kicking his feet together. "A few minutes of sun and I'll be as good as new."

Nearby, a black boulder lay embedded in the glacial ice, and, going over to it, they sat down. The sunlight poured over them like a warm bath. Rudi slowly flexed his aching fingers and saw that the man was doing the same. And then the man had raised his eyes and was looking at him.

'It's a miracle how you did it," he said. "A boy of your size. All alone."

'It was nothing," Rudi murmured.

'Nothing?"

'I—I only—"

'Only saved my life," said the man.

For the first time, now, Rudi was really seeing him. He was a man of perhaps



Cinderella

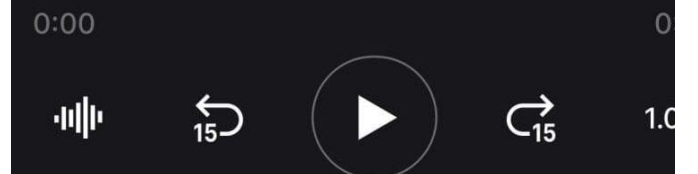
Brothers Grimm

June 24th, 2024

CINDERELLA

by Jacob Grimm and Wilhelm Grimm

The wife of a rich man fell sick: and when she felt that her end drew nigh, she called her only daughter to her bedside, and said, "Always be a good girl, and I will look down from heaven and watch over you." Soon afterwards she shut her eyes and died, and was buried in the garden; and the little girl went every day to her grave and wept



SUMMARIZE OR WRITE THAT...

ChatGPT
GrammarlyGO

Bit stressed, so I'm in a pinch. I need a quick bio on Justina Brown at Western Washington University. Give me some of the background that she has and what she's really badass at.

Justina Brown is a Senior Instructional Designer at the Center for Instructional Innovation and Assessment (CIIA) at Western Washington University. With a Master of Education degree, she has extensive experience in instructional design and educational technology. Justina excels in one-on-one instructional design consultations, strategies for teaching and learning, and integrating educational technologies into pedagogy. She's known for her expertise in using Canvas for instructional needs and her dedication to promoting best practices in teaching and learning. She's a key figure in the Learning Systems team, collaborating closely with faculty and staff to enhance the academic experience.

add to memory

Subject: Re: September 16th Ret

Times New Ro... 12

Human Ser
September 16th
Hille
1717 S. 13th Street, M
You can log in
<https://www.mapquest.com/direction>

Bring a laptop or let Christina or Mis

Objectives:
As a result of this retreat, Faculty wil

1. Discover and identify teaching

Shorten it

Human Services Program Retreat
September 16th, 2024, 9:30 am to 2:30 pm
Hillcrest Park Lodge
1717 S. 13th Street, Mount Vernon, Washington
Please log in for driving directions here:
<https://www.mapquest.com/directions/to/us/wa/mt-vernon/98274-5355/1717-s-13th-st>

Agenda

- Sound professional
- Make it assertive
- More ideas

Tell us to...

Draft saved just now

A hiker with a backpack is seen from behind, standing on a rocky trail and looking out over a vast, layered mountain range. The scene is captured in a cinematic style with soft lighting, suggesting either dawn or dusk. The mountains in the distance are hazy, while the foreground shows green vegetation and large rocks. The entire image is framed by a white, hand-drawn style border.

FRICITION is a part of the
Learning process

THE BUZZ



AROUND AI at WWU

Number:
EA-01-03-G was 171.03.G

[Home](#) / [Policies](#)

/ [Interim Guidelines For Purposeful And Responsible Use Of Generative Artificial Intelligence \(AI\) In Washington State Government](#)

Policy

[Definition of Terms Used in Policies and Reports](#)

Interim Guidelines for Purposeful and Responsible Use of Generative Artificial Intelligence (AI) in Washington State Government

Number: EA-01-03-G was 171.03.G

Purpose

The rapid advancement of generative artificial intelligence (AI) has the potential to transform government business processes, changing how state employees perform their work and ultimately improving government efficiency. These technologies also pose new and challenging considerations for implementation. These guidelines are meant to encourage purposeful and responsible use of generative AI to foster public trust, support business outcomes, and ensure the ethical, transparent, accountable, and responsible implementation of this technology. This document serves as an initial framework for the responsible and ethical use of generative AI technologies within the Washington state government. Recognizing the rapidly evolving nature of AI, these guidelines will be periodically reviewed and updated to align with emerging technologies, challenges, and use cases.

WA STATE CIO

INTERIM GUIDELINES
FOR STATE EMPLOYEES

Number:

EA-01-03-G was 171.03.G

WA STATE CIO

INTERIM GUIDELINES FOR STATE EMPLOYEES

(5 pages)

Disclosure and Attribution

- AI-generated content used in official state capacity should be clearly labeled as such, and details of its review and editing process (how the material was reviewed, edited, and by whom) should be provided. *(Transparent authorship)*
- State personnel should conduct due diligence to ensure no copyrighted material is published...this includes content generated by AI systems, which could inadvertently infringe copyright.

Sensitive or Confidential Data

- Agencies are strongly advised not to integrate, enter, or otherwise incorporate any non-public data (non-Category 1 data) or information into publicly accessible generative AI systems (e.g., ChatGPT). *(Personal Identifiable Information)*

Compliance with Policies and Regulations

- [RCW 42.52.050](#) (the state's ethics law) : "No state officer or state employee may disclose confidential information to any person not entitled or authorized to receive the information," including commercial generative AI tools freely available in the market. ...generative AI system may result in creating a public record under Washington state's Public Records Act.

FAQS: GENERATIVE AI GUIDELINES

Updated August 16, 2024

ATUS and Learning Systems are exploring how generative artificial intelligence tools, such as ChatGPT, are being used in higher education. We are coordinating with relevant offices and entities as we continue to learn more about the implications for teaching, learning, technology, policies, and procedures. See also:

- [Academic Uses of AI for Students](#)
- [AI and Chatbots Teaching Considerations \(TLCo-op\)](#)
- [Evaluating Student Work when AI is Suspected](#)
- [Pathways for Academic Use of AI at WWU: Flowchart](#)
- See also: [AI Detection at Western](#) and [Plagiarism Detection at Western](#)



Generative AI for Students and Educators

Ready to harness the risks and rewards of generative artificial intelligence (AI)? This technology has revolutionized teaching and learning...

Continue reading: [Generative AI for](#)

WWU Resources

- Academic Honesty Office
 - [Academic Honesty Violation Information for Instructors](#)
 - [Academic Honesty Violation Information for Students](#)
- ATUS and Center for Instructional Innovation
 - [Academic Uses of AI for Students](#)
 - [AI and Chatbots Teaching Considerations \(TLCo-op\)](#)
 - [FAQs: Generative AI Guidelines](#)
 - [Pathways for Academic Use of AI at WWU: Flowchart](#)
 - [Plagiarism Detection at Western | AI Detection at Western](#)
- Disability Access Center
 - [DAC Resources for Faculty](#)
- Evaluating Student Work [When AI is Suspected](#)
- AJ Barse “[Digital Alchemy](#)” WWU Wordpress Blog

WWU DATG



Descriptive Alt Text Generator

[Apply](#) [Give](#) [Report Bias](#) [myWestern](#) [Jobs](#)

[Home](#) [Generate Alt Text](#) [Contact Us](#)

DESCRIPTIVE ALT TEXT GENERATOR (DATG)

Why Did We Create the DATG?

The intent of the design of the DATG, at its inception, was to create a tool that could help all content creators across Western Washington University (WWU) create more effective and engaging alt text without a bunch of frustration during the alt text creation process.

Please be aware that the results from these AI engines we use might not always be correct. Consider all responses from AI engines as a subjective idea rather than an objective truth. Verify your results from the AI engines before publishing results to the public.

How the DATG works

Upload an image file from your computer or link to an image. Linking to an image on the web is still a work in progress.

Quick Engage with the DATG

- **Sign In:** Open <https://datg.wvu.edu/> in your favorite browser.
- **Generate Alt Text:** Navigate to the "Generate Alt Text" element in the main navigation menu above.
- **File Upload:** Drag and drop a file from your device into the file area or select the 'Choose File' button to choose a file to evaluate.
- **Link To Image:** Input a direct link to an image on the web. This is a work in progress. We'll follow up with updates as we explore and experiment more.



Descriptive Alt Text Generator

[Home](#) [Generate Alt Text](#)

GENERATE ALT TEXT

Input An Image

< [File Upload](#) >

Name of File, please.

No file chosen

Advanced Options

▶ A place for individuals to store their individual settings.

[Evaluate Selected Image](#)

Results

<https://datg.wvu.edu/Generate.html>

SOFTWARE IN AI



ACADEMIC USES OF AI FOR STUDENTS

Updated 4/24/24

Note

Students must have absolute clarity from their instructors of appropriate use prior to using AI generators for course work.

Generative AI Product Comparison

The table below shows several free AI generator tools, whether they require accounts, their limits, and key characteristics. Products referenced may be used at your own risk and without specific endorsement by WWU.

Comparison Elements	ChatGPT by OpenAI	Copilot by Microsoft (a.k.a. Bing Chat)	Gemini by Google	Designer by Microsoft	FireFly by Adobe
Type	Text generator;	Text generator; internet	Text generator;	Image generator;	Image generator and

AI Usage and
Comparison
Chart

canvas LTI'S AI NUTRITION FACTS

AI Nutrition Facts



Canvas Smart Search

Description

Natural language search of course content for students and educators.

Model & Data

Base Model Cohere Embed Multilingual

Trained with User Data No

Data Shared with Model Course

Course content is indexed by the model and then stored in the Canvas database.

Privacy & Compliance

Data Retention

Data is not stored or reused by the model.

Data Logging Does Not Log Data

Regions Supported NORAM, EMEA, APAC, LATAM

Canada is not currently supported, but will be as soon as AWS supports the required model in its data centers there.

PII Not Exposed

PII in course content may be indexed, but no PII is intentionally sent to the model.

Outputs

AI Settings Control Yes

Human in the Loop Yes

Guardrails

Expected Risks

Search results may be incorrectly sorted or may not be relevant to the search term.

Intended Outcomes

Students are able to quickly find answers to questions, and instructors are able to quickly navigate their courses.

Instructure has developed nutrition fact labels for AI-enabled products to increase transparency and improve decision making.

AI Nutrition Facts



Canvas Discussion Summaries

Description

Discussion summaries of key points, questions, and insights.

Model & Data

Base Model Claude 3 Haiku

Trained with User Data No

Data Shared with Model Course

Discussion prompt and replies.

Privacy & Compliance

Data Retention

Data is not stored or reused by the model.

Data Logging Logs Data

Summaries are logged in the Canvas database for review and reuse.

Regions Supported NORAM, EMEA, APAC, LATAM

PII Not Exposed

PII in discussion replies may be sent to the model, but no PII is intentionally sent to the model.

Outputs

AI Settings Control Yes

Human in the Loop Yes

Instructors may regenerate summaries or fine-tune them with additional instructions.

Guardrails

Expected Risks

Summaries may not capture all desired information.

Intended Outcomes

Summaries allow discussion topics to be used in large-format courses and other environments where discussions were previously infeasible.

Instructure has developed nutrition fact labels for AI-enabled products to increase transparency and improve decision making.

CHATGPT WEB & APPS

Search

Engaging Title Suggestions

3 months ago

Canvas Help Is Amazing

6 months ago

Creative PNW Explorer

New chat

OER Discovery for Teachers

8 months ago

AI Detection: Metrics & Inter...

Civil Rights Act 1964

9 months ago

GPT Models Advancements...

Pros & Cons of Generative AI

AJ Barse

ChatGPT >

Chat with voice



Just start talking

Now you can have spoken conversations with ChatGPT.



Hands-free

Chat without having to look at your screen.



Chats are saved

View voice transcriptions in your history. Audio clips aren't stored.



Language is auto-detected

You can specify a preferred language in Settings for a more accurate detection.

Choose a voice

ChatGPT 4o >



Suggest a recipe idea for dinner
for a kid who doesn't like vegetables

Create a mar...
for someone v...



Meeting Notes
Word document



Product Ideas
Word document



Summarize key themes



Message



ADOBE creative CLOUD



Adobe Podcast (beta)

Mar 23, 2023 — by AJ
in AI, Instructional Design, Tech Research

The creative space has been heating up in recent weeks again with Adobe "FireFly" project and Microsoft "Designer". Putting aside the craze that was algorithmic generative images that were tied to blockchains, eg NFTs, DALLE and DALLE2 arguably started the renaissance that is currently generative-AI-based image creation. Services like MidJourney then taking the fidelity of...

what you're able to do is record directly into Adobe podcast, and then you get a transcript like we normally would for accessibility



Or for just a general transcript of what was said on your show.



reason.

Except now that is the method that you edit. You actually go in and edit by the word or by the break in the actual transcript. It's an interesting take on editing I haven't seen elsewhere, and it's a cool use of artificial intelligence in the case of using it in audio podcasting.



Now you're probably thinking, Well, AJ, what's the downside? Because there's going to be one. It's you.

Yep, you're right. There is. So the thing about the Adobe podcast Beta that still is a lot



Enhance Speech

Remove noise and echo from voice recordings



Studio BETA

Record, edit, and enhance in your browser



Mic Check

Fix microphone issues before recording



Get creative with Adobe Firefly

A heavenly sky full with ethereal, misty fluffy clouds with sparkles. Clear, bright blues, pur

Generate

ADOBE creative CLOUD

Text to image

General settings

Model: Firefly Image 3

Aspect ratio: Square (1:1)

Content type

Art Photo Auto

Composition

Reference

Upload image Browse gallery

Styles

Visual intensity

Strength

Reference

Upload image Browse gallery

Effects (1)

All Popular Movements Themes



Prompt

Create a retro-style postcard illustration featuring a woman from the 1950s enjoying an ice cream cone. She should have fair skin and wear a polka-dotted red bandana in her hair. Her makeup should include bright red lipstick, and she should be wearing vintage-style sunglasses from that era. The ice cream should be a classic swirl with a waffle cone. Use bold, flat colors and clean lines to evoke a nostalgic 1950s feel. Include a stylized sunburst background in pastel tones to complement the retro theme.

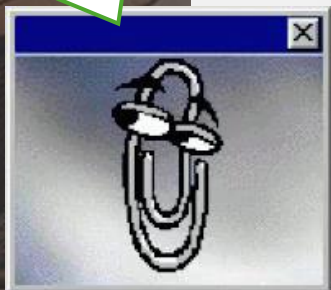
Clear Art x Cartoon x

Suggestions Try Prompt

WORDS...

CoPilot
GrammarlyGO
ChatGPT

Hi, AJ , It looks like you are writing an essay, do you need assistance?



Implications of AI in Teaching and Learning

What I wrote

What I AI and machine based learning modeling engines such as ChatGPT and Dall-E 2 has taken mainstream media by storm in recent months. Education has been trying to find, or fight, its uses in the classroom. Much like any new technology, it is a pandora's box that is already open and so we need to work around it and even leverage it for teaching and learning. This session is meant to ignite the discussion on where it can be helpful for learning, where policy can help set expectations, and even avenues where it could be a tool for teaching. It will also present a futurist view on where the technology could be adapted for the digital educator.

What QuillBot (with rephrasing)

In recent months, mainstream media has been captivated by artificial intelligence (AI) and machine-based learning modeling engines like ChatGPT and Dall-E 2. In the attempting to find or combat its uses. It's a Pandora's box that's already technology, so we need to find ways to get around it and even use it to teaching and learning. This session aims to spark a discussion about teaching tool, where policies can help set expectations, and where it Additionally, a futurist perspective on how technology might be modified will be presented.

What I submitted

In recent months, mainstream media has been captivated by artificial

- Paraphrase ⌘+Alt+P
- Summarize ⌘+Shift+S
- Suggest Text Ctrl+Shift+Spacebar
- Cut ⌘+X
- Copy ⌘+C
- Paste ⌘+V
- Paste without formatting ⌘+Shift+V
- Search 'In recent mont...' ⌘+Shift+F
- Add Citation ⌘+Shift+C

ZOOM AI COMPANION

Zoom Meetings 9:20 AM

Meeting Summary with AI Companion

Marketing Sync

Summary

Improving Brand Awareness with new Marketing Strategy

Julie met with Rob and Max to discuss the current state of the business and explore future plans to propel the company forward. Julie provided a comprehensive overview of the existing marketing strategy. With compelling data, she showcased the remarkable success the current strategy had achieved to boost brand awareness and drive impressive sales figures. Rob and Max were excited and appreciative of the outcomes that were presented.

Next Steps

- Julie to incorporate feedback and send newest version of the marketing strategy to Rob and Max tomorrow.
- Schedule follow up meeting next week to discuss competitive landscape.

[View More](#)

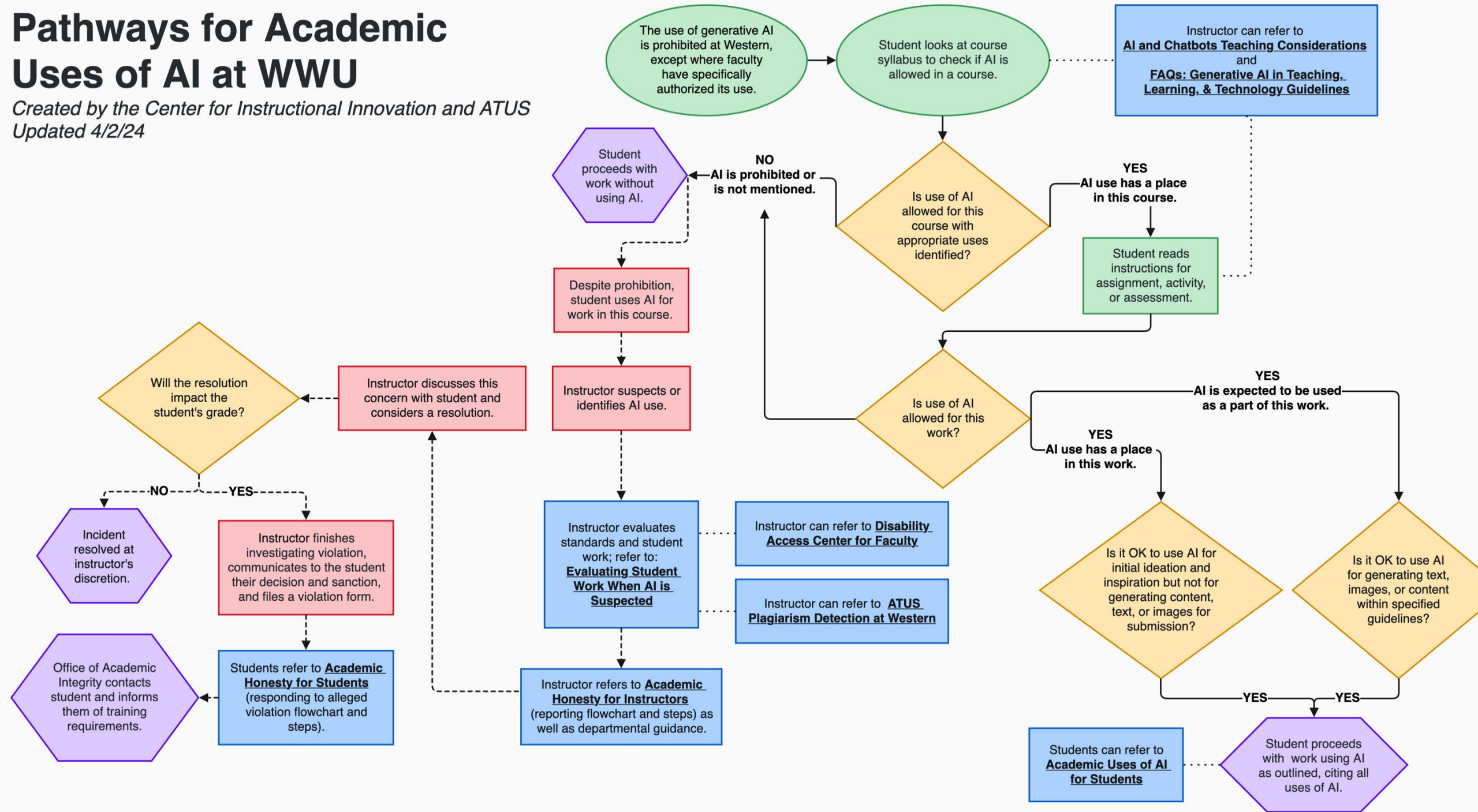


How should educators use,
or consider using AI,
in the classroom?

PRODUCT
VS
PROCESS
OF Learning

Pathways for Academic Uses of AI at WWU

Created by the Center for Instructional Innovation and ATUS
Updated 4/2/24





DESIGN CONSIDERATIONS

Provide clear academic honesty expectations.

Refer to University policies and your own in your syllabus & assignments. Provide a statement:

“Use of an AI text generator when an assignment does not explicitly call or allow for it without proper attribution or authorization is plagiarism.”¹

Consider projects that are multi-modal or collaborative.

Ask for process: drafts, notes, show your work. Incentivize showing the learning process/struggles.

Have students annotate existing content to show their thinking.

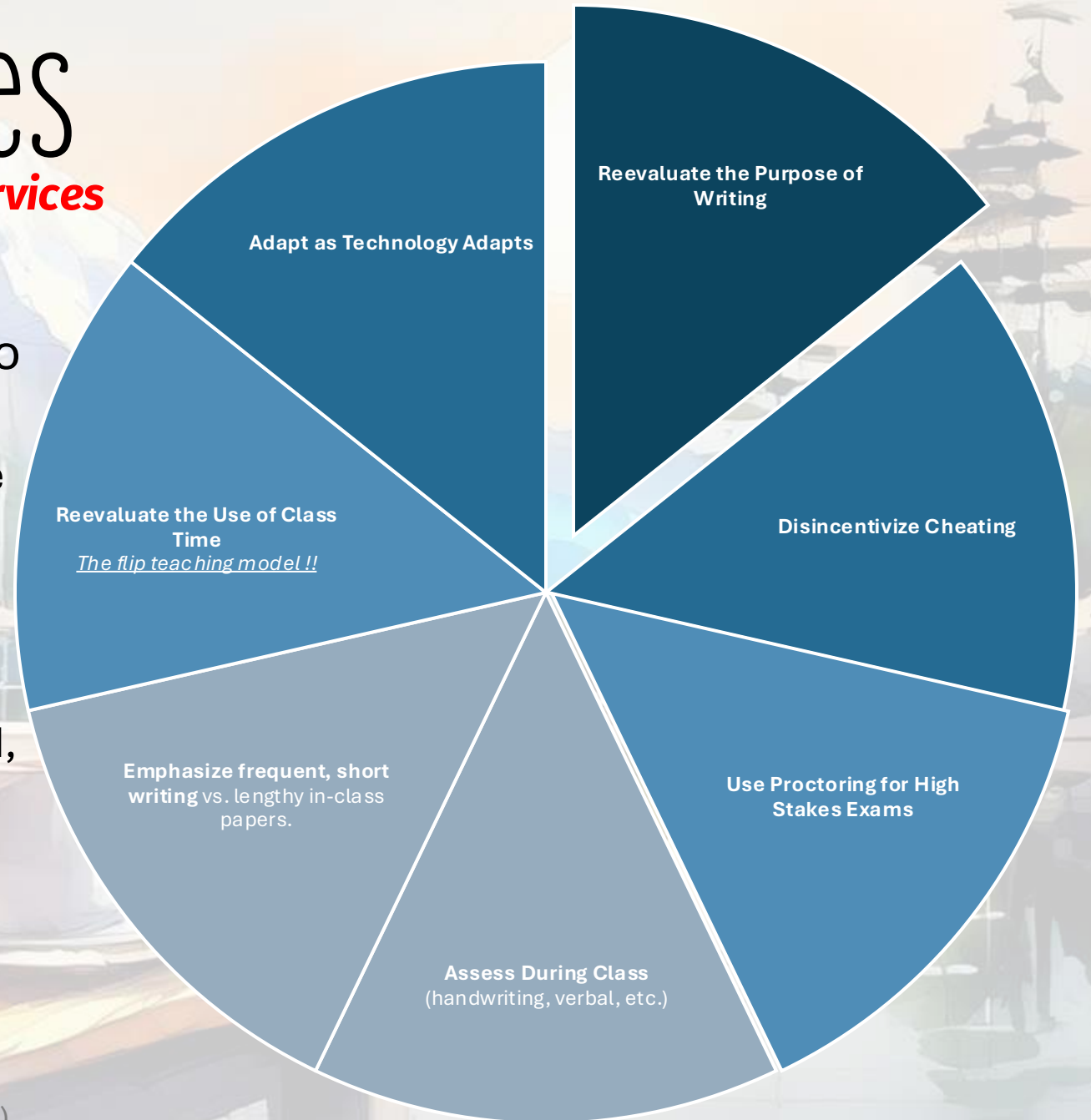
Watch for style & citation inconsistencies.

Be open and have conversations with your students and be up front within your syllabus

Reshaping Practices

...to “discourage” use of AI generation services

- Expression of purpose, the value, in writing, explaining why things matter to them.
 - Incorporate critical AI literacy to recognize its weaknesses and human strengths.
 - Tie course content to ethical concerns or to examples from students’ personal lives and their own growth.
 - When students are desperate or confused, they are more likely to cheat. Provide a framework for success and ensure workload is appropriate.



DEPENDING ON YOUR LEARNING OBJECTIVES...

Using AI and Chatbots as a Learning Tool

Customizing Learning

- Use as “online tutors,” with pre-tested prompts, to ensure equitable starting points in terms of prerequisite knowledge.
- Use as an extra challenge after engaging in a writing prompt to get virtual feedback.

Incorporating AI/Editing

- Have students incorporate an AI quote into writing, cited as 3rd party AI content.
- Have students create an effective prompt for an AI generator and then use track changes to show heavy editing of the generated text.
- Use as a way to break “writer’s block,” provide feedback on written copy or code, to help create a title with rephrase tools, or do a citation search for additional references.

Analysis

- Have students grade an AI-generated essay, providing feedback and analysis.
- Have a chatbot generate several conclusions to a conundrum or set of data, possibly using different voices/tonality and analyze them during class discussions.

Creativity

- Have students write an effective prompt to create an AI image or video to represent their thinking.
- Explore ways to use bots a virtual labs or virtual field trips.
- Have groups/pairs gather AI-generated topics, fact-check, add to, and share out to class.

[Artificial Intelligence Writing](#) - UCF

[Embrace the Bot in the Classroom](#) - Medium

[AI...Considerations for Course Design](#) - Illinois State Univ.

Barriers...
CHALLENGES...
ADVANTAGES



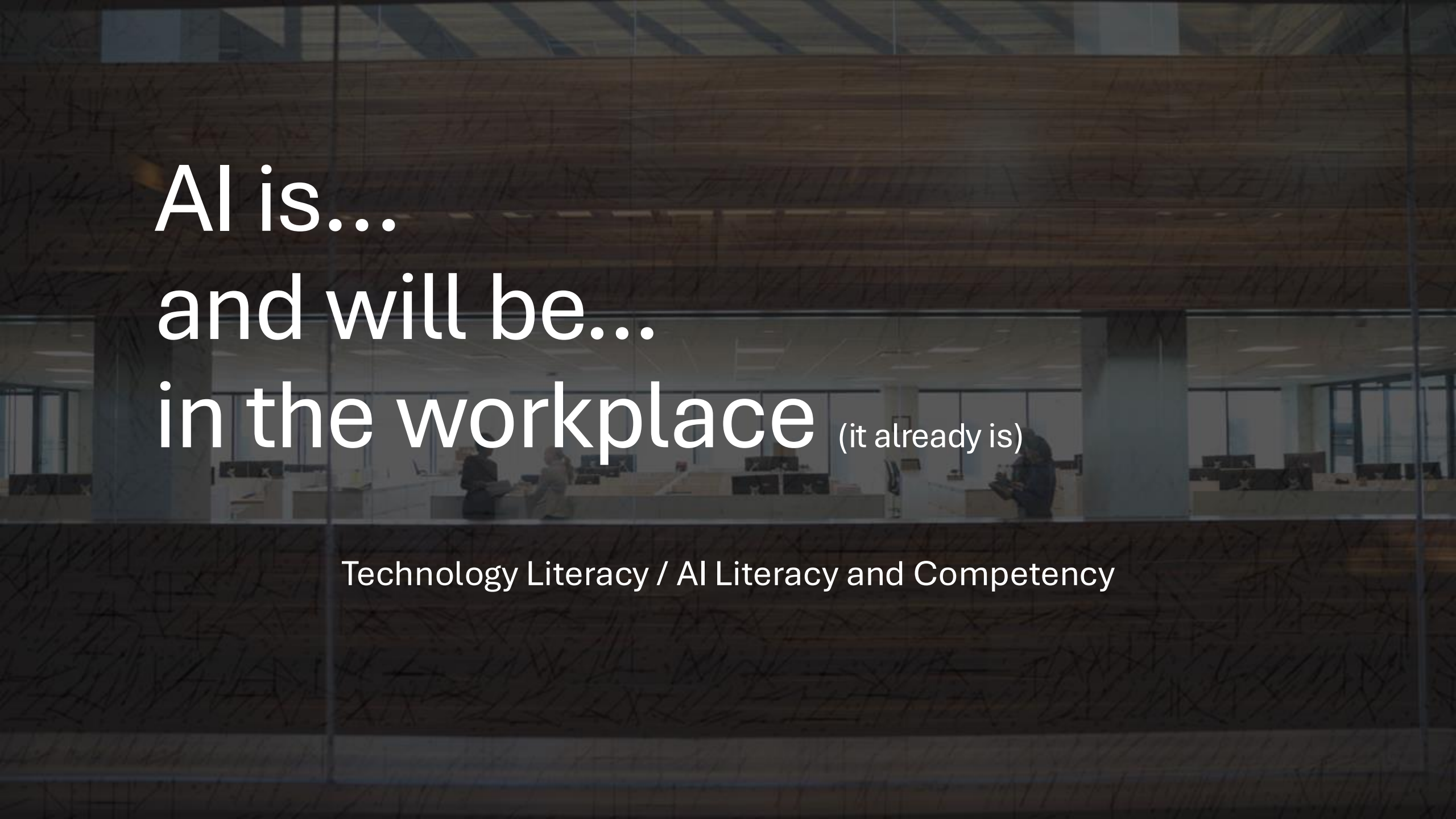
And how do we balance them?





Using AI in Teaching

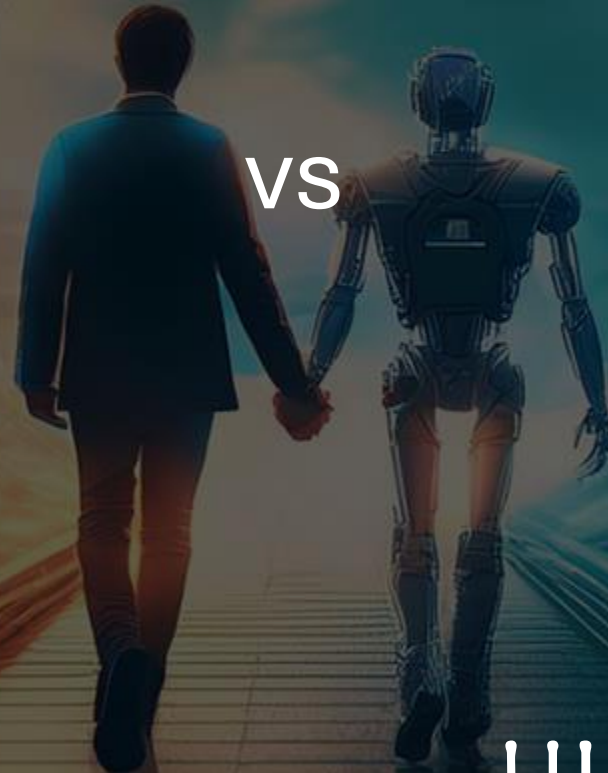
- Using image generators
 - Assist students visualize writing prompts
 - Generate images for presentations
- Co-writing / writing coach
- Writing critique
- Debate | Fact finding
- Podcasting
- AI video editing based on student screen-writing
- Virtual sets



AI is...
and will be...
in the workplace (it already is)

Technology Literacy / AI Literacy and Competency

HUMAN ON THE LOOP



VS

HUMAN IN THE LOOP

AI as a FRONTEND TO DATA

The screenshot displays a user interface for an AI chat application. On the left is a sidebar with a list of document sources: 'Uploaded Docs', 'NOAA' (with upload and settings icons), 'default', two 'New thread' entries (each with a close icon), '+ New Thread', 'CSV', 'OER- BioChem', '^T', and 'WWU on Ollama'. At the bottom of the sidebar are icons for search, help, and other functions. The main chat area shows a user query: 'what are the latituyde and logitude of this data?'. The AI response states: 'Based on the provided data sheets, I can help you with that!' followed by 'CONTEXT 1: This context provides information about the latitude and longitude of a mark.' and 'According to the data sheet, the coordinates for DN8535* (one of the stations mentioned) are:'. A bulleted list follows: '• Latitude: 18 05 37.87 (N)' and '• Longitude: 065 28 16.89 (W)'. The response continues: 'These values are listed under "GL0314*" in the context information. Let me know if you'd like to know the coordinates for any other station!'. Below the text are icons for copy, edit, refresh, and share, along with a 'Show Citations >' link. At the bottom is a text input field with the placeholder 'Send a message' and a green circular icon with a plus sign and a 'G'.

And data-driven, or predicted, analytics

HUMAN



AJ Barse M.Ed.

Instructional Designer

Western Washington University

AJ.Barse@wwu.edu

<http://wp.wwu.edu/ajbarse>

In any conflict between humanity and technology, humanity will win.

Albert Einstein

Wicked smart with cool hair